

SPECIAL SPRING CONSIGNMENT AUCTION

FARM MACHINERY, CONSTRUCTION
EQUIPMENT, TRUCKS AND TOOLS
SATURDAY, MARCH 28, 1981
10:00 A.M.

Location: Wilson's Auction Sales, Rt. 113, 1 mile South of Lincoln, Del.

I.H. 130 tractor w/1 row culti., 16" plow, 2-12" plows, 2 section J.D. drag, 5' disc harrow, Ford model #640 tractor, Dearborn 2-14" plows, 3 ph. disc harrow (good cond.), Ferguson 3 ph. sickle mower, I.H. - A tractor w/cult., 4 section J.D. drag harrow, 13' Case disc harrow, A.C. B tractor w/cult. & plows, funnel body grain wagon, 2000 gal. tank trailer, Troy Bilt rototiller, Wards Power-Trac 8 hp. garden tractor w/cult., 1970 Chev 4 wheel drive pickup, 275 gal. gas tank pump, mowers, baskets, seed planter, walking culti., wooden kegs, trussel benches, sweet pot. plow, grindstone, corn sheller, tractor wheels, tires, wheelbarrow, rakes, shovels, forks, saws, tools, lard pot, vises, fence posts, hog feeder, 2-12" gates, strawberry cups, lot of misc. tools, and many other items.

Terms: Cash, travelers check, or approved check w/current letter of credit from your bank.

This sale will consist of the property of the Estate of George Warrington, Milton, Del. and the Estate of Arthur Carey, Milton, Del.

This is only a partial listing as many items have been consigned too late to advertise. We will be open for consignment Monday, March 23rd thru Friday, March 27th from 8:00 a.m. to 5:00 p.m.

We have trucks available for pickup and delivery service.

Plan to consign today

"Consignment Open To Everyone"

For Further Information and Details contact:
Wilson's Auction Sales, Inc.
Dave Wilson
Auctioneer and Sales Manager
Glenn Watson, Jr.
Auctioneer
(302) 422-3454 or 856-2110

A tractor is not a toy

NEWARK, Del. — A tractor is no place to babysit, but that's just what many farmers use them for, says University of Delaware extension safety specialist Ron Jester.

Most rural youngsters and young farm visitors enjoy tagging along with grownups to observe or even participate in the daily job

of running a farm.

"One of the biggest thrills kids get is in riding a tractor or sitting atop a wagonload of grain or baled hay," admits Jester. But farm machines aren't carnival rides or toys. Tragic accidents can happen when they're treated as though they were.

It's hard to say "no"

to a child so eager to join you. But what starts as fun can—in one awful moment—turn into a lifelong handicap or even a funeral. Each year hundreds of children fall from farm tractors and other machinery, often into the path of drive wheels or trailing equipment.

Children riding in or playing around grain, feed or forage wagons can also get hurt. There's always a chance they'll fall into

the material being hauled and suffocate or become mangled by unloading mechanisms, the safety specialist warns.

"Even in a cab, a child isn't totally safe," says Jester. "There are cases where the cab door came open, allowing the child to fall out. A small child could fall out of an open window. Even if he or she stays put, your young passenger could get in the way, annoy or

distract you or move a control, and so cause an accident."

To avoid machinery accidents, Jester warns farmers to keep children away from farm equipment at all times. Make a rule that only those people needed for its operation or to do a particular job, ride on your farm equipment.

When training a new operator, make sure you choose the most secure place to ride—one with good hand holds and footing. Though tractors equipped with protective cabs do help keep you from being thrown off, it's still best to enforce a "no riders" rule.

To encourage safety on farm equipment, the Delaware Extension Service is offering "No Riders" decals to all interested farmers. Limited quantities are available by calling the county extension offices in Newark (302/738-2506), Dover (302/736-4675), or Georgetown (302/856-5250).



PUBLIC AUCTION

HARVESTORE-FICKES SILOS
LIVESTOCK FEEDING EQUIPMENT
SATURDAY, MARCH 28

11:00 A.M.

Located at Johnny Reb Farm (4B), off 164, Exit 16 (Expoland-Fishersville, VA.), approx. 1 mile South on Route 608.

Watch for Auction Signs:

20x60' Harvestore w/Hercules Unloader (new Cutting Chain), Fickes 26'x80' w/Patz Unloader, Aluminum-Steel root, Patz 40' Conveyor, Patz 60' Feeder, (2) Mayrath 30' Grain Auger, Clay 12' Conveyor, 1977 Chevy 4x4 Pickup (needs repair), approx 60' Tubular (mostly new) farm gates (various lengths), mineral (metal) feeders, 800 bu. grain bin, (early) hammer mill and grain drill, used oak lumber of (2x6's)-(2x8's)-(2x10's), pine 1x6x16 tencing boards, used pine 2x4's, used oak teed throughs, oak racks, other farm contents

Terms: Cash. Lunch: Available.

INFORMATION

804) 293-6161

RANDY KOHR

703) 337-1448

HENDERSON HEVENER

Ray Weaver, Auctioneer
703) 337-1156

Note. Silos and unloaders will sell at 1 P.M.

SOMETHING FOR EVERYONE HUNTINGDON COUNTY HOLSTEIN HEIFER SALE SATURDAY, APRIL 25

11:00 A.M.

Located at the Huntingdon Co. Fairgrounds off Rt. 22 at Huntingdon, PA.

80 HEAD SELLING

Bred heifers, open heifers and heifer calves. Daughters of many popular sires being offered. Watch future issues of Lancaster Farming For more information.

Terms - Cash or good check.

Sponsored by
HUNTINGDON CO. HOLSTEIN CLUB

For More Information and

Catalogs contact

John A. Foster, Jr.

RD1 Box 102

Petersburg, PA 16669

814-667-3614

Auctioneers

Mark Glick & Dale Gibboney

Ringman - Sherman Glick

Pedigrees John Galen Gilliland

Lunch available by

Manorhill Sunday School Class

GLOBE-RUN FARMS SPRING SALE

FRIDAY, MARCH 27 12:00 noon

Held at Belleville Sale Barn, Belleville, PA. Located between Huntingdon and Reedsville, on Rt. 655

55 - HOLSTEINS - 55

★ 46 Registered Cows

★ 8 I.D. Grades

★ 4 Bred Heifers

★ 12 In Milk As Two Year Olds

★ 4 In Milk As Two Year Olds

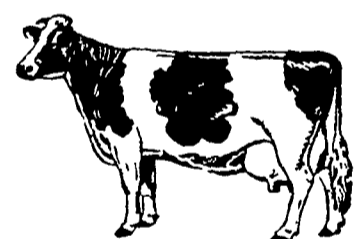
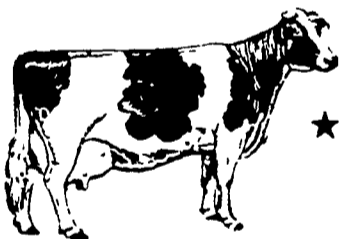
★ 1 HERD SIRE (23 months old) ★

Sired by WHIRLHILL KINGPIN - DAM is EX. over 27,000 milk.

Herd is certified and accredited-mostly all vaccinated. Arrangements will be made for interstate shipment. Examined for Pregancy.

FEBRUARY 81' ROLLING HERD

AVERAGE 16,700M 3.8% 640F.



(10 Over 20,000 milk)

—FEATURING—

(Many scored HIGH G.P. or V.G.)

GLOBE-RUN IVAN CHIEF NAG
(VG 86)

3-02 321d 22,218 3.2% 718F
Due May to "Colonel"

GLOBE-RUN CHIEF MARTY
HEATHER (VG)

4-03 365d 22,238 3.8% 839F
Due Sept to "Elevation Tony"
DAM 116,690 lb KINGPIN

GLOBE-RUN FAWN HONOR QUTTIE
(VG)

2-00 365d 18,355 3.7% 674F
Due Apr 6 to "Chief Buff"
DAM 112,297 lb ASTRONAUT

GLOBE-RUN
ASTRO BOOTS BABE (VG)

5-06 330d 20,128 3.9% 793F
Due June to "Chief Buff"
DAM 4 1% ASTRONAUT

GLOBE-RUN ARLINDA
CHIEF FAIRY

5-00 353d 21,390 3.7% 805F
Bred to "Astronaut"

A BOOTMAKER DTR. (GP81)

4 07 365d 24,769 3.1% 762F
Due Aug to "Elevation Tony"

GLOBE-RUN ELEVATION PEPPER
(GP)

2-05 358d 17,024 3.7% 637F
Due Aug to "East Star"
DAM has 123,589m 4565F (GP 84)

GLOBE-RUN ARLINDA CHIEF STAR
(GP)

5-07 365d 20,323 3.9% 796F
Bred Feb. 3 to "Elevation Pete"
DAM 20,000 4.0% ASTRONAUT

A KINGPIN DTR.

2-03 320d 13,351 4.0% 528F
Due at 3-09 on May 2

GLOBE-RUN ASTRO TILLY (GP81)

7-06 361d 19,805 4.2% 855F
Due Aug to "Elevation Pete"
MAT. SIS EX-91 over 100,000

GLOBE-RUN ARLINDA
CHIEF EASTER

8-00 317d 21,188 4.0% 836F
Due July to "Astronaut"
DAM by FORTY-NINER

GLOBE-RUN SILVER REED ORPHA
(82)

6-05 365d 25,108 3.8% 949 F
Due Aug to "Elevation Tony"
DAM EX with 129,271

GLOBE-RUN MARVIN TONY

3-07 365d 20,135 4.3% 861F
Due July to "Elevation Tony"
DAM by ARLINDA CHIEF

A BEN FACTOR CHIEF DTR. (VG)

5-02 365d 21,849 3.7% 815F
DUE JULY to "TAMLANE"
DAM GP ARLINDA ACE

GLOBE-RUN

MOONSHOT CRICKETT

2-04 326d 16,525 3.4% 561F
Bred to "GLENDELL"

In First Three Generations of animals selling Astronaut appears 37 times and Arlinda Chief 35 times

Owner: GLOBE-RUN FARM
John Foster, Sr. (814-667-3567)
John Foster, Jr. (814-667-3614)
R.D. #1 Box 102
Petersburg, PA 16669

CATALOGS WILL BE AVAILABLE

SEMEN SELLING - LUNCH AVAILABLE

Pedigrees:
JOHN GALEN GILLIAND

Auctioneer:
MARK GLICK