

FARM EQUIPMENT

FARM EQUIPMENT

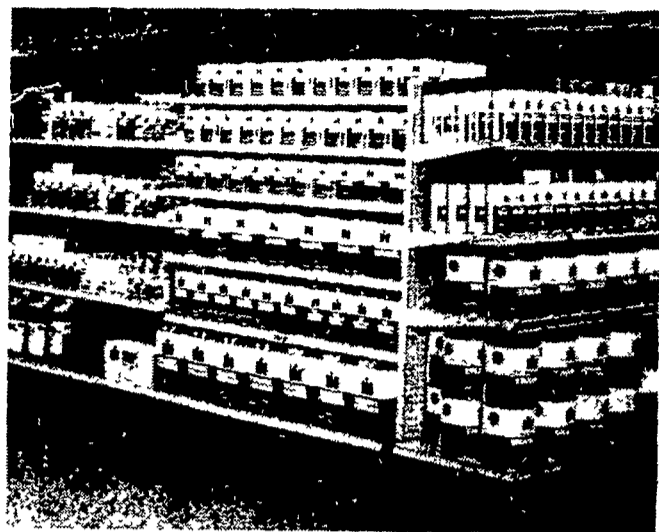
FARM EQUIPMENT

FARM EQUIPMENT

FARM EQUIPMENT

FARM EQUIPMENT

FARM EQUIPMENT



USED TRACTORS

IH F806D w/2 pt (Recond)
IH F-544D w/3 pt WF
IH F-350 w/2 pt
IH F-300 w/2 pt
IH F-300
(3) IH F-M (Any Price Range)

USED TILLAGE

IH 540 4F 16" Semi
IH 531 3F 14" MT.
IH 311 3F 14" 2 pt
MF 82 4F 14" 3 pt.
Case 10Ft. Trans. Disk.
JD 12 Ft. Spring Tooth Harrow
MF 10 Ft. Mt. Disk
IH 37 11" Disk
IH 540 4F 14"
IH 550 5F 16"
IH 401 8" Spring Tooth Harrow

MANURE SPREADERS

NI 175 bu, \$500

USED FORAGE EQUIP.

NH 818 2R Harv, \$325
NH 7 Forage Box w/Chassis
Dion Forage Box w/Chassis
Van Dale w/Roof & Chassis
Grove 16 Ft. w/Chassis
(INTEREST FREE TILL 8-1-81)

USED HAY EQUIP.

IH 46 Baler
IH 27 Baler w/thrower, \$1499
IH 37 Baler w/thrower
IH 47 Baler w/thrower
IH 420 Baler w/thrower
IH 430 Baler w/thrower
NH 461 9 Ft. Mower Cond
NH 469 9 Ft. Mower Cond
NH 479 9 Ft. Mower Cond.
NI 290 9 Ft. Mower Cond.
(3) IH 990 9 Ft. Mower Cond
IH 15 Hay Rake
IH 120 7 Ft Mower

USED HARVESTING EQUIP.

IH 234 w/Sheiler, \$1899
IH 1 Pr 1R Picker
MF 82 Combine (SP), \$1899
MF 92 Combine (SP), \$1599
IH 76 Combine (Pull)
Gehl Pickup Head
Fox Pickup Head

USED PLANTING EQUIP.

IH 56 4R w/insect. (exc)
IH 400 4R Planter
IH 260 2R 3 Pt Planter
JD 494A 4R DD (New Hoppers)
JD 494 4R Shoe
JD 17x7 Van Brunt Drill

Plow Int 710, 6 bottom,
18" cut \$4000 00
Call 215-348 9694
between 8 A M & 10 A M



SPECIAL MONTH OF MARCH
★ Parts Discounts
★ 15-30% Discount on New Equipment in Stock
Cash - No Trade

NEW MASSEY FERGUSON EQUIPMENT

540 combine	265 8 sp diesel tractor
154-4 diesel tractor	2745 MP diesel tractor
184-4 diesel tractor	row crop w/cab
245 8 sp diesel tractor	2805 diesel tractor,
255 8 sp diesel tractor	multipower, row
255 MP diesel multipower tractor	crop, cab
265 MP diesel multipower tractor	MF 640 Planter
	MF 33 Grain & Fer
	tilizer Drill

FACTORY ALLOWANCE UNTIL MAY 1
Waiver of Finance Charges on Eligible New 500-700 Series Self Propelled Combines

USED EQUIPMENT

MF 285 diesel tractor 8 sp	MF T030 tractor
MF 2805 diesel tractor, 350 hrs 1 yr warranty	IH 350 tractor
	JD A gas tractor
	MF 135 gas tractor
	David Brown 1200 diesel tractor

We Are Dealers For:

Massey Ferguson	Matthews
New Holland	J. S. Woodhouse
Hamilton	Husqvarna Saws,
Conde	Mitsubishi
Pequea Hay Tedders	George Tenny
Todd	Turnco Gravity Wagons
Vicon	Wisconsin
Woods	Haybuster
McConnell	

ABRACZINSKAS Farm Equipment, Inc.

RD 1, Catawissa, PA.
717-356-2323
(south on Rt. 42)

For Sale Brady 206 crop and soybean cooker, excellent condition, Hern London Co 201 782 6682

1968 Industrial model 680 Case loader tractor, good condition \$5900, 215 869 2116

TRACTORS Standard Shift 1086 Roll Cab Int 281 Hrs \$26,000 00, 1066 Int, 509 Hrs \$16,500 00

Call 215 348-9694 between 8 A M & 10 A M

For Sale Acorn stable cleaner in good condition, Badger auger feeder 84' long, wheel reeder for liquid protein, 2 Horn of Plenty magnetic dairy grain feeders 717-264-7948

For Sale - 656 Farmall hydro, diesel, \$6500, MF 65 diesel with multipower, \$2500, both tractors have recent overhaul, both in good condition, Berks Co Call after 4 p m 215 488 6156

See page D42 for full listing of Construction Equipment Consignment Auction to be held March 19 Consignments Welcome Sale Site at DENNIS M. MILLER EQUIPMENT Rt 22 Grantville, PA 717 838-1888 anytime 717-469-0937 daily

COMBINE CAB 4400 John Deere, 270 Hrs Heater & Air Cond with 13' aut grainhead \$30,250 00 Call 215-348 9694 between 8 A M & 10 A M

TRACTOR & ENGINE REPAIRS Complete Engine Rebuilding Used & Rebuilt AC and Wisconsin Power Units SPRING GARDEN REPAIR SHOP Joe S Stoltzfus RD RD #1 Kinzer, Pa 17535

JD 1240 corn planter, JD grain drill, FB-17, JD 5 bottom 16" semi mounted plow, 1968 JD 4020 tractor, 201-788 5444

For Sale - Agri Steel building, new, 40x90x14 high, AC 200 tractor with 1100 hrs with 5 16 semi mtd plows, AC 185 tractor, 500 hrs Columbia Co 717 356 7460

For Sale bale thrower wagons, steel or wooden sides with 6 or 8 ton gears, also Zimmerman elevator in 28, 32, 36 & 40' lengths, plywood feed bins Will deliver and in stall, Stoltzfus Woodwork, Rd 2, Gap, PA 17527, 1 mile north of Gap along 897, 717-442-8972

Wanted Gleaner 4 row N, 10 ft grain head, state condition and year Write to Dale Shuman, Sugarloaf, Pa 18249

8200 JD grain drill, 18 hole double disc, JD 630 tractor, 10' Brillion packer, all in excellent condition 717 898-2829 before 8 or after 5

DISK Int Hyd Folding, 196" \$7000 00

Call 215 348 9694 between 8 A M & 10 A M

AC 600 no till 4 R corn planter, dry fertilizer and insecticide boxes, \$2000, 717-359-4378

MACHINE SHOPS SALE Large milling machine and tooling radial drill press and drills, 4 spindle drill press, electric motors, new and used taps, dies and reamer, CR steel, channels, beams, chain hoist, welders, JD 2 row potato planter, many other items Commercial Engineering, 3454 Germantown Pike, Collegetown, PA 215-279-7048

Case belt blower with table and pipe, Case 133 baler PTO, Case 4 row rear 3 pt cultivator, 74 Arctic Cat 400 Panther, 400 Ski Whiz snowmobile, needs track, 10' cultipacker Dallastown, PA York Co 717-741-2315

Quincy air compressors, rebuilt air compressors, air motors and tanks, full line of accessories, Sales Service - Installations, Beiler Hydra-Matics Rd 3, New Holland, PA 17557 717 656 7273

ELEVATORS Grain, 45' new idea 6" auger power, take off driven \$1800 00 Call 215 348 9694 between 8 A M & 10 A M

JD 709 Mower 3 pt hitch, excellent JD 346 baler, exc. cond., field ready 301-363-0631 after 6 P.M

FOR SALE

John Deere 346 baler with thrower, like new 3 bale wagons 717-275-1738

WANTED

Used IRRIGATION PIPE & PUMPS Send your inventory and price to

ECCO, INC.

4021 N 6th St., Harrisburg 17110 717-238-9423

For Sale IH 1005 w/cab, 856, 806, 706, 656 gear & hydro, 606, 560, 504, 460, 400, 350, Super MTA, Super H, H Ferguson T020 Ford 961 John Deere 730 D Combines All Types of Other Farm Equipment

PHONE 814-652-2809 814-652-6540

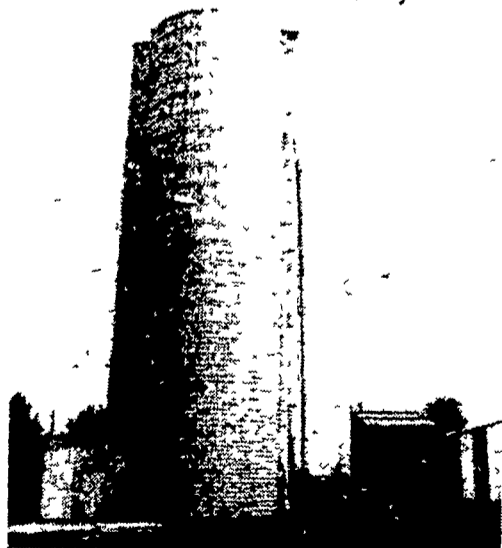
VAN DALE & STARLINE SILO UNLOADERS SALES & SERVICE

LANCASTER SILO CO., INC.

"LANCASTER" CONVEYORS TAPER BOARD FEEDERS BELT FEEDERS

2008 Horseshoe Road - 2436 Creek Hill Road LANCASTER, PA 17601

MANUFACTURER & BUILDER OF QUALITY WET-CAST CONCRETE STAVE FARM SILOS



LANCASTER SILO'S ARE BUILT WITH THE BEST ACCESSORIES AND SILO HARDWARE AVAILABLE TO OUR INDUSTRY. WE OFFER ONE OF THE "BEST". CALL US, WE SELL - WE TRADE 8-YEAR PAYMENT PROGRAM AVAILABLE

USED SILO SPECIAL 1 - 10x50 FICKES SILO 1 - 24x40 LANCASTER SILO

NEW EQUIPMENT:

SILO UNLOADERS
Van Dale "Magnum" 16' Thru 30'
Starline #70 12' thru 16'
Rebuilt Unloaders (All Sizes)

MIXING & WEIGHING UNITS
Supreme Batch Mixer Units 75 & 95 Cu Ft Units With Scales & 5 H P Motor
Van Dale #100 & 210 Mixer Units

FEED PROCESSING EQUIPMENT
Automatic Roller Mills #200 Mill w/3 H P Motor #400 Mill w/5 H P Motor Automatic Protein Meters Automatic Dump Scales

CATTLE & HOG WATERERS
Ritchie Cattle Waterers Ritchie Hog Waterers Starline Water Bowls Show Ease Bowls

DAIRY BARN EQUIPMENT
Cow Stalls & Stanchions Cow Trainers & Cow Mats Galvanized Barn Windows Ventilation Fans

ELECTRIC MOTORS
1/2 H P Thru 10 H P In Stock

KLEEN CHUTE KITS
Silo Chutes Stay Clean Always

ROUND HAY FEEDERS - 18 Hole
Ideal For Regular Or Large Bales

"LOOK" AT THIS! HOW MANY SILO COMPANYS OFFER A MORE COMPLETE LINE OF EQUIPMENT AND HARDWARE? "LANCASTER" HAS IT IN STOCK!

10% CASH SAVINGS ON ALL ITEMS IN OUR PARTS & DISPLAY ROOM w/\$75.00 OR MORE PURCHASE

SILAGE CARTS
FEED CARTS
KLEEN CHUTE KITS
GALVANIZED WINDOWS
FIBERGLAS CALF HUTCH
GATES-12'-14'-16'
HAY RACKS
COW MATS
"LANCASTER CUSTOM" BUILT CONVEYORS & TAPER BOARD FEEDERS
"LANCASTER" BELT BUNK FEEDER SYSTEM

USED & REBUILT SILO UNLOADERS
REBUILT STARLINE #70 12'-14'-16' UNLOADER
BADGER - 16' - 18' JAMESWAY - VOL II 20'

STARLINE PARTS
RITCHIE PARTS
BEARINGS
SPROCKETS
PULLEYS
BELTS
TOOL DISPLAY
BOOTS-RUBBERS
SHOVELS-BROOMS
FENCING & WIRE
BOLTS & NUTS
NEW & USED PIPE
PIPE FITTINGS
GREASE GUN
MOTOR OIL
CLIPPER BLADES
CHAIN & ROPE
COW NECK STRAPS
WBZ HORSE FEED SUPPLEMENT
WBZ SILAGE PRES
FROST FREE WATER HYDRANT

FOR COMPLETE INFORMATION, CALL:
Larry Hiestand - Office - 717 — 299-3721
Wayne Lloyd - Sales - 717 — 299-3722