

## Public Sales Register

Closing Date - Monday, 5 00 P M  
of each week's publication

SAT APRIL 18 6 30 P M  
Danville Livestock  
Market horse sale  
Located Old Route 11  
Danville PA Melvin M  
Lehman owner

SAT APRIL 18 5th An  
nual Benefit Auction of  
the New Danville Men  
nonite School Location  
Our Barn New Danville  
PA Sanford Lehman Auc  
tioneer and others

SAT APR 18 10 00 A M  
Public Sale of Real Estate  
Antiques Household  
Goods Tools and Coins  
Located Rd 1 Paradise  
Paradise Twp Lancaster  
Co PA along Rt 896  
about 4 miles south of  
Strasburg, or 2 miles  
north of Georgetown Sale  
by Mrs Robert J Graybill  
Howard Shaub and Roy C  
Probst Auctioneers

MON APRIL 20 2 P M  
Danville Livestock  
Market cattle and hog  
auction Located Old  
Route 11 Danville PA  
Melvin M Lehman  
owner

THURS & FRI APR 23  
24 Large 2 day Sale at  
Horst's Machinery Lot at  
Marion PA Ralph W  
Horst Manager

FRI APR 24 Spring  
Heifer Sale 250 300 head  
of Registered and grade  
Holstein heifers spr  
ingers bred and open  
held at the Belleville  
Livestock Market  
Belleville PA

FRI APR 24 6 30 P M

Yorkshire and Duroc bred  
gilts open gilts and boars  
Held at the Lebanon Fair  
Grounds For information  
Leon L Arnold  
717 273 5880

SAT APRIL 25 15th Col  
onial Charolais Spring  
Sale Location Win  
chester Auction Market  
Winchester VA Managed  
By Buzz Garey 100  
Walnut Lane Morrisville  
PA 19067

SAT APR 25 11 A M  
Consignment Horse Sale  
at the Keister's Mid  
dleburg Auction Sales  
Inc Rt 522 3 miles East  
of Middleburg 5 miles  
West of Selinsgrove Pa  
Don & Walt Keister  
Owners Ray Long & Dave  
Ines Auctioneers

SAT APRIL 25 4th An  
nual Public Consignment  
Sale of Farm Machinery  
large quantity of New  
Building Materials Tools  
Households etc by  
Newburg Hopewell Vol  
Fire Co Newburg Pa  
Cumb Co Art Rife Auc

SAT APR 25 10 A M  
6+ Acre farm and personal  
property Located at east  
end of Cambridge From  
Honey Brook follow Rt 10  
south approx 1 mile to  
Cambridge Rd turn west  
go approx 1 mile to pro  
perty Honey Brook Twp  
Chester Co Pa Terms by  
John B & Kathryn M  
Weaver Elton & Alvin  
Horning Auctioneers  
HORNING FARM AGEN  
CY INC

SAT APR 25 Wayne Co  
Calf Sale at Wayne Co  
Fairgrounds 1 mile north  
of Honesdale PA just off  
Rt 191 Donald Bryant  
Honesdale PA

SAT APRIL 25 Spring  
Sale of Lawn and Garden  
Equipment by  
Farmersville Equipment  
Inc RD4 Ephrata Pa  
John E and Paul E Mar  
tin Auctioneers

SAT APR 25 9 00 A M  
Public Sale of Valuable  
Real Estate Many Fine  
Antiques Modern Tools  
Household and Antiques  
Located 322 W Locust St  
in the Borough of East  
Berlin PA Cora A Gibbs  
Owner Clair R Slaybaugh  
Auctioneer

MON APR 27 7 P M  
Public Auction of Brick  
Ranch Style Dwelling  
Located along Rt 322 bet  
ween Ephrata & Clay  
Owners Harvey W & Anna  
Ruth Hahn John E &  
Paul E Martin Auc  
tioneers

MON APRIL 27 2  
P M Danville Livestock  
Market cattle and hog  
auction Located Old  
Route 11 Danville PA  
Melvin M Lehman  
owner

THURS APR 30 6 30  
P M Brummer Hancock  
Production Sale Bred  
gilts, open gilts boars  
feeder pigs and feeder  
lambs Port Royal  
Fairgrounds Bryan D  
Ines Auctioneer

### MAY

SAT MAY 2 Hubert  
Charolais Ranches SALE  
a dispersal of the Missouri  
division at the ranch  
Richards Missouri Sale  
managed by Buzz Garey  
100 Walnut Lane Mor  
risville, PA 19067

## GEORGE W. HAYES COMPLETE DISPERSAL

TUESDAY, MARCH 24 11:00 A.M.  
MILL HALL, PA

At the farm. From I-80 take exit 26, go north on Rte. 220 (Formerly Rte. 120) about 3/4 mile to 1st crossroads, turn right, go 2 miles to village of Rote. Go thru stop sign for 1/2 mile to 1st crossroad, turn left. Follow one mile to a "T", turn right and one mile to farm lane on left. From the north, take Rte. 220 south of Salona to last crossroads before I-80, turn left for 2 miles to village of Rote and follow the above directions. About 8 miles south of Lock Haven, Pa Watch for Holstein Auction Signs.

### 180 HOLSTEIN SELL

(100 Cows - 80 Heifers) (130 Registered - 50 ID Grades)

All tested for immediate interstate shipment - Nearly all Vacc. - Exam For Preg.

#### A HIGH TESTING, HIGH PRODUCING HERD!!

7 sell from 907 to 1033-lbs. fat.  
6 sell from 812 to 889-lbs. fat  
21 sell from 702 to 796-lbs. fat.  
26 sell from 602 to 696-lbs. fat.

#### Look At The Milk —

3 sell from 25 to 26,000 lbs. milk  
5 more sell over 23,000-lbs. milk  
8 more sell from 21 to 22,000-lbs. milk  
5 more sell over 20,000-lbs. milk  
8 more sell over 19,000-lbs. milk

#### TOP SIREs REPRESENTED IN THIS GOOD HERD!!

3 sell by Elevation, one "VG87"  
another "VG"  
14 by Jet Stream (9 Reg. - 5 ID Gr.)  
13 by Job  
10 by Superior (8 Reg. - 2 Gr.)  
Fury Ivan (2-7) Cavalier6  
5 by Charmcross - 4 by Eric  
3 by Barrett - 4 by Marvex  
3 by Molly Chief - 4 by Transmitter  
2 by Ivanhoe Star - 2 by Gay Ideal,  
Trump, Complete and others

#### HERE ARE SOME OF THE SERVICE SIREs!!

20 bred to Superior - 14 bred to Eric - 7 to Marvex - 3 to Barrett and others.

#### ROLLING HERD AVERAGE - 9419 Cows 15,965M 3.9% 628 Fat

We are impressed by the amount of milk and especially the high test for such a large herd. Watch Hol. World and Pa. News for pictures and more details.

#### MAKE YOUR PLANS NOW TO ATTEND AND BUY FROM THIS LARGE COMPLETE OFFERING!!

Sale must start 11:00 A.M. Lunch Available Catalogs Under Cover

R. AUSTIN BACKUS INC.  
Sale Mgrs. & Auctioneers  
Mexico, N.Y.

PENNA. HOL. ASSN.  
839 Benner Pike  
State College, Pa.

GEORGE HAYES, Owner  
R.D 1 Box 110  
Mill Hall, Pa. 17751  
717-726-4480

## IRVIN B. HORST COMPLETE DISPERSAL

THURSDAY, MARCH 26

11:00 A.M.

NEWMANSTOWN, PA

At the farm just off Rte. 419 between Schaeferstown and Womelsdorf, Pa. Turn west off Rte. 419 at the Millbach school onto Millbach Rd. and 1st farm on left. About 5 miles south of Rte. 422 and about 24 miles north of Lancaster, Pa. Watch for Holstein Signs. About 5 miles south of Myerstown, Pa.

### 70 REGISTERED HOLSTEINS

(40 Cows - 7 Bred Heifers - 16 Open Heifers  
8 H for Calves)

All tested for immediate interstate shipment.  
Exam for Preg.

1980 HERD DHIA AVERAGE —  
17,794 3.8% 674 Fat

### THESE HIGH PRODUCERS ALL SELL!!

1 with 1080-lbs. fat.  
2 with 954 and 931-lbs. fat.  
8 from 810 to 869-lbs. fat.  
10 from 709 to 791-lbs. fat.  
9 from 605 to 698-lbs. fat.  
5 from 499 to 597-lbs. fat.  
4 sell from 23,000 to 26,278 Milk  
7 more sell over 21,000 milk  
4 more sell over 20,000 milk  
7 more sell from 19,000 to 20,000 milk.

### DAUGHTERS OF THESE FAMOUS SIREs SELL!

5 by Elevation - 11 by "Creek" - 3 by Fury Ivan - 3 by Jet Stream - 3 by Gemini - 8 by Job - 2 by Astronaut - 2 by Marvex - 2 by Trump Jerry - Bronson - Altitude - Transmitter - Moonshot and others.

### GOOD SERVICE SIREs BEING USED!!

9 bred to Ace - 6 to Gemini - 3 to Creek - 3 to Trump - 2 to Legacy Fury Ivan and other top sires.

THIS IS A REAL QUALITY HERD -  
THEY CAN BE A REAL PROFITABLE ADDITION  
TO YOUR HERD!!

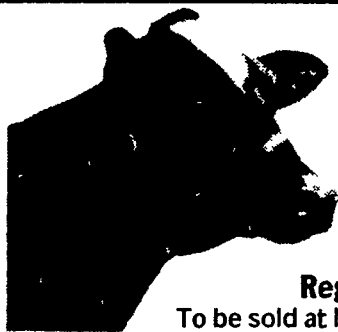
MAKE YOUR PLANS NOT TO ATTEND A BUY FROM THIS COMPLETE DISPERSAL!!

Sale Starts 11:00 A.M. Lunch Available Catalogs  
Under Cover

R. AUSTIN BACKUS INC.  
Sale Mgrs &  
Auctioneers  
Mexico, N.Y.

PENNA. HOL. ASSOC.  
839 Benner Pike  
State College, Pa

IRVIN B. HORST  
Owner,  
R D 1 Box 142  
Newmanstown, Pa 17073  
717-949-3253



## Special Night Sale

To be held at Smoketown Quality Dairy Sales Co.

FRIDAY, MARCH 20

7:30 P.M. Sharp

Registered And Grade Heifers Yearlings to Breeding Age.

To be sold at beginning of sale.

Load of Reg & Grade cows & heifers out of New England states and Canada Sires include  
Reg. Dean Wallace Security - Bred to Ruppchen Bootnick  
Reg. Ingholm Klondike  
Reg. 82 G P Simpsons Apostle - 3 yr 286d 16,110m 4 yr. 282d. 15,070m Dams records - 2 yrs. to 10 yrs. 13,940m to 20,740m  
Reg. 4 yr old - Woodbine Pearl Comet G P 83 at 2 yrs 1 yr. 11m 365d 17,635m Dam - V G 85 from 17,126m 4.2T. 723F. to 20,734m 4.3T 911F  
Reg. G.P. 81 - Skagvale Startrek  
Reg. Burke Lodge Prints Pattern  
Fifteen cows out of one herd Cows milking 60-70 lbs and have potentials to milk more Grade - Fresh 1st calf heifer - milking 61.2 lbs 3 8F for tester - sire Sleepy Hollow Kennedy Dam - 6 yr. 3m. 305d. 19,356m. Grade 1st calf heifer fresh - Dams last record 305d proj 21,240m. 668F Topped 105 lbs. per day  
Reg 4 yr old - Pen State Ivanhoe Star - bred to Creek 2 yr 4m 362d 14,462m 4.4T 641F 3 yr 6 m. 285d 17,050m 4 2T 708F Dam is 86 pts - Elevation - Records over 27,000m 1,000F and 30,000m - 1100F

### Also Selling - 8 Grade Yearling Heifers

Sire - Transmitter Son Dam - 5 yr 1m 305d 16,270m 3 7T. 602F. 6 yr 1 m estimated 305d 16,880m 605F  
Sire - Transmitter Son. Dam - 4 yr - made between 15,000 & 16,000m. 5 yr 2 m 278d 14,401m 3 6T. 525F 6 yr. 2m. 342d. 15,703m 3.6T. 558F.  
Sire - Willie Star Dam - 2 yr. 3 m. 268d 10,631m 3.7T. 393F 3 yr 2m 257d 13,360m 3 4T 456F 4 yr. 2 m Est. 305d 17,482m 671F  
Sire - Proud Dam - 2 yr. 6 m. 345d 12,581m. 4 8T. 605F.  
Sire - Betty Chief Son Dam - 5 yr. 8 m. 305d 15,283m 3 4T 517F  
Sire - Betty Chief Son Dam - 1st lactation 3 yr 2 m. Est 305d 12,646  
Sire - Betty Chief Son. Dam - 5 yr. 8 m. 305d. 18,073. 595F. Complete lac. 20,695m 690F. 6yr. 11m. Est. 305d. 18,254m 583F  
Records on Dam - of Betty Chief Son 88 pts. 8 yr. 10m 304d. 19,061m. 3 7T 704F. 9 yr. 11m 305d. 19,000m 10 yr. 11m. 305d 16,448m 3 7T. 607F  
Grades vacc Four Fancy heifers - Breeding age out of a herd dispersal.  
Reg. Born 8-25-80 vacc - Sire Mowry-K-Imperial Knight  
Reg Born 11-1-80 - Sire Penn Dell Apollo King Arthur. Dams records - up to 22,000m 800F  
Also selling - 5 Grade Heifers - 4-6 mo old. Vacc.  
Reg. Bull - Paclamar Astronaut Dam - Glenafton V.G. 85 records from 1 yr 11m. to 10 yr 1 m. 15,062 24,762, over 800F. 8 yrs 11m 343d. 30,288m. 1065F

Sale By,  
GORDON W. FRITZ  
717-393-0930

Carl Diller-Auctioneer  
Henry Kettering, Pedigrees

Lunch-Bird-In-Hand Auxiliary

Cash or good check night of sale.