

Berks Co. DHIA

(Continued from Page D7)

Clarence E Kreider	H	7 4	305	15,363	707
#32	H				
Barry L Burkholder	H	4 0	284	19,348	653
Judy	H	4-0	305	21 617	785
Leana	H	3 0	298	17 567	732
Anne	H				
R Bernell Burkholder	H	9 7	305	18,827	663
Mickie	H	7 4	305	17,118	688
Sugar	H	8 2	299	16,859	741
Patsy	H				
John C Bartsch	H	6 4	285	15 327	700
10Jangl	H				
Bendy Brook Farm	H	5 6	305	22,573	769
Lena	H	4 6	305	22 563	743
Promise	H				
Glen High	H	8 8	305	25 402	1061
Molly	H	3 1	245	17 082	654
Hessie	H	2 2	305	19,268	696
Inona	H	2 4	305	15 478	726
#48	H				
Floyd Kurtz	H	7 8	305	18 002	668
Ruth	H				
Philip & Tom Werley Jr	H	7 5	305	24 340	898
#17	H	3 4	305	19 234	747
#158	H				
Robert E Kopfer	H	0 0	305	21 561	788
#127	H	2 4	305	17 741	662
#9	H				
George Stein	H	6 5	305	19 666	672
Dora	H				
Adin Oberholtzer	H	6 0	305	21 304	721
Sparkie	H	3 4	305	20 704	767
Nellie	H	2-4	305	15 521	655
Cass	H				
Mirl Carl Farms	H	5 7	305	17 364	651
200 BJ	H				
Lester Burkholder	H	6-8	305	17 879	664
#26	H				
Heindel Farms Inc	A	4-0	286	17 808	767
Laurel	H	3-4	305	18,903	814
Dawn	H				
Harvy M Weaver	H	4 5	305	24 967	833
#22	H	4 5	305	19,566	665
#2	H	3 7	305	17,565	776
#31	H	3 8	305	17 426	699
#40	H				

Harvey C Krill Jr	H	5 2	285	18 495	720
Tammy	H	5 3	305	17 311	758
Drummer	H				
Donald Burkholder	H	5 9	305	18 456	709
#6	H	12 4	284	19 398	722
#28	H				
Joseph F Walters	H	5 1	305	14 108	687
#5	H				
Win Dale Farm	J	3 7	305	12 921	710
Milly					
Charles Zimmerman	H	7 4	305	19 110	744
Umpire	H				
William Mitchell	H	4 4	305	22 134	691
#3	H	8 5	305	17,693	650
#7	H	4 5	305	16,862	678
#20	H				
Arlan Krick	H	6 1	305	19 605	796
Kathy	H	10 4	305	18 695	698
Snowbal	H	5 1	305	18 217	770
Queenie	H				
Ken & Robin Wolfskill	H	2 0	305	17 372	781
#74	H	3 5	305	20 982	727
Apple	H				

Jaimore Farm	H	4 11	305	19,833	727
Star	H	4 4	305	17 979	695
Nora	H				
Glenn R Harnish	H	8 4	305	18 388	722
#39	H				
Y Creek Haven Farm	H	6 10	305	16,187	664
#47	H				
Good Bros	H	7 9	284	16 871	684
#64	H	8 8	271	16,153	679
#66	H				
John Bray	H	4 2	305	18 668	703
Faith	H				
Blue Mtn Academy	H	7 4	305	19,009	686
#286	H	6 4	305	23 557	773
#294	H	5 4	305	22 263	709
#396	H				
Poplardrive Holstein	H	3 10	305	18 849	689
Sidney	H				
Yost Brothers	H	9-5	305	24,147	703
Dahlia	H				
Teen Chal Farm	H	4 6	305	19 992	858
#73	H				
Irvin G Weaver	H	5 4	305	16 573	677
#5	H				

Chester Holstein tour on March 19

PARKESBURG — The Chester County Holstein Tour to Blair County will be held on Thursday, March 19

The tour will visit four farms in Blair County, include Singing Brooks Farm of Obie Snyder,

Mowry Farms of Kenneth Mowry, Marcove Farm of George Bridenbaugh and the farm of Dave Burket.

The bus will depart the Don Hostetter farm, Parkesburg, at 7:45 a.m.

Participants should bring a packed lunch for the noon meal. Tour cost is \$17.75 per person.

Reservations can be made by calling Harold Bare at (215) 593-6577.



SELF LOCKING FEED THRU FENCE



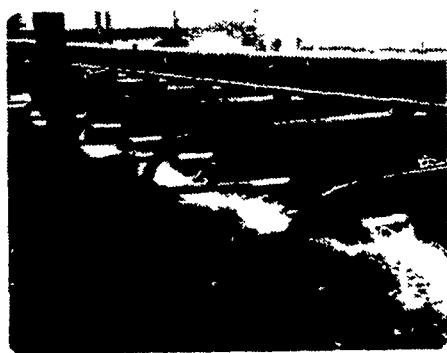
THREE SIZES:

SMALL - For Calves Up To 15 Months Old

ADJUSTABLE - For Heifers & Cows 8 Months And Older (Pictured)

LARGE - For Cows 15 Months And Older

- * All cows can be released at one time or individually
- * When handle is in lock position, cow automatically locks as it enters
- * No more chasing cows
- * Heavy duty construction
- * Stabilizer on bottom of yoke for extra strength
- * Custom built to your specifications
- * You can release all cows or hold cows that need treatment



CUSTOM BUILT BARN EQUIPMENT

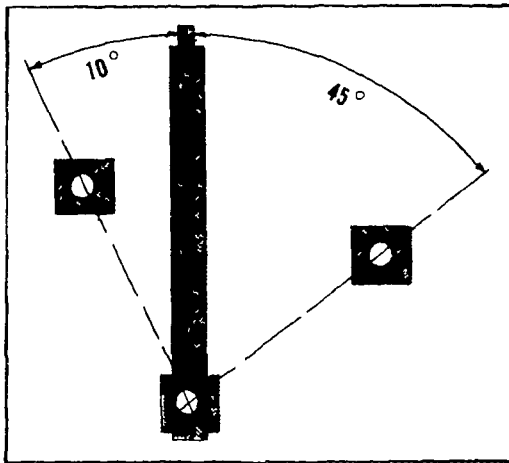
- * LOOP STALLS (Southern Style - Channel Front - Welded Front)
- * STANDARD FREE STALLS
- * GATES (38" - 48" - 54" High)
- * AUTOMATIC GATE LATCHES
- * FENCING
- * FEED THRU FENCING

PAUL B. ZIMMERMAN, INC.

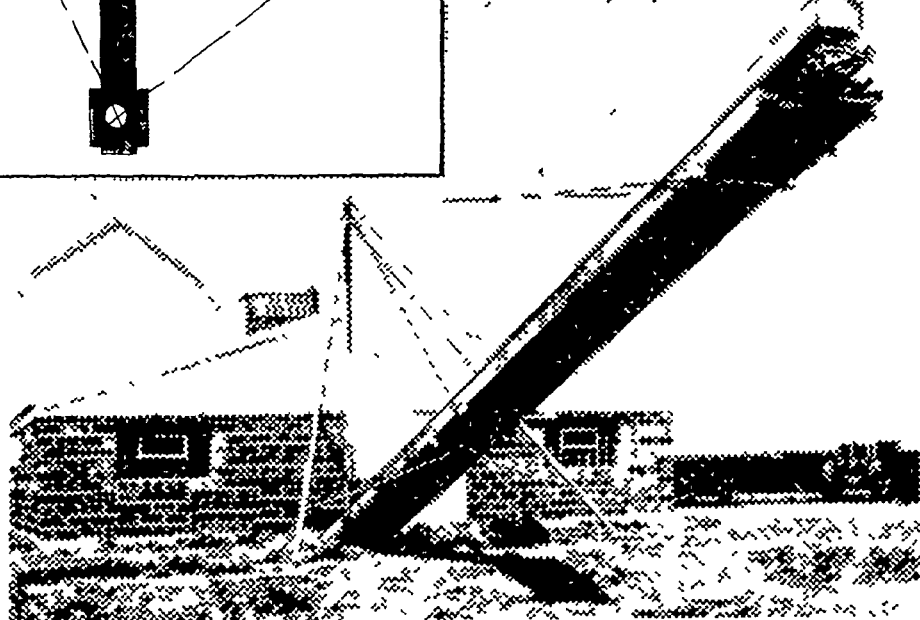
Hardware • Farm Supplies
Custom Manufacturing
Crane Service

Box 128 R D #4, Lititz, PA 17543
Wood Corner Rd
1 Mile West of Ephrata
Phone 717-738 1121

JAMESWAY®



swinging manure stacker



Easy storage

Jamesway 55° swinging stacker lets you store manure 36, 45 or 50 ft. from the barn (3 models). Stacks more than 600 tons for later spreading. Rugged, simple design. Ends daily manure hauling.

See us for systems and service that help make the good life better.

AGRI EQUIPMENT INC.

2754 Creek Hill Rd
Leola, PA 17540
717-656-4151

DEPENDABLE MOTORS

Honey Brook, PA
215-273-3131
215-273-3737

ROVENDALE SUPPLY

RD 2, Watsontown, PA 17777
717-538-5521

SOLLENBERGER SILOS

RFD 2, Chambersburg, PA
717-264-9588

HENRY S. LAPP

RD1, Cains, Gap, PA 17527
717-442-8134

HARRY L. TROOP

Rt 1 Cochranville, PA 19330
215-593-6731

J. A. SWOPE

Box 121, RD1
Myerstown, PA
717-933-4758

G. HIRAM BUCHMAN, INC.

Rte 519 - N off Rte 46
P O Box 185
Belvidere, NJ 07823
201-475 2185

ERB & HENRY EQUIP., INC.

22-26 Henry Avenue
New Berlinville, PA
215-367-2169

DETWILER SILO REPAIR

Rt 2, Newville, PA
717-776-7533

GEORGE A. COLEMAN

Rt #2, Box 216
Elmer, NJ
609 358-8528

BENNETT MACHINE CO.

1601 S Dupont Blvd
Milford, DE
302-422-4837