

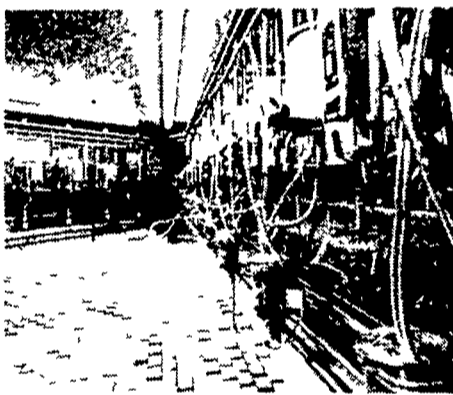
Bradford meets reps



Bradford County Extension members who met with state legislators at a banquet in Harrisburg as part of the fourth annual State Capital Day included, from left, Jeff Hale, Wysox; Roger Madigan, State Representative 110th District; Frank O'Connell, Senator 20th Senatorial District; and Gary Green, President of the Bradford County Executive Committee

learn by doing in 4-H

From Bou-Matic Technology . . .
BOU-MATIC IS THE ONLY COMPANY THAT HAS DONE EXTENSIVE RESEARCH TO GIVE YOU THE MOST FOR YOUR MONEY IN BETTER MILKING.



THINKING OF A PARLOR, PIPELINE OR UPDATING YOUR PRESENT SYSTEM? BOU-MATIC HAS THE TECHNOLOGY YOU'RE LOOKING FOR

With our trained service technicians and the latest in testing equipment - **WE CAN SERVE YOU BETTER**

THE AUTOMATED MILKING SYSTEMS

LET US SHOW YOU WHAT BETTER MILKING MEANS...

- ★ Better Milking means healthier udders
- ★ Better Milking means a better let down
- ★ Better Milking means a better milkout
- ★ Better Milking means higher butterfat test
- ★ Better Milking means a Vented stretch Bore Liner
- ★ Better Milking means alternating pulsation for better massaging
- ★ Better Milking means a Lower Vacuum
- ★ Better Milking means more gentle milking at teat end

Better milking means more Profit which is yours.

This is what Bou-Matic will do for you. Give us a call or drop us a line. We will be glad to have our Salesman give you a demonstration on better milking.

After 6 P.M. • Call:

Ray Shenk - 717-626-1152 Vic Leininger - 717-653-1378
 Mervin Nissley - 717-872-4565 Gary Walton - 215-593-6966



- ★ Bucket Milker Units
- ★ Parlor Conversions
- ★ Parlors
 - Polygon
 - Herringbone
 - Trigon
- ★ Detachers
- ★ Vacuum Pumps
- ★ Around The Barn Pipeline



- ★ Therma•Stors
- ★ Bulk Milk Tanks
- ★ Compressors
- ★ In Line Tube Cooler

WE HAVE USED TANKS GIVE US A CALL.

★ 24 HOUR REFRIGERATION SERVICE - WORK GUARANTEED ★

- PLANNING LAYOUTS • SALES
- INSTALLATION • SERVICE

SHENK'S FARM SERVICE

501 E. WOODS DRIVE, LITITZ, PA 17543
 PHONE: 717-626-1151

Our Service Trucks Are Radio Dispatched • Bulk Tanks • Therma•Stor

Farm labor force slumps 18%

HARRISBURG — Pennsylvania's farm labor force was estimated at 87,000 workers during the week of January 11 to 17. This is 18 percent below last January's 106,000 farm workers, according to the Pennsylvania Crop Reporting Service

Farm operators and unpaid family members throughout the commonwealth numbered 69,000, while hired workers totaled 18,000 during January. This represents a 22 percent decrease in hired workers from last January and a 13 percent decrease in the family sector

The average work week for

Pennsylvania farm operators during the survey period was 44.6 hours. Other unpaid family workers averaged 40.6 hours and hired workers averaged 39.8 hours. National averages are 31.3 hours for farm operators and other family members, and 35.8 hours for hired workers

Family workers include family members who work 15 hours or more without receiving cash wages. Hired workers include all persons working one hour or more for cash wages during the survey week.

Farm wage rates, for all methods of pay, converted to an

hourly rate, averaged \$3.73 in Pennsylvania, up from \$3.45 at the same time last year. The national average, \$4.12, was up 43 cents from 1980. Commonwealth field workers averaged \$3.64, compared with \$3.62 last year at this time. Livestock workers took home an average of \$3.14 per hour, compared with \$2.80 last year.

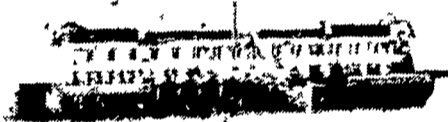
Nationally, the total number of workers on farms January 11-17 was 2,989,500, a decline of 32,000 from last January. Family workers and operators totaled 2,068,900, a decline of 43,000. The number of hired workers rose 11,000 to 920,600 from last January.

New From TYE END WHEEL (Pull Type) PASTURE PLEASERS & STUBBLE DRILLS



End Wheel 80 Pasture Pleaser Model 104 3404

The Tye end-wheel Pasture Pleaser frame is built heavy to support the addition of weights, often needed in no till planting. Furnished with hydraulics up to the hitch. Not only can the unit overseed and interseed pastures, it can also be used for planting soybeans, wheat, rye, and other seeds in no till or conventional seed beds.



End Wheel Stubble Drill Model 104 3427

GRUMELLI'S FARM SERVICE

Quarryville, PA 17566
 Phone: 717-786-7318

IS SHE OR ISN'T SHE?



NOW YOU WILL KNOW FOR SURE! REVOLUTIONARY NEW MILK TEST FOR PREGNANCY

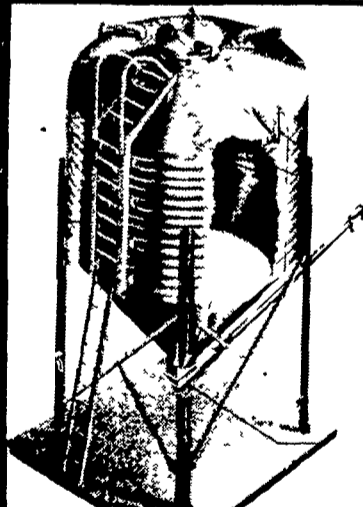
- 1 Earlier testing for pregnancy will save valuable time and money
- 2 Gives you and your vet early warning of breeding problems
- 3 Test is 99% accurate for non-pregnancy
- 4 Every cow that is open over 90 days costs you at least \$10.00 per cow per day
- 5 A milk sample taken 22-26 days after breeding is all you need
- 6 NO stress on the cow
- 7 Complete instructions with each kit
- 8 1 kit tests 10 cows

For More Information, Write:

Xtra Factors, Inc.

99 Locust Bend Rd., Ephrata, Pa. 17522
 717-859-1166
 Dealer Inquiries Invited

YOUR HEADQUARTERS FOR GRAIN AND AUGER DELIVERY SYSTEMS.



READ FEED BINS

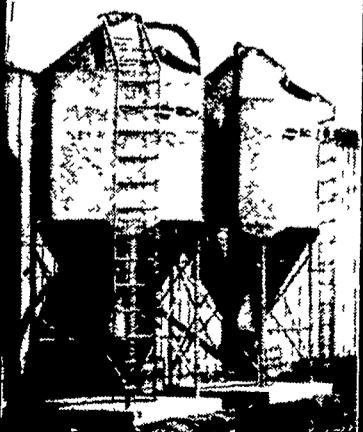


GSI BINS

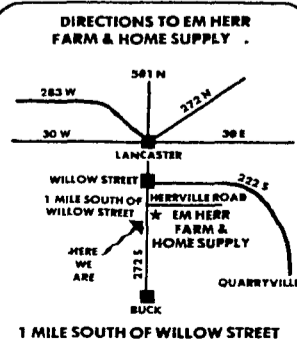
FEATURING:

- All galvanized steel with G-90 galvanized coating, including galvanized doors
- Our steel is A446 Quality or a minimum yield of 40,000 pounds per square inch

- Walk around steps on top of roof
- Equipped with safety rings
- No welding anywhere on roof, prevents rust
- Slotted holes to raise & lower roof for air movement for drying



SCHULD BULK STORAGE BINS



EM HERR EQUIPMENT, INC.

FARM & HOME SUPPLY

Rt. 1 Box 272 Quarryville, Pa. Willow Street, Pa.

Phone: (717) 464-3321

SERVING THE INDUSTRY OVER 20 YEARS