

Winners named in draft horse show

HARRISBURG — Competition was conducted in little more than half of the classes at the Draft Horse and Mule Show held Friday, March 6, at the Farm Equipment Expo.

Entries were shown in the Belgian stallion, Belgian Colt, Belgian Filly, Percheron stallion, grade mare and mule classes

There were no entries in the Belgian mare, Percheron colt, Percheron mare, Percheron filly, and gelding classes

Judge in the show was Vernon Claypool, of Indiana, Pa

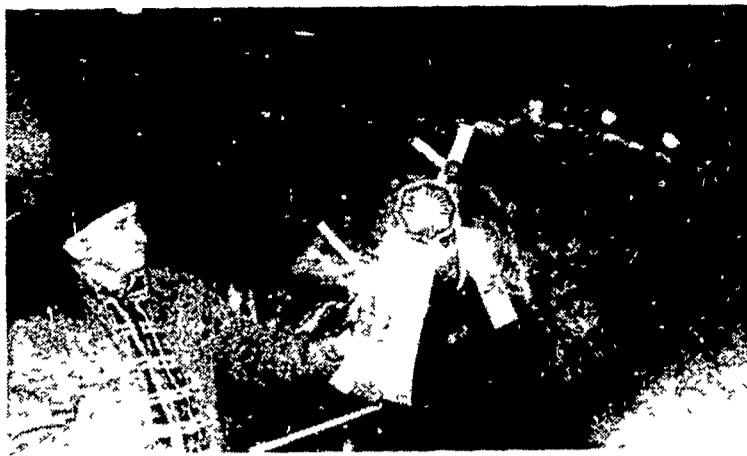
Top placings include:
Belgian stallion — First and second placings were taken by Robert W. Decker, of Garrett, Pa.

In the Belgian colt class, Charles B Lindsay, of Greencastle, was first; D Lewis Mothersbaugh, R1, Centre Hall, second; and William C. Howard, R1, Acme, third. The Lindsay entry was named champion.

Top three finishers in the Belgian filly class were Larry B Orndorff, of McKnightstown, D Lewis Mothersbaugh and Robert W. Decker.

In the grade mare class Monroe Miller, R3 Punxsutawney, took first and second; and third was Atlee Troyer, R2 Mifflintown.

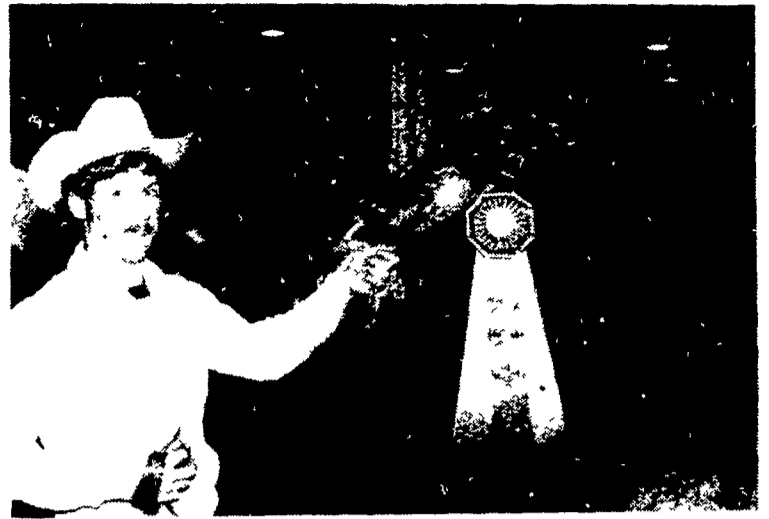
The top two placers in the Percheron stallion class were



Top placing in the Belgian colt class of Draft Horse Show is exhibited by Charles Lindsay, of Greencastle.

James M. Cole, R1 Spring Mills; and James R. Oldhan, R1 New Paris.

In the mule class, entries of Bob Welk, R4 Quarryville placed first and second.



In the Belgian filly competition, the top placing is an entry of Larry Orndorff, of McKnightstown.

Jersey group revises sale requirements

LANCASTER — The requirements for the national Jersey promotional sales — the All American, the National Heifer and the Pot O' Gold Sales — were revised by The American Jersey Cattle Club Board of Directors during a recent meeting in Columbus, Ohio.

The All American Sale is held each year in conjunction with the

North American International Livestock Exposition, Louisville, Ky. Requirements for this sale state that milking females must be plus over their herdmates for milk or fat, or that the dams of unfreshened animals be plus over their herdmates.

The minimum nomination requirement for the National Heifer Sale, beginning with the

1982 sale in Wichita, Kans., will be a Pedigree Index (PI) of at least +500 milk. The PI is computed by adding one-half of the sire's Predicted Difference for Milk (PDM) to one-fourth of the maternal grandsire's PDM

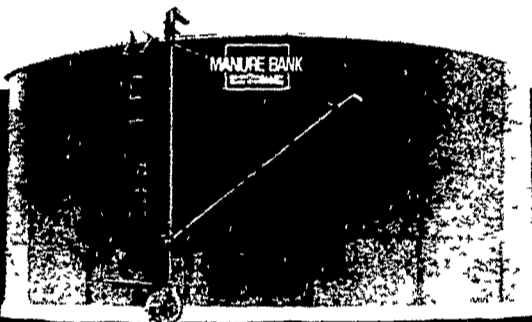
Nominations for the Pot O' Gold Sales, held at the time of All American Show and at the time of Western National Show, must have a PI of +700 M. Nominations for

this sale must be received in the AJCC office by July 1 for the 1981 sale

No animal will be catalogued for any of the above sales if it has a declared abnormality carrier in its three generation pedigree.

Complete information may be obtained by contacting Jersey Marketing Service, P.O. Box 27310, Columbus, Ohio 43227, Phone 614/861-3636

CHROMALLOY MANURE BANK® above-ground manure system

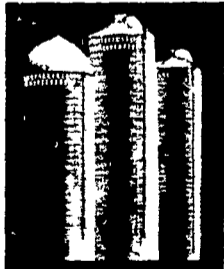


Saves time, money and your environment...

...and it's the first glass-fused-to-steel structure good enough to come from Madison® Silos.

Chromalloy Manure Bank is your key to profitable manure management. It slashes fertilizer costs by saving valuable crop nutrients in the manure for your fields. cuts tractor-time and man-hours by storing the manure until you and your fields are ready for spreading and conserves your environment by minimizing water and air pollution.

Famous Madison Silos quality throughout. Chromalloy Manure Bank is built to your specific needs by dedicated crews from Madison Silos America's leader in top-quality feed processing and storage structures since 1914. You owe it to yourself to get all the facts about the Chromalloy Manure Bank.



Madison "System of Choice." Logical structures for every storage need. Madison Silos for corn silage. Madison Nutri-Matic® and Grain-O-Matic® for haylage and high-moisture grain. And, Chromalloy Manure Bank for liquid manure.



CHROMALLOY FARM SYSTEMS, INC. Making things better for you.

FREE—MADISON FACT FINDING TOURS

See for yourself how local farmers are producing more milk and meat with Madison structures. FREE one-day tours from January through March, 1981. Send coupon today for free tour guide and Madison structures catalog.

Yes, send me the Madison 1981 Tour Guide and catalog

Name _____
Address _____
Town _____ State _____ ZIP _____

Mail to: Chromalloy Farm Systems, Inc.
P.O. Box 8068, Dept. 3812, Madison, WI 53708
© 1981 Chromalloy American Corp

STOLTZFUS MEAT MARKET RETAIL MEAT MARKET

- FRESH CUT BEEF & PORK
- FRESH EGGS RIGHT FROM THE FARM
- ★ OUR OWN COUNTRY CURED HAMS, BACON AND SWEET BOLOGNA



Orders Taken For Beef Sides; Wrapped And Ready For Your Freezer

Attention Farmers:
We Do Custom Beef Slaughtering

PH: 717-768-7166

Directions: 1 block east of Intercourse on Rt. 772
Reg. Hours: Thurs 9-5, Fri. 9-8; Sat. 8-5



One word of advice on how to buy a chain saw.

Husqvarna. That's the Swedish word that has come to mean the "finest" whenever the subject of chain saws comes up.

Yet the uncompromising precision and exceptional longevity may make a Husqvarna the least costly in the long run.

We'll help you select the correct model. And we'll stand behind it with factory trained service.

Come in—and let us give you the word on chain saws. Husqvarna.  The Chain Saw Professionals.

AVAILABLE NOW AT
FARMERSVILLE EQUIPMENT INC.

RD 4, Ephrata, PA Ph. 717-354-4271

THE FUEL WAR...

Are You Winning? Or Losing.

The Conestoga

By Hydro Temp

NEW MODEL, NEW LOOK.

A complete central HOT WATER system for your home



Coal & woodburning, cast iron, rocker grates, scenic 2 door with wood handles. **\$1145**

HOT AIR WOOD BURNING INSERT
Installs in a snap - **\$595**

HOT AIR COAL & WOOD INSERT - **\$720**

J & A STOVES

Before You Buy, Give Us A Try
3752 East Newport Road, Gordonville, PA 17529
Along Rt. 772 - 1/2 mile east of Intercourse
PH 717-768-8913

ATTENTION FARMERS...
FREE ESTIMATES ON RODENT CONTROL



RODENTS carry diseases which can endanger the health of your dairy herds. Your business is raising them. Ours is protecting them.



Since 1928
Pest control is too important to trust to anyone else

447 East Third St.
Williamsport, Pa.
17701
717-323-1337
717-748-3807