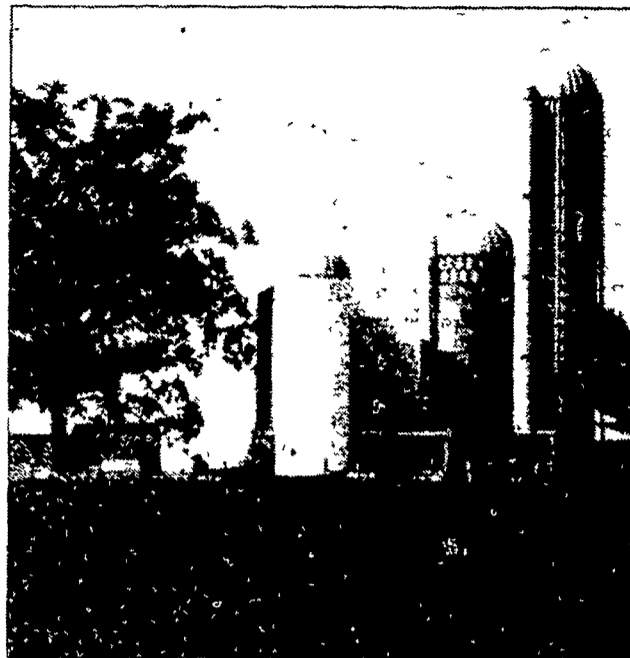


# WE'RE NUMBER ONE!



## Per Bale or Per Silo Preserve Hay and Haylage Nutrients with BEACON PRE-SERV\* Products!

If you use hay by the bale, Beacon Hay Pre-Serv lets you bale it at 25% moisture. This allows you to bale earlier in the day, later at night, and well before rain can damage it while drying. Baling at higher moisture levels means you get tougher hay with less leaf shatter . . . hay that cows definitely prefer, with as much as 20% more nutritional value!

If you ensile hay into hay crop silage, Beacon Silage Pre-Serv controls the fermentation process by speeding it up. Therefore, a stable silage condition is reached much sooner. Less heat is produced during the fermentation process. The reduced temperatures can lessen the chance of protein being heat-damaged.

That means more nutrients in the haylage where they can be used to make more milk. And that means less feed to buy.

Hay Pre-Serv. Silage Pre-Serv. Both are blends of food-grade mold inhibitors, antioxidants, and flavors. They improve palatability and digestibility while they reduce spoilage. And both are easy and inexpensive to apply. Find out more about these great products now. Per bale or per silo, you'll get more milk production, and that means more profits!

\* A trademark of Kemira Industries, Inc.

**EARLY ORDER NOW FOR BIG SAVINGS PLUS  
FREE WINTER JACKET WITH EACH  
500 lbs. OF BEACON PRE-SERV\* PRODUCTS DELIVERED.  
OFFER ENDS MARCH 28, 1981**

### CALL YOUR BEACON DEALER TODAY!

<b>H. JACOB HOOPER</b> Intercourse, PA 717-768-3431	<b>W.L. MUNKERT CO.</b> Hanover, PA 717-637-6923	<b>LEON HESS</b> New Holland, PA 717-354-7935	<b>VAN-MAR FEEDS</b> Shoemakersville, PA 215-926-1430	<b>GEORGE UNDERWOOD</b> Northeast, MD 301-398-1541	<b>CLARK SUPPLY CO.</b> Rising Sun, MD 301-658-6464
<b>NEW FREEDOM FARM &amp; HOME SUPPLY, INC.</b> New Freedom, PA 717-235-3606	<b>MCCRACKEN'S FEED MILL, INC.</b> Manheim, PA 717-665-2186	<b>R &amp; W FEEDS &amp; HARDWARE</b> Centerport, PA 19516 215-926-3818	<b>DAVID O. FINK</b> Slatington, PA 215-767-1408	<b>ELROY SANER</b> Thompsontown, PA 717-535-5583	<b>MOGEL BROS. FEED</b> Hamburg, PA 215-562-5398
<b>MARTIN'S ELEVATOR, INC.</b> Hagerstown, MD 301-733-2553	<b>MURPHY &amp; CLOUSE FEED MILL</b> Carlisle, PA 717-249-2963	<b>JOHN M. HERR &amp; SONS, INC.</b> Grantville, PA 717-469-0988	<b>JOHN M. HERR</b> 717-865-2401		
<b>H.O. ANDREWS &amp; SONS, INC.</b> McVeystown, PA 717-637-6923	<b>NOLT'S MILL</b> Witmar, PA 717-393-1369	<b>G.S. SNYDER FEED</b> Brodbeck, PA 717-235-1213	<b>STEVENS FEED MILL, INC.</b> Stevens, PA 215-267-2150		

**RICHARD B. KENDIG**  
Special Accounts  
Representative  
Phone 302-478-3058

**CHESTER WIEST**  
Sales & Distribution  
Manager  
Phone 717-741-2600

**R.E. RUDISILL**  
Sales & Distribution  
Manager  
Phone 717-854-2281

**GREGORY DIEHL**  
Beacon Advisor  
Phone 717-244-1824

**ISAAC K. LEFEVER**  
Beacon Advisor  
Phone 215-267-7042

**BEACON FEEDS**

York, PA  
Ph: 717-843-9033

**HAY PRE-SERV YOUR PROFIT PRESERVER.**

**Beacon Milling Company, Inc.**

**We're Employee Owned. That's Why We Shine.**