

# OPEN HOUSE

come in and join the fun!

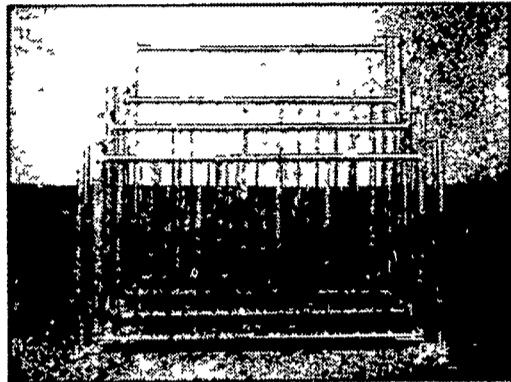
**DOOR PRIZES**

**THURSDAY, FRIDAY & SATURDAY, MARCH 19-20-21**  
 THURS. - 8 A.M. to 5 P.M., FRI. - 8 A.M. to 9 P.M., SAT. - 8 A.M. to 12 Noon

**DOOR PRIZES**

**Rohn** 

**SPECIAL PRICES ON ROHN EQUIPMENT DURING OPEN HOUSE**



Vertical Side Crate

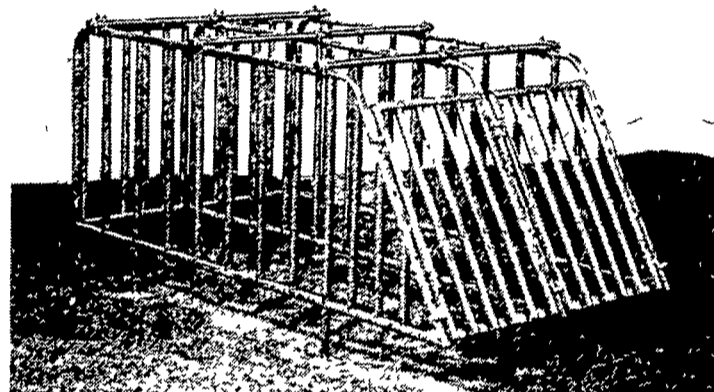


Stacked Pens

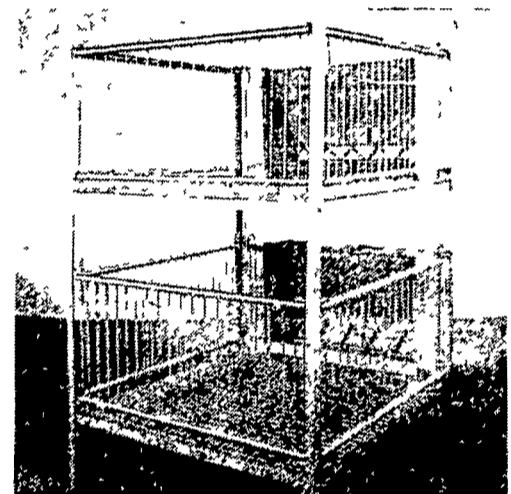
**FENCING**

**FARROWING**

**True Hot Dip Galvanized after fabrication**



Sloped Front Stall



**GESTATION**

**NURSERY PENS**

**WOVEN WIRE**

4'x8' SHEETS

**\$80 PER SHEET** Limited Supply

**MONOFLO NIPPLE WATERER**



Precision made from stainless steel, will not rust or corrode. Factory tested . . . indefinite life. "Bite-Action" eliminates water waste. Pigs accept drinkers quickly. One nipple drinker services 12 pigs to market size. Ready to install.

For water pressure from 15 to 50 p.s.i.  
 WT ea 3 1/2 ozs.

SPECIAL PRICES FOR OPEN HOUSE

1/2" **\$3.75** ea      3/8" **\$2.90** ea

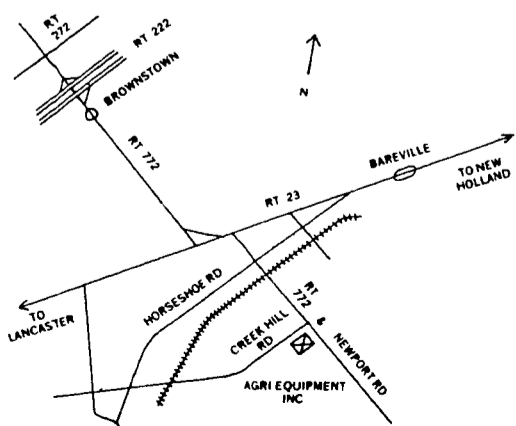
**Medicator**  
 MEDICANT PROPORTIONER



For the introduction of medicants into the drinking water of poultry, swine and other farm animals.

Now **Medicator** shows you just how much water your pigs and chicks are consuming per minute...a simple valve adjustment on the medicant flow meter will proportion the proper amount of MEDICANT...

	<b>4 GALLON</b>	<b>2 GALLON</b>
Open House Price	<b>\$199<sup>50</sup></b>	Open House Price <b>\$142<sup>50</sup></b>



AGRI-EQUIPMENT, INC. OFFERS COMPLETE SALES • INSTALLATION • SERVICE

**AGRI-EQUIPMENT, INC.**

**CATTLE - HOG - POULTRY EQUIPMENT SERVING PA, NJ, NY**

2754 CREEK HILL ROAD  
 LEOLA, PA 17540  
 PHONE 717-656-4151