

**For Sale**  
 IH 1006 w/cab, 856,  
 806, 706, 656 gear  
 & hydro, 606,  
 560, 504, 460, 400,  
 350, Super MTA,  
 Super H, H  
 Ferguson T020  
 Ford 961  
 John Deere 730 D  
 Combines  
 All Types of  
 Other Farm  
 Equipment  
**PHONE**  
 814-652-2809  
 814-652-6540

**USED EQUIPMENT**

**TRACTORS**

- Case 930 Tractor CK
- Case 430
- Case 350 Crawler Dozer (New)
- David Brown 990 w Loader
- 990 David Brown Tractor
- JD 3020 w Loader
- White 2 105 Tractor
- Oliver Super 77

**LOADERS**

- Case 1537 Skid Loader
- Case 1816 Uni Loader
- Case 450 Crawler Loader
- Case 450 Crawler Dozer

**TILLAGE**

- Case Disc Harrow 9
- Case Disc Harrow 10
- Case 400 18 20 Auto Reset 4 Bot Plow
- Oliver 2 Bot Trailer Plows
- Oliver 3 Bot Trailer Plow

**USED Cultipacker HARVESTING EQUIPMENT**

- Gehl 600 Harvester 2 Row Cornhead and Pickup Head
- NI Unisystem 701 Tractor
- NI Unisystem 705 Tractor
- NI Unisystem 702 Tractor 710 Combine & 760 Harvester
- NI 727 Husking Bed
- NI 323 1 Row Corn picker
- NI 310 1 Row Corn picker
- Int Mid Picker 2 Row
- Mt No 61 1 Row Picker
- JD No 25 Harvester
- Case 300 Harvester
- Case V 12 Shredder
- NI 2 Row Narrow Pull Picker
- Hesston 2000 100 Harvester
- NI Forage Blower
- Mt Chopper
- MC Chopper

**HAY EQUIPMENT**

- Hesston 1014 12 Windrower
- Hesston P1 10 Dump Rake
- Side Delivery Rake with Steel Wheels
- New Idea Trailer Mower
- Mott Mower
- 3 pt Hookup Mower
- Bale Thrower Wagon

**MISCELLANEOUS**

- Ford 4 Row Corn Planter
- JD 2 Row Planter
- JD 494 Corn Planter 4 row
- 10 Used Spreaders
- 3000 Gal Husky Tank Spreader
- NI 224 10 ton Spreader
- Potato Grader
- Set of 16 9x34 Duals

**NEW IDEA**

**SPECIAL!**  
 • Good Prices on New NI Spreaders



**ZIMMERMAN'S FARM SERVICE**

Bethel, PA  
 Phone 717-933-4114

**FARM EQUIPMENT**

**FARM EQUIPMENT**

**NOW IS THE TIME**

To get your tractors and equipment ready for spring  
 Best Rates on All Makes  
 Major or Minor Repairs

**HOUSER'S REPAIR SHOP**

Farm Equipment Service  
 1542 Lampeter Rd., Box 111  
 Lampeter, PA 17537  
 717-464-2644  
 Thomas E. Houser, Prop.

**10% MARCH DISCOUNT SALE  
 MENNO BEILER  
 NEAR NINE POINTS, PA**

Last year's price on Mc, JD, NH, NI  
 mower knives \$29 to \$45 50 each

- Mower guards
- Manure spreader webs \$124 00
- Weed control sets
- Cast and steel plow shares
- Galv and plastic pipe and fittings
- 4 in drain pipe
- New Tool boxes and tools
- Vice grip sets \$7 50
- 4 ft levels, nails
- Handyman Jacks \$30
- Manure forks
- Aluminum shovels, dirt shovels
- Grease guns and cartridges
- Lots of other items not mentioned

**NEW TRACTORS**

- IH 284D
- IH 284D 4WD
- IH 384
- IH 584 Std.
- IH 684
- IH 884
- IH H 84
- Farmall 786
- Farmall 986
- Farmall 1086

**NEW TILLAGE**

- IH 735 vari-width, auto. plow
- IH 55 Trailing Chisel Plow 13 ft.
- IH 53 3 pt. Chisel Plow 13 ft.
- IH 6000 Concertil 10 ft
- IH 4500 Vibra Shank

**NEW DISC HARROW**

- IH 122 5'6"
- IH 122 6'9"
- IH 350 10'3"
- IH 475 18'7"
- IH 501

**NEW GRAIN DRILL**

- IH 5100 16x7
- IH 5100 18x7
- Many More On Order

**USED TRACTORS**

- Farmall H
- Farmall M
- Farmall 504
- Farmall 544 w/3000 Loader
- Farmall 560
- Farmall 656
- Farmall 656D Hydro
- Farmall 666
- Farmall 706D
- Farmall 966
- IH 354
- IH 454 w/1550 Loader
- IH 656
- IH 674
- IH 784

**USED EQUIPMENT**

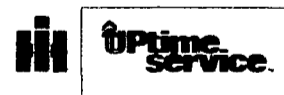
- IH 710 Plow 5 btm. Auto.
- IH 37 Disc Harrow 36 disc

**USED COMBINES**

- IH 1440 w/844 Corn head
- IH 503 w/2 heads
- IH 815 w/Grain head
- IH 205 w/Grain head

**NEW PLANTERS**

We Have 800 Series Planter In Stock



**WINTER SERVICE SPECIAL  
 10% DISCOUNT**

ON ALL PARTS AND LABOR OF IH WORK SCHEDULED IN OUR SERVICE SHOP UNTIL MARCH 1st 1981 WORK MUST BE ON MAJOR OVERHAULS OF ENGINES, TRANSMISSIONS, OR TA S. BILLS MUST TOTAL \$600 00 OR MORE AND BE ON A COD BASIS TO QUALIFY

**12 MONTH FINANCING AVAILABLE**

CALL HERB DERSTINE AND SCHEDULE YOUR JOB



**W. HOBENSACK'S SONS**

1060 GREELEY AVE.  
 IVYLAND, BUCKS CO., PA.  
 18974

1-215-675-1610 1-215-343-2101

**FARM EQUIPMENT**

**FARM EQUIPMENT**

**FORRESTER FARMS**

1337 Lincoln Highway East  
 Chambersburg, PA 17201  
 Phone: 717-263-0705  
 Sales - Parts - Service



- New Long 510DT 4WD
- New Long 360
- New Long 310
- Long 60 3 pt rotary lawn mower
- Ford 9600
- 2 Ford 9000
- Ford 8700
- Ford 8600
- Ford 6000
- 3 Ford 5000
- Ford 4500 backhoe
- Ford 4000 S U
- 5 Ford 3000
- Ford 2000
- Ford 971
- Ford 861
- Ford Jubilee
- Ford 8 SOLD
- JD & Ford weights
- Roadless 95 4WD
- Int 1066 w/c SOLD
- Int 1066, \$8900
- Int 706
- Int 574 1w/hydro
- Heat Houser for 6 SOLD
- 4 JD 4020
- JD 4020 \$6900
- JD 4010
- JD 3130 SOLD
- 3 JD 3120
- 2 JD 2130
- JD 3010
- 9 JD 2120, 1 w/new 145 loader
- JD 2030
- 3 JD 2020
- Used JD cabs for 1020, 2020, 2030
- 3 JD 1120
- D2 Cat crawler
- Jaegar irrigation pump

**USED TRACTORS**

- Ferguson 20 w/ Blade
- Case 530 D w/ Loader
- JD 4320 w/6-bot. Plow
- JD 1020 Gas
- JD 3010
- JD 1530 w/ Loader
- AC 170

**USED EQUIPMENT**

- Fox Forage Harvester with 3 Row cornhead
- New Idea 705 Uni-System with 3 Row 30" Head and Hay Pickup
- 1250 6-Row JD Cornplanter
- 6-Row AC Cornplanter
- JD 1500 No Till Seeder



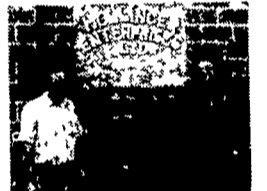
**SHOTZBERGER'S EQUIPMENT**

Elm, Pa  
 Phone: 717-665-2141

**Hollinger tractor co.**

749 Rothsville Rd., Lititz, Pa. 17543

(717) 626-1120  
 Call  
 Larry Hollinger  
 or Lee Dull  
 HOME  
 (717) 949-3451



We want your business We'll do our best to serve you Larry Hollinger, (left) and Lee Dull

**CRAWLER LOADERS**

- Cat 977H Lever Steer, ready to go \$10,500
- Cat 977H w/cab, 90% undercarriage \$14,500
- Cat 955K 85J Sharp w/ROPS \$22,500
- Cat 955 12A \$6,500
- AC HD 6 \$4,500
- AC HD6G Slant hood, sharp \$8,500
- Case 450 Backhoe Loader, sharp \$11,500
- JD 450C w/Backhoe & ROPS, Sharp \$18,500
- JD 450B w/ROPS, Sharp \$13,500
- JD 450C good undercarriage, sharp \$13,500
- JD 350C w/ROPS, Forks and Bucket \$14,500
- JD 350 w/forks \$8,500
- AC HD4 w/Backhoe, sharp \$10,500
- Cat 955H Pedal Steer sharp \$12,500

**DOZERS**

- AC 653 6 way angle w/winch \$6,500
- JD 350 6 way angle \$9,500
- JD 350 w/winch \$6,500

**BACKHOES**

- Case 580B Sharp w/ROPS \$10,500
- Case 580 excellent sharp \$6,500
- IHC 3500 sharp \$9,750
- JD 350 w/ROPS sharp \$11,500
- AC 1850 Super \$18,500
- Ford 550 w/cab 850 hours, clean w/cab \$24,500

**GRADERS**

- Gradall 2460 dsl U/D \$5,500
- AC-45 w/cab (diesel) \$6,500

**ROLLERS**

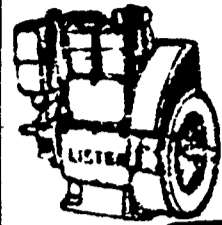
- 1 ton Rosco, like new \$1,500
- 1 ton Western with trailer \$2,500
- Patsco 3 to 5 ton lavatory Articulate \$8,500

**AIR COMPRESSORS**

- Jaeger 125 \$1,500
- Schram, w/50 hose & Jackhammer ready to go \$2,850

**TIM'S DIESEL SERVICE**

Star Route Box 2  
 Rebersburg, PA 16872



**NOW OPEN FOR BUSINESS  
 LISTER SALES  
 & SERVICE**

For lower cost per hour power, rely on



**DIESEL POWER**

For Prompt Service  
 Call  
 Bill Breon  
 814-349-5110  
 or  
 814-349-5514

**NEW EQUIPMENT**

- 310 NH baler w/engine
- 206 NI spreader
- 323 NI picker
- 8' Brillion packer seeder
- Lely fertilizer spreader
- JD 660 rake
- 20 & 24 blade pull type discs
- 9 & 10' spring harrows
- 10 & 14' Perry harrows
- 456 NH mower
- 6 ton Farm bilt wagon gear

**TRACTORS**

- 930 Case diesel
- 660 Int diesel
- 400 Farmall
- D17 & D19 Allis Chalmers
- W450 Int diesel

**USED EQUIPMENT**

- 273 NH baler
- 455 NH mower
- NI 10A spreader, rebuilt
- NI 18 spreader
- Oliver 170 spreader
- Brillion 8' packer seeder
- Oliver 12 & 14" trailer plows
- McCormick 2 way plow
- Nicholson tedder
- #9 silo filler
- McCormick PTO corn binder
- 16, 20 & 24 blade discs
- 9' spring harrow
- cultipackers

**ELIAS S. BEILER**

601 Musser School Rd.  
 Leola, Pa. 17540  
 717-656-9733

**RUBBER TIRED PAYLOADERS**

- | W5 Case   | Make Offer |
|---|------------|
| 1979 Ford A62, Dsl Articulating Machine 850 hrs         | \$28,500   |
| Hough 30  | \$6,500    |
| Hough HM w/cab new motor good tires ready to go to work | \$6,500    |

**TRAILERS**

- |  |          |
|--|----------|
| Hughes 25 ton drop deck, tandem axle           | \$5,500  |
| Patsco 25 ton drop deck, tandem axle           | \$6,500  |
| 18 Ton General Tag-Along w/air sharp Like New  | \$7,500  |
| 9 Ton General Tag-Along                        | \$2,950  |
| 1979 CMI hyd folding gooseneck 35 ton like new | \$20,000 |
| 35 ton detachable, sharp                       | \$12,500 |
| 26' Alum Dump, Sharp 54" sides                 | \$7,500  |

**TRUCKS**

- |  |          |
|--|----------|
| 1968 Dodge 10 Ton 318 engine like new                    | \$7,500  |
| 1972 GMC 10 ton w/air like new                           | \$10,500 |
| 1979 GMC 10 ton w/air 6000 miles Auto                    | \$18,500 |
| 1970 Ford Dump, 5 ton                                    | \$3,500  |
| 1973 GMC, Tandem Axle w/653 Dsl engine needs work        | \$6,500  |
| 1966 International 2000 Dsl, full screw conventional cab | \$3,500  |

**MISCELLANEOUS**

- |  |            |
|--|------------|
| Paver 25PL, like new 2 yrs old             | \$28,500   |
| (2) Winch to put on truck tractor          | Make Offer |
| Riding Sweeper                             | \$950      |
| Air Jackhammer to put on backhoe w/attachs | \$1,500    |
| Hobart Welder                              | \$850      |