

State farm grounds available for leasing

HARRISBURG — Family farmers interested in renting the farmlands and buildings at the seven state-owned farms which have been phased out of operation by the Agriculture Department in the past year should contact the Bureau of Real Estate in the Department of General Services on or before March 20, 1981.

State Agriculture Secretary Penrose Hallowell said the seven farms, at Allentown, Laurelton, Mayview, Selingsgrove, Somerset, Wernersville and Woodville are now available for leasing. The farms had been transferred to the Agriculture Department by Governor Thornburgh in an executive order on May 7, 1980.

The parcels of land and several residences on the seven phased out farms will be leased at the highest responsible bidders within the next several weeks, so that the farms can be utilized for the 1981 crop year, Hallowell said.

He noted legislation signed by Governor Thornburgh last year permits leases for an initial term of three years with two-year renewal options available.

"Family farmers who would carry on the farming tradition on these lands will be a credit to themselves and the com-

monwealth," Hallowell said. "We are particularly encouraging young individuals and those who desire to start a career in agriculture to apply for these leases."

The three farms at Norristown, Danville and Polk Center will continue operations within the Agriculture Department for another year, under revision signed by the Governor on February 23.

In that order, Governor Thornburgh noted "seven of the ten farm operations are on schedule for phaseout. However, various alternative uses for the remaining three farms have been proposed which require additional time to fully investigate and consider."

Hallowell said the intention in the original transfer was to phase out the ten operations to the best financial advantage of the state as well as to benefit the communities surrounding the lands.

He noted continued operation of the three, farms would not be a drain on the Department's budget because, "the farms will be self-funded through sales of products from all three operations."

Hallowell said dispersal sales of livestock at the Allentown farm (March 17) and Selingsgrove farm

(March 20) would go on as scheduled.

More information on the leases

for the seven farms is available by contacting James A. Keys, Bureau of Real Estate, Department of

General Services, 503 North Office Building, Harrisburg, PA 17125, or by calling 717/787-4394.

Columbia dairyman receives Land Bank nomination

LEWISBURG — Richard Kriebel, a prominent Columbia County dairy farmer has been honored by being nominated as a candidate for a 3-year term on the board of directors of the Northeastern Federal Land Bank Association and Production Credit Association of Lewisburg which has six branch offices and covers a 16 county area in Northeastern Pennsylvania.

The Kriebel farm is a family operation with the 37-year-old husband, and wife, the former Janet Burkwalter, and three of their four children very much a part of the agri-business Faith (17), Scott (15), Wendy (13), according to Mr. Kriebel, are the important cogs that spell success for an operation this size.

He added, "Mrs. Kriebel is not only a housewife and dedicated mother, but she's at the barn, or wherever I need her to help."



Richard Kriebel

The dairy farm operation consists of a total of 322 acres of which

182 are owned and 140 rented.

The 72 head dairy herd presently includes 23 registered Guernseys and 49 Holsteins. The Guernseys ranked 4th in the state of Pennsylvania with an average of 13,414 pounds of milk and 626 pounds of fat and 18,047 pounds of milk and 677 pounds of fat for the Holsteins.

They also have 56 heifers and calves to provide future replacements.

Kriebel is presently serving on the Columbia County Agriculture Stabilization Conservation Agency Committee and vice chairman of the Columbia County Planning Commission.

Kriebel is a graduate of Colledgeville-Trappe High School and the Kellogg Foundation Public Affairs Leadership Course with a travel seminar to Europe and North Africa.

The family resides one mile north of Benton on Route 2.

The Agway DNI feeding program gives these hens the nutrients they need. And without wasting dollars.



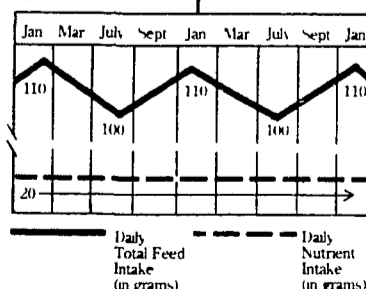
The Agway Daily Nutrient Intake (DNI) feeding program gives your birds the nutrients they need for maximum production at the lowest possible cost. The simple and efficient DNI system prevents overfeeding of expensive protein while meeting your hens' daily requirements for amino acids and other nutrients



Today there's no need to put more nutrients in your bins than your hens need

Agway High Layer 1000. During cold weather, when the birds moved up to 110 grams of feed daily, you'd switch to High Layer 1100+ to maintain daily nutrient intake at the required level. Paying for more protein than necessary can significantly affect the profitability of your business.

By monitoring your flock's intake, you'll know when to change feeds (such as Agway High Layer 900 when birds are eating just 90 grams of feed/day, or High Layer 1100+ when birds are consuming 110 grams of feed/day).



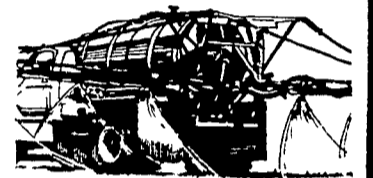
Even though your birds' feed intake varies seasonally on the Agway DNI program nutrient intake remains constant provided you change feeds based on intake

YOUR AGWAY POULTRY SPECIALIST CAN HELP SET UP A DNI PROGRAM FOR YOUR OPERATION.

Agway Poultry Enterprise specialists are available to help you set up a DNI program for your operation. You'll find that DNI is simple. All you do is watch your birds' feed intake and adjust feeds accordingly

So contact your local Agway today for more details on the DNI program — the system that makes sure your birds get the nutrients they need without wasting dollars.

APPLYING NITROGEN SOLUTION YOURSELF MAY BE A SAVING YOU CAN'T AFFORD



Custom spreading can save you wear and tear of your own equipment. And you get the advantage of having solutions applied by a custom applicator that's in top operating condition.

You also get the expertise of people who know how to apply solutions evenly and at the correct rate. Even when they're mixed with pesticides.

What's more, custom application saves you time. And an hour saved at planting time is worth a lot of money.

Before you make any fertilizer decision, visit us where you see this sign. We'll develop a fertilizer program to help you produce optimum profit yields. After all, helping you produce more is what we're here for.

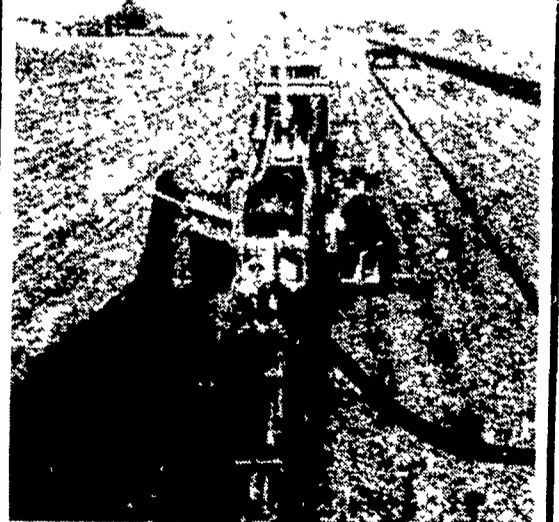
STOP & SEE OUR NEW FLOATER

BULK BLENDS
MASTER FARMER
ANHYDROUS AMMONIA

ORGANIC PLANT FOOD CO.

2313 NORMAN ROAD, LANCASTER, PA.
PHONE: 717-397-5152

MANADA CONSTRUCTION CO.



CALL US FOR YOUR TILING NEEDS

- 20 Years Experience in Tiling
 - Certified for Technical Work
- Check our prices & compare
Call for free estimates.

LARRY & VAUGHN BRUBAKER

Land Improvement Contractors
Rd 1, Myerstown, PA 17067
717-933-8853 or 933-4062

Working for people who work the land

