



Lots of note taking and pedigree checking assured the Japanese they saw good Holstein breeding stock at Penn Gate Farms. The four Japanese, from left, are: N. Yanagawa, F. Fukumoto, K. Okada, and R. Ishida. Looking on in background are Bill Nichol, Pennsylvania Holstein Association; and Robert E. Gitt, Penn Gate owner.

## Penn Gate

(Continued from Page A22)

visits the United States two or three times yearly on buying trips for top animals.

Fukumoto is livestock specialist with NOSAWA, a Japanese trading company specializing in international agriculture trade. He was key spokesman for the group, which also included Dr. Kazutoshi Okada and Nori Yanagawa, representing the Japan Holstein Breeding Service, and Ray Ishida, director of NOSAWA.

The Japanese Holstein Breeding Service looks for good type and

conformity in potential sire purchases, preferably bulls scored Excellent. They must carry a strong, deep pedigree, ideally with two or three Excellent dams, or Very Good dams with records over 25,000 milk. Their sires must be well-known and plus proven.

The few bulls that the delegation will ultimately choose on this trip will be flown from San Francisco to the stud at Sapporo, on Hokkaido, the northern island of Japan. There are currently 35 U.S. Holstein bulls at Sapporo now, including an Elevation son of Northcroft Elevation Ella. Ella is owned by York Countian George Knight and was selected the Supreme Champion cow at the

Madison, Wisconsin, Central National Show last Fall.

According to the delegation members, about 95 percent of all cattle breeding in Japan is done by artificial insemination, a larger percentage than in the U.S.

There are approximately 120,000 dairy herds in Japan, with an average number of about 12 cows and an equal number of heifers being raised.

On Hokkaido, which is the prime agriculture and dairy production area of Japan, dairy herds range closer to double that national average.

Production per cow is about 10,000 pounds milk and payment is made at a 3.5 butterfat level



N. Yanagawa of the Japan Holstein Breeding Service measures Penn Gate Wallie Skystar as Pennsylvania Governor Richard Thornburgh, right, and Skystar's breeder Robert E. Gitt look on.

Fukumoto says that Japanese dairy farmers receive about twice the price for milk now being paid to American dairymen.

Then with a hint of a teasing grin he adds, "But then we have to buy all that expensive United States grain, too."

Corn and grass silages can be made in Japan, but a large portion of the grain ration must be imported. Much of the dried hay must also be shipped into Japan as well, with Fukumoto guessing that price at about 17 cents per pound, or \$340 per ton.

In spite of high feed costs, Japanese farmers share the U.S. domestic problem of overproduction and milk surpluses. Strict base amounts are set on milk production per farm and excess milk produced over that must be used by the farmer, most fed to calves.

That milk surplus has had a dramatic effect on the export market for U.S. Holsteins. Some 1500 head were purchased in 1979, while in 1980, that figure dropped to only 630.



## DIAMOND CAGE SYSTEMS

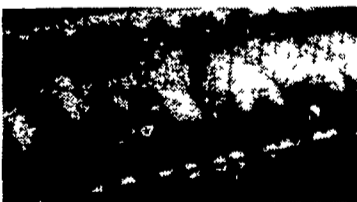
### THE SPACE SAVER - 4 HIGH STACKED The Best Equipment For Converting Old Poultry Houses To Maximum Density

Thinking about making better use of your old poultry houses? Here's the answer.

With Diamond's 4 High Stacked Layer Cage System you can increase the bird density of an old stair step cage house from 30,000 birds to 108,000. And that's without adding a single square foot of floor space. The system B11 is just 73" high and 60" wide.

If ceiling height permits you can increase bird density even more up to 135,000 birds with the 5 High System B12 or 162,000 birds with the 6-High System B13.

With new construction you reduce your over-all investment per bird by putting more birds in a building and utilizing the otherwise wasted vertical space.

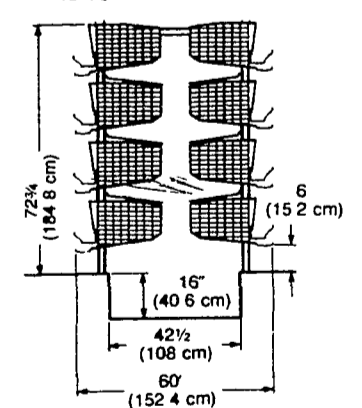
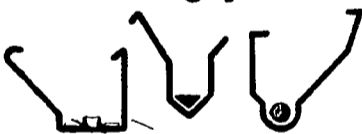


### House Capacity, 4 High Stacked

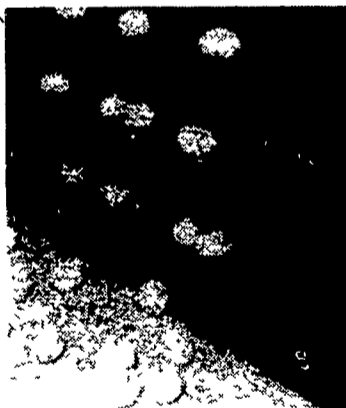
- 4 Rows - 200' - 28,800 Birds
- 4 Rows - 300' - 43,200 Birds
- 6 Rows - 400' - 86,400 Birds

The Diamond Stacked Layer Cage System is available with your choice of three feeding systems: the Flat Chain, F80 Deep V, or Link Chain. And three watering systems: troughs, cups or nipples. Doors are located on front of all cages. Installation is fast and easy.

#### Three feeding systems



Manure is deposited on rust proof fiber glass manure chutes under each tier of cages and removed automatically by a Diamond manure removal system proven over 12 years.



Eggs are collected automatically by a special high capacity system designed for the Stacked System. Plastic or woven fabric belts are available. Let Diamond take you higher than anyone else in the business with the new Stacked Layer Cage System.

### Super High House Density Means Lower Investment Per Bird.

For producers who want the maximum house density in new facilities or converted buildings Diamond has developed the Stacked Layer Cage System. This new system is available for deep pit houses and houses with pit scrapers or flat concrete slab.

★ FULL LINE PARTS DEPARTMENT

★ WE SELL, SERVICE AND INSTALL

LET OUR EXPERIENCE WORK FOR YOU.

SERVING THE POULTRY INDUSTRY OVER 20 YEARS.



## SEARCHING

FOR A GOOD BUY? YOU'LL FIND IT IN CLASSIFIEDS



## The new shift to Yanmar.

There's one very simple reason why your new compact Diesel tractor should be Yanmar: we offer you features you can't get from anybody else.

#### Exclusive Power Shift

The shift is on to Yanmar because Yanmar has the shift — the power shift no other compact diesel tractor offers.

The Yanmar Power Shift lets you shift on the go without clutching. Yanmar's power shift gives you the ease of automatic without the 25 to 30% power loss of hydraulic or hydrostatic type transmissions. You save time. You save effort. Every working hour becomes more productive. More rewarding.

#### Live PTO (Power take-off)

With a regular PTO your attachment is not driven unless your tractor is moving. That means uneven work until your tractor gets up to operating speed.

Yanmar's 2 speed Live PTO keeps your attachments moving at full power even when your tractor is stopped. You get more consistent work and sure going through the toughest spots.

#### Diesel Economy

As the world's largest manufacturer of small diesel engines Yanmar gives you time-tested fuel squeezing diesel economy. Smooth, quiet running Yanmar Diesel power means no electrical ignition system to go out of wack, no spark plugs to replace — and above all lower fuel bills.

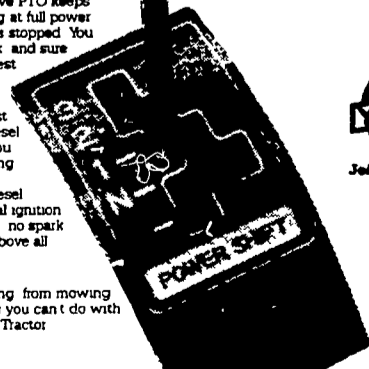
#### Versatility

From tilling to plowing, from mowing to hoeing, there's nothing you can't do with a rugged reliable Yanmar Tractor.

#### Dependability

Performance proven in the toughest jobs around the world, Yanmar Tractors are built to last. And last.

Join the new shift to Yanmar, and find out what a compact diesel tractor should be.



Join the new shift to Yanmar.

## MARTIN HARDWARE & EQUIPMENT CO.

Rt. 501, 1 1/2 Miles South of Schaefferstown, PA  
Phone 717-949-6817  
Open Mon.-Fri. 8 to 8; Wed. 8 to 12; Sat. 8 to 5