

## Public Sales Register

Closing Date - Monday, 5:00 P.M.  
of each week's publication

SAT MAR 21 H H Mylin Inventory Reduction & Consignment Sale of Tractors, Self-Propelled Combines, Trucks, Farm Machinery & Miscellaneous Located 1 1/2 miles West of Junction U.S. 15 & 180, Union Co., Pa. George Detrick Auctioneer. Full listing March 7 & 14.

SAT MARCH 21 6:30 P.M. Danville Livestock Market horse sale. Located Old Route 11, Danville, PA Melvin M. Lehman, owner.

SAT MAR 21 Public Sale of Farm Equipment, Tools, Etc. Located 1 1/2 miles south of Wernersville, PA Harry J. Boyer Estate Paul E. Bixler and Gerald G. Kramer Auctioneers.

MON MAR 23 M M Weaver & Sons Inc Annual Public Auction of New and Used Farm Equipment located on North Groffdale Road, Leola Pa. John E. and Paul E. Martin Auctioneer.

MON MAR 23 10:00 A.M. RE 1:00 P.M. Public Sale of Valuable Farrow to Finish hog operation modern Farm Machinery and Hog Equipment located at Rt 1 Womelesdorf PA turn north off Rt 422 2 miles east of Myerstown onto Wintersville Rd., continue to Deck Rd. turn Right 1/2 mile to farm Sale for Mr & Mrs Clifford Grube Harry H. Bachman Auctioneer.

MON MARCH 23 10 A.M. Public Sale of 128

Machinery Located on Rt 1, Womelesdorf Berks Co. Pa. Turn off Rt 422 2 miles East of Myerstown onto Wintersville Rd to 3rd stop sign & turn right to farm Sale by Clifford Grube Auctioneer Harry Bachman.

MON MARCH 23, 2 P.M. Danville Livestock Market cattle and hog auction. Located Old Route 11, Danville PA Melvin M. Lehman owner.

TUES MAR 24 - 11:00 A.M. George W. Hayes Complete Dispersal of Holsteins Held at the farm from 181 take Exit 26 go north on Rt 220 (Formerly Rt 120) about 3/4 miles to first crossroads, turn right, go 2 miles to village of Rote. Go thru stop sign for 1/2 mile to first crossroads, turn left, follow 1 mile to T turn right and 1 mile to farm on left George Hayes Owner Sale manager Austin Backus Inc.

TUES MAR 24 Held at Ulysses, PA Potter Co

Marji Farms Complete Dispersal of Holstein Cattle and Machinery, James and Mary Lynn Smith Owners Sale by Robert M. Shaylor and Jerry Pirrung.

WED MAR 25 11 A.M. Public Sale of Farm Equipment. Located on Airport Rd., Northwest of Bethel, Pa. Sale for Cletus Doutrich Auctioneer Sylvan Witmer.

WED MAR 25 10:00 A.M. Public Sale of Antiques and Collectibles. Located at Lykens Valley Shop and Play Hall Rt 209, Lykens PA. Sale conducted by Lee D. Dockey.

WED MAR 25 9:30 A.M. Public Sale Annual Public Sale of Tractors and Machinery Held at George V. Seiple & Son Rd 2, Van Buren Rd Easton, PA. Kist & Hartz Auctioneers.

WED MAR 25 9:30 A.M. Public Auction of 48 head Registered and Grade Holstein Heifers, Farm Equipment, Hay and Ear Corn for Mr & Mrs Jacob R. Diller, 717-762-7946. Located near Leitersburg, Maryland Robert Mullen dore, Auctioneer.

WED MAR 25 2:00 P.M. Public Sale of 103 acre

Lancaster Co Farm East Drumore and Colerain Twp. and 25 acre Lancaster Co farm Colerain Twp. Take Rt 222 south of Quarryville to Dry Wells Rd. Dry Wells Rd.

(Approx 1/2 mile east) to St Catherine's Dr., south to second farm. Terms by Robert N. and Lillian M. Graeff, T. Glenn Horst and Timothy G. Horst Auctioneers.

## PUBLIC AUCTION

VALUABLE 123 ACRE  
LEBANON COUNTY FARM  
& FARM EQUIPMENT  
SATURDAY, MARCH 28

10:00 A.M.

Located along the Colebrook Road app. 2 miles North of the Village of Master-sonville, Pa.

Real Estate to be offered at 10:00 A.M. Consists of 123 Acres M/L Farmland located in South Londenderry Twp. Lebanon County Penna. Thereon erected a large barn and equipment storage area, with cattle feeding barn attached. 60' trough and feeding unit, 20'x80' concrete silo with feed ezy silo unloader.

Farm inspection anytime or by appointment with auctioneers.

The following machinery and equipment has been well maintained

John Deere Tractors 2840 app. 500 hrs. 1520 with 1325 hrs. with front end loader, Massey Ferguson 35 "Nice", IHC 16 hoe grain drill about "new", 3 bottom 16" I.H.C. plow about new. N.H. 519 Manure Spreader, J.D. 7' Mower, 30' N.H. elevator, 16' little giant elevator, new 20' grain or feed auger, Mohawk Chisel plow, 4 wagons, 5' Bush hog, dump trailer, John Deere offset disc 10' Brady 12' portable harrow, John Deere 4 row cornplanter, John Deere 10' rake new, N.H. 68 Baler, 20' high speed conveyer, N.H. Crimper, post hole digger, Misc. lumber, locust posts, hay app. 10 tons, metal feed racks.

9 Angus cows - 10 head young Angus Cattle, various weights 450 to 1000 lbs.

Sale By  
**WALTER H. & GLADYS M. WEBER**

Attys. Seigrist, Koller & Brightbill

*E.M. Murry Associates*

287 Lime Rock Road  
Lititz, PA 17543  
Elmer Murry 626-5244 - 626-2636  
Richard Murry 626-8175 - 949-2280  
Ken Miller 665-2073  
Professional Auctioneers  
Appraisers, and Advisors  
Since 1953

## PUBLIC SALE

FARM MACHINERY  
THURSDAY, MARCH 12

AT 12:00 NOON

(Snow Date the following Thursday)  
Estate of the late Ralph "Butch" Ackerson, Jr. Located at Pequest Road, Green Township, Sussex County, (between Huntsville & Greendell).

4 TRACTORS

966 Int. Diesel, 706 Int. Diesel, 806 Int. Diesel, Int. 2350 Loader (2 yrs. old), 460 Int. Diesel, 1 1/2" Delaval stainless steel pipeline mulker (75 cow capacity), 2 bulk tanks, (approx. 700 and 200 gal. each), 70 ton ear corn, 1 full silo (corn silage), 1 half-full silo (corn silage), 3000 bales hay, 1 N.H. mixer grinder (354), 1 N.H. Haybine (469), 1 N.H. Hay Rake, 1 N.H. baler (275), 1 J.D. kicker baler (346), 1 J.D. 4 row plateless planter (1240), 1 J.D. 16 ft. harrow, 1 Meyers chuck wagon (with roof), 1 Int. 6 bottom plow (14 in.) (700), 1 A.C. Chopper (2 Row-720), 1 A.C. No-Till 4 Row Planter, 1 A.C. combine with bin, 1 Gehl Chopper (300) (1 row), 2 2 row mounted corn picker, 3 kicker wagons, 1 feeder wagon, 3 grain wagons, 1 Patz silo unloader (14-16 ft. 2 yrs. old), 1 fertilizer spreader spinner, 1 36 ft. elevator (Farmec), 1 Ford 5 bt. plow, 1 250 gal. fuel tank (with pump), 1 new 3 h p EC motor.

TERMS: CASH OR GOOD CHECK.  
NOT RESPONSIBLE FOR DAMAGES INCURRED

SELLER:  
**MRS. RALPH ACKERSON, JR.**  
Nelson C. Weidenbaugh, Auctioneer  
Sales Manager: Harold Pittenger  
Phone: 786-5772, 786-5036  
Auctioneer: 215-948-7619



## SATURDAY, MARCH 14, 1981

9:00 A.M.

Auctioning Trucks, Farm Equipment, Shop Equipment, Office Furniture and Supplies at Columbia Equipment Co. Inc., just south of Bloomsburg, Pennsylvania, on Route 11.

### TRUCKS AND TRACTORS

1979 Ford, Deluxe Roll Back, F350 Custom with 12-foot bed (15,900 miles); 1963 Ford 7000 Diesel, Grove Delux Roll Back with 24-foot bed; 1979 Ford Pickup, 22,000 miles; Massey Harris, super twin power 101 tractor; Fordson Major diesel tractor (needs work) Minneapolis-Moline 445 tractor with fork lift.

### FARM AND GARDEN EQUIPMENT

Small Transport Disc; John Deere four-row cornplanter; Ford five bottom plow frame; Ford 900 corn picker; Deereborn two row corn planter Disc; Two Ford manure forks; mid-mounted mower; dual wheels for Ford 8000 tractor; Ford 7.5 garden tractor with mower; Disc Harrow for garden tractor; 50-inch grass mower (fits 72 and up Ford); windbreaker for Ford Tractor; McCulloch Mac 70; weed cutter; miscellaneous new parts for Ford 8000 (for short block - crank, piston, connecting rods).

### SHOP EQUIPMENT

Heavy duty and light weight metal tables and benches, parts bins (40 or more), many display stands and racks, Schauer Battery Charger, model FC89; large shop air compressor, one HP Leland motor; 180 amp Marquette Welder; Champion Spark Plug Cleaner; tire changer; chain saw sharpener machine and rivet machine; saw links, couplamatic connector for hydraulic hose with dies; two stand grinders; small metal lathe, hydraulic jacks, calcium pump; Allen battery charger; valve facing machine; Pop Test for diesel injection; clutch jig, compression gauge; Marquette Generator-Alternator-Regulator tester; set of reamers; drill bits; torque wrench; gear pullers; Homecraft drill press; special tools for 600 and 800 hydraulic; hand press; water high pressure 900 lb washer (Citation model 1000); Steam Jenny; Dynamometer P400A; special tools for 100 line tractors; log chains and binders; Gulf Battery analyzer; six sixty gallon drum oil dispensing units; 1/2, 1, 2, and 3 ton chain hoist; Stratton Hydro floor crane; acetylene torch; truck tools box; two air wrenches; 275 gallon kerosene tank with electric pump; fire extinguishers; hand truck and cart; pressure grease can; many log chains; grease guns; bench vises; oxygen and acetylene tanks.

### OFFICE SUPPLIES

Inventory file tables, 3M Photo copier; check writer; office cabinets; office desk and chairs; two and four drawer file cabinets; Bell & Howell Filmosound 35 machine; NCR adding machine; Remington typewriter; three Fanon Direct wireless intercoms; National Cash Register; Smith Corona adding machine; microfiche viewer; GE refrigerator; lawn chairs; Seven-Up machine, coin operated; Centurion alarm system; display racks; foreman's desk; McCulloch chain saw clock.

### PARTS AND MISCELLANEOUS ITEMS

Many boxes of nuts, bolts of all kinds; steel-pressed chain; Woods corn picker parts; sprayer parts; hydraulic hose; Grove Wagon spindle; cotter pins; PTO adaptors; Woods rotary cutter belts; Trostel O-rings; Triumph mower parts; many Ford gasket sets; rebuilt starter and generator for 600-800 Fords; rebuilt alternator; hitch pins, hydraulic pump for 5000; pesticide boxes for planter; two 5-gallon cans latex white paint, new and used tractor batteries; 5000 block; tires for lawn and garden tractors; tractor tire chains 13-6-16; power take-off; oil, hydraulic oil and brake oil, 3/8 log chain; miscellaneous pipe fittings; plow shares; 16-9-28 innertubes, Pennzoil 27; Ford frogs; 3-point hitch top arms, V-belts, top links; back hoe bucket teeth; tractor seat covers; upright mufflers for Ford 8N; mufflers for 2, 3, and 5000; fanny flags; many parts and lots of scrap iron not listed.

TERMS OF SALE - Cash or Approved Check

SELLER -  
Sale by Secured Party: The Columbia County Farmer's National Bank  
Statements made day of sale take precedence over all written material.

### HOCK'S AUCTION SERVICE

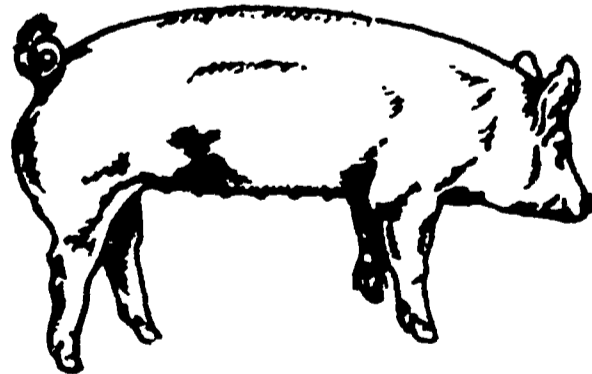
Donald E. Hock - 784-7849 George J. Henry - 799-5351  
Members of Local, State and National Auctioneers Association

## PA INVITATIONAL SHOW & SALE

By PA Yorkshire Co-op Assoc. Inc.

SATURDAY, MARCH 21

Show 10:00 A.M. Sale 1:00 P.M.



20 Bred Gilts 30 Open Gilts 10 Boars

Auctioneer's Note - Breeders from New York and PA are consigning the top end of their production, quality will be high.

Sale Dates to Remember  
Arnolds Sale - February 28  
Thomas Sale - March 6  
Keystone Classic - March 7

For Information or Catalogs  
(available Mar. 10)

Write or Call

**Leon L. Arnold**  
Rt. 7 Box 705, Lebanon, PA 17042  
717-273-5880