

York urges cooperation in dairy industry

LEWISBURG — John C. York, a veteran dairy industry specialist and consultant, has urged cooperation and long-term measures as solutions to current dairy industry problems.

York said he believes the dairy industry is one of the most efficient in the country and getting more efficient each year.

The time required to work to purchase a half-gallon of milk has gone down from 10.9 minutes in 1967 to 8.9 minutes last year, said York. We should not act out of haste and hysteria to fix something that is working well in reference to the dairy industry.

Scare tactics employed by some during the seasonal spring

heavy milk production period has surfaced year after year. This year such tactics are again before us. Those persons lacking maturity and experience who are speaking out on dairy issues can cause serious damage to the industry.

Undue skepticism, fear and emotion will only result in depressing handling allowances, reducing the manufacturing of products, and discouraging the industry from carrying an inventory reserve of manufactured products. This is the time when the industry should demonstrate courage, wisdom and a sense of unity not only among producers but handlers as well.

The abundant supply of milk

can evaporate as quickly as it developed. One must recall what happened in the sixties, or even as late as the seventies, when United States milk production dropped by 4.5 billion pounds in one year from 1972 to 1973. It will happen again.

The current supply of milk has largely been created by factors outside of the industry but closely related to it. Those factors are

- low grain prices occasioned by the Russian grain embargo,
- relatively low beef prices, and
- non-attractive alternatives to dairying during the past two years.

The above factors are likely to change significantly during the year which, in turn, will reduce the pattern of milk production

dramatically in the next 36 months. This is not to mention what effect rising fuel costs, interest rates, and the high investment necessary to enter the business will have upon future milk production.

Milk supplies will likely increase during the year before they come down. Measures suggested in the past to insure milk supplies to more closely fit market requirements have not met with favor. Surpluses and shortages are part of the system.

It is regrettable the industry has not been expressed to the public fairly or realistically. The reserve supply of storable dairy products should be considered as an asset to our national and international needs.

The cost of the dairy support

price program has been grossly exaggerated. The figures that are being peddled, ranging from 1.3 to 1.5 billion dollars for this fiscal year, do not take into consideration the inventory value of the products held by the Commodity Credit Corporation under the dairy support price program.

The net net cost is only a fraction of what is being publicized. It will be close to 300 million dollars or about 15 percent of what is so often mentioned. It is a small price to pay to maintain a stable food industry so vital to the economy of the nation.

The dairy industry can talk itself into trouble by scare tactics. The nation cannot afford another experience like the one the United States auto industry is currently going through, concluded York.

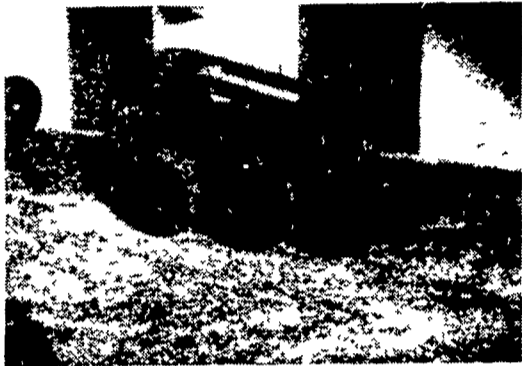
N.Y. firm loses license

FANCHER, N.Y. — A New York firm, Howard Farms, Inc., of Fancher, has become ineligible to operate in the produce industry under the Perishable Agricultural Commodities Act as a result of its failure to pay a reparation award of \$92,134.

The award was issued by USDA in favor of a Texas shipper from numerous lots of cabbage shipped during April and May of 1979. Howard Farms, Inc. answered the shipper's charges, but based on evidence, the U.S. Department of Agriculture ordered payment of the amount claimed.

The firm may not operate in the produce industry under the PACA until the award is paid. The firm's officers, directors, and major stockholders, V. Brodie Howard, Theodore M. Howard, and Stephen D. Howard, may not be employed by or affiliated with any PACA licensee without USDA approval.

Charles Brader, an official with USDA's Agricultural Marketing Service, said the act provides for damages to be paid by those who fail to meet their contractual obligations in buying and selling fresh and frozen fruits and vegetables.



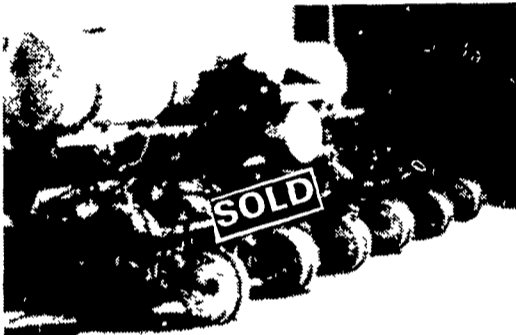
John Deere 24 Skid Steer Loader \$3950



John Deere 1250 6 Row Planter \$3850



John Deere 894A 8 Row 30" Planter A-1 Shape \$2350



IHC 6-Row Cyclone Planter w/Liquid Fertilizer \$1950

USED TRACTORS

IHC Super C fast hitch w/2 bottom plow	\$1,675.00	\$1,525.00
Farmall M, power steering and live hydraulics		1,250.00

USED HARVESTER SPECIALS

NH 880 2 row narrow row head	\$3,650.00	\$3,300.00
NH 717	1,175.00	1,050.00
Fox 1000 RPM PTO w/2 row corn hd PK up attach	1,495.00	1,350.00

USED BALER SPECIALS

JD 24T w/#2 ejector	\$1,650.00	\$1,475.00
JD 24T w/#2 thrower	1,550.00	1,395.00
AC 444	850.00	775.00
John Deere 14T	750.00	675.00
John Deere 14T w/ejector	450.00	400.00
Ford 530 w/thrower		1,850.00

USED TILLAGE SPECIALS

Brillion 12 Roller Harrow		\$1,475.00
Bush Hog 10 Disc		1,250.00
Oliver Disc Harrow	1,175.00	1,050.00
Ford 4 16 Plow	950.00	850.00
JD KBA 32x18 Wheel Carrier Disc	875.00	750.00

USED COMBINE SPECIALS

JD 55 Diesel w/cab, 12 Platform	\$7,500.00	\$6,750.00
JD 6600 Diesel w/643 Corn Head & 13' Platform		38,500.00
Cockshutt 427 w/Power Steering & 10' Platform	1,450.00	1,300.00
IHC w/10' Platform		1,175.00

USED PLANTER SPECIALS

JD 1250 6 Row Plateless		\$2,150.00
JD 494A		950.00
JD 494	850.00	770.00
Ford 2 Row 3 pt	SOLD	350.00

USED MOWER CONDITIONERS HAYBINES

New Holland 479, as is	\$2,150.00	\$1,925.00
NH 469		2,150.00
John Deere 1209		3,300.00

MISCELLANEOUS

John Deere 148 Loader	\$2,200.00	\$1,975.00
John Deere #58 Loader A 1 Shape	1,800.00	1,600.00
New Set 18 4x30 Snap on Duals w/New Goodyear 6 Ply Tires	1,050.00	945.00
NH #8 Crop carrier	1,150.00	1,025.00

JD & NH HAY TOOL REPLACEMENT PARTS SPECIAL

MARCH 1st thru 15th

Over-the-Counter Sales

5% Cash Discount

\$50.00 to \$100.00

10% Cash Discount

\$100.00 or More

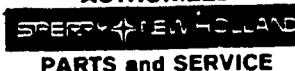
We have plenty on hand for the season ahead. See us now!



Evergreen Tractor Co. Inc.

30 EVERGREEN RD., LEBANON, PA 17042, PHONE (717) 272-4641

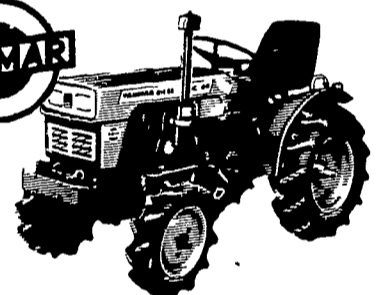
AUTHORIZED



PARTS and SERVICE

WHY BUY YANMAR ?

HERE ARE 7 REASONS THE COMPETITORS WISH THEY HAD...



- 1 YANMAR - The only compact diesel with industrial wet sleeve engine.
- 2 YANMAR - The only compact diesel in which all models have front wheel gear drive instead of universal joint. Benefit. Shorter turning
- 3 YANMAR - The compact diesel with all models having cast iron rear end housing
- 4 YANMAR - The only compact diesel that does not need GLO plug to start engine.
- 5 YANMAR - The only compact diesel with choice of automatic shift (no power loss on automatic) or manual shift
- 6 YANMAR - The only compact diesel with shift on-the-go in some models.
- 7 YANMAR COMPANY is the world's largest small diesel engine manufacturer.

You Read The 7 Reasons... But The Cost Of Buying A Yanmar Is The Icing On The Cake!

MARCH SPECIAL

Model 155 AD
4 WD, AG TIRES,
15 HP MANUAL SHIFT

List \$4995
SPECIAL

\$3895

NOW ASK YOURSELF... SHOULD I OWN A YANMAR?

'SERVICE IS OUR MOTTO'

LAWN CARE OF PA.

SALES & SERVICE

Martindale, PA 17549
1 Mile North of Martindale
on Grist Mill Road
PH 215-445-4541

Mon., Tues., Thurs., Fri 8-8
Wed 8-5, Sat 8-2
"A little out of the way
but a lot less to pay"