

# Good records improve efficiency

LITIZ — Many farmers are now using fuel needs to boost their operational efficiency. Besides showing which tractor is practical for which job, good fuel records can spot an engine in need of repair, tell how much fuel can be saved by combining two field operations, or determine the most energy-efficient tillage scheme.

Farm machinery experts at Massey-Ferguson cite sound reasons for keeping accurate fuel records. Fuel-use averages for nearly every field operation are, of course, available. But fuel-use varies widely from farm to farm. One university study, for example, shows that diesel fuel consumption for moldboard plowing ranged from .91 to 3.64 gallons per acre.

Factors that influence fuel consumption include the tractor's age, size and condition, ground speed, slippage, soil type and condition, tillage depth, and condition and adjustment of the implement.

Mt. farm machinery experts report it takes only a few minutes each day to keep completely accurate fuel records. Start with a fuel meter for each storage tank on the farm, they're available from your fuel dealer for about \$85. Also needed will be one notebook for each tractor, combine or other power unit.

Provide for at least six entries in tractor notebooks: type of operation, tillage depth, speed, acres, fuel used, and hours. Ad-

ditionally, columns may be provided for soil condition or other influencing factors. Make entries each time the fuel tank is filled to that the amount of fuel used per acre can be determined.

For cars, trucks and pickups, only keep track of miles traveled and fuel used.

With these figures at hand, it can be evaluated where each gallon of fuel went, and why. Then, operators can more effectively match equipment to field work, and trim back or eliminate inefficient operations.

As one university agricultural engineer put it:

You can't make wise fuel management decisions without complete, accurate fuel-use records.

# Adams-York calfarama

YORK — "Trade a bit o' green for some black and white and make your own St. Patrick's Day good luck with a calf from the Adams-York Calfarama Sale."

That's the invitation issued from Phil Laughman and Stanley Weimer, co-chairman for the third annual Adams-York Calfarama registered calf sale, set for March 17 at Avalong Farms, York, beginning at 7:30 p.m.

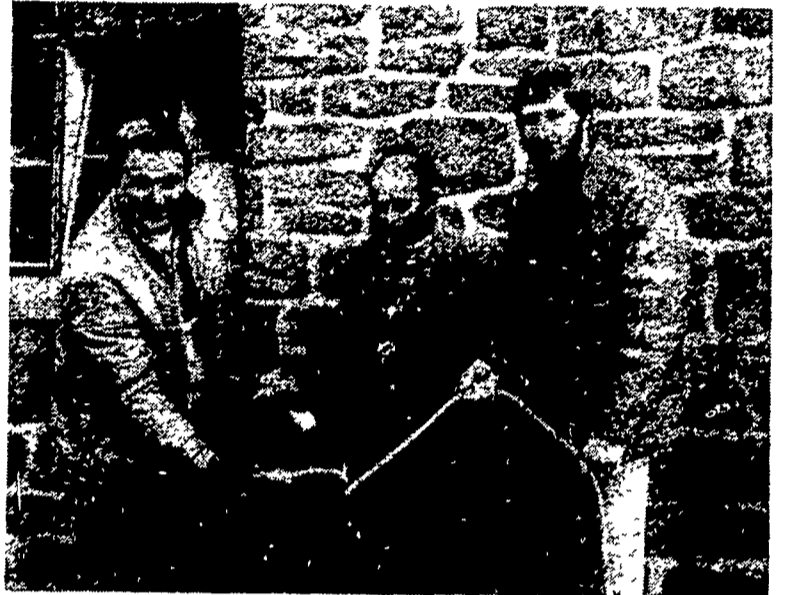
Fifty purebred heifers, from calf to yearling ages, will be offered through the sale ring. Popular sires represented in the listing include Astronaut, Jemini, Mars, Milestone.

Fifteen of the consignments are

from dams with over 18,000 pounds of milk and these calves are all well-suited for 4-H and FFA dairy project animals. Also included in the sale line-up are two red and white calves.

Additional information is available on the consignments from Phil Laughman, Thomasville R2, or Stanley Weimer, New Oxford R2. Sale manager is Remsburg Sale Service of Jefferson, Maryland.

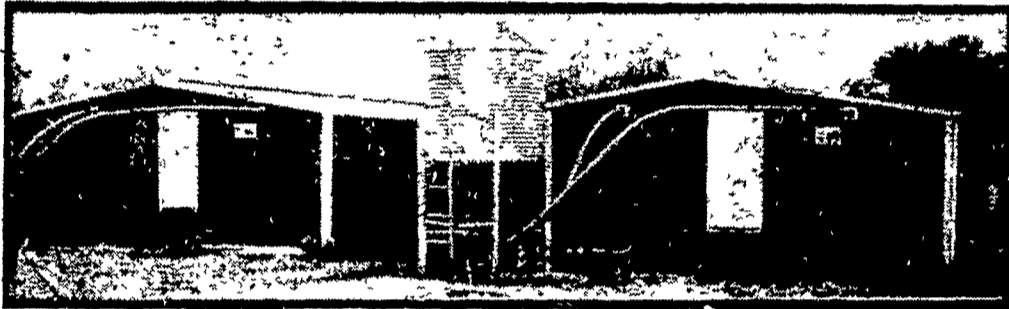
Avalong Farms is adjacent to the Route 30 bypass at the Mt. Zion Road exit, and the barn is just west of the Avalong Farms Dairy Bar and Restaurant, on Whiteford Road.



Avalong Astro Martha Margo, by Astronaut, is one of the headliners of the March 17 Adams-York Calfarama. Margo's dam is by Elevation, and milked a three-year record of 19,015 of milk with 814 of fat. Helping with her selection were, from left, Larry Ampsacher, Ed Johnson and Doug Cope, representing the York Holstein Association.

**IF YOU'RE BUYING GRAIN AND HOG EQUIPMENT  
ASK YOURSELF - DO THEY HAVE PARTS & SERVICE? HERR'S DOES!**

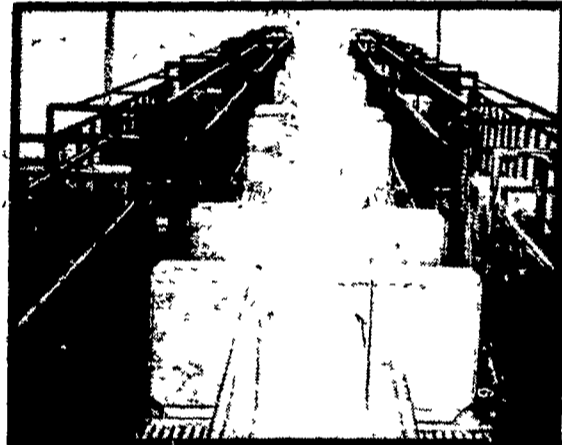
## THE COMPLETE SYSTEM BUILDING



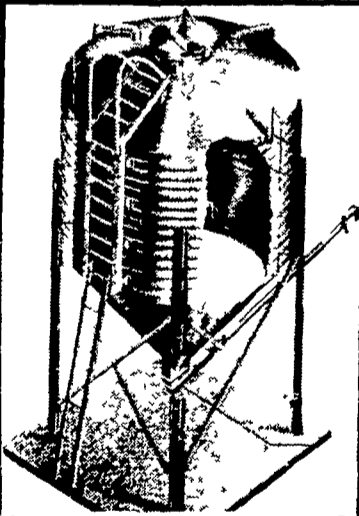
### SWINE & CALF CASTLE



**Having Problems  
Raising Swine or  
Calves?  
Let Us Show You  
a Castle**



**SOW CASTLE  
As Low As \$1500  
Per Head with or without  
self contained pit**

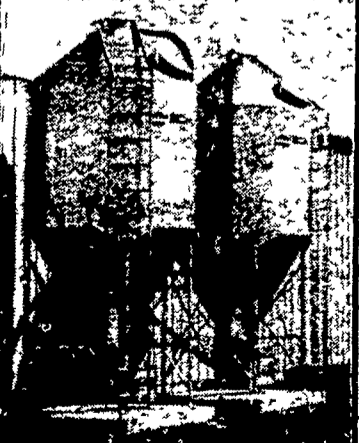


### READ FEED BINS

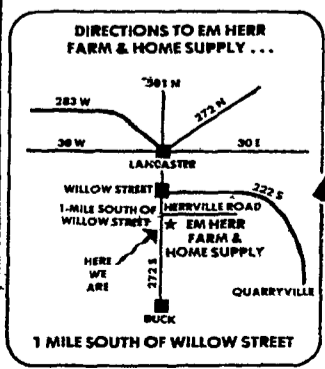


### GSI BINS

- FEATURING:**
- All galvanized steel with G 90 galvanized coating, including galvanized doors
  - Our steel is A446 Quality or a minimum yield of 40,000 pounds per square inch
  - Walk around steps on top of roof
  - Equipped with safety rings
  - No welding anywhere on roof prevents rust
  - Slotted holes to raise & lower roof for air movement for drying



### SCHULD BULK STORAGE BINS



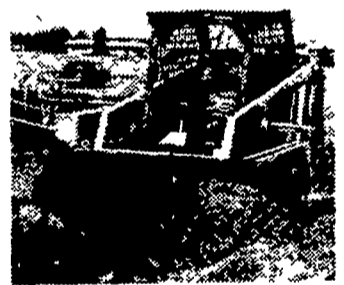
**EMHERR EQUIPMENT, INC.**  
FARM & HOME SUPPLY  
222 S. 1 MILE SOUTH OF WILLOW STREET, PA.  
Phone: (717) 464-3321

SERVING THE INDUSTRY OVER 20 YEARS

## FIRST AND FOREMOST SKID STEER LOADER



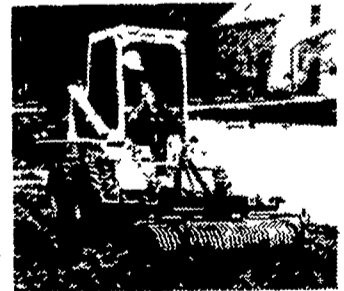
TURN THE BOBCAT into a backhoe, forklift, grapple, too. Does the work of many one-job machines.



EXCAVATE, scarify, rake, plow and remove snow, clean barns, sheds, drill postholes. Bobcat does it.



THE BOBCAT comes as narrow as 35" built low to work in tight areas turns full circle in its own tracks.



BUY OR RENT a variety of buckets and other attachments. Bob-Tach locks them on fast and solid.

### LET US DEMONSTRATE

what the Melroe Bobcat loader can do for you. Drop in or call Bobcat—for the new breed of farmer and contractor.



**bobcat**

**GRUMELLI'S FARM EQUIPMENT**  
Quarryville PA 17566  
Ph 717 786-7318  
Ray Showalter 717-665-7174

**RHODES EQUIPMENT**  
1085 Industrial Blvd  
Southampton PA 18965  
Ph 215-677-6000

**NORMAN D. CLARK & SON**  
Honey Grove PA 17035  
Ph 717 734-3682

**SWOPE & BASHORE, INC.**  
RD 1 Myerstown, PA  
(on Rt. 645 in Frystown)  
717 933-4138



CLARK