

# Corn hybrids for reduced tillage farms

LITITZ - As the public and farmers become increasingly concerned about the loss of farmland, the methods of farming are changing. Each year prime agricultural land is lost forever due to new highways, shopping centers, factories and homes. Some state, county and local governments are beginning to react to this disturbing trend by adopting laws to make it much more difficult to convert prime agricultural land to other uses.

In addition to the losses described above, farmers are spending even more time and money to prevent the loss of irreplaceable land due to wind and

water erosion.

During the past three years many farmers in the traditional fall plowing regions of the country have switched to various methods of reduced tillage on corn ground. And as the equipment for reduced and no-till farming becomes more sophisticated, you will undoubtedly see more reduced tillage in the future. (Iowa presently has 43% of its cropland in some type of reduced tillage system.)

When selecting hybrids for reduced tillage or no-till systems, there are some points to consider:

1. Excellent seedling vigor especially in continuous corn, heavy crop residues, and heavy or

Fast emergence reduces the potential of insects, rodents, birds, and seedling disease, reducing the percent emerged.

2. Disease and insect resistance, the crop residue offers some degree of increased disease and insect problems.

Northern and southern corn leaf blight and anthracnose are probably the most important. In northern areas, eyespot and yellow leaf blight might be seen. European corn borer, common stalk borer and grasshoppers are insects to stay alert for as they overwinter in crop and weed residue.

3. Rapid plant growth allows the plants to get above the residue and absorb more sunlight at the critical stage when potential ear size is determined, approximately 15 days after emergence.

4. High yields. No matter what criteria are used to select hybrids, the one which pays the bills is yield. More and more no-till plot


trials and county extension agents

Therefore, it is becoming less difficult to obtain performance data on hybrids.

If no-till or reduced tillage is in your plans for the future, be prepared to learn all that you can before you employ this system. It can work if you take the time to do it right.

WHEN IT COMES TO...  
**FIRE**  
.....DON'T PLAY AROUND!

**FRESH COWS** **EVERY WEDNESDAY IS DAIRY DAY** **SPRINGERS**



**AT NEW HOLLAND SALES STABLES, INC.**  
New Holland, PA

If you need 1 cow or a truck load, we have from 100 to 200 cows to sell every week at your price. Mostly fresh and close springing holsteins. Cows from local farmers and our regular ship pers include Marvin Eshleman, Glenn Fite, Kelly Bowser, Bill Lang, Blain Hoffer, Dale Hostetter, H. D. Matz, and Jerry Miller.


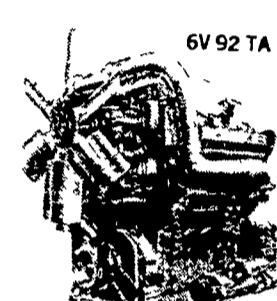
**SALE STARTS - 12:00 SHARP**  
Also Every Wednesday,  
Hay, Straw & Ear Corn Sale - 12:00 Noon  
All Dairy & Heifers must be eligible for Pennsylvania Health Charts.

For arrangements for special sales or herd dispersals at our barn or on your farm, contact  
Abram Diffenbach, Mgr.  
717-354-4341  
OR  
Norman Kolb  
717-397-5538

**HEIFERS** **BULLS**

**DANIEL'S ENGINE CONTROL**

**MWM murphy** Detroit Diesel Engine

Two Cylinder Model D 3272 20 to 36.5 HP Max

New Murphy Diesels  
1 - Thru 6 cylinder  
6 thru 112 HP  
air or water cooled

Used & Rebuilt Detroit Diesels • Engines & Power Units • Specializing in GM & Detroit Diesel, Tune-Up & Rebuilding

★ Twin-Disc Clutches Available ★

**DANIEL E. STAUFFER**  
R.D. 3, Ephrata, Pa. 17522  
Rt. 322, Hinkletown  
Ph: 717-733-3890

**The Silo-Matic RING UNLOADER** for STRENGTH and STABILITY

The RING that has ALL 3

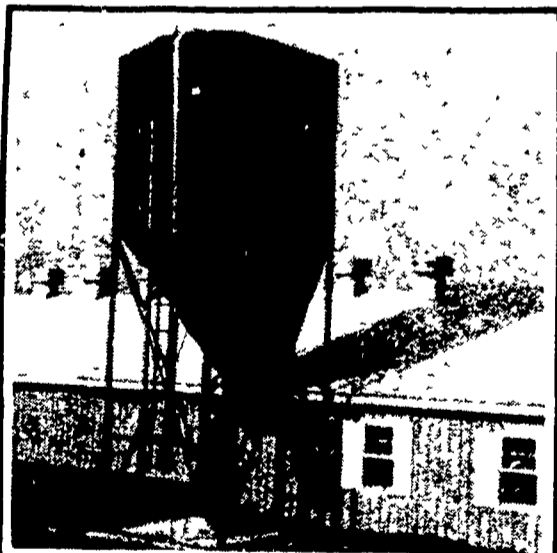
- 1 Ring Support
- 2 Collector Arm Support
- 3 Rotational Drive

- Even Slope Level
- Heavy Wall Chamber
- Under-Discharge
- Higher Capacity

Hosted for filling, insert shows 20 foot Titan\* Ring Unloader with 18 inch clearance above silo wall - 12 inches more clearance with 224 B Silo-Matic Ring

**Silo-Matic TRAVELING BELT FEEDER**  
FAST HIGH VOLUME CATTLE FEEDING WITHOUT SEPARATION

**FICKES SILO COMPANY, INC.**  
Box 7, Newville, PENNA. 17241  
PH. 717-776-3129



## CUSTOM MADE FEED BINS

- Made of 14 Gauge Steel
- Longer Taper for Easier Flow
- All welded seams which make it water proof and rodent proof
- Can be installed inside or outside building
- Most installations can be made without auger

WILL DELIVER AND INSTALL ANYWHERE  
FOR FREE ESTIMATE CALL

## BETZ'S WELDING SERVICE

717-345-4854  
Home: 717-345-3212

We Sell, Service & Install  
Bucket Elevators, Grain Augers, M-C Grain Dryers, Distributors, Pipes & Accessories.



**MOEWS SEED COMPANY**  
Box 214, Granville, Ill. 61326  
Phone 815/339-2201

Not only have lots of Waxy-Maiz Hybrid Seed Corn available for the A.E. Staley Company Contracts, Grain Farmers and the Livestock Farmers, we also have a complete line of Yellow Dent Hybrid Seed Corn.

We carry a complete line of Field Seeds. 3 alfalfa varieties, 3 clovers, Brome Grass, Orchard Grass, Maiz-Tim Timothy, Pasture Mix: Mix 10 and Mix 30, 6-Sorghum, Maiz Grain - Sorghum Sudan Grass, and Maiz-Chop-T a semi-sweet forage sorghum.

Please Feel Free to Contact our Dealers Anytime:

**D. RICHARD SNYDER**  
Rt #1, Montoursville, PA 17754  
717-433-3580

OR

**GENE HAAS**


District Sales Supervisor  
4911 Bradley-Brownlee Rd.  
Farmdale, Ohio 44417  
Phone 216/637-0749 or 638-5023  
Dealer Inquiries Welcomed

## ELECTRIC GENERATOR SYSTEMS

- DAIRY FARMS • POULTRY FARMS
- FARROWING HOUSES • CONTRACTORS • ETC

**DETROIT DIESEL UNIT**  
SIZES  
60 KW to 1050 KW

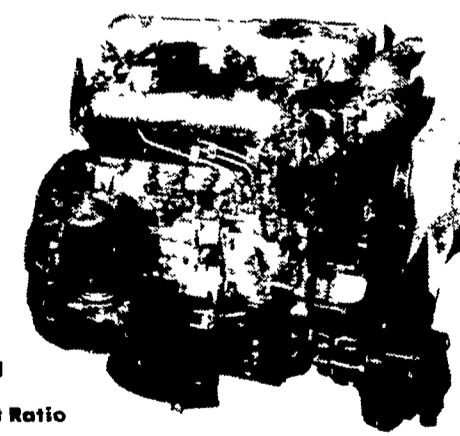
MANUAL OR AUTOMATIC



**ISUZU DIESEL ENGINES**

FOR AUTOMOTIVE AND INDUSTRIAL APPLICATIONS

SIZES  
10 KW to 60 KW  
18 HP to 211 HP  
• High Speed • Low Fuel Consumption  
• High Power to Weight Ratio



**AUTOMOTIVE ENGINES ARE EPA APPROVED**

**WE BUILD L.P. GAS GENERATOR SETS** **REBUILT GENERATOR SETS ON HAND**

**MARTIN ELECTRIC PLANTS**  
ISSAC W. MARTIN, OWNER  
PLEASANT VALLEY RD., RD 2 EPHRATA, PA (717) 733-7968

15 YEARS OF EXPERIENCE