

FARM EQUIPMENT

Wanted Scraper pan to rent to move top soil will pull with 140 hp tractor 301 877-7015

See page E36 for full listing of Construction Equipment Consignment Auction to be held March 19 Consignments Welcome Sale sight at **DENNIS M MILLER EQUIPMENT** Rt 22 Grantville, PA 717 838 1888 anytime 717 469 0937 daily

For Sale IH model 205 self propelled combine with cab and 13 grain head and pickup reel, like new 215 766 0479 evenings

For Sale Portable Englo air compressor, 8 hp engine good condition \$400, Berks Co 215 679 4210



FOR SALE
Leyland model 262 Demo 1978 w/300 hrs \$760J
Leyland tractor 344 57 pto hp. nice condition \$3500
Farmall M w/2M-HD IH mounted cornpicker \$1300
NI 270 71 conditioner, new \$1400, nice condition \$1400
Brillion Model STT01 10' transport harrow, excellent condition, \$950
JD drag type harrow, 9' nice cond \$285
JD KBA 28 blade 8 disc, harrow, nice cond \$600
Faylorway 6'4" heavy duty offset disc harrow, 24" blades, new condition \$1600
Case 11 ft 36 blade transport disc harrow \$975.
Badger manure spreader Model 205, 205 bu \$900
HEISEY FARM EQUIPMENT, INC.
RD 1 Jonestown, PA 717-865-4526

FARM EQUIPMENT

See page E36 for full listing of Construction Equipment Consignment Auction to be held March 19 Consignments Welcome Sale sight at **DENNIS M MILLER EQUIPMENT** Rt 22 Grantville, PA 717 838 1888 anytime 717 469 0937 daily

For Sale 235 Hawk Bilt 2 ton trailer fertilizer spreader same as JD 602 \$2000 NI flail spreader with endgate \$450 Franklin Co 717 597 9559

1968 industrial model 680 Case loader tractor good condition \$5900 717 869 2116

For Sale JD model 55 self propelled combine with 14 grain head, good condition \$3 950 215 766 0479 evenings

FARM EQUIPMENT

For Sale IH 110 forage box IH 61 forage box 8 x 8 x 16 bale wagon Killbros model 350 gravity bin 717 865 3155

For Sale JD 3 pt hitch 3 bottom standard trip 14 plow, good cond., \$350 717 687 8549

For Sale MF 510 diesel combine, QT 13 plat form, 4 30 corn head, cab straw spreader Reason quitting farming 814 237 6080

For Sale 3 holding tanks used for holding water in apple orchard, \$200 each or all three for \$500 Berks Co 215 679 4210

For Sale JD 16 transport disc harrow Oliver 14 transport disc harrow both in excellent condition 215 766 0479 evenings

TRACTOR & MOTOR REPAIRS

Over 20 years experience with Ford tractors and equipment. Shop & Road Service Pickup and Delivery

WALT STIVELY, JR.
Springville Road Quarryville, RD3 Phone: 717-786-2252



1975 1370 Case Tractor, nice cond

(2) New Idea 213 Manure Spreaders in Excellent "like new" Condition

New Idea 214 Manure Spreader in A-1 Condition

Plus other size spreaders in stock at Good Prices

C. & P. FULTZ EQUIPMENT

RD 1 Spring Mills, PA (814) 422-8807, Ask for Paul

FARM EQUIPMENT

For Sale 8N Ford with plows and pulley, good shape \$1800 717 928 8346

JD 4430 with 2 post roll guard very good condition also 3020 diesel, narrow front, good condition 717 532 7054

1972 INC 2500A (574) Tractor, 2300 hrs 3 pt hitch, dual PTO 2050 loader, WF PS roll cage wheel weights, etc York Co 717 456 7309 after 6 P.M

Int 1066 cab & duals Int 205 combine both heads, rollbar 4 post 1066 M & M motor for parts 4 1/4 bore 801 Ford 4 wheel drive & winch for woodwork Ph 814 672 8196

For Sale JD 2010 45 hp 3 pt live PTO & hydraulics, power steering new paint well cared for, original owner 717 334 2760

Wanted WK40 tractor P40 & U21 IHC power unit for parts W12 pulley & owners manual Ben J Kinsinger RD 1, Box 234A, Meyersdale Pa 15552

FOR SALE JOHN DEERE 6620 SIDEHILL COMBINE
w/corn head & low hrs. 717-648-9860

PUMP PROFITS
Into your bank account with an electric Turbine

IRRIGATION PUMP
300 GPM \$2500

EECO, INC.
Harrisburg, PA 17110 717-238-9423

FARM EQUIPMENT

Wanted Used (in good shape) 2 55x16 implem tires (for JD B) 16 3 bottom mounted plows, Call 717 567 6790 eves

Cornell model SHL electric auto slab wood cut off saw \$8000 or best offer, 301 848 7211

For Sale Ag gator model 1004 row crop liquid applicator 1000 gal SS tank and 50 ft hydraulic booms, also Dodge 220 diesel truck with John Blue fertilizer and wet lime spreader also NH model 495 12 ft haybine, 717 788 2865

JD 720 Gas Tractor w/WF good condition \$2400 301 795 9631

NH 325 Skid Loader needs motor NH 518 Spreader \$850 NH 469 Haybine \$1600 NH 479 Haybine \$2500 Hesston 310 SP Mower Conditioner \$1000 **WENTZ FARM SUPPLY** Palm, Pa 215-679-7164

John Deere B Tractor w/ JD 40 Loader and 2 Btm plow 301-452 5252

1973 Ford 750 cab over 391 engine live speed w/two speed rear 26 ft Jerry Dan Rollback clean \$8 500 00 Call 717 632 2345

Glenco field cultivator used 1 yr 717 442 8340

JD 237 Corn Picker with elevator and #50 sheller unit universal mounts, good condition 301 829 2042 or 829 0768

TRENCHERS

New rubber tire model 9 hp digs 6 wide x 24" deep \$800

Used track model 12 hp digs 4 1/2 wide to 5 deep \$1900

EECO, INC.
4021 N 6th St. Harrisburg, Pa. 17110 717-238-9423

FARM EQUIPMENT

For Sale Ferguson tractor model 30 excellent condition must be seen to appreciate, asking \$1795 717 345 8750 after 6 p.m

IH 706 gas, tires 75%, good condition, Oliver 74H two row mounted corn picker, will sell together or separate, **Lycoming Co** 717 547-1789

All New 3 pt Equipment 5 rotary mowers \$485, 6 blades \$195, disc harrows \$390, post hole diggers \$340, stone rakes \$365, 1 bottom plows \$215, ground scoops \$230 **KEENER EQUIPMENT CO** Intersection of Rts 72 and 283, Lancaster, Pa 17601, Phone 717 569 9861

1977 Case 580 C backhoe loader, full enclosed cab extendahoe 875 hrs., excellent shape, 607 295 7333

For Sale NH 510 manure spreader, nice condition NI 217 manure spreader, AC 5 bottom 3 pt plow, AC 2 bottom rollover plow AC 15' foldup disc, AC 4 row mounted cultivator 1969 Ford 100, 360 engine, engine in good shape body needs work 215 536 5011

1979 Ford 7700 600 hrs dual power load monitor weights front and rear, like new **Lycoming Co** 717 547 1789

Wanted AC KL 330 corn header for mounting on KKS combine Meckley's Garage, 717 758 3915

NEW BACKHOE/LOADERS

At Used Prices
IH 250A, 14', \$19,000
IH 260A, 14', \$21,500

HICKORY INTERNATIONAL INC.
Bel Air, MD 301-838-4200

FARM EQUIPMENT

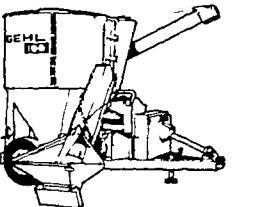
For Sale Myers row crop potato sprayer, 500 gal tank, good condition, Hersey 1 row transplanter, water tank, 3 pt hitch, used 1 yr., 2 reverse Tew flow table, 2 Tew double head baggers, Tew L bolt Trescott model TC bag closer, 215 837 0847

For Sale JD 7000 Max Emerge Planter 6 30" rows, insecticide Quik fill dry fert Monitor, \$6800, 215 267 5012

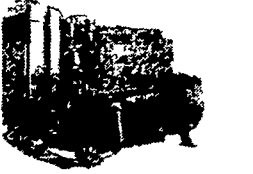
Wanted Quik Fill dry fert attachment and hydraulic markers for JD 7000 6 row planter, 215 267 5012

For Sale IHC 12 vibra harrow, very good condition, 717 247 7858

2020 JD diesel with loader and new rubber, \$4150 717 733 0948 call between 5 30 8 mornings and evenings only



Gehl MX 100
New, Fully Equipped
1 Only
\$5575



Perkins Diesel
Used 6-354 111 H.P.
with clutch,
like new

New
• Farm Bilt Wagons
• VM Diesels
• Triple Gang Lawn Mowers
ZOOK ENGINES
R2 Box 222A
Honey Brook, Pa 19344
Answ Service
215-273-2943



USED EQUIPMENT
Allis Chalmers CA Tractor
IH F-1066 Tractor
Farmall Super C with Loader
MH 33 Tractor
MF 135 Tractor
MF 1105 Tractor

NEW EQUIPMENT
MF 205 Tractor
MF 245 Tractor
MF 285 Tractor
MF 275 Tractor
MF 30B Tractor
Loader
MF 1050 Grinder
Mixer
MF 750 Combine
NI Manure
Spreaders
Caldwell Shredder
Bearcat For Harvester

OPEN HOUSE IS HERE!
MARCH 5 & 6
• See Page A-27

N.H. FLICKER & SONS, INC.
Box 68
Maxatawny, PA 19538
215-683-7252

VAN DALE & STARLINE SILO UNLOADERS SALES & SERVICE
2008 Horseshoe Road - 2436 Creek Hill Road LANCASTER, PA 17601

LANCASTER SILO CO., INC. "LANCASTER" CONVEYORS TAPER BOARD FEEDERS BELT FEEDERS

MANUFACTURER & BUILDER OF QUALITY WET-CAST CONCRETE STAVE FARM SILOS



Lancaster Silo Co. Can Save You Dollars on 1981 Silo Orders:

Check Our Quality Items Available On All Lancaster Concrete Stave Farm Silos

Corrugated 3" Wet-Cast Staves
Hi-Strength 9/16" Dichromate Rods
Aluminized Steel Roof & Dormers
Stave Or Aluminized Steel Chute
Smooth, Heavy Coat Interior Plaster

FOR COMPLETE INFORMATION, CALL:
Larry Hiestand - Office - 717 — 299-3721
Wayne Lloyd - Sales - 717 — 299-3722

TIME TO FIX & REPAIR
10% CASH DISCOUNT ON ALL HARDWARE & PARTS ITEMS ON DISPLAY w/PURCHASE OF \$75.00 OR MORE
SOME DISPLAY ITEMS INCLUDED

STARLINE PARTS
VAN DALE PARTS
RITCHIE CATTLE & HOG WATERERS
ROLLER MILLS
PROTEIN METERS
KLEEN CHUTE KIT

ROUND HAY RACKS
PIPE FITTINGS
PULLEYS-SPROCKETS
BEARINGS-BELTS
TOOL DISPLAY
SILAGE CARTS
FEED CARTS
WBZ HORSE FEED ADDITIVE

VAN DALE "MAGNUM" SILO UNLOADER
A SUPER CAPACITY HAYLAGE UNIT.
BE READY FOR SPRING
NEW - REBUILT - WILL TRADE!

USED SILO SPECIAL —

12x65 LANCASTER SILO w/ STARLINE UNLOADER -

10x50 FICKES SILO -

22x70 FICKES SILO w/ SILO-MATIC UNLOADER —

24x40 LANCASTER SILO

WE SELL - WE TRADE ALSO

SAVE ON "LANCASTER" Brand Equipment

"NEW" "NEW" "NEW"

SINGLE OR DOUBLE WATERERS

FOR: CALF - HEIFER - COW HORSE - SHEEP - HOG

All Units Have Nylon Valve, and Adjustable Float to assure proper water level.
NON-HEAT UNITS:

SINGLE \$22⁵⁰ DOUBLE \$25⁰⁰
11"Wx18"Lx6"H 11"Wx28"Lx6"H



ROUND HAY RACKS - 2 PIECE
18 Openings - Can use for regular or Large Bale \$170.00