

Farm Equipment Expo to open



Dignitaries and state officials have the honor of cutting the Farm Equipment Expo ribbon to open the doors of the Farm Show Complex for three days of livestock, machinery, and pulling contests measuring two kinds of horse power. The Expo Main Floor

opens at 8 a.m. Thursday, March 5 and Friday, March 6 and closes at 8 p.m. on both days. Saturday's hours are from 8 a.m. to 6 p.m. Evening attractions in the large arena start at 7 p.m.

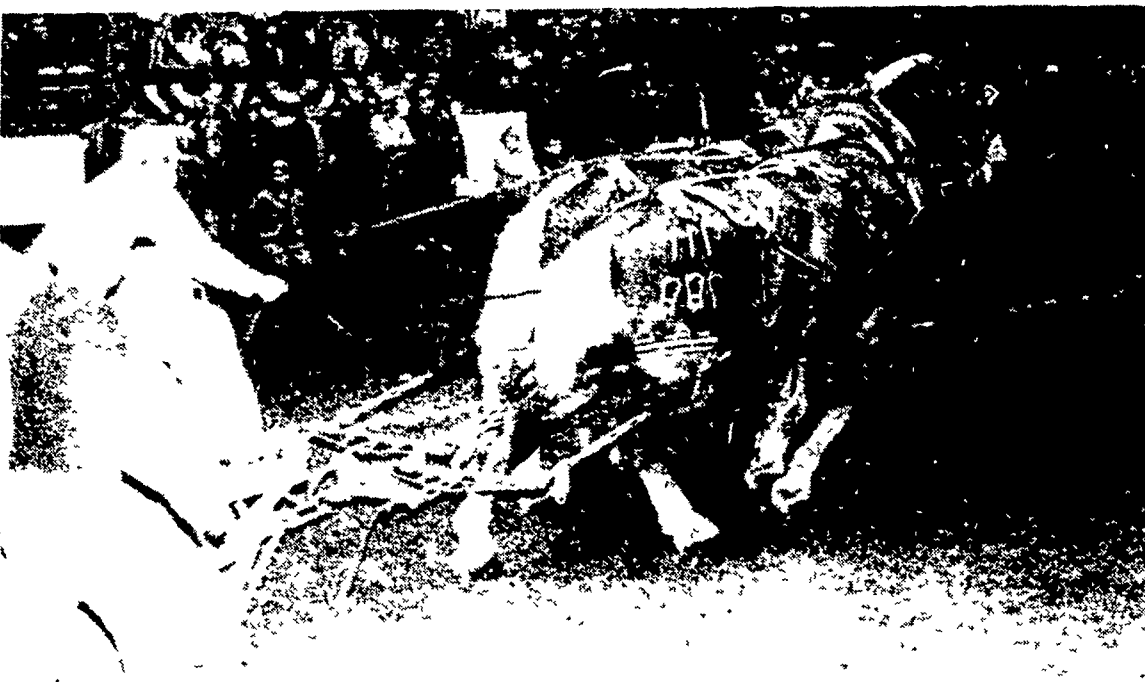


Kids of all sizes enjoyed the 1980 Expo Chicken. Here, Deputy Secretary of Agriculture Chet Heim discusses the poultry industry potential with his feathered friend.



The 2nd Keystone Classic Swine Show and Sale will pit breed against breed for grand championship honors in both bred and open gilts and boars. Last year's top selling animal was the grand champion open gilt, exhibited by

Leon Arnold, left, of Lebanon. Pictured with Arnold are Kenlin and Marlin Martin, buyers, and Dennis Grumbine, president of the Pa. Swine Producers Cooperative.



With muscles bulging and harness straining against a 9200 pound stone load, a team of Belgians pulled off the championship at last year's Expo competition. The winning team

was owned by Max Ledyard of Waldron, Michigan. This exciting event will be held this year on Saturday, March 7.



The Young Farmers will be spiking it out for the championship in the Expo's volleyball tourney. The teams will serve up a lot of exciting competition starting at 11 a.m. Saturday in the Farm Show Complex large arena as the Ephrata team attempts to hold on to the championship title.

PENNSYLVANIA AGRICULTURE



WE'RE GROWING BETTER