

## Public Sales Register

Closing Date - Monday, 5 00 P M  
of each week's publication

SAT MAR 14 2 00 P M Public Sale of 1 Story Home Located along Rt 625, close to Centre Church, midway between Rowmansville and Terre Hill, Lancaster Co Marvin Good Exec for Elizabeth Good Estate Leroy S Horst and Paul W Horst Auctioneers

SAT MAR 14 @ 10 A M Farm Machinery & Dairy Equip Located 1 mile north of Rt 254 at Limestoneville, which is between Milton & Washingtonville, Pa Mon tour Co Watch for sale signs, Terms by Titus & Susanna Snader Elton & Alvin Horning Auctioneers HORNING FARM AGENCY INC

SAT MARCH 14 9 30 A M Public Auction of General Farm Equipment Vegetable Growing Equipment Irrigation System, and Household Items located 5 miles North of Shippensburg off Rt 696 between Shippensburg and Newburg Cumberland Co Watch for Auction Arrows Terms by Paul L Nuschke John B Niesley Realtor Auctioneer

SAT MAR 14 9 00 A M Public Sale of Farm Equipment and Household Goods Located Rt 645 north of Myerstown PA

Henry Brubaker owner Sylvan Witmer Auctioneer

SAT MAR 14 Public Sale of Household Goods and Antiques Located at 973 Rettew Mill Road, Ephrata PA Howard J Kreider, Owner John E & Paul E Martin Auctioneers

SAT MAR 14 Blain Perry Co PA Complete line of farm machinery including 5 tractors household goods and misc items Blain Perry Co PA George Ruoss Owner Sale by Kling s Auction service

SAT MAR 14 10 00 A M Public Sale of Farm Machinery, Located in Catawissa Rd 2 off Rt 42 south of Bloomsburg to Mt Zion Rd turn at Three Points or off Danville Elysburg Rt 54 turn left at Cherokee Golf Course Mr & Mrs Raymond Dailey - Owners John Autotore and John Jr Auctioneers

SAT MAR 14 10 00 A M Public Auction of Farm Machinery and Misc Household Goods Located in Centre Co PA 4 miles west of Old Fort Centre Hall or 4 miles east of Boalsburg Rt 45 on Rimmey Rd 2nd farm Edgar and Elizabeth Rimey Owners Carpers

### Auctioneers

SAT MARCH 14 10 00 A M Public Sale of Valuable 4 Acre Farm 58 Acre Farm 8 Acre Clear Land and 2 1/2 Story Frame House Town Farm Equip Butcher Equip Household Goods Tools and Antiques Located 2 miles east of Rt 443 in Pine Grove PA John Stattizahn Estate Robert A Arner Auctioneer

SAT MAR 14 Inventory Reduction Sale by Finger Lakes Tractor Penn Van NY Sale by Goodrich Auction Service

SAT MAR 14 10 30 A M Spring Horse Sale Held at Jersey Shore Livestock Barn Jersey Shore, PA Barn in 2 miles east of Jersey Shore on Rt 44 For information call Lynn Boves 717 398 2194

SAT MARCH 14 10 A M Public Auction of Valuable Farm Equipment Hay and Straw located just south of Bainbridge Pa Take Wickersham Road East from Rt 441 first lane right after passing Arnold s Weld Shop Sale by A and R Nissley Inc E M Murry Assoc Auctioneers

SAT MAR 14 9 30 A M Public Sale of Tractors and Modern Farm Equipment and Trucks, Located 4 miles east of Rt 147 along Bole Run Rd in Lower Augusta Twp Northumberland Co PA 9 miles south of Sunbury 3 miles north of Herndon Oak Ridge Farms Owners George and Mike Deibert Auctioneers and Realtor

9 30 A M Public Auction 7th Annual Farm Machinery & Equipment Sale Located at Elms near auction barn Vincentown NJ Richard P Allen Auctioneer

SAT MAR 14 10 00 A M Public Sale of Tractors Trailers Trucks Potomac Horse Center 14000 DuFriet Mill Rd Gaithersburg MD

SAT MAR 14 9 A M PA Landrace Assn spring

State Show and Sale Held at the Lebanon Co Fairgrounds intersection of Cornwall and Evergreen Roads

SAT MAR 14 10 00 A M Public Sale of Farm Machinery Cattle and Dairy Farm Located along Littlestown (Rt 97) Rd 3 1/2 miles north of Westminster MD and 9 miles south of Littlestown PA in Carroll Co MD Clarence & Rhea Trout Owners Trout Auctioneers Inc

## PUBLIC SALE

FRIDAY, MARCH 6, 1981

10:30 A.M.

Located 1 1/2 miles north of Route 340 from the Bird-in-Hand Motor Inn & Restaurant. 1 mile south of Monterey along the Monterey Rd., Lancaster Co., Pa.

### LIVESTOCK

50 head of Holstein dairy cattle 39 head of Holstein dairy cows in all stages of production 5 due to freshen in next month 10 heifers from 3 mos to 1 year old. 1 small bull.

2 pr sorrel mules, well broke

### FARM EQUIPMENT

NH #268 baler with diesel engine; New Idea #323 1-row corn picker, New Idea #206 manure spreader, McD corn binder with loader, Husky fast-feed corn sheller,

Oliver two bottom 12' plow, Oliver single bottom 14' plow, McD #9 7' trailer-gear grass mower, NH elevator, wheel type side rake, 2 flat-bed wagons, 1 with springs,

Mechanical transplanter, McD two row corn planter, John Deere 20 KBA disc harrow, John Deere 3-section spring harrow, 2 John Deere riding cultivators, double cultipacker, gravity bin on running gears,

Two fore-trucks, platform scales, Minnich tobacco press, bag wagon, log chains, front gears, collars, 1, 2, 3, 4, 5, and 6 horse hitches,

Dairying Equipment, Mojonner 600 gallon bulk tank, Lombardim 20 hp diesel with 1050 hours, 3-Delaval milking units, 300 pound portable Sputnik, Boumatic 4 or six unit pump, Lehigh 3 hp compressor, stainless steel tubs and strainer, pail rack, electric tencer, Sale at 10:30 A.M.

Owners

**BENJ. S. & LIZZIE E. GLICK**

Diffenbach's Auctioneers

Lunch available.

## DAIRY & MACHINERY SALE

TUESDAY, MARCH 3, 1981

10:30 A.M.

The undersigned, located 2 1/2 miles N.E. of Landisburg, Perry Co., Pa., 12 miles North of Carlisle on Rt. 74, will sell the following:

### DAIRY HERD

60 Head Holsteins 60

Several Registered Cows & First-calf Heifers Approx. 1/2 just recently fresh or close springers. Balance in all stages of lactation. Some bred for Base Milk A Good Young Dairy - Producing Well.

"There is something for everybody in this sale!"

Health Charts - Bar 4 Shots - Preg. Checked

### FARM MACHINERY

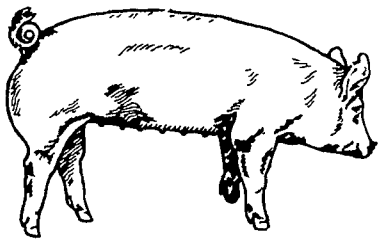
I.H. 311 Fast-hitch 3-bottom Plow; J.D. 24T Baler with Kicker; N.H. 460 Haybine; N.H. 56 Rake; 2 Bale Rack Wagon; N.H. Ground-Drive Manure Spreader; I.H. 2-row Trail Corn Planter (Plastic Fertilizer Boxes); Onterio 14 Disc Drill; Dunham Loader with hydraulic Bucket; Kingwise 30 Ft. Elevator; J.D. 3-section Lever Harrow; Farmall Cub Tractor - Yellow & White Paint; Quick-hitch Plow & Cultivators; 4 ft Sickle Bar Mower for Cub & harrow; ft. End Angle Blade for Cub; N.H. 6 T wagon with flat; I.H. 7 ft Mower; 460 I H Tractor, Fast hitch, P S. T.A ; 3 Surge Milker Units with Rebuilt Pulsators; Dumping Station with Lane Dryer; Wagon Running Gears; 3-pt Oliver 3-bottom Plow; J.D. #5 Mower Conv. to 3-pt. Side Delivery Rake; S.C Case Tractor with 3-pt. Hitch; 7 Ft. Case Mower - 3pt ; 2-Cultivators- 3 pt.; 2-3 pt. Scraper Blades; Badger Stock Waterer (new); 30 Sawed Locust Posts; DeLaval #73 Milker Pump; M.F #50 Tractor, Sauder Loader; N H Flail Chopper.

Order of Sale Machinery, Cattle at Noon Lunch Stand Catalogs on Cattle

**V. ART KLING**, Owner  
Landisburg, Pa.  
717-789-3883

Mark Glick & Mark Keller, Auctioneers  
Fred Naugle, Pedigrees

## THANKS FOR HELPING TO MAKE OUR 7TH PRODUCTION SALE A SUCCESS



**TOP SELLING BRED GILT** - Yorkshire at \$400 to Raymond Townsend, Jr., Frankford, DE. Bred gilt average \$248.59.

**TOP SELLING BOAR SPOT AT \$330** - to Glenn Dietrich, Kempton, Pa. Boar average \$273.13.

**TOP SELLING OPEN GILT SPOT AT \$195** - to Glenn Dietrich, Kempton, Pa. Open gilt average \$141.18.

**VOLUME BUYER** - 12 head to Glenn Dietrich, Kempton, Pa.

### DOOR PRIZE WINNERS:

Open Gilt - Gordon Long, Columbia, Pa.  
Flower Arrangements - Greenfalls Farm, Ashway, RI & Ken Fetterolf, Centre Hall, Pa.

### SELLING PIGS TO 6 STATES BREEDING STOCK FOR SALE AT ALL TIMES

WATCH FOR OUR  
ENTRIES AT THE  
KEYSTONE CLASSIC  
MARCH 6 & 7  
& the  
YORKSHIRE  
INVITATIONAL  
MARCH 21

NEXT PRODUCTION  
SALE MARCH 28  
1:00 P.M.  
AT OUR FARM  
70-75 BRED GILTS  
40 OPEN GILTS  
30 BOARS  
trv #18, Brucellosis #26

## CALVIN H. LAZARUS & SONS

Duroc, Yorkshire & Spotted  
4290 Bridge St., Whitehall, Pa. 18052  
Lehigh Co.  
215-799-3375

## CONSIGNMENT AUCTION

OF FARM EQUIPMENT, TOOLS & OTHER

FARM RELATED ITEMS

MONDAY, MARCH 9

9 A.M.

Location - At auction barn American Corner, MD on Hwy. 621 between Denton & Federalsburg, MD.

Small Items - 9 A.M.

Equipment - 10:30 A.M.

If you have equipment for auction phone 301-479-0756 for information Items received Fri., March 6, Sat., March 7 up until sale time Monday

Terms of Sale - Cash or approved check

A. Curtin Andrew Auction, Inc.

Auctioneers

## PUBLIC SALE

OF FARM EQUIPMENT, PICKUP, CROPS,  
HOUSEHOLD GOODS, FEW ANTIQUES

FRIDAY, MARCH 6, 1981

11:00 A.M.

One mile east of Fleetwood, take Oak Haven Rd. north to Mertz Rd. turn right to first farm on left. Richmond Twp., Berks Co., Pa. Watch for yellow sale signs.

JOHN DEERE 2640 DIESEL tractor, 760 hrs, with 540 and 1000 R P M P.T.O., Front End Weights; JOHN DEERE 1020 DIESEL Tractor, 2400 hrs, Live P.T.O., with J.D. 37 Hyd Dump Loader; FARMALL 300 Tractor with Rear Weights, KUBOTA L175 DIESEL Tractor 17 1/2 H P, 340 hrs, Catagory #1 3 pt, 540 - 1000 P.T.O., 5' 3 pt Mott Flail Type Mower, like new, 6' 3 pt Disc, like new, John Deere 3-16" Auto Reset Plow, 3 pt, John Deere 3-16" Trip Plow, 3 pt, John Deere 2-16" Trip Plow, 3 pt, John Deere 494 Corn Planter, International 37 10' Transport Disc, like new; New Holland 352 Grinder-Mixer, like new; New Holland 717 One Row Harvester, 9 Knives; New Holland P.T.O. 68 Hayliner Baler; New Holland Trailer Mower with Crimper Hitch; New Holland Crimper, new Holland 56B Rake; New Idea 323 One Row Cornpicker, used for 260 acres; Kools P.T.O. Table Blower

50' 9" Pipe, like new, International 8' Disc; 8' Brillion Cultipacker; 3 - Flatbed Wagons 2-14'; 1 - 16' two with False Ends; Two Wheel Trailer; John Deere 43 P.T.O. Portable Corn Sheller, like new; New Idea 10 Corn Picker; International 16 Disc Grain Drill; Case 125 P.T.O. Triple Beater Manure Spreader, Bear Cat P.T.O. Portable Hammermill, Little Giant Corn Drag, 24' Smoker Elevator, 5'x16' Grain Auger, 2 Row 3 pt Cultivator, Massey Harris 7' P.T.O. Clipper Combine, 10 Hole Pride-of-Farm Hog Self Feeder, like new, 10 Hole Hog Self Feeder, Small Farm Trailer; Two Row Transplanter; Shovel Harrow; 4-Section Spike Harrow; 1 - Ton 7-28-28 Fertilizer, Clipper Seed Cleaner; 275 gal Fuel Tank, Galvanized Water Trough, False End Gate Unloading Unit; 500 lb Platform Scale; 40' Ext Ladder; David Bradley Garden Tractor; 225 amp. Lincoln Welder, like new; Baler Twine, 2 - Hyd. Cylinders; 3 pt Weights; Wheelbarrow; Bag Wagon, Roof Ladder; Firewood; Electric Feeder; 2 - New J.D. 16" Mold Boards; 1/2" Socket Set; 90 gal White Oil Base Paint; 50 gal Black Roof Coating; Saw Buck; few Misc Hand Tools

1000 BALES OF WHEAT - OATS STRAW; 400 BU. OATS WALNUT AND WILD CHERRY FURNITURE LUMBER

### TRUCK - CAR

1973 FORD F100 PICKUP, 6 Cyl, Straight Shift, 73,000 miles, with cattle racks and camper 1964 CHEVY IMPALA 4 door sedan, 283 engine, 70,000 actual miles

### HOUSEHOLD GOODS - ANTIQUES

Warm Morning Coal Stove, like new; Monarch Full Size Kitchen Coal Range, good condition; Cedar Wardrobe, like new; Recliner; Allens Wood and Coal Stove; Butcher furnace, good condition, Twin Tub; Antique Wood Chest, Oak Buffet with Carvings, very nice, 2 - Washstands, one with Towel Rack; Blank Chest with Shelf, Oak Parlor Stand

SALE ORDER Tools, Household Goods, Equipment, Crops

NOTE: Come early, not many small tools

Reason for sale due to poor health

Sale for

**JOHN W. & LILLIAN SAUDER**

215-683-7802

Aucts

Nevin Z. Martin, Lewis B. Groff

Lunch Served

Not Responsible for Accidents

No Out of state Checks