

York-Adams Pomona lists winners

Lancaster Farming, Saturday, February 28, 1981—C33

BIGLERVILLE — Biglerville Grange 2063 was host to the February session of the York-Adams Pomona Grange 40, last Saturday

Winners in the Cherry-pie baking contest, sponsored by the Women's Activity, were first, Janet Nace; second, Dorothy Reichart, both of

Gideon Grange 2010 Third, Mary McDannal, Biglerville Grange

The York-Adams Pomona Grange will again be selling tickets for a stage play to be held at Allenbury Playhouse in late Summer Those appointed to the Committee to choose play and date were Anna May Snyder, Donald

Jamison and Kenneth Wolfe.

The Lecturer, Gladys Sheffer, had as the program during the afternoon, readings, quizzes and puzzles. The program opened with the Chaplain Janet Nace reading from the First Book of John in the Bible All joined in singing "Jesus, Saviour Pilot Me"

A reading, "Happy New Year", taken from an Almanac of the 1960's was read by the Lecturer

Winners in the quiz contest of famous quotes were Peggy Jamison, Robert Boyce, Marion Boyce, Steve Boyce, Gred Reigle, William Reichart, Luther Snyder and Joyce Snyder The program

closed with a reading, "We've Always Been provided For"

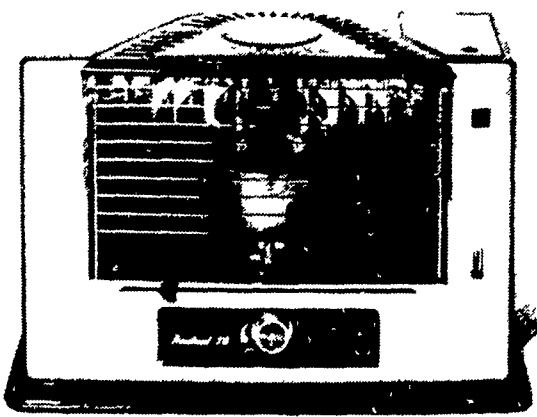
Following a covered-dish evening meal, Naomi Bupp won the cake-walk. The evenings Lecturer's program was a slide presentation of trips taken by Mr. and Mrs J Franklin Sheffer, during the past years.



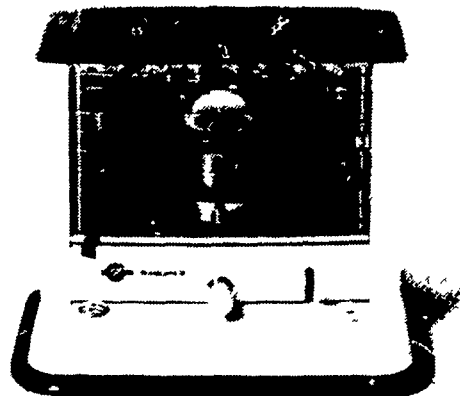
END OF SEASON CLEARANCE SALE

Buy Now And
SAVE \$ \$

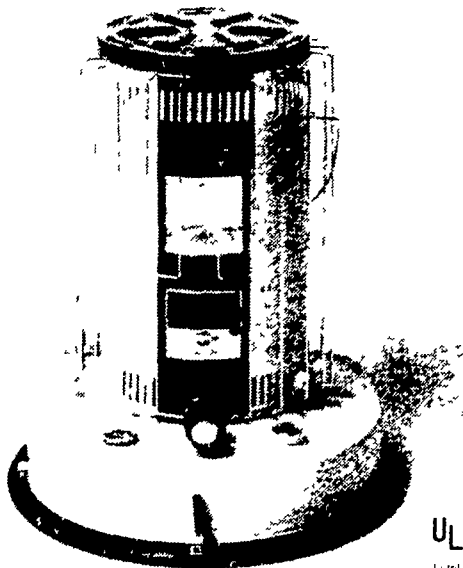
Sale Ends March 15th
While Supply Lasts



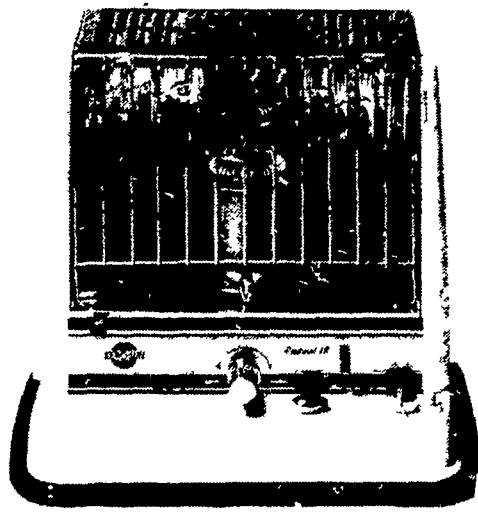
Radiant 36, Rated at 9600 BTUs (2400 kcals) per hour Offers sleek designer styling and a removable fuel canister for extra easy filling Operates from 18 to 25 hours on 13 gals (49 liters) kerosene 17 1/4" (43.7 cm) high 25 1/4" (65.4 cm) wide 12 1/4" (31.0 cm) deep 25.3 lbs (115 kg)



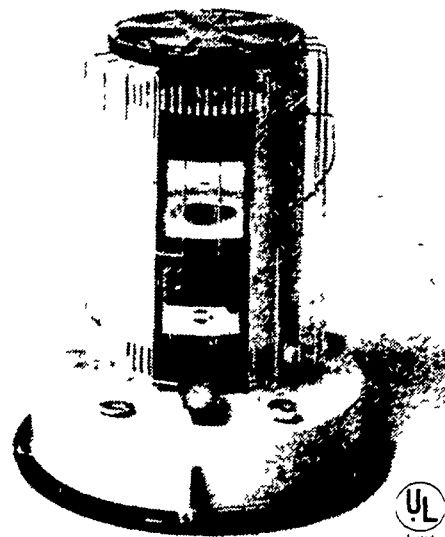
Radiant 8, Rated at 8200 BTUs (2050 kcals) per hour The most compact most economical Kero Sun radiant model Great for smaller heating jobs Operates from 28 to 39 hours on 17 gals (64 liters) kerosene 17 1/4" (43.6 cm) high 20 3/4" (52.8 cm) wide 13 1/2" (34.2 cm) deep 21 lbs (9.6 kg) UL Listed



Omni 105, Rated at 19500 BTUs (4900 kcals) per hour for biggest heating jobs—cold basements garages adjoining rooms warehouses barns construction sites Operates up to 18 hours on 199 gals (75 liters) kerosene 22" (55.9 cm) high 18 1/2" (47.4 cm) base 26.4 lbs (12.0 kg) UL Listed



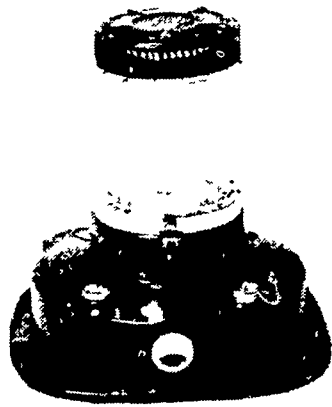
Radiant 10, Rated at 9600 BTUs (2400 kcals) per hour Most popular radiant kerosene heater in America Clean modern look fits any decor Operates from 27 to 37 hours on 192 gals (73 liters) kerosene 19 1/2" (48.5 cm) high 21" (53.2 cm) wide 15 1/2" (38.7 cm) deep 24.6 lbs (11.2 kg) UL Listed



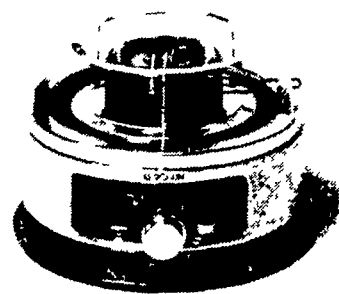
Omni 85, Rated at 13100 BTUs (3300 kcals) per hour Gives you a perfect balance of high heating output plus long burning time for any application from a large living room to a garage Operates up to 28 hours on 199 gals (75 liters) kerosene 20 1/2" (52.1 cm) high 17 1/2" (44.2 cm) base 22 lbs (10.0 kg) UL Listed



Omni 15 Rated at 8700 BTUs (2200 kcals) per hour Smallest lowest priced Kero Sun is extra tough for camping hunting or around the house Offers cooking surface Operates up to 36 hours on 17 gals (64 liters) kerosene 18 1/2" (46.0 cm) high 16 1/2" (41.2 cm) base 14 1/2 lbs (6.4 kg) UL Listed



Moonlighter Most versatile heater gives heat and light plus cooking surface Rated at 8700 BTUs (2200 kcals) per hour Goes anywhere Tin oxide coating on glass mantle creates pretty prism effect Cookrail heat reflector and storage cover accessories available Operates up to 36 hours on 17 gals (64 liters) kerosene 16 1/2" (43.0 cm) high 16 1/2" (41.2 cm) base 14 1/2 lbs (6.4 kg) UL Listed



Model K, Stainless steel cook stove for camping emergencies boats canning Great for fondue and wok cooking Rated at 7600 BTUs (1900 kcals) per hour Operates up to 14 hours on 057 gals (022 liters) kerosene 9 1/2" (24.4 cm) high 14 1/2" (35.8 cm) base 13.4 lbs (6.1 kg) Cookrail accessory

BOWMAN'S STOVE SHOP

R D 3, Napierville Road, Ephrata, PA 17522
Follow Signs From The Light At Hinkletown
Tues., Wed., Sat 9-5; Fri 9-9,
Mon Appointment Only



717-733-4973
Financing Available

IN STOCK: Chimney Brushes
Ceiling Registers, Insulated
Chimney and A Wide Variety of
Coal and Woodburning Stoves



GIGANTIC SELECTION
in
Lancaster Farming's
CLASSIFIEDS

Investigate before investing

UNIVERSITY PARK — Tired of fighting urban traffic, concerned about the quality of city life, or considering retiring to a farm? These and other reasons are given by people ready to give up city or suburban life and move to a farm. Other reasons are economic - a tax shelter or a good land investment

Whatever the reasons, investigate this option fully before the dream becomes reality. Penn State offers a comprehensive course on Farm Management for Part-Time Farmers, designed for those considering part-time farming operations, either while they have outside employment or for those who want to do limited farming.

This correspondence course discusses the advantages and disadvantages of 18 livestock and 18 crop enterprises and includes lessons on record keeping, tax considerations, budgeting, and insurance needs geared to the part-time farm business.

It covers the cost of establishing various enterprises, labor required to operate them, marketing problems and procedures, taxes, and other items that must be considered before a final decision can be made.

This ten-lesson course is one in a series of farm management courses from Penn State. Others include Farm Management, Pennsylvania Farmer's Account Book, and Farm Financial Management

These study-at-home courses are described in a catalog available from the Correspondence Course Office, Box 5000, University Park, PA 16802

To order a copy of Part-Time Farming, send your check for \$5.50 plus 50 cents postage to the above address. Make check payable to Penn State