

FARM EQUIPMENT

New E Z Trail farm wagons, wagon beds feed carts farm gates B John Stoltzfus Gap RD1 Pa 17527 Millwood Road

For Sale IH 56 corn planter A1 working condition 717 345 8588

For Sale 8 Bush Hog chisel plow Used only on 200 acres Excellent condition Salem Co Call Between 6 and 8 am 609 358 4781

FARM EQUIPMENT

Farmall 806 diesel, 3 pt dual valves cab dual wheels, also 2000 Int loader will sell separately Int 400 cylo 4 row no till planter with dry fert monitor & insecticide 224 JD baler with #2 thrower NH 467 haybine NH 56 rake, Oliver 64 grain drill Int 27 baler Danco metal bale body on running gear Badger manure pit pump & agitator 301 676 1681 or 836 1694 after 6 P M

FARM EQUIPMENT

For Sale
1 Schutte Hammer Mill Model #1020 40 H P Motor S Howe Co Inc (New)
1 Vertical Mixer V 70 #113491 Factory #38205 5 H P Motor with floor hopper S Howe Inc (New)
8 Bohn Temp & Humidifier Units (New)
Will be sold at 30% discount 609 786 1600

FARM EQUIPMENT

1980 MF model 184 4, 4 wheel drive tractor, 62 h p, Perkins diesel engine 12 speed syn cromesh trans, dual hyd cab 400 hrs like new condition \$17 000 or best offer 717 677 8168

For Sale Midwest harrow attachment for IH cyclone 400 corn planter 17 mulcher, attachment for IH 45 Vibra shenk with wings. Call evenings 717 758 1739

FARM EQUIPMENT

FARM EQUIPMENT

FARM EQUIPMENT

NEW International

Early Riser Planters



FASTER, EARLIER PLANTING—EARLY RISING CROPS.

Introducing the International Early Riser Planters, the planters for the 80's Early Riser Planters are designed to work through the toughest terrain To let you plow less, plant sooner Faster, too—with simple hand adjustments that get you going in minutes No tools And the Early Riser Planters provide the best possible seed environment, to start your crops out right

Choose from four to twelve row Early Riser sizes Cyclo Air or Plate models The Early Riser Planters See them today!



MIFFLINBURG FARM SUPPLY, INC.

East Chestnut St., Mifflinburg, PA 17844

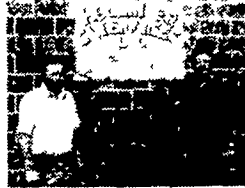
Phone: (717) 966-3114

Evenings - 717-524-2924 - Frank Saner

Hollinger tractor co.

749 Rothsville Rd., Lititz, Pa. 17543

(717) 626-1120
Call
Larry Hollinger
or Lee Dull
HOME
(717) 949-3451



We want your business We'll do our best to serve you Larry Hollinger (left) and Lee Dull

AIR COMPRESSORS

Jaeger 125 \$1 750
(2) Schram, Sharp ready to go ea \$1,750

CRAWLER LOADERS

Cat 951C w/ROPS \$17,500
Cat 955H Pedal Steer Sharp \$12,500
955H Exc Shape ready to go to work \$10,500
Cat 955 12A \$6,500
Cat 977H w/cab 90% undercarriage Level Steer \$14,500
AC HD 6G \$4,500
AC HD4 w/backhoe good undercarriage sharp \$9,500
JD 450C \$13,500
JD 450C w/backhoe sharp \$18,500
JD 555 w/backhoe 1975 \$23,500
HD6 Slant Hood \$6,500
1968 HD6 good undercarriage \$8,500

DOZERS

AC 653 6 way angle dsl w/winch \$6,500
JD 350 straight blade w/winch \$6,500
JD 350B 6 way angle \$9,500
1968 D6C w/cab Sharp 8500 hrs \$32,000

BACKHOES

Bantam C 350 Crane \$8 500
(2) Case 580 ea \$6,000
Case 580B w/ROPS \$10,000
JD 310 w/ROPS Sharp \$11,500
IH 3500 w/1 and 2 buckets 1973 sharp \$11,500

GRADERS

(2) Gradalls 2460 dsl U/D ea \$5,500
AC-45 w/cab (diesel) \$6,500

RUBBER TIRED PAYLOADERS

W5 Case Make Offer
1979 Ford A62, Dsl Articulating Machine 850 hrs \$28,500
Hough 30 \$6,500
Hough HM w/cab new motor good tires ready to go to work \$6,500

TRUCKS

1973 GMC, Tandem Axle w/653 Dsl engine needs work \$6,500
1966 International 2000 Dsl, full screw conventional cab \$3,500
1969 IH Roll Back, new motor good rubber inspect \$7,500

TRAILERS

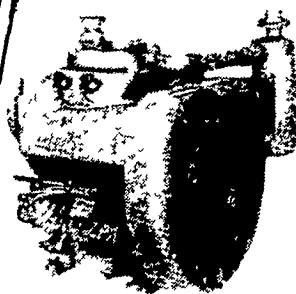
18 Ton General Tag-Along w/air sharp \$6,500
9 Ton General Tag-Along \$2,950
1979 CMI hyd folding gooseneck 35 ton like new \$20,000
35 ton detachable, sharp \$12 500
26 Alum Dump Sharp 54' sides \$7,500

MISCELLANEOUS

(2) Winch to put on truck tractor Make Offer
Riding Sweeper \$950
Air Jackhammer to put on backhoe w/attachs \$1,500
Hobart Welder \$850



WISCONSIN ENGINES



Any Repairs Scheduled Now For Completion Before March 1 Gets 10% DISCOUNT on Parts!

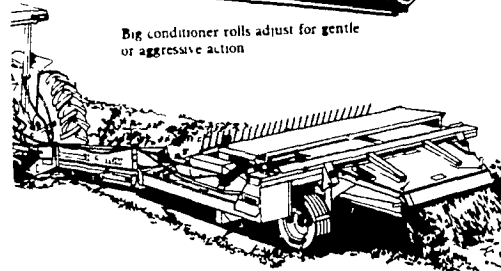
First with a better way.



1070 - 1091



Big conditioner rolls adjust for gentle or aggressive action



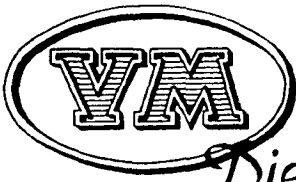
USED EQUIPMENT

NH 268 baler \$1650
NH 273 baler 2350
NH 455 trailer mower 795
JD rotary mower 575
Grimm hay tedder ground drive 850
NI cut conditioner, like new, cut 30 acres 2850
930 case tractor 4100
AC D19 tractor 3200
Cub w/mower, plow and cultivator, nice 2350
NI fertilizer spreader 300
JD 1240 plateless planter 1625
Brillion Cultivator Seeder 650
NI Cut ditioner 1250
NH 456 Mower, new 1700

NEW EQUIPMENT

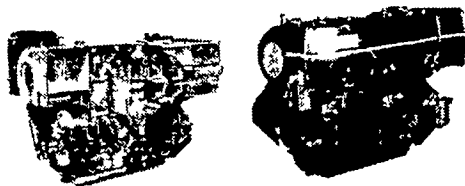
Hesston Farm Equipment
MC rotary scythe & choppers
Pittsburg spring harrows
Farm Bilt wagons 6, 8 & 10 ton
Wisconsin engines from 6 to 65 h p
VM diesel engines from 14 to 150 h p

Authorized Dealer Of



Diesel

ADAPTABLE TO MOST APPLICATIONS



From 13HP to 200HP

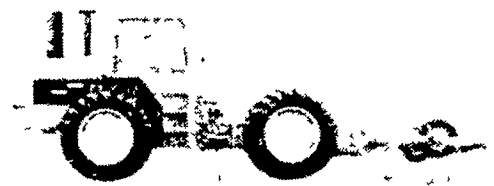
• OIL COOLED • WATER COOLED • AIR COOLED

★ Will Install In Skid Loaders, Balers, Forage Harvesters, Etc.

SALES & SERVICE

MILLER'S REPAIR

1 Mile North of Bird-in-Hand
8 Miles East of Lancaster
RD1, Bird-in-Hand, PA PH. 717-656-9013



ALL DIESEL'S NEW TRACTORS:

MF 4840 4/wheel drive w/all extras Draft Hitch & PTO (Special Price)
MF 275 w/MP With FREE Heathouser cab
MF 245 w/MP With FREE Heathouser cab
MF 230 w/MP SPECIAL PRICE

SPECIAL PRICE ON HEAT HOUSERS FOR MF 1080 and MF 180 Tractors
MF 205 Diesel
WHITE 4-175 4 Wheel drive w/all extras
WHITE 2-45 4 Wheel drive Demo
WHITE 2-45 2 Wheel drive

USED COMBINES:

MF 760 (1978) V8 Dsl w/hydro trans Heater A/C Cab \$47,795
MF 760 (1978) Turbo 6 Dsl w/Hydro trans A/C Cab \$44,795
MF 760 (1978) Turbo 6 w/Hydro trans A/C Cab Dsl \$42,795
MF 750 (1978) Turbo 6 Dsl w/Hydro trans A/C Cab \$42,700
MF 750 (1977) Turbo 6 w/hydro trans \$39,700

MF 510 diesel combine w/air cab 43 corn head grain table exc cond \$33,699
MF 510 w/cab 3 speed trans Dsl
MF 410 diesel w/air cab & grain head \$13,700
OL 525 w/heads \$8750
JD 40 w/10 ft Grain Table \$1895
MM 3490 Grain Combine \$1495
(2) MH 82 Grain Combine \$975

USED TRACTORS:

IHC 1456 w/Cab (1971) \$12,895
MF 135 Gas 308 Hrs \$5295
OL 1550 Industrial loader tractor \$4850
Leyland 154 w/250 Allied Loader 490 hrs diesel \$4295

MF 205 Dsl w/turf tires Woods Mower \$4195
OL 77 w/2 row mtd New Idea Husker \$1985

USED CORN PLANTERS

White 5400 Plantaire planter, dry fertilizer, 6R-30" no-til \$6895
White 5400 Plantaire 4 row dry fertilizer, no-til \$4195

IH 400 cyclone, 6R, no til \$4250
IH 400 dry fertilizer cyclone, 4R no-til \$2495
2 AC dry fertilizer, 6R, no-til \$2875

MISCELLANEOUS

New JD 605 tandem axle 5 ton fertilizer spreader \$4250
New 350 GT grain dryer Special Price
Owantonna 1700 skid steer loader mustang \$3895
MF 15 grinder mixer 1978 \$3498
10 Versatile SP Swather, & conditioner \$1895
Fox 2310 1000 R P M w/new 1 row belted head & P U \$6895
MF 260 w/2 row head & P U \$6895
New 2 MF 200 w/hay P U \$5875
GT 370 grain dryer w/all extras

660 Fox ensilage blower new \$1995 cost \$1485
MF 54 ensilage blower new \$1195
KB 200 Kools grinder & blower \$2195
54 Kools blower \$495
SB 25 Farmhand wheel rake (1979) \$975
MM 2 Star crawler dozer \$3195
IHC 6x16 mtd plow spring trip \$1945
OL 2 bottom pull type plow 2x16 \$475
IHC 10 ft transport disc \$635
JD AW transport disc 14 ft \$1275
Allied 300 loader for MF 35, 135, 235, trac. \$945

GUS FARM EQUIPMENT, INC.

Intersection of Routes 616 & 214

Seven Valleys, PA

(717) 428-1967

