

## Pork Congress

(Continued from Page A1)  
recent upsurge which has caused 30 herds to go into quarantine.

The state vet told the group the Department is encouraging producers with PRV in the herd to depopulate. He added the Bureau of Animal Industries is not planning to approve a pseudorabies vaccine for use within Pennsylvania.

"Once a pig is vaccinated for pseudorabies, it is impossible to differentiate between an infected hog and one that's had the vaccine. And, a vaccinated pig can be exposed to the virus and actually pick it up and become a carrier. This wouldn't be able to be diagnosed through blood testing because the pig would test positive for PRV regardless."

Van Buskirk informed producers a negative blood test for PRV should be done 30-days prior to any breeding stock being brought into Pennsylvania. These hogs should be isolated before introducing them to the herd, he said, and retested within 15 to 30 days after arrival.

Market hogs that have been exposed to PRV must go directly to slaughter, noted Van Buskirk. And, any feeder pigs carrying pseudorabies virus must be fed out at a quarantined feedlot.

The PDA vet told the producers

the state wants to eradicate the disease, not just control it. He announced the federal government has introduced a first draft of suggested minimum standards for a national pseudorabies program, which could include an indemnity program, personnel, and research funds.

However, Van Buskirk was quick to point out, producers should not count on the funds to bail them out of this disease dilemma considering the current Washington administration's feelings on additional programs.

The PDA vet appealed to all the hog producers to cooperate in the effort to confine and eventually eradicate the disease. One step, he suggested, might include permanent identification on all hogs, such as branding or tattooing, so that hogs could be traced back to their point of origin.

Current trends in the hog market were discussed by James Yergler, president of Hienold Hog and Cattle Markets Inc., Kouts, Indiana.

"Hog prices in the future are going to be vulnerable," he said. "But, we've got a strong demand for pork built into the market with last spring's low prices, so hog production should be profitable."

Just how profitable it will be will depend on the price of corn,



Re-elected PPC officers, Abe Fisher, president, right, and Elwood Houser, vice president, left, look over the evening's program with National Pork Producers'

Council Vice President John Saunders. Saunders runs a 120 sow farrow-to-finish operation in Osborn, Mo.

consumer demand for pork, and government export policies, he noted.

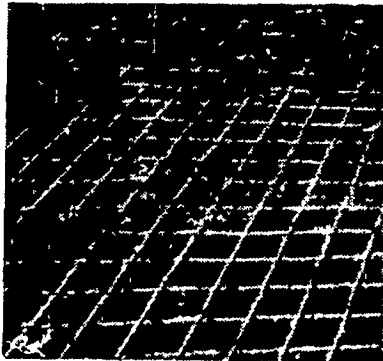
Yergler encouraged the  
(Turn to Page A39)



Representative Eugene Wingert presents a plaque to Pa. Cook-Out King, Joseph Sheffer.

## Slick Problem Areas?

**DAIRYMEN: CONCRETE-GROOVING**  
Cuts Grooves in Concrete Floors



Grooves 1/2" wide x 1/4" deep - 4" apart

- PREVENT SPLITS
- INSTALL IN HOLDING AREAS
- IMPROVE HEAT DETECTION
- INSTALL IN FEEDING AREAS
- PREVENT BROKEN LEGS
- ELIMINATE COWS SKIDDING
- PREVENT CRACKED CONCRETE
- INSTALL IN ALLEYS

Why not join the increasing number of dairymen throughout the Eastern states who now receive profitable benefits from this service.

**CONTACT US TODAY!**

**CONCRETE GROOVING, INC.**

**MERLE BECKER**

399 S. Reading Rd., Ephrata, PA 17522  
PHONE (717) 733-7589

## INVENTORY REDUCTION ABSOLUTE AUCTION

TRACTORS, LOADER-BACKHOES, LAWN & GARDEN TRACTORS & EQUIP., MOWERS, LANDSCAPING EQUIP., TRACTOR PARTS & ACCESSORIES, PICKUP TRUCK

**SATURDAY, MARCH 7**

10 A.M.

for  
**HILTON EQUIPMENT CO.**

At 275 Edison-Furlong Rd., DOYLESTOWN, Pa.

Auct. Note: Everything sells to highest bidder, no minimums, no reserves.

### TRACTORS:

Ford 4000 gas, pwr str., 3 pt., Ford 2110 gas, low center grav., 3 pt., Int 424 gas pwr str., 3 pt.; Farmall Super M; 1979 Bolens-Iseki G-154 diesel, 4 whl. dr., pto & 3 pt. (like new)

### LOADER BACKHOES:

CASE 1740 uni-loader, diesel; FORD 340 30 hp. air-cooled, skid steer loader; FORD 3500 gas w/13' hoe; FORD 4500 diesel w/15' hvy duty hoe, overhauled; FORD 5500 diesel, torque trans., 17' hoe, heated steel cab; CASE (Davis) 6' trenching backhoe for Uni-loader.

### MOWERS:

(2) new FORD 502 side mowers, Ford 515 3 pt. 5' sickle; Ford 907 72" flail, Ford 917 74" flail, Mott B48 hammerknife 790 rpm pto for compact tractors; Mott 72" hammerknife; Mott 72" reverse offset; New Woods L59 60" belly mtd for Ford 1600; Woods 4' 3 pt.,

### LAWN & GARDEN:

Bolens QS-16 16 hp., hydro, 4' mower, Bolens 1050 10 hp. 38" mower; Simplicity 627 & 525 riders w/mowers, Yardman, Ariens, Craftsman riders, New Toro 7 hp 24" 2 stage snow thrower; New Toro S-200E 20" elec. start snow thrower, Ford/Jacobsen snow thrower & blades for tractors, Sweepster 5 hp self-propelled broom; Lawn Vac. for Ford 14 hp tractor, several new Toro, Bolens & LawnBoy rotary mowers some rear bag, self-propelled; Roto-hoe tiller attach., Brinley corn planter, culti sweeper

### PARTS & ACCESSORIES:

Mostly Ford; engine blocks, crankshafts; manifold, carb., hyd valves & pump parts selecto speed trans. parts; lights; fenders; 750 Backhoe boom, main & sub frames, cyl tubes & rods for Ford back hoes-loaders; buckets; street & cemetery pads; Briggs & Stratton eng parts, lot asstd 24", 26", 28" tractor tires, whls. & chains; 20" & 16 5" tires; Also 1964 Ford F-250 pick-up truck; plus many items not listed

Inspection: March 5 & 6 8 A.M.-4 P.M.

Manufacturer's standard warranty on all new equip.

All used tractors & equip. have been fully serviced or overhauled and are in A-1 cond.

Terms: Full payment sale day by cash, guaranteed funds or prior customers approved checks; other checks only w/current bank letter.

Conducted by  
Ralph W. Zettlemoyer Auction Co. Inc.  
(215) 395-8084

## PUBLIC AUCTION

of Modern Farm Machinery,  
Grain Bin, Dryer, Truck  
Cattle Handling Equip.  
& Household Goods

on

**SATURDAY, MARCH 7**

Located 1 mi. east of the village of Oley, between Oley & Yellow House (562), along Rt. 662. Oley Twp., Berks Co.,

AC 200 Diesel w/20.8-38 radial tires, WFE, IH 756 gas 3 pt., WFE; IH 656 Hydro gas, 3 pt., WFE; IH 340 gas, fast hitch, WFE; IH 200 gas, fast hitch; AC Model K C Special combine w/cab, heater & AC; 2-10' grain heads w/hume reels; 330 3 row corn head; NH 770 Harvester w/2 head-like new; NH 275 baler w/thrower & hay preserver att.; NH 469 hay bine; NI 310 corn picker; IH 55 9' 3 pt. chisel plow; IH 710 4x16 ASR plow w/mulcher rake; IH 450 3x16 ASR plow w/mulcher rake; IH 510 16 double disc grain drill w/packer wheels & double grass boxes; IH 56 6 row corn planter w/insect att.; Dickey John monitor & acre counter; Ford 9 1/2' 219 offset transport disc; IH 10' transport disc; IH 45 11' harrow, Brillion & Hugo 10' roller harrows; IH 463 6 row cult-fast hitch; Ubler self unloading cart, NH 256 rake; NH & IH 60 forage wagons, 3 gravity wagons, 5 wagons w/throw bale sides; Century 300 gal. 12 row sprayer; NH 30' bale elevator; NH Super 23 blower w/60' gal pipe; JD 54 spreader; NH flail spreader; 16' alum elev.; 20' elev. on wheels; Vac-O-Way seed cleaner; JD broadcast spreader; Grim ground drive hay tedder; 9' snow plow; 11:00x15 wheels & tires; Hydr. cyls.; Forney elec. welder, walnut boards; elec fence posts; pressure washer; mini-bike; pig troughs; chains 3/4" elec drill; corn sheller, 375 SS tank, forks; shovels; many more tools and other items

Read 23,500 bu. 36' wide grain bin w/ventilating flr., fan & bin sweep; Moridge 400 bu. 3 spd. dryer; Myrath 8'x65' PTO auger, portable; Myrath 6'x28' auger w/motor, portable; 4' auger w/motor; Dickey John moisture tester, Palco Squeeze catch chute, Farmhan corral; 16' feed troughs, creep feeders; mineral feeders; cattle oilers, Starlin 60' bunk feeder; 20'x30' silage conveyors; Badger 12' silo unloader, elec fly killer; Idea farrowing crate, approx. 30 ton straw; some ear corn, hay.

1968 60 Chevy truck w/12 ton hoist, grain body, 5 spd-2 rear axle 10:00x20 tires; 1968 Chevy pick-up 4 spd., port. elec. gas tank.

China closet, GE port. dish washer; GE washer; Seigler 3 & 6 rm. space heaters w/blowers; desk; chest freezer; bureaus; dressers; sideboard; clothes tree; wardrobe; crocks; toys; meat slicer; old meat grinder, dishes, etc.

NOTE ALL equipment has been well maintained and in excellent condition

SOLD FOR,  
**DANIEL H. SCHLEGEL**

Sale at 9:30 A.M.  
Household Afternoon

**FREY** AUCTIONEERS  
JOHN D & GEORGE D  
Yellow House

Cash or Pa. check. Refreshments on premises.