

## Manheim dairyman

(Continued from Page A20)

"We use only dry wood shavings from a cabinet shop and have had no problem with sanitation," Miller said.

Milk house water also drains into the pit and helps operation of the gravity flow system.

One 60-pound bag of shavings is used a day for the bedding. The gutter cleaner is operated every other day.

The Millers are presently milking 70 head and have about 55 young stock. Herd average is about

18,600 lbs. of milk and 630 fat

To date, they've had no problems with the gravity flow system. It has worked just as it had been designed.

Now, instead of hauling manure on a bitterly cold midwinter day, the Millers will be spreading just once — in April. They plan to chisel it in upon application to get the most benefit from the manure.

In addition to the convenience of hauling, Miller calculates he's making considerable savings on fuel and equipment maintenance.

### Adds 15.25% interest charge

## USDA issues corn reserve extension

WASHINGTON, D.C. — Farmers who must settle their reserve corn loans will have at least an additional 30 days to repay their loans, according to Edward Hews, acting administrator of the U.S. Department of Agriculture's Agricultural Stabilization and Conservation Service.

The extension was made to assure orderly marketing of corn, which was jeopardized by transportation problems caused by low water levels on the nation's major grain-shipping rivers, Hews said.

The settlement date for corn in reserve I was February 9; the settlement date for reserves II and III is April 15.

During the 30-day period farmers will pay 15.25 percent interest on their loans, Hews said. Previously, there was no interest charged on these loans.

Hews said the interest rates were changed to reflect the cost of borrowing from the U.S. Treasury and to provide producers an incentive to settle matured or called farm-stored loans promptly.

The new rates take effect the day after the loan's maturity or, in the case of reserve loans, the day after the original date on which settlement is required after a reserve loan is called.

After the final date for settlement, issuance of delivery notices and warehouse takeover for corn under reserve or regular loans will be delayed at least 30 days based on current available storage space and transportation conditions to allow for orderly marketing, Hews said.

"As of January 28, the three reserves held 994.2 million bushels of corn and all three reserves have been called," said Hews.

"The settlement date for the 10 to 15 million bushels in reserve I was February 9. The new interest rates for these loans began on February 10.

"April 15 is the final settlement date for reserves II and III. Under the new rule, producers must pay interest from this date until the called loans are settled," he said.

Hews said interest on regular, nine-month government price support loans would be increased from 11.5 percent to 15.25 percent beginning the day after the loan's maturity date. Producers with these loans also will have at least 30 additional days following the maturity date to redeem their loans or deliver the grain to USDA, Hews said.



Interior of new section of barn on Andrew Miller Jr. farm, R2 Manheim, shows stalls utilizing mats and wood shavings and gutter

cleaning system to move manure to end of structure.

### IN STOCK NOW

#### A FULL LINE OF GARDEN SEED AND SUPPLIES

- S-K TOOLS
- GARDEN HOSE
- KNAPSAC SPRAYERS (ALL SIZES)
- DUST BAG KITS
- SHOVELS-SHOES - RAKES
- CATTLE & HOG MINERALS
- CUSTOM CANVAS WORK

### AARON S. GROFF & SON

FARM & DAIRY STORE

R D 3 Ephrata Pa 17522 (Hinkletown)  
717 354-4631  
Store Hours 7 A M to 9 P M  
Closed Tues Wed & Sat at 5:30 P M

### An Automatic COAL-WOOD FURNACE with ROTARY GRATE? GREAT!



AN ESHLAND INNOVATION WORKING FOR YOU!  
These units are designed for burning both Coal and Wood with maximum efficiency and convenience.

The conditions for burning these two fuels are considerably different and Eshland designers met the challenge.

The AUTOMATIC DUAL DRAFT system and unique ROTARY GRATE make it extremely convenient and easy to switch from one fuel to the other and THERE'S MORE like:  
• Large Capacity 40 & 55 Gal Models  
• Aquastat Controls  
• Available in two parts for easy handling and installation  
• Economical source of domestic Hot Water

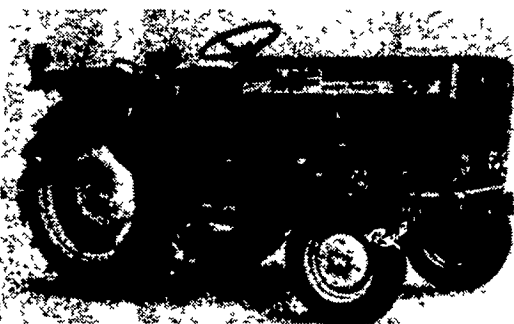
See Us TODAY For All The Details!

SEE US AT THE PARK CITY SHOW MARCH 30 - APRIL 4

### ALTERNATIVE ENERGY SYSTEMS

Allen W. Lawver 381 E Jackson Street New Holland, Pa 17557  
FOR FREE HEATING SURVEY & ESTIMATE CALL 717-354-0412

BUY A 20 H.P. MF TRACTOR IN FEB. & BUT \$300 CASH IN YOUR POCKET



MF Model 205 2 WD AG - 20 HP List \$5701

FEB. SPECIAL \$4795

Less 300 Cash Settlement Allowance

Your Price 4495 FEB. ONLY

★ We invite you to come in and compare - take a test drive - handles with ease.

★ Quick-Attach Loaders Available

"SERVICE IS OUR MOTTO"

## LAWN CARE OF PA.

Sales & Service

Martindale, PA 17549  
1 Mile North of Martindale on Grist Mill Road  
Ph: 215-445-4541

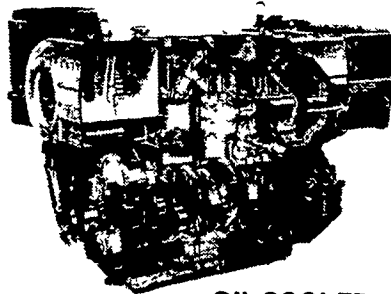
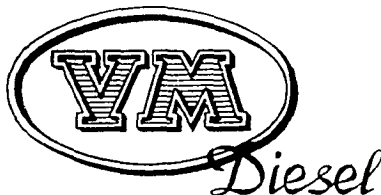
Mon., Tues., Thurs., Fri. 8-8

Wed. 8-5, Sat. 8-2

"A Little Out Of The Way But A Lot Less To Pay"

## REPOWER With VM DIESEL

Harvesters, Haybines, Tractors, Cornpickers, Balers, Hydraulic Systems, Corn Binders, Choppers



OIL COOLED

### USED DIESELS

- SR 1 Lister
- SR 2 Lister
- SR 3 Lister
- HRS 6 Lister
- 1 Cylinder Deutz
- SV 195 - 14 H P
- 1051 VM, 20 H P
- DVA 1500 Slanzi

LR 1 LISTER



All New HR SERIES - Air Cooled - Oil Cooled - Water Cooled  
GENERAL FEATURES

- Integrally cast cylinders with inserted and removable wet type cylinder liners
- Light hypereutectic alloy pistons
- Extra resistant steel connecting rods alloyed with special alloy head bearings
- Surface hardened steel crank-shaft
- Drop-forged, case-hardened and tempered steel camshaft
- Anti-friction cast-iron tappets alloyed
- Cast iron tunnel type crankcase
- Rotary injection pump with mechanical governor
- Force-feed lubrication with built-in circuit and lobe type pump
- Diaphragm pump feed
- Oil and fuel filters with integral type element
- Special structure and patented engine with consequent increases in performance and easier operation with low weight/output ratio low smoke emissions
- Engine based on a design "modulus" formula which allows a maximum parts standardization and interchangeability

### QUEEN ROAD REFRIGERATION

Box 67, Intercourse, PA 17534  
Phone: John D. Weaver - 717-768-9006 or 768-7111 or Answering Service - 717-354-4374

24 HOUR SERVICE