

PUBLIC AUCTION

**LIVESTOCK & MACHINERY
FRIDAY, FEBRUARY 27**

at 9:30 A.M.

Located in Clinton County, 7 miles West of Loganton, Pa., or 1/2 mile East of Route 880, at Tylersville, Pa., on the Greenburr Road.

8 Head Draft Horses

2 Grey geldings hitch good, Black smooth mouth mare, 8 yrs. old sorrel gelding, 8 yrs. old bay gelding, 4 yrs. old bay gelding, sorrel and bay geldings coming 3 yrs. old. Harness and 8 horses, collars, lines etc., 4 horse trees, single and double trees, etc.

MIXED HAY — CORN FODDER AND SOME EAR CORN

40x70 open shelter hog fattening pen

57 Registered & Grade Holsteins

34 cows in milk (5 registered), registered son of Astronaut 2 yrs. old, 5 bred heifers, 17 open heifers and started calves. Several cows just fresh; others in all stages, a good young herd with good production. Owner sampler records will be given at sale.

T.B. and BANGS TESTED

Dairy Equipment

Mueller 600 gals. tank, Lister 12 H.P. high speed dsl., 3 H.P. compressor, Conde Vacuum pump, 3 DeLaval sterling milkers, 2 extra pails, (the above items used less than 2 yrs.), 2 S.S. strainers, S.S. pail, gas water heater, 2 feed carts, calf replacer mixer, large Volcan gas bake oven and 20 gals. dough mixer, milk cans, some butchering equipment

Farm Machinery

Frick threshing machine, Pequea manure spreader, N.I. tobacco planter, 28 ft. elevator, Meyers hay crumper, N.I. no. 206 manure spreader, Farm Bilt wagon w/flat bed, 2 turn carts, I.H. no. 9 mower cut 7 cu. I.H. corn binder, Papec silo filler, J.D. 8 ft. linc drill, J.D. 7 ft. K.B. disk, 3 cultivators, J.D. no. 999 corn planter, potato planter, I.H. 2 way plow, ground driven potato digger, spring wagon, market wagon w/top, Oliver 2-12in. plow, harrow, cultivator, potato plow, dirt scoop, bob sled, 1000 tomato baskets, table saw, forks, shovels and small misc. farm items

Terms - CASH Lunch at Sale

LYDIA K. STOLTZFUS

R.D. #2
Loganton, Pa.

Mark Glick - Auctioneer
Reedsville, Pa.

Public Sales Register

Closing Date - Monday, 5:00 P.M.
of each week's publication

SAT MAR 28 9 30 A M Machinery, Located along
Public Sale of Lancaster Fruitville Pike, 5 miles
Co Farm, Antiques, north of Lancaster, PA Rd
Household Goods and 3, Lititz PA Edna H

SPECIAL HORSE SALE

**DRAFT HORSES, MULES & DRIVING HORSES
FRIDAY, FEBRUARY 27, 1981**

AT NEW HOLLAND
SALES STABLES, INC.

12 Miles East of
Lancaster, Pa. just off Rt.
23, New Holland, Pa.

Horse Sale at 10:00 A.M.

Tack Sale at 9:00 A.M.



2 Load Draft Horses, Mules and Driving Horses
consigned by Ward Wright.

1 Load Draft Horses and Mules consigned by
Norman Kolb.

1 Load Draft Horses and Mules consigned by
John King

1 Load Draft Horses consigned by Christian L.
Smucker

1 Load Draft Horses consigned by Steimer
Bros

1 Load Driving Horses consigned by Jonas
Beiler

1 Load Driving Horses consigned by Don
Boring

1 Load Draft Horses consigned by Ken Mc-
Nealy

1 Load Saddlebred Driving Horses consigned
by Clayton Waterbury

1 Load Saddlebred Driving Horses consigned
by Reuben G. Stoltzfus.

1 Load Draft Horses consigned by Steve
Meadows.

Plus many more consignments.

For more information contact:

Abe Diffenbach, Mgr. Norman Kolb
717-354-4341 717-397-5538

Next Horse Sale March 13, 1981

Huber Estate J Omar
Landis Auction Service

SAT MAR 28 - 10 00 A M

Public Sale of Valubale
123 acre Lebanon Co
Farm and Farm Equip-
ment, located along Col
ebrook Rd approx 2 miles
north of the Village of
Mastersonville, PA Sale
by Walter Hand Gladys M
Weaver E M Murry
Assoc Auctioneers

TUES MARCH 31 9 30

A M Consignment Sale
Located at S Race St,
Myerstown, Pa 17067
Sale held by Wengers
Farm Machinery, Inc

TUE MAR 31 - 9 30 A M

Public Sale of Draft
Horses, Holsteins Dairy
Equipment, Farm
Machinery and some Fur-
niture Located 2 1/2 miles
southwest of Belleville,
PA along Front Mountain
Rd Mr & Mrs Urrie A
Peachey Owners Mark
Glick Auctioneer

TUES MAR 31 2 00

P M Public Sale of 23
acre farm located 1 mile
NW of Reamstown off Rt
272 at Triple G Dairy,
take Stevens Rd, 1st
farm on right, East
Cocalico Twp, Lancaster
Co, PA Terms by Harvey
and Leroy Brubacher ex-
ecutors for Rebecca W
Brubacher Estate Auc-
tioneer Paul W Horst and
Lamar Z Sensenig

APRIL

WED APR 1 - 9 A M Con-
signment Sale by David H
Good located 1/2 mile
North of Route 23 on
North Maple Ave in
Leola, Lancaster Co, Pa
Watch for sale signs F
Snyder, R Martin, C
Wolgemuth, J Fry and L
Horst, Auctioneer

THURS APR 2 Monthly
Cow Sale at the Melvin
Kolb, Inc Sales Barn,
2220 Dairy Road, Lan-
caster, Pa 17601 Dennis
Kolb, Sales Manager,
Robert Mullendore, Auc-
tioneer

FRI APR 3 Public Sale
of 60 head Holstein
heifers, 3 tractors and full
line of Machinery Sale for
Floyd, Justin and Letha
Briggs, Loomis Hill Rd,
Deposit, NY Mel Manasse
Auctioneer

SAT APR 4 10 00 A M
Real Estate 1 00 P M —
Public Sale of lot with
mobile home, Camping
trailers and supplies and
Wood Shop Tools Located
4 miles east of Lancaster
and 2 miles west of Leola
along Rt 23, Lancaster,
PA Sale by Veltsoe
Brothers Robert E Mar-
tin & Son 656 7770 and

Frank L Steller 656-1895
Auctioneers

SAT APR 4 - 9 30 A.M.
Large Inventory Reduc-
tion Sale at Marshall
Machinery, Inc, R D 4,
Honesdale, Pa 18431
Over 60 Farm Tractors,
25 Industrial Units, 200
Pieces of Farm Machinery
Watch for complete listing
or write for information

SAT APR 4 - Wakefield
Lions Club Annual Sale
Held at Powls Feed Ser-
vice, near Wakefield,
along Rt 272, Everett
Kreider and Steve Peter-
sheim Auctioneers

SAT APR 4 - Public Sale
of Farm Equipment, Trac-
tors, Trucks, Sale for
Steve McCarty, Held
south of Muncy, PA along
Rt 54 near Turbotville,
Ralph Horst, C H
Wolgemuth and Harry
Anderson Auctioneers

SAT APR 4 9 00 A M
Schrister Annual Spring
Consignment Farm
Machinery and Tool Sale
Located at the Livestock
Auction about 5 miles
south of Stewartstown,
near New Park, PA
Schrister Sales Co
Manager

WED APR 8 Easter
Lamb and Goat sale at the
Belleville Livestock
Market, Belleville, PA

FARM EQUIPMENT DISPERSAL

The undersigned quitting farming will sell on the farm located
4 1/2 miles northeast of Shippensburg, Cumberland Co., Pa., along
Rte. 533, Shippensburg to Newville, Pa., leave Rte. 81 at King St.
Exit at Shippensburg or Newville Exit on

THURSDAY, FEBRUARY 26

Sale at 9:30 A.M. Sharp
**TRACTORS — SKID LOADER —
J.D. 4400 COMBINE — EQUIPT.**

M.F. 2675 Diesel with cab, Hydra-Power, only 200 hrs.; David Brown 1210
Diesel, 1065 hours, with Dunham-Lehr loader; Oliver 1850 Diesel, Hydra-
Power, w. front, 2200 hours; Oliver 1600 Diesel, narrow front, 3880 hours; 4
row cults to fit 1600; Farmall Super M gas; Farmall BN; Case 1530 Skid
loader; J.D. 4400 Diesel S.P. combine with cab, 13 ft. grain head, No. 444
four row corn head, 1660 hrs., exc. condition; 1954 Ford dump truck; J.D. 4
row 3 pt. cults.; Case 4-18 auto-reset plow; Oliver 348, 3-16 in. auto-reset
plow; Athens transport disc; Winco P.T.O. generator, new, 30,000 w.; 2-10
ft. cultpackers; Brillion spring harrow on wheels; Int. 3 section harrow;
trailer with P.T.O. dump bed; N.H. 352 grinder mixer; Snowlander snow
blower; Arps 3 pt. hydraulic blade; Shaver post digger; Danuser post
digger; tandem axle trailer; small trailer; tractor chains; hyd. cylinders.

**HAY & FORAGE EQUIPT. —
PICKER — DRILL-PLANTERS**

N.H. 278 baler with thrower; N.H. 469 haybine; Hesston P T 10 haybine;
N.H. 450 mower; N.H. 256 and N.H. 56 rakes; Century trailer type sprayer,
new; 40 ft. hay elevator; N.I. 36 ft. elevator, like new, P.T.O. or motor; 4
Bale King 16 ft. racks, on wide track wagons; wagon with 14 ft flat bed; 3-8
ton wagons with McCurdy gravity bins; 2 Int. 110 tandem axle forage
wagons with roofs, N.H. 770 forage harv., 2 row corn head and pickup
attach; large Badger hopper blower; some blower pipe; Green Chop
wagon; Little Giant 6 in. portable grain elevator; Little Giant roll way
elev.; Brady 722 flail chopper, Brady stalk shredder; New Idea 324 two
row picker; A.C. 333 four row No-tilt Planter; Int. 510 offset double disc
drill, drill and planter like new; Int. 2 row planter.

**GRAIN DRYER — SPREADER — OTHER
EQUIPT. — MISC. ITEMS**

Grain Chief No 300 portable grain dryer; Hawkbit 157 tank spreader,
used 1 year; N I P.T.O. fert. spreader; 4 ton feed bin; Meyers blade;
platform scales, endless belt, grindstone, drill press, hog feeders, hog
shelters, chicken and turkey shelters; hog waterers, steel hog and cattle
gates, 3-4 in. treated posts, lumber, 1100 bu. wire corn crib, new chicken
and turkey crates, water tanks, cattle oiler, liquid protein tank, Ritchey
chicken and cow fountains, brooder, large fan, elec. motors, grain
moisture tester, Century pressure washer, new wagon tires, new
heathouser for Int. M, air compressor, air tank, battery charger, torch
cart, bag wagons, old forge, 55 gal. drum of oil, other hyd. and motor oil,
hyd. and handyman jacks, 2 large vises, 1/2 inch elec. drill, bolt cutters, lot
of assorted bolts, lazy susan organizer, bolt cabinets, ext. cords, tools of all
kinds, chains, forks, shovels, bars, hammers, etc.

**DAIRY EQUIPT. — PATZ
UNLOADER — HAY**

Girton 625 gal. bulk tank, auto. temp recorder; Zero pipe line milkers,
stainless steel, auto. washer, 4 units, line for 47 cows; DeLaval wash tank,
steel table, Smith water heater, Queen B portable heater, 150,000 BTU;
Maternal Robot calf milk feeder; pails; strainers; Patz 18 ft. silo unloader;
Patz transfer elevator; lot of alfalfa, orchard grass and clover mixed hay.
Dairy Equipt. sells at noon.

AUCTIONEER'S NOTE — This will be the sale of the year for this area.
For excellent equipment don't miss it.

Terms: Cash or Good Check. Ident required for bidder's No's. Lunch at
sale.

Owner
MRS. WARREN MERKEL
R.R.5, Shippensburg, Pa. 17257
Phone: 717-532-7811

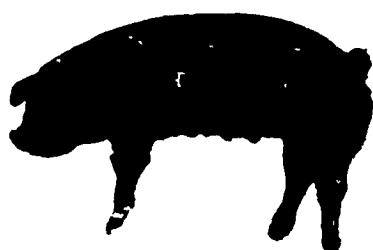
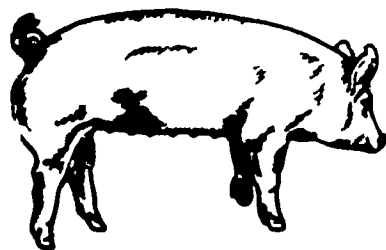
Ralph W. Horst,
Marion, Pa., Auctioneer
Gossert and Eberly, Clerks

Lawrence, Leon and Thomas Arnold 17th PRODUCTION SALE

OF

Yorkshires

Durocs



AUCTIONEER, Harry Bachman, Annville, Pa.

★ **50 BRED GILTS**
(All gilts are hand mated)
Due March & April —
Pick due dates to fit your
farrowing schedule

★ **40 BOARS**
(Ready for heavy service)
25 Yorkshire, 15 Duroc, 7 to 8
months old Ready for Heavy
Service Feed efficiency &
test station information

★ **40-50 OPEN GILTS**
(Ready to breed)
Yorkshire Duroc Crossbred All
animals vaccinated for Erysipelas
& Lepto Negative tested for
Brucellosis & Pseudorabies

Saturday Afternoon, February 28, 1981 1:00 P.M.

Sale To Be Held At The **LEBANON AREA FAIR GROUNDS**
Cornwall & Evergreen Roads, 1 1/2 Miles South Of **LEBANON, PA**

Thank You
To Our Recent
Boar Buyers

Sire
Spring Valley Farm,
Ephrata, PA. 2 Hustle
Wm. Smiley, New York 1 Hustle
Robert Wilson, Delaware 2 Top Choice
John Myers, Schwenksville, PA. . . 1 Explorer
American Cyanamid Corp.,
New Jersey 2 Lexington

CATALOGS AVAILABLE FEBRUARY 15

LEON L. ARNOLD

RD 7, Box 705, Lebanon, PA 17042
Phone: (717) 273-5880

OUR NEXT SALE FRIDAY, APRIL 24

WRITE
OR
CALL