

Berks Co. DHIA

(Continued from Page D10)

Rodger L. Wagner	Mix	4 3	305	17,404	813
Linden Loch Holstein					
#116	H	12 6	305	19,024	661
#78	H	5-3	305	29,987	1066
#166	H	2-0	305	20,347	669
Pine Brook Farm					
#66	H	4 8	305	17,698	774
Charles W. Wagner					
Lola	H	8-11	305	15,574	684
Donald B. Duncan					
#2	H	6 8	292	18,272	679
#66	H	4 8	305	19,373	728
#38	H	3 2	305	24,052	739
#25	H	3 1	305	19,798	706
Charles & Tim Kissling					
Nicki	H	7 0	305	30,289	1031
Bonnie	H	1 11	305	20,801	751
Ernest E. Heckman					
Maggie	H	5 1	305	17,708	716
James H. Adam					
#65LEAA	H	6 0	305	16,312	708
Schnitz	H	4 8	305	15,863	698
Jodie	H	4 4	283	15,479	670
Donald E. Landis					
#168	H	5 4	303	19,636	866
Ralph & Ken Sanner					
Flossie	H	5 2	305	26,540	909
Petunia	H	3-3	305	19,133	673
Polly	H	3 3	305	22,595	747
Charles W. Lamm					
Jill	H	7-3	305	17,843	654
Jenny	H	6 2	305	21,337	742
Felicia	H	5-11	305	20,567	786
Lucia	H	3-4	300	18,861	673
Maxi	H	2 0	305	16,671	669
Leonard G. Stoltzfus					
Selma	H	7-4	305	25,337	932
Angel	H	5 3	305	20,425	706
Susy	H	3 4	305	21,545	668
Mertz Brothers					
Marie	H	10-0	305	24,938	1008
Midge	H	5 11	305	20,560	666
Dora E.	H	5 1	305	21,468	904
Lorna	H	2 2	305	18,881	698
John W. Crossly					
#98	H	5 4	305	16,744	654
Vernon G. Good					
#59	H	3 11	274	14,896	651
Kenneth Zook					
#51	H	6 0	305	22,941	759
Ernest C. Hoffman					
Marsha	H	8 11	305	16,871	650
Robert Yanos					
Peach	H	3 4	305	16,329	664
William G. Howerter					
T. Sherry	H	6 2	305	23,147	1025

Kay	H	5 8	305	18,720	773
Charles Plushanski					
Fern	H	4-4	305	17,608	824
Poppy	H	2 2	305	20,802	656
Raven	H	2 4	305	18,602	911
Swatara Dairy Farm					
#257	H	7 5	280	15,445	681
#29	H	4 6	305	17,226	680
#35	H	4 4	305	22,478	940
#44	H	4 1	266	15,109	660
#59	H	3 6	305	18,342	784
#74	H	3 1	305	18,681	850
#76	H	3 1	305	19,545	767
#97	H	2 5	305	17,979	835
#102	H	2 3	305	15,949	657
Dale H. Wilson					
Level	H	6 3	305	20,032	735
Lori	H	4 9	305	18,361	705
Charles D. Moyer					
Molly 75	H	5 4	292	20,271	654
Rose 121	H	3 9	305	18,826	680
Aim 127	H	3 3	305	17,431	671
Kenneth L. Stutzman					
Bobbi	H	6 10	305	21,166	926
Russell H. Haas					
Faye	H	3 10	305	20,633	724
Ruby	H	3 2	305	20,123	654
Jade	H	3-3	291	18,798	685
John H. Stump					
Sugar	H	6-0	305	20,052	677
Susan	H	5 4	305	20,451	790
Vicki	H	4 1	305	18,524	681
Yolande	H	3 3	305	20,001	666
F. M. Browns Sons Inc					
#42	H	10-1	280	17,354	660
#23	H	6 2	305	24,403	648
#5	H	5 1	305	25,156	858
#87	H	4 11	305	22,935	725
#79	H	3-1	292	21,480	708
#59	H	2-0	305	20,185	677
Richard H. Hoffman					
Candy 90	BS	5 5	305	17,020	703
Stephen J. Janos					
Hope	H	5 6	304	21,501	746
Endora	H	3 2	295	17,439	664
Josie	H	2 1	305	16,666	654
Janus	H	2 0	305	22,368	834
Andrew D. Stoltzfus					
Minnie	H	5 1	305	23,191	992
Dianne	H	6 0	305	24,156	1127
Cristy	H	3 6	305	22,480	810
Daview Farm					
Eloise	H	4 5	305	16,461	681
William C. Adams					
Run	H	6 1	305	23,667	768
Barbara	H	4 11	305	16,555	804
Nellie	H	2 0	305	17,071	657
R. R. Troutman & Sons					
Porcha	H	8 9	283	19,292	679
Laura	H	6 9	305	22,086	916
Petunia	H	4 1	305	17,791	692
Julie	H	2 1	305	19,400	681
Larry L. Mertz					
#55	H	6 9	305	16,486	701
#65	H	3 2	305	17,397	769
Mervin Brubaker					
Rosan 68	H	8 11	305	18,547	747
Debby 95	H	6 4	305	20,362	749
Vale 37	H	6 4	305	19,409	690

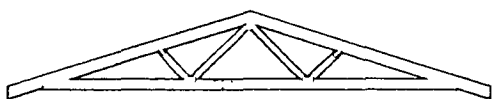
Lancaster Farming, Saturday, February 21, 1981-D13

Joy 61	H	6-1	305	22,980	678
June 59	H	2-8	305	20,730	678
George E. Moyer					
18Krmn	H	5 3	305	17,736	767
Harry P. Shaak					
#327	H	5 2	305	21,939	743
#397	H	3 4	283	17,203	682
Earl R. Hafer					
#167	H	8-2	305	18,795	726
#226	H	6-5	305	15,679	664
#223	Mix	4-9	305	16,006	691
J. D. Rosenbaum & Son					
#87	H	9 3	305	16,096	667
#77	H	0 0	305	21,914	876
#101	H	4 4	305	17,671	671
Robert L. Sattazahn					
Hilda	H	3 7	305	23,883	810
Frank G. Gromlich					
Comet	H	6 5	295	20,846	833
Ideal	H	8-0	305	19,032	741
Mat Mar Farms Inc					
#36	H	6-7	299	18,507	695
#24	H	5 3	305	21,789	874
Clarence B. Kulp					
#96	H	8 8	279	18,009	652
#85	H	5 2	305	25,518	867
#68	H	2 5	305	16,198	754
Raymond A. Seidel					
Jenny	H	6 9	305	20,580	871
Hylark Farm					
#147	H	7-1	305	19,540	699
#175	H	5 7	305	19,860	791
#218	H	3 7	305	16,232	727
Larry E. Phillips					
#88	H	5 5	305	22,249	742
#5	H	3-3	305	23,178	662
Ernest O. Miller					
#181	H	8 3	305	18,708	785
#569	H	3 2	305	21,448	745
Harold & George Schuler					
Merrily	H	5 0	305	21,705	779
Richard W. Hoppes					
#79A	H	7-3	305	15,870	689
#52 A	H	7 7	305	19,878	673
#31 A	H	3 2	305	20,640	830
Lynnacres					
Greta	H	8-1	305	21,596	769
Heide	H	5-5	305	20,637	781
Zelda	H	4-7	305	20,187	789
Whitey	H	3 1	305	18,760	685
Ontelynn Acres					
#19	H	5-1	305	19,454	735
#94	H	3 4	305	16,931	700
Junge Farms					
Ione	H	4 1	305	24,509	904
Effie	H	2-1	305	17,944	716
Raymond B. Nolt					
#4	H	6-1	288	17,208	714
R. Bernvell Burkholder					
Kelly	H	7-9	305	18,343	694
Bendy Brook Farm					
Nora	H	6-3	305	24,870	731
Flame	H	3 7	305	21,811	787
E. Daniel Leatherman					
Helen	H	6-8	305	18,107	737
Wilma	H	5 4	305	21,789	674

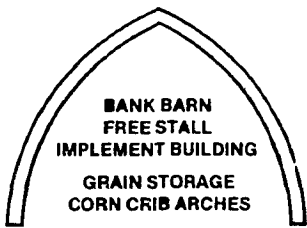
(Turn to Page D14)

Rigidply Rafters

PRODUCTS WE MANUFACTURE AND STOCK



WOOD ROOF TRUSSES



BANK BARN FREE STALL IMPLEMENT BUILDING
GRAIN STORAGE CORN CRIB ARCHES
LAMINATED RAFTERS
CUSTOM BUILT - WILL MATCH



GAMBREL ROOF



MINI BARN



GREENHOUSE

Items we stock:

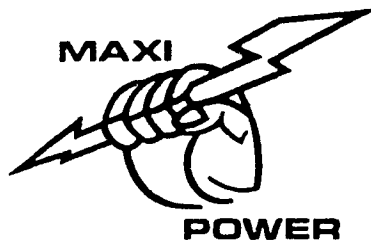
- Laminated Straight Beams
- Farnal Painted Galvanized Roofing
- Special Orders and Accessories
- Treated Timbers and Planking
- Barn Floor Planking T/G
- Cannonball Door Track
- Calf Hutches - Lumber

Versatility also beauty now with faster stronger and more economical construction for all types of farm and commercial buildings

Telephone (717) 866-6581

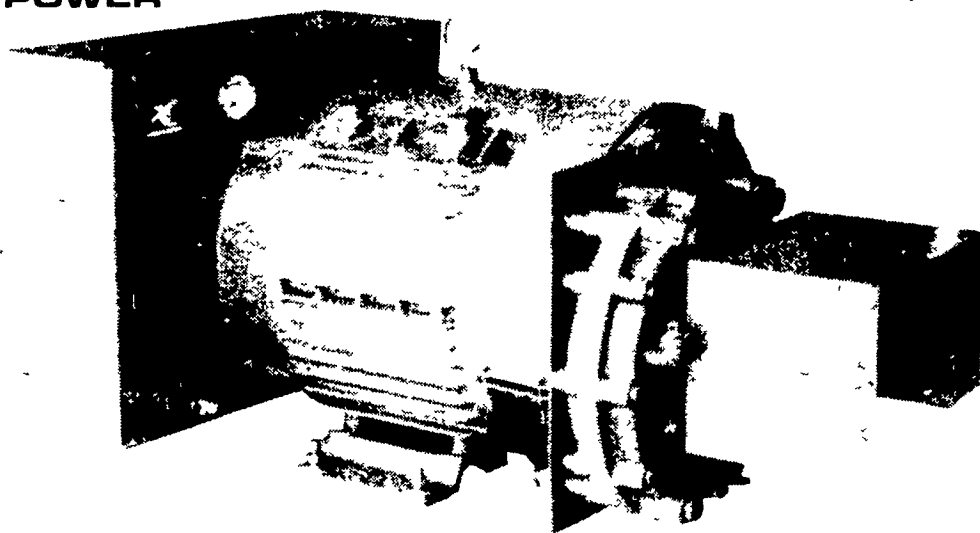
MANUFACTURERS OF LAMINATED RAFTERS AND WOOD ROOF TRUSSES

RICHLAND RD 1, Pennsylvania 17087
OAKLAND RD 2, Maryland 21550

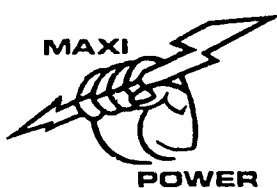


Tractor Driven Generator

- 21,000 watts
- 26,000 watts
- 35,000 watts
- 45,000 watts
- 55,000 watts



- All copper windings
- Rated to industrial continuous duty standby standards
- Permanent magnets in rotor for quick response for field build-up
- Revolving field design
- Precision machined helical gear drive
- Interchangeable gear box 540/1000 RPM
- Color coded volt meter easily visible from tractor
- All controls and receptacles are inside weather protected cover
- Maximum motor starting ability per KW
- Special design full load main output plug
- Patented long life all weather bearing system
- Accurate generator overload protection
- Every MAXI-POWER generator is fully tested and recorded before shipment



MAXI-POWER

GENERATOR SYSTEMS
330 Fonderwhite Road
Lebanon, Pennsylvania 17042
Phone: 717/274-1483

24 HR. SERVICE
RADIO DISPATCHED
TRUCKS

DIVISION OF LEONARD MARTIN COMPANY