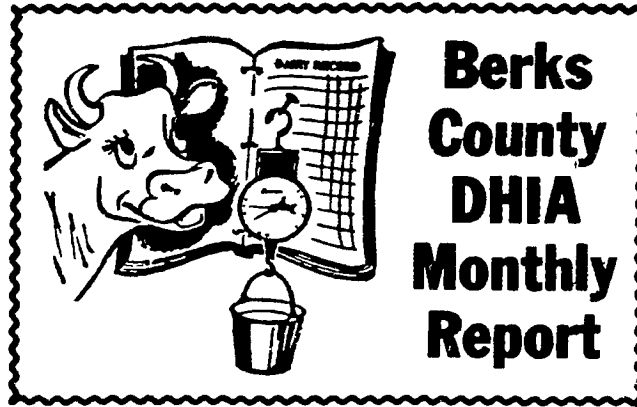


# Chester Co. DHIA

(Continued from Page D8)

Owner	Breed	No. Cows	18,770	38	717
Enos R Perfer 26	3	305	18,770	38	717
Harold Kuip Gleem	1	305	18,357	39	714
Joel C Brown 425	3	305	20,413	35	710
William High 225	3	297	18,264	39	710
Getaway Farm 8473	2	305	17,933	40	710
Henry S King Rachel	3	305	20,738	34	706
Roll A Way Farms Ideal	3	305	17,004	42	706
Daniel M Stoltzfus Tiny	3	305	16,131	44	705
Dale Clymer Sally	3	295	17,953	39	704
Mast Stoltzfus Toddi	3	305	19,603	36	703



## Berks County DHIA Monthly Report

December 1980

The following is the Berks County DHIA report for the month of December, 1980. Only those herds averaging 15 pounds per day or over are listed.

OWNER	BREED	NO. COWS	% DAYS IN MILK	LBS. MILK	% FAT	LBS. FAT
John Newswanger	00	45 0	143 1			
Junge Farms	3	38 5	94 8	57 4	4 3	2 45
Stephen J Janos	3	38 4	87 6	62 9	3 8	2 42
C & T Kissling	3	68 2	80 7	57 9	4 0	2 29
Bendy Brook Farm	3	45 0	92 4	56 8	3 8	2 14

Lancaster Farming, Saturday, February 21, 1981—D9

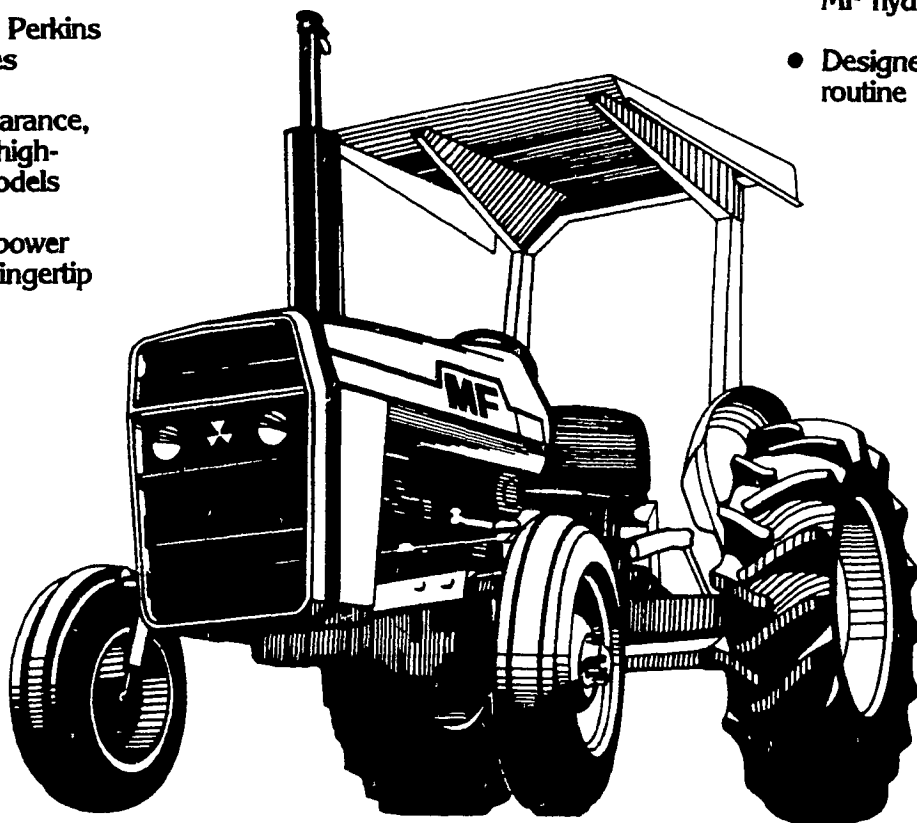
Charles P. Shanks	3	97 9	86 2	52 5	4 0	2 08
Heindel Farms Inc	3	26 0	82 2	49 9	4 2	2 08
Glen High	B3	58 7	83 5	52 9	3 9	2 07
J & P Berry	00	30 0	98 5	52 3	3 9	2 06
Larry E Phillips	B3	37 1	86 5	51 8	3 9	2 04
Mark A Wolfskill	3	78 8	83 1	53 3	3 8	2 03
Ray E Bicksler	3	50 2	88 6	47 5	4 3	2 02
Norman Z Nolt	3	38 1	86 3	54 8	3 7	2 02
Zahncroft Farm	3	50 3	87 1	54 4	3 7	1 99
Hylark Farm	3	76 5	87 0	47 6	4 1	1 97
Wilmer R Martin	3	38 8	89 4	50 3	3 9	1 97
William Howerter	3	96 6	91 9	50 8	3 8	1 93
Vernon G Good	B3	36 6	93 1	56 0	3 4	1 92
William C Adams	3	88 7	86 5	43 1	4 5	1 92
Yost Brothers	B3	112 7	88 7	48 0	4 0	1 91
Leonard Stoltzfus	3	96 1	83 3	49 6	3 8	1 90
Harvey Krill Jr	B3	39 7	86 9	46 6	4 1	1 90
C & F Stricker	B3	51 8	87 2	47 8	4 0	1 90
Arlan Krick	B3	68 0	89 0	44 9	4 2	1 90
Kenneth Stutzman	B3	39 0	92 2	47 4	4 0	1 89
Andrew Stoltzfus	3	146 3	87 5	49 7	3 8	1 89
Reu Hel Farms Inc	3	27 0	89 6	45 2	4 1	1 86
Linden Loch Hol	3	55 6	86 4	46 2	4 0	1 85
Lynnacres	3	101 5	90 8	45 4	4 1	1 85
Win-Dale Farm	4	39 9	90 7	31 3	5 9	1 85
Troutman & Sons	B3	103 2	87 7	47 8	3 8	1 82
Arlan Krick	B3	65 5	84 4	43 0	4 2	1 82
E D Leatherman	B3	66 5	88 8	48 8	3 7	1 81

(Turn to Page D10)

TAKE ADVANTAGE OF BIG FACTORY ALLOWANCES

# "We're ready to deal!"

- 34-81 PTO hp tractors
- Fuel-efficient Perkins diesel engines
- Standard clearance, row-crop or high-clearance models
- Hydrostatic power steering for fingertip control



- Big capacity, proven MF hydraulics
- Designed for fast, easy routine maintenance

## Get a fresh start on spring with a new high-performance MF tractor.

Power up for the busy spring work season with a new Massey-Ferguson tractor . . . sized just right for your operation. There never was a better time, because the factory has given us some extra-special allowances, so we can make you a real deal!

We're dealing with factory allowances, too, on most new Massey tillage tools, planters, hay &

forage equipment and implements . . . plus MF 500 and 700 Series combines . . . so you can get a great bargain on just about everything you've been needing in the way of new farm equipment.

But don't wait, the earlier you act, the better the deal we can make! Selections will be better, too.



See Your Local MF Dealer For Details

**PETERMAN FARM EQUIPMENT**  
225 York Road  
Carlisle, PA  
Ph (717) 249-5338

**LEBANON VALLEY IMPLEMENT CO.**  
700 E Linden St  
Richland, PA  
Ph (717) 866-7518

**ABRACZINSKA'S FARM EQUIP. INC.**  
RD 1, Catawissa, PA  
717-356-2323  
(South on Rt 42)

**M. M. WEAVER & SON**  
N Groffdale Rd  
Leola, PA 17540  
Ph: (717) 656-2321

**S. G. LEWIS AND SON**  
West Grove, PA  
Ph (215) 869-9440  
869-2214

**MARLIN W. SCHREFFLER**  
Pitman, PA  
Ph (717) 648-1120

**N. H. FLICKER & SONS, INC.**  
Maxatawny, PA  
Ph (215) 683-7252

**ARNETT'S GARAGE**  
Rt 9 Box 125  
Hagerstown, MD  
Ph (301) 733-0515

**WEB SNYDER INC.**  
RD 1  
Watsontown, PA 17777  
Ph (717) 538-5555

**WYNNE'S GARAGE**  
RD 2  
Canton, PA 17724  
Ph (717) 673-8456

**RANDALL FRANZEN INC.**  
RD #2  
Woodstown, NJ 08098  
Ph (609) 769-2300

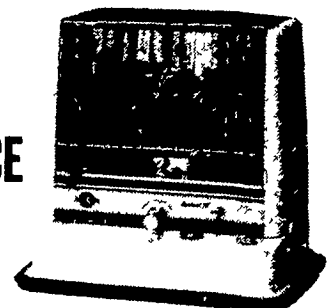
**ACE-JURISTA, INC.**  
RD 1  
Tunkhannock, PA 18657  
Ph (717) 836-2610

**SWARTZ'S GARAGE**  
RD 2  
Richfield, PA 17086  
Ph (717) 694-3861

**ZECHMAN FARM SUPPLY, INC.**  
RD 1  
Selinsgrove, PA 17870  
Ph (717) 374-7231

**KEROSUN** THE WORLD'S FINEST PORTABLE HEATERS

END OF SEASON CLEARANCE SALE



ALL MODELS IN STOCK (Quantity Discount)

**Bowman's Stove Shop, Inc.**

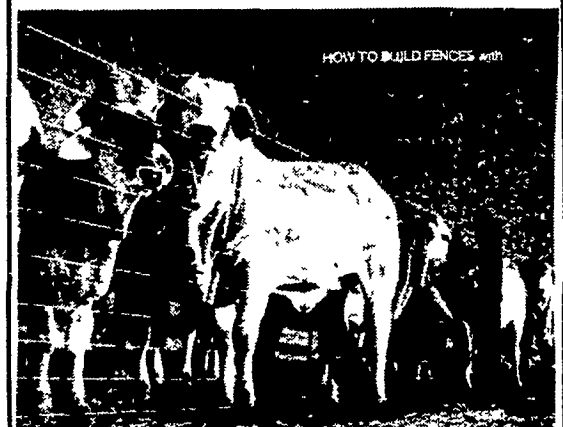
R.D. 3, Napierville Road Ephrata, PA 17522  
Tues., Wed., Sat. 9-5  
Thurs., Fri. 9-9  
Follow the signs from the Light at Hinkletown Monday - Appointment Only



717-733-4973  
Financing Available



ORDER YOUR FENCES NOW FOR SPRING INSTALLATION



The strongest, most durable fences available. Used for electrified and non-electric fences for confining practically any kind of livestock or controlling predators. Hi-Tensile wire fencing costs less than woven wire, is more secure, neater, lasts longer, with less maintenance.

**FENCE SYSTEMS**

R.D. 2, Box 400, Newmanstown, PA  
Phone - 717-866-2855

- Please send free literature
- Enclosed is \$5.00 plus \$1.50 Postage & handling for HOW TO BOOK

Name \_\_\_\_\_

Address \_\_\_\_\_

Phone \_\_\_\_\_