

Public Sales Register

Closing Date Monday 5 00 P M
of each week's publication

SAT APRIL 11 Public Sale of Farm Equipment, Antique Steam & Gas Engines and Household Goods Located 1 mile east of Blue Ball along Rt 322 Ervin M Horst, Owner Nevin Z Martin and Paul W Horst, Auctioneers

SAT APRIL 11 9 30 A M C H Wolgemuth and Sons Annual Public Sale of Farm Equipment and Tools located 4 miles West of Manheim, Lancaster County, Pa Take Hosler Road to Valley Road just North of Rt 283 and 10 minutes from Lebanon Hershey Turnpike Exit 20 (Look for sale signs) C H Wolgemuth, Sale Manager, RD #2, Manheim, Pa

SAT APRIL 11 11 A M 180 acre Poultry Farm Located approx 2 miles west of Morgantown along Rt 23 Caernarvon Twp, Lanc Co, Pa Terms by Jesse R & Verna Mae Stoltzfus Elton & Alvin Horning, Auctioneers, HORNING FARM AGENCY, INC

SAT APRIL 11 9 A M Franklin County Annual Amish School Consignment Sale at Jacob Flauid Farm, 15700 Burnt Mill Rd, Newburg, Pa Quilts, HH goods, furniture, new tools, farm machinery, wagon load items, cattle & horses

SAT APRIL 11, 13th Annual Public Sale of the Rawlinsville Fire Co, Farm Implements Build Materials, Households

Goods & Antiques Items sold on commission Food served Call 284 4530 or 284 4383

WED APR 15 - 9 A M Consignment Sale by David H Good located 1/2 mile North of Route 23 on North Maple Ave in Leola, Lancaster Co, Pa Watch for sale signs F Snyder, R Martin C Wolgemuth J Fry and L Horst, Auctioneer

THURS APR 16 - Monthly Cow Sale at the Melvin Kolb, Inc Sales Barn, 11342 Cragerstown Rd, Woodsboro, Md 21798 Thomas Miller, Sales Manager, Robert Mullendore, Auctioneer

THURS APR 16 Public Sale of Complete Dairy Herd and Farm Equipment Dispersals Located west Cocalico Twp, along Rt 897, Lancaster Co, PA Sale for Robin N & Mim Ginder Randall V Kline and Lloyd H Kreider Auctioneers

FRI APR 17 6 30 P M Consignment of Feeder Cattle & Feeder Pigs at Keister's Middleburg Auction Sales, Inc Rt 522, 3 miles East of Middleburg, 5 miles West of Selinsgrove, Pa Don & Walt Keister, Owners Ray Long & Dave Imes Auctioneers

FRI APR 17 11 00 A M Public Sale of Valuable 97 acre farm, 2 Ford Tractors Farm Machinery, Household Goods Etc Located 6 miles NE of Hughesville near Mt Zion Church Lycoming Co

Rolland & Eleanor Fry Owners Max Fraley & Son Auctioneers 546 6631

SAT APR 18 - Public Sale of Lawn & Garden Equipment Sale for Lawn Care of PA, Daniel Z Martin, Martindale PA Kline & Kreider Auctioneers

SAT APR 18 1 00 P M Public Sale of Feeder Steers Located 12 miles west of York PA 1/4 mile east of East Berlin, PA along Rt 234 C L Cot Jacobs and Barry L Jacobs Owners Clair R Slaybaugh Auctioneer

FRI APR 24 Spring Heifer Sale, 250 300 head of Registered and grade Holstein heifers, springers, bred and open, held at the Belleville Livestock Market, Belleville, PA

FRI APR 24 6 30 P M Yorkshire and Duroc bred gilts, open gilts and boars Held at the Lebanon Fair Grounds For information Leon L Arnold 717 273 5880

SAT APRIL 25 15th Colonial Charolais Spring Sale Location Winchester Auction Market, Winchester, VA Managed By Buzz Garey, 100 Walnut Lane, Morrisville, PA 19067

SAT APR 25 11 A M Consignment Horse Sale at the Keister's Middleburg Auction Sales, Inc Rt 522, 3 miles East of Middleburg, 5 miles West of Selinsgrove, Pa Don & Walt Keister, Owners Ray Long & Dave Imes Auctioneers

SAT APRIL 25 4th Annual Public Consignment Sale of Farm Machinery, large quantity of New Building Materials, Tools, Households, etc by Newburg Hopewell Vol

Fire Co Newburg Pa Cumb Co Art Rife Auct

SAT APR 25 - 10 A M 6 1/4 Acre farm & personal property Located at east end of Cambridge From Honey Brook follow Rt 10 south approx 1 mile to Cambridge Rd, turn west go approx 1 mile to property Honey Brook Twp Chester Co Pa Terms By John B & Kathryn M Weaver Elton & Alvin Horning Auctioneers HORNING FARM AGENCY, INC

SAT APR 25 Wayne Co Calf Sale at Wayne Co Fairgrounds 1 mile north of Honesdale PA just off

Rt 191 Donald Bryant Honesdale, PA

MON APR 27 7 P M Public Auction of Brick Ranch Style Dwelling Located along Rt 322 bet ween Ephrata & Clay Owners Harvey W & Anna Ruth Hahn John E & Paul E Martin Auctioneers

MAY

FRI MAY 1 6 30 P M Heifer Sale Held at G M Livestock Market, Dun cansville PA Selling 300 400 Holstein heifers Registered & Grades

PUBLIC SALE

OF FARM EQUIPMENT

at our place of business located six miles south of Chambersburg, Pa., one mile east of Marion, along Rte. 914 just east of Rte. 81 at Marion Exit on

THURSDAY, FEBRUARY 19

**SALE AT 9:00 A.M.
100 TRACTORS — TRUCKS
IND. EQUIPT., ETC.**

Tractors inc. John Deere, Int, Massey Ferguson, Fords, David Brown, Oliver, Case, A C. and others, some with loaders, Backhoes and Ind Equipt. expected, trucks, lawn and garden tractors, chain saws, etc.

**BALERS — HAY MACHINES
PICKERS — EQUIPT.**

Balers, Haybines, rakes, mowers, conditioners, forage and other wagons, corn pickers, harvesters, blowers, sprayers, manure spreaders, plows, disc harrows, packers, planters, drills, rotary mowers, elevators, 3 pt. blades, post diggers, posts, tires, hardware and usual amount of misc. items

ATTN: FARMERS & DEALERS — Bring in your equipt for our sales Can handle only limited amount of small items until 2 Day Sale March 26 - 27. Booking a good number of sales for spring. Contact us for dates.

Terms: Cash

Lunch at Sale

Closed Sundays

RALPH W. HORST, MANAGER

Marion, Pa. 17235 Phone: 717-375-2824
Rentzel, Anderson, Upperman, Wolgemuth, Speicher, Gossert, Auctioneers
Eberly, Harshman, Stull, Rentzel, Gossert, Clerks

PUBLIC SALE

Having discontinued farming will sell located 1 mile southeast of Frederick, Md. or off I-70 on 355 exit, take Adventist Road across from 76 Truck Stop to New Design Road, south 1st farm on left.

MONDAY, FEBRUARY 16

at 10:00 A.M.

**JOHN DEERE TRACTORS
AND FARM MACHINERY**

John Deere 2520 diesel tractor, W.F., P S, John Deere 1010 Special gas tractor, W.F.; John Deere 170 skid loader w/utility bucket and manure fork; JD F34B 4-16 automatic reset plow, JD F950 cultmulcher, Bush Hog 10 ft transport disc; JD 1600 chisel plow, 9 ft w/flex spring, White 543 six row convet. - no till corn planter w/fertilizer and insecticide boxes and Dickey John; JD 15-7 grain drill; JD 507 Gyramore 7 ft rotary mower; JD 50 scycle bar 7 ft. mower, Ford side rake; JD hay fluffer; JD 24T baler w/thrower, JD 1209 mower-conditioner, 9 ft., N.I. 32 ft. elevator w/new 1 Hp motor; 24 ft mow conveyor; 4 Grove wagons w/hay sides; metal 14 ft. single axle dual wheel tilt trailer w/hand wench; JD 79 tank manure spreader, right side load; JD 3 pt. 6 ft scraper blade; Souder snow blade; 3 pt. post driver; 4 new metal calf pens; feeder trailer; Seed Easy tractor seeder; Chev. and Ford pickup bed trailers; Omaha cattle rack for Chev. 8 ft pickup; 5 Hp. roto tiller; 3 pt. 2 row lay off plow; horse lay off plow; one horse 40 in. grain drill, good condition, Lincoln 225 welder; metal round bale feeders; 2 Jamesway feed carts; feed box; water and feed troughs; 4 metal parts bins and cabinets, cattle head catch gate; corn barrel; snow fence; forge; oil tank w/hand pump; I beam; angle iron; R.R. rails; used lumber; plywood and paneling.

CATTLE

7 open Holstein and 2 Angus heifers to 1 yr., calfhood vac and T B tested

FEED

Approx. 1500 bales of mixed hay

Approx. 700 bales of straw.

Straw and hay to be sold by bulk

NOTE: This is good machinery and well worthy of your attention.

TERMS: Cash - Not Responsible for Accidents.

MR. & MRS. RICHARD L. MCKNIGHT

AUCTIONEER: Robert C. Mullendore

CLERK: C. L. Metz

—Lunch Rights Reserved—

ULRICH'S Complete Farm Auction

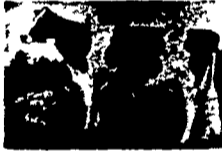
LOCATION — 10 miles Northeast of Troy, Pa., 9 miles South of Wellsburg, N.Y., 4 1/2 miles Southeast of Gillett, Pa. (Auction arrows from White Farm Equipment at Col. X Roads, Pa. and from Gillett-Wellsburg, N.Y.)

TUESDAY, FEBRUARY 17

AT 11 O'CLOCK

BLIZZARD DATE

FRIDAY, FEB. 20, 1981



71 HEAD GRADE HOLSTEIN CATTLE 71

46 milking age animals, consisting of fresh cows, close springers, balance bred for Summer and Fall freshening, 3 Holstein bred heifers, 14 open heifers (breeding age), 8 started heifer calves

Interstate Tested
Innoculated for Colds

Calfhood Vaccinated
Catalogs

MACHINERY & EQUIPMENT

3 Real Good, Clean TRACTORS — Int 756 diesel, 2 Allis-Chalmers D-19's, Int 5-bottom trip plows, A C 5-bottom trip plows, N H 271 baler with Model 50 thrower, Hesston P-10 haybale, N I rake, Gehl 95 grinder, Gehl 99 blower, Int 4-row corn planter, J D 10-ft disc with transport wheels, 2 A C forage choppers, one with 2-row corn head, one with pickup head; 2 forage wagons with 10-ton chassis, 2 wagon chassis with throw boxes, N.H 327 spreader, 3 pth lime & fertilizer spreader, Brillion 5-ft. brush hog, N.I. trailer mower, 40-ft elevator with pto 36-ft Skeleton elevator with electric motor, A.C. combine with bun. Int. 16-hoe disc drill, A.C. blower, A.C. corn planter, 10-ft. harrow, one field sprayer, milk cans, new and used equipment parts, baler twine, metal water tank, quality fertilizer and much more sells at this auction.

2 NEW WIRE CORN CRIBS — One 15-ft., One 10-ft.

MILK EQUIPMENT

Surge 500-gallon bulk tank with washer, Surge Alamo 75 Plus milker pump, 4 Universal milkers, milk transfer system with 100-ft. plastic hose and dryer.

PRODUCE

Approx. 2500 bales hay, sold in 2 lots; 10-ft. sorghum silage in 16x70 silo

TERMS: CASH OR GOOD CHECK SALE DAY. (I.D. Requested).

LOUIS, JULIA, VAUGHN ULRICH

Owners

D. O. Rockwell & Associates, Sale Managers
Troy, Pa. Phone 717-297-3460

LUNCH AVAILABLE PRIVATE SALE OF FARM

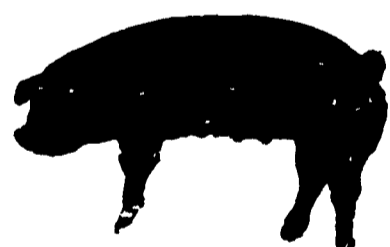
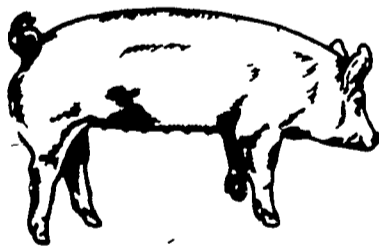
165 acres — 90 tillable, lovely 8-room house with all modern conveniences, 50 stanchion barn, new metal heifer shed, 3 silos, 16x70 concrete silo, 2 10x12 wood silos; abundance spring water, 1 acre pond on back 40 with most scenic view. Interested farm buyers, don't wait too long as this farm is priced to sell. Contact owners: Louis, Julia, Vaughn Ulrich, owners. Telephone 717-596-2798.

Lawrence, Leon and Thomas Arnold 17th PRODUCTION SALE

OF

Yorkshires

Durocs



AUCTIONEER, Harry Bachman, Annville, Pa.

★ 50 BRED GILTS

(All gilts are hand mated)

Due March & April —

Pick due dates to fit your farrowing schedule

★ 40 BOARS

(Ready for heavy service)

25 Yorkshire, 15 Duroc, 7 to 8

months old Ready for Heavy Service Feed efficiency & test station information

★ 40-50 OPEN GILTS

(Ready to breed)

Yorkshire Duroc Crossbred All

animals vaccinated for Erysipelas & Lepto Negative tested for Brucellosis & Pseudorabies

Saturday Afternoon, February 28, 1981 1:00 P.M.

Sale To Be Held At The **LEBANON AREA FAIR GROUNDS**

Cornwall & Evergreen Roads, 1 1/2 Miles South Of **LEBANON, PA**

Thank You To Our Recent Boar Buyers
Sire

Frederick Knepper,
Houstontown, PA 1 Explorer
Frank Horning, Myerstown, PA . . . 2 Hustle
John Ingram, New York. 1 Hustle
Melvin Horst, Myerstown, PA 4 Top Choice
Elam Esh, Ronks, PA. 2 Hustle

Visit With Us At
Our Booth At The
**KEYSTONE
PORK CONGRESS**
February 19
Host Farm,
Lancaster, PA

CATALOGS AVAILABLE FEBRUARY 15

WRITE
OR
CALL

LEON L. ARNOLD

RD 7, Box 705, Lebanon, PA 17042

Phone: (717) 273-5880

OUR NEXT SALE FRIDAY, APRIL 24