

Public Sales Register

Closing Date - Monday, 5 00 P M
of each week's publication

SAT MAR 28 9 00 A M Public Sale of Household Goods, Antiques, Lawn and Garden Equipment, Held at Kempton Community Center, Northern Berks Co

SAT MARCH 28 10 00 A M Public Auction of Modern Farm Equipment Located 4 miles southwest of Ashland, 3 mi north of I 81, Exit 35, 1 mile south of LAVELLE, turn east off Route 901 at Malho Coal Co., take first road right cross Mahanoy Creek to Bolich Farm (watch for auction arrows on the day of sale) Margaretta S Bolich Owner, Deibert Auctioneers

SAT MAR 28 Public Auction of Farm Equipment & 10,800 bu grain bin Located along Bowmansville Rd., Bowmansville, Pa Sale by J Roy Wise Auctioneers John E & Paul E Martin

Fifth Annual Fire Company Sale to be held at the Gap Fire Hall in Gap, Pa. March 28 9 30 A M Household goods, food, new tools machinery, and much more Local auctioneers For information Call Elvin Beiler, 717 442 8126

SAT MAR 28 Copenhaver Farm Supply will hold their spring machinery sale of 25 tractors, 100 pieces machinery, tools, lumber and tires Held at New Bloomfield, PA Perry Co Kling and Shull Auctioneers

SAT MAR 28 11 00 A M

Seidof's Annual Machinery Consignment Sale, Sciota, PA

SAT MAR 28 10 00 A M Public Sale of Farm Equipment, Located in Bloomsburg Rd 5, off Rt 487 north of Bloomsburg to Fowlersville Rd Leg Route 19034 Sale by Raymond Fritz John Autotore and John Autotore Jr Auctioneers

SAT MAR 28 10 00 A M Public Sale of Modern Farm Equipment, located 4 miles southwest of Ashland, 3 miles north of I 81 exit 35, 1 mile south of Lavelle, turn east off Rt 901 at Malho Coal Co take 1st road right cross Mahanoy Creek to Bolich Farm Margaretta S Bolich Owner George and Mike Deibert Auctioneers and Realtor

SAT MAR 28 10 00 A M Public Sale of Farm Machinery, Some Furniture and a few old pieces Located in Huntingdon Co 1 mile west of Water Street, PA on Rt 22, turn north on dirt lane at the Donnley Farm Harry V and Zoe Hough Star Route Alexandria PA Owners Mark Glick Auctioneer

TUES MARCH 31 9 30 A M Consignment Sale Located at S Race St Myerstown, Pa 17067 Sale held by Wengers Farm Machinery, Inc

TUE MAR 31 9 30 A M Public Sale of Draft Horses, Holsteins Dairy Equipment Farm Machinery and some Furniture Located 2 1/2 miles

southwest of Belleville, PA along Front Mountain Rd Mr & Mrs Urie A Peachey Owners Mark Glick Auctioneer

APRIL

WED APR 1 - 9 A M Consignment Sale by David H Good located 1/2 mile North of Route 23 on North Maple Ave in Leola, Lancaster Co, Pa Watch for sale signs F Snyder, R Martin, C Wolgemuth, J Fry and L Horst, Auctioneer

THURS APR 2 Monthly Cow Sale at the Melvin Kolb, Inc Sales Barn, 2220 Dairy Road, Lancaster, Pa 17601 Dennis Kolb, Sales Manager, Robert Mullendore, Auctioneer

FRI APR 3 Public Sale of 60 head Holstein heifers 3 tractors and full line of Machinery Sale for Floyd, Justin and Letha Briggs, Loomis Hill Rd. Deposit, NY Mel Manasse Auctioneer

SAT APR 4 10 00 A M Real Estate 1 00 P M - Public Sale of lot with mobile home, Camping trailers and supplies and Wood Shop Tools Located 4 miles east of Lancaster and 2 miles west of Leola along Rt 23, Lancaster, PA Sale by Veltsoe Brothers Robert E Martin & Son 656 7770 and Frank L Steller 656 1895 Auctioneers

SAT APR 4 9 30 A M Large Inventory Reduction Sale at Marshall Machinery Inc, RD 4 Honesdale, Pa 18431 Over 60 Farm Tractors 25 Industrial Units 200 Pieces of Farm Machinery Watch for complete listing or write for information

SAT APR 4 Wakefield Lions Club Annual Sale Held at Powls Feed Ser

vice, near Wakefield, along Rt 272, Everett Kreider and Steve Peterheim Auctioneers

SAT APR 4 Public Sale of Farm Equipment, Tractors Trucks, Sale for Steve McCarty, Held south of Muncy, PA along Rt 54 near Turbotville, Ralph Horst, C H Wolgemuth and Harry Anderson Auctioneers

WED APR 8 Easter Lamb and Goat sale at the Belleville Livestock

Market, Belleville, PA

THURS APRIL 9 - 11 A M Lamb & Goat - 10 A M Rabbits Located at the Keister's Middleburg Auction Sales, Inc Rt 522, 3 miles East of Middleburg, 5 miles West of Selinsgrove, Pa Don & Walt Keister, Owners Ray Long & Dave Imes Auctioneers

FRI APRIL 10 10 A M Special Draft Horses and Mules Sale at New Holland Sales Stables

PUBLIC AUCTION

VALUABLE FARM EQUIPMENT
HAY - STRAW
SATURDAY, MARCH 14
10:00 A.M.

Located just South of Bainbridge, Pa. Take Wickersham Rd. East from Rt. 441, first lane right after passing Arnolds Weld Shop.

2 Steer Calves
1 App. 450 lbs. - 1 App. 600 lbs.
App. 100 tons Alfalfa Hay
App. 25 tons Straw

Farm equipment includes: Bear Cat 5A Hammermill; 2 - Shelby Vertical Mixers; G M. Power Unit Le Roi Air Compressor; Bulk Feeding Unit; 100' Auger; 30x60 Metal Silo to be moved; Conveyor, Misc. Electric Motors; Tobacco Scaffold; Corn Crumper; Supplement Blender - Automatic; 52" Kools Silage Blower; A C. Blower with motor; N.H. 490 Haybine; Fertilizer Spreader; Aluminum Elevator; Badger Heavy Duty Ensilage Wagons, 250 gal. Water Tank; Badger Silage unloader 15'; Bolens 18 H.P. Riding Mower with Hammer Knife Mower; Metal Troughs; Toledo Dial Milk Scale; 28 Disc Harrow; Fox 3000 Harvester with Sharpener, Mack Truck Tractor 1953 Mdl. Tobacco Wagon Wooden Wheels; Tobacco Presses; Scrap Iron also numerous valuable small items not listed.

Sale By
A. & R. NISSLEY INC.

E.M. Murry Associates

287 Lime Rock Road
Litz, PA 17543
Elmer Murry 626-5244 626-2636
Richard Murry 626-8175 949 2280
Ken Miller 665 2073
Professional Auctioneers
Appraisers and Advisors
Since 1953

PUBLIC SALE

OF FARM MACHINERY &
BEAN HARVESTERS
THURSDAY, FEBRUARY 26
11:00 A.M.

LOCATED: 4 miles West of the Maryland Line on Freeland Rd. - or 1/2 mile East of Middletown Rd. on Freeland Rd.

Tractors - 8 Tractors - Farmall 1206 w/Turbo - 3 pt. - wide front 23x34 rear tires; Farmall 1206 w/Turbo - 3 pt. - wide front 24 5x32 rear tires, 1800 hrs.; Farmall 450 Gas w/Fast hitch & Power steering; Farmall 350 Diesel w/Fast hitch & Power steering; Farmall 300 Gas w/Fast hitch & Power steering; Farmall 230 Gas w/wide front & 2 pt hitch; Farmall 130 tractor; Allis Chalmers HD 6 Dozer; International 503 Combine w/13 ft. Grain head; 430 - 4 Row Narrow Corn head - Diesel motor & cab; 30 ft 6" Grain Auger w/under carriage - P.T.O. drive; A.B. Farquer 4 row Bean Planter; Woods C114 Rotary Mower; 3 - Chisholm Ryder Bean Pickers w/carts mtd. on 504 Farmalls, partly new belts & brushes, model HB26 High Boy; International 700 Semi Mtd. 7x16 Plow (on land hitch), International 560 Semi Mtd. Plow (in furr hitch); International 475 17 ft. Wing Disk; 16 ft. Spring tooth Harrow w/carrier; John Deere 602 Fertilizer Spreader; Century 300 Gal Trailer Sprayer w/Booms; International Cyclo Planter 4 Row w/no-till attachment & adjustable row width; International 510 Double Disc Grain drill 18 disc; International 4 Row front Mtd. Cult., Oliver 540 - 4 row Planter.

Several small items off wagon
TERMS: CASH OR GOOD CHECK.
PAUL & PATRICIA BEDGAR
2108 Freeland Rd.
Freeland, Md.
Ph. 301-357-5677

AUCTIONEER: Blaine Rentzel
Emigsville, Pa.
717-764-6412

AUCTIONEER'S NOTE: Mr. Bedgar is discontinuing his farm operation & has no longer use for this machinery. There are very few small items. We will start promptly at 11:00 A.M.

Note: Auction to begin with farm related items.

PUBLIC AUCTION

Valuable Real Estate &
Personal Property
SATURDAY, MARCH 7
8:45 A.M.

Located in the West end of the village of Penryn, Pa.
Real estate to be offered at 10:00 A.M.

Parcel #1: Real Estate consists of a farm containing 34 acres M/L situated in Penn Township, Lancaster County, Pa thereon erected a frame bank barn, and various storage areas. Also, 3 bedroom frame farm house, with bath, living room, dining room, kitchen and various storage areas Oil fired hot water heat system Also at the same time & place, a separate tract of land containing 7 acres M/L will be offered at the aforementioned location, being a part of same estate

Inspection of Real Estate Feb. 21 and 29 - 1 00 P M to 3 00 P.M on each of the aforementioned dates

Farm Equipment consists of John Deere 1020 tractor, J D. 430 tractor, cultivators, Sauder loader, J D 12 disc, steel wheel grain drill, J D rollover plow, Hershey transplanter, J D 3 pt 7' mower, J D 2 row corn planter, Meyer crumper, J.D #34 manure spreader, 2 section spring harrow, J D 100 riding mower, bale and grain elevators, 2 wagon loads of small items, numerous hand tools, flat wagons, lots of harness, Minnich tobacco press, side delivery rake, cement mixer, 2 horse wooden wheel wagon, team scoop, approx 6000 tobacco lathe, cast iron troughs, grind stone, 2 horse plow, saw mandrel, hand operated corn sheller, rubber tire and wooden wheelbarrows, Lanc cham saw, extension ladders, tractor chains, chicken crates, numerous pcs metal chicken equipment Various milk cans, lots of used lumber, rough cut Cherry lumber, chain hoist, wire and wire fence, offset discs, hot bed sash, B&D 1/2 drill & press

1967 International Pickup Truck
1966 Ford Custom 500 Sedan

Household Items. 2 cedar chests Bedroom suite, bedroom furniture, wicker rocker, lanterns, large early chest, 2 jelly cupboards, dry sink, secretary desk, Boston rocker, clothes tree, extension table, rocking chairs, pictures & frames, lamps, butter scale, tin items, dining room suite, baskets, tables, chairs, crocks, jugs, butter churn, plank chairs, chest freezer, kerosene lamps, Singer treadle sewing machine, Remington 12 ga. pump gun, cast iron door stops, dep. glass, linens, fat lamp, bureau, clock, Carnival glass items. Set Noritake china dogwood pattern, Zenith color T.V. set, jars, also numerous valuable items not listed

Sale by,
**GLENN I. SHOWERS &
EUGENE HUBER**
Executors for Paul Yeagley Estate

J. David Young - Atty.

E.M. Murry Associates

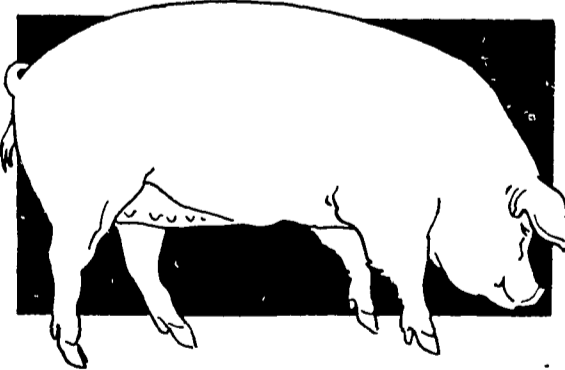
287 Lime Rock Road
Litz, PA 17543
Elmer Murry 626 5244 626-2636
Richard Murry 626 8175 949-2280
Ken Miller 665 2073
Professional Auctioneers
Appraisers and Advisors
Since 1953

CALVIN H. LAZARUS & SONS 7th Production Hog Sale

SATURDAY, FEBRUARY 21, 1981

1:00 P.M.

DUROC YORKSHIRE SPOTTED CROSSES



SELLING:
80 Bred Gilts
30 Boars
40 Open Gilts

Sale held at the farm of Calvin H. Lazarus & Sons, 4290 Bridge St., Whitehall, PA, Lehigh County. 4 miles North of Allentown on Rt. 145 to Columbia St., make left, second black top to right, first farm on left.

FLASH ★ ★ ★

We were pleased to exhibit the Champion and Res. Champion Yorkshire Bred gilt at the 1981 PA Farm Show. We also had the 1st Feb. gilt.

6 Pig Guarantee on Bred Gilts. All stock guaranteed to be breeders. Brucellosis Free Herd #26. Pseudorabies Free Herd #18.

For Catalogs write or call:
Donna Lazarus
4290 Bridge Street
Whitehall, PA 18052

Ralph W. Zettlemoyer, Auctioneer

DOOR PRIZE
Open Gilt and
Other Prizes