

Grange asks balanced approach to grain embargo

WASHINGTON, D C — In a letter to President Reagan, National Grange Master, Ed Anderson, has once again appealed for a more balanced approach in the handling of Soviet grain embargo.

Anderson said the embargo is in jeopardy unless the Administration issues an embargo on all trade with the Soviet Union. Andersen said he is particularly concerned about the approval of export licenses to several major manufacturing companies to supply

equipment to the Soviets to build a 3000 mile pipeline to transmit natural gas from Siberia to West Germany.

Anderson told the President, "It is a gross inequity to American farmers to limit their export potential while at the same time allow another segment of the economy to conduct business as usual."

Andersen warned that dependence on Soviet gas supplies could make Western Europe vulnerable to the dictates of Moscow and open a wide range of international security and political issues.

He explained further that American assistance in the \$15 billion pipeline project amounts to a direct subsidy to the Russian economy.

He said this subsidy comes at a time when

the Soviet economy is engaged in an unprecedented buildup of military power. Andersen said this shows a serious inconsistency and contradiction in foreign policy.

He said, "We are embargoing grain shipments to the Soviets because of their use of military power against their neighbors, while at the same time are ready to subsidize their military economy."

SPECIAL HORSE SALE

DRAFT HORSES, MULES & DRIVING HORSES
FRIDAY, FEBRUARY 27, 1981

AT NEW HOLLAND SALES STABLES, INC.

12 Miles East of Lancaster, Pa. just off Rt. 23, New Holland, Pa.
Horse Sale at 10:00 A.M.
Tack Sale at 9:00 A.M.



2 Load Draft Horses, Mules and Driving Horses consigned by Ward Wright

1 Load Draft Horses and Mules consigned by Norman Kolb

1 Load Draft Horses and Mules consigned by John King

1 Load Draft Horses consigned by Christian L. Smucker.

1 Load Draft Horses consigned by Steimer Bros

1 Load Driving Horses consigned by Jonas Beiler

1 Load Driving Horses consigned by Don Boring

1 Load Draft Horses consigned by Ken McNealy

1 Load Saddlebred Driving Horses consigned by Clayton Waterbury

1 Load Saddlebred Driving Horses consigned by Reuben G. Stoltzfus

1 Load Draft Horses consigned by Steve Meadows

Plus many more consignments

For more information contact:

Abe Diffenbach, Mgr. Norman Kolb
717-354-4341 717-397-5538

Next Horse Sale March 13, 1981

PUBLIC AUCTION

7th ANNUAL FARM MACHINERY & EQUIPMENT SALE

SATURDAY, MARCH 14

9:30 A.M.

Located at Elms near auction barn, Vincetown, N.J.

Consignments welcomed, call early for advertising

Richard P. Allen

Auctioneer

609-267-8382



LOOKING FOR A NEW TASTE?
Read Home On The Range and Junior Cooking Edition

Sale Reports

A Public Auction of shop equipment and machinery was held February 7 by Allen Rearick, West Main St., Millheim, Pa. There was a good attendance at the sale.

Some prices received

were. Gravity Wagons \$230 & \$500, Walsh, Sprayer \$410, Roller Harrow \$250, Disc \$350, Welder & Generator on Trailer \$720, Electric Welder \$100, Gray Portamatic Air Lift Jack \$320, 1949 Chev. Pickup Truck \$105, and 1949 Studebaker 4 door Car \$360

Mark Gluck was the auctioneer.

xxx

A Public Auction of household items was held February 4 at the Southern Manheim Twp. Fire Hall, Fruitville Pk. & Orchard Sts., Lancaster, Pa.

Some prices received were Whiskey Glasses \$15 to \$35 each, Wicker Doll coach \$45, Candle Stand \$45, Agate Tea & Coffee Pots \$15 to \$25 each, 45 pc. Gorham Flatware \$60, Cast Iron Toys & Doorstops \$15 to \$40 each and old Children's Books \$5 to \$15 each.

John H. Cooper was the auctioneer.

xxx

A Public Sale of livestock and farm equipment was held February 6 by John S. Stoltzfus, 5 miles east of Quarryville, along the Bartville Rd., Lanc. Co., Pa.

There were 2 pair of horses sold and each pair brought \$3200. Other items sold were: WD9 Int. Tractor on steel \$1950, N.H. 79 Baler \$2500 and Drive Belts \$300 & 425.

Diffenbach's Auctioneers conducted the sale.

xxx

A Public Sale of real estate and household items was held February 7 by Esther Reist, 40 N. Ninth St., Akron, Lanc. Co., Pa.

The 2½ story semi-detached house was sold to T. K. Grivin of Lancaster for \$30,750. Other items were: Bedroom Suite \$290, Kerosene Lamp \$52.50, Empire Chest of Drawers \$67.50, Pine Blanket Chest \$170, Glass Rolling Pin \$60, Electrolux Sweeper \$150, Oak Comb Rack \$50, Bowfront Oak China Closet \$360 & Noritake Cake Set \$50

Auctioneers were John E. Martin and Paul E. Martin.

PUBLIC SALE

OF REAL ESTATE, HOUSEHOLD GOODS AND ANTIQUES
SATURDAY, FEBRUARY 21

Sale Time 10:00 A.M.

REAL ESTATE 1:00 P.M.

Located along Rt. 322, 2 miles West of Blue Ball, 6 miles East of Ephrata, Lanc. Co., PA.

10 Room House

2½ story brick and frame dwelling with 4 bedrooms, kitchen, dining room, living room, 1½ baths

Well and pressure system, oil-fired hot water heat. 1-car garage Lot size 115 ft. by 250 ft.

Open House (real estate only) Saturday, Feb. 14 from 1:00 P.M. to 4:00 P.M. or for information or inspection call 733-6464 or 354-9255.

Terms. 10% down day of sale. Settlement on or before April 1, 1981.

Household Goods

Frigidaire Refrigerator; G.E. Freezer; Old Rocking Chairs; Folding Chairs; Lawn Chairs; Plant Stands, Bowers Sideboard, Bowers Desk; 2 Sofa Beds (1 like new), Dropleaf Extension Table; Old Extension Table; Domestic Electric Sewing Machine; White Sewing Machine; Hoover Sweeper; Maytag Wringer Washer; Twin Tubs; Half Spindle-back Kitchen Chairs; 6 Decorated Chairs; 4 Beds; Night Stands; Old Stands; 4 Old Chests; Cedar Wardrobe; 3-piece Limeoak Bedroom Suite; 2 Gas Stoves; Utility Table; Play Pen; Step Stool; Clothes Trees; High Chair; 2 Benches; Bathroom Scales; Clothes Hamper; Quilt Frames, Floor Light; Mirrors, some Quilts and Old Bedding; Towels; Throw Rugs and other Rugs; Jars; Bottles; 1,2 & 5 gal. Earthen Jugs; 1,2 & 3 gal. Crock, Old Books, 7 qt Canner; Dishes; Cooking Utensils.

2 Large Iron Kettles; Water Pump with Gas Engine, 200 ft. 1-inch Galvanized Pipe; Small Tools; Nails; Garden Tools

Antiques

Antique Rockers; Newspaper Rack; 4 Spindle-back Chairs, 2 Bureaus with Glass Knobs, Small Rocking Chair; Large and Small Dressers; 4 Washstands (1 with Towel Rack); Chiffonier, Dry Sink; Porch Rockers, Salt Box; Carnival Vase, Goblets, Depression Glass; Wine Glasses, Coal Oil Lights; Doll Quilts; 2 White Counterpanes; Bread Pans; Tin Measuring Cup; Cherry Seeder, Jars; Bottles and lots more.

Terms by:

ISAAC SENSENIG (Trust Estate)

LLOYD & ALLEN SENSENIG (Trustees)

Auctioneers:

Lamar Z. Sensenig, 354-8116

Paul W. Horst, 445-5119

Weaver & Wentz, Attorneys

Lunch by Martindale Fire Co.

Not Responsible For Accidents

PUBLIC SALE

FARMING & TRUCK FARMING & GARDENING TOOLS & SOME HOUSEHOLD ARTICLES
SATURDAY, FEBRUARY 28

At 10:00 A.M.

Located at 253 Cherry St. York Twp. York, Co., PA. Turn east off exit 4 of Rt. 83 on Leader Hgts. Rd. go to the Animal Hospital and take the Powder Mill Rd. to Cherry St. and watch for Sm. farm and place of sale on left, or turn off So. Queen St. in Spry onto Cherry St. and watch for sale on right.

A C D-10 tractor, w/WFE, 1 row cultivator, A C Model CA tractor w/WFE, New rubber, 2 row cultivators, 2 bottom mounted plow, A C 6 ft. mounted mower, A C 2 row corn planter, small disc harrow; land roller, 2 & 3 section S T harrows; A.C. subsoiler, McDeering 1 row PTO potato digger, 1 row tomato transplanter, 11 on age 1 row potato planter, single row corn planter, iron age 200 gal wooden tank PTO sprayer, Grove rubber tire wagon w/grain bed, DB corn sheller, 2 hole corn sheller, platform scales, iron beam walk plow, potato plow, shovel plow, 1 row cultivator, single & double trees, hames, roto tiller, planter Jr garden tractor, sm garden seeder, brooder stove, chicken coops, chicken wire, feeders & fountains; log chains, Block & Tackle, assort of tools, wooden wheelbarrow, 40 ft. ext. ladder, hot bet sash, misc used lumber, pile of maple, cherry, and walnut lumber, racks for 6 ft bed Ford Pickup truck, piles of firewood, kettle stove & butcher kettle, berry crates, bushel boxes, gas cans, crocks, lawn mowers, hanging scales, ice tongues, elec trimmers, used road pipe 8 ft long x 30 in wide, 14 & 15 inch new tires & wheel, Dayton comp scales, tin measures, bookcases, 3 pc L R suite, B & W F V, Zenith stereo, 3 pc B R suite, 2 swivel rockers, and many items too numerous to mention

TERMS: Cash or approved Check

Owners

MR. & MRS. PAUL B. HARTMAN

253 Cherry St., York, PA

Robert L. Sechrist, Auctioneer

Anderson & Warner, Clerks

Not Responsible For Accidents

Refreshment Rights Reserved

REAL ESTATE PUBLIC AUCTION

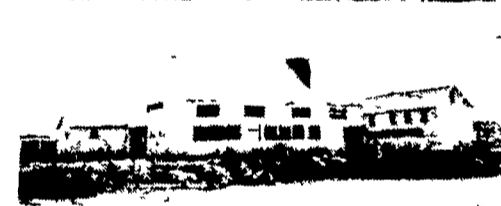
79½ ACRE FARM

THURSDAY, MARCH 5

1:00 P.M.

SALE SITE On the premises in West Cocalco Township, Lancaster County Farm located along Route 897, Northeast of Ephrata and Lancaster

Travel Route 897 two miles North of town of Reinholds and turn left onto Windy Mansion Road to farm on right Watch for auction signs



79½ ACRES, MORE OR LESS, with set of farm buildings consisting of old, 2½ story sandstone dwelling dating back to 1830 with large eat-in kitchen, dining room, family room and living room first floor. 3 huge bedrooms and full bath on second floor. Full attic and basement. Modern oil hot water heat plant and electric breaker service. Many new windows 18" window sills. Also attached 1½ story stone summer house- Stone and frame bank barn with electric and water and new paint, frame workshop and garage 25'x36' with 2- 12'x14' overhead doors complete with electric and water. Smaller shop with electric and water and some additional out buildings with concrete floors. Two 4,000 gallon in-ground fuel tanks Approximately 5925 feet of macadam road frontage on Windy Mansion Road, Blue Lake Road and Rt. 897.

ZONING. The farm will be offered in 2 separate parcels with 38 acres and buildings in Parcel 1, zoned R-200 and 41½ acres, zoned Agriculture in Parcel 2 Also offered together as a whole.

AUCTIONEERS NOTE Property is DEFINITELY FOR SALE to the highest bidder Real Estate is ideal for family farm with lot of frontage to control surroundings OR fine for investment purposes and possible subdivision

FOR INSPECTION, detailed brochure or appointment, call Auctioneer, or come to open house on Feb. 21 and 28 from 1-4 p m

TERMS: 10% of purchase price due sale day. Balance to be paid at closing within 30 days.

TERMS BY

JANET MAE & WILLIS GARMAN JR.



Phone (717) 733-1006