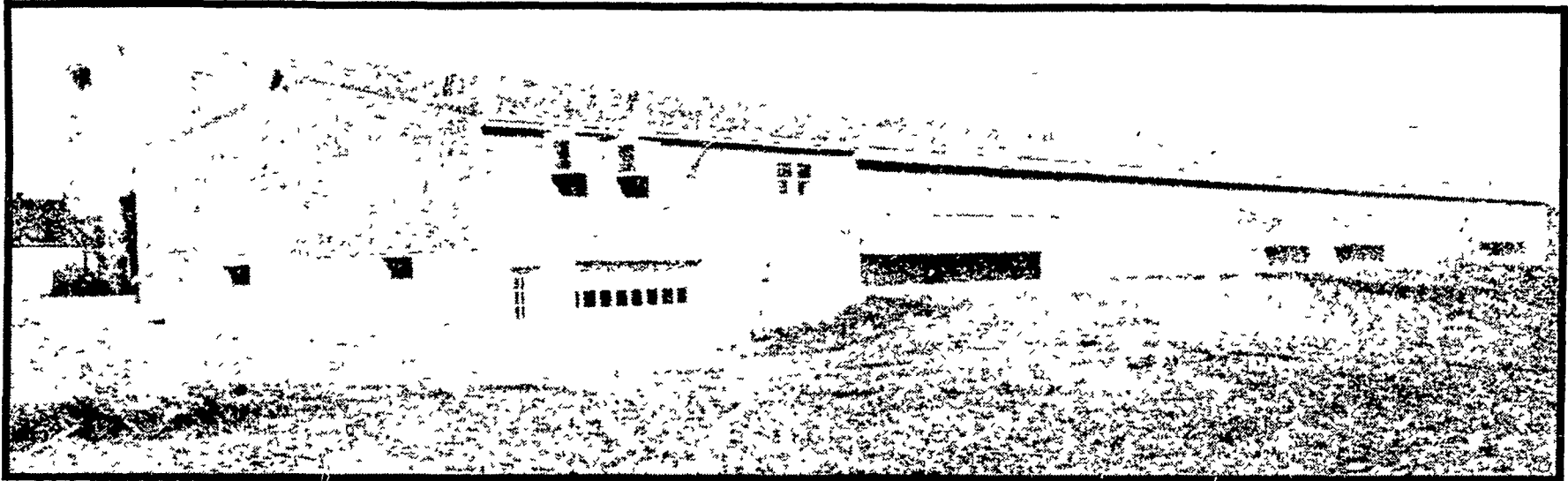


## Here's EGGsciting News From EBERSOLE EQUIPMENT & SUPPLY COMPANY!



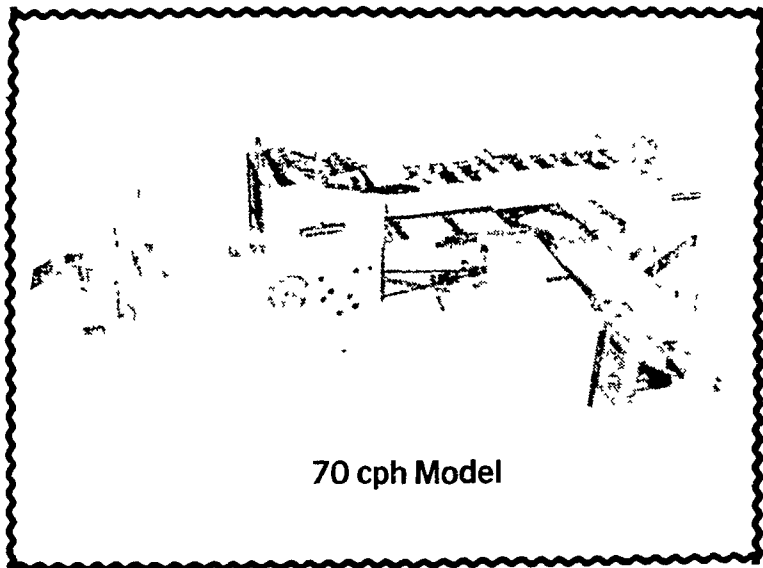
We Now Install  
**DIAMOND EGG HANDLING EQUIPMENT**  
To Make Your Operation More Efficient!



Total Construction & Installation Capabilities...

**EBERSOLE EQUIPMENT & SUPPLY COMPANY** and **JOHN R. EBERSOLE**, Contractor and Builder, Can Build Your Poultry Operation From The Ground Up! Buildings Constructed By Quality Workmen and Diamond Cage Systems Installed By Experts.

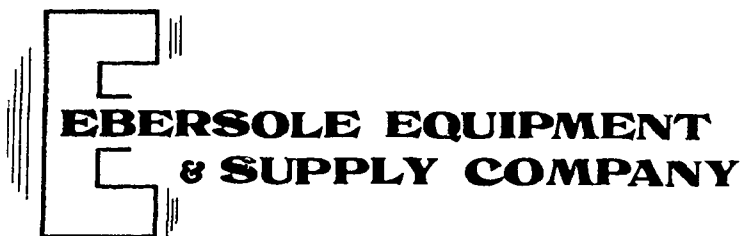
### DIAMOND Automation FARMPACKERS Are EGGscellent!



70 cph Model

- ★ The 70 cph model is fully automatic, easy to install, and specially engineered to handle eggs with gentle authority.
- ★ EGGsactly What You Need...choose from a variety of set-ups, including 90° and 180° turns on either right or left hand take-away belts.
- ★ EGGsceptional Quality...Diamond Automation is known worldwide as the leader in automated egg processing systems!

**FOR MORE INFORMATION...CALL COLLECT!**



**EBERSOLE EQUIPMENT  
& SUPPLY COMPANY**

RD 5, Box 190, Manheim, Pa. 17545  
Phne 717-665-4201 or 738-1305

**JOHN R. EBERSOLE**

Contractor & Builder  
RD 5, Box 190, Manheim, Pa. 17545  
Phone 717-665-6861