

Public Sales Register

Closing Date - Monday, 5 00 P M
of each week's publication

SAT MAR 14 Blain, Perry Co., PA Complete line of farm machinery including 5 tractors, household goods and misc items Blain, Perry Co., PA George Ruoss Owner Sale by Kling's Auction service

SAT MARCH 14 - 10 00 A M Public Sale of Valuable 4 Acre Farm, 58 Acre Farm, 8 Acre Clear Land and 2 1/2 Story Frame House Town Farm Equip., Butcher Equip., Household Goods, Tools and Antiques Located 2 miles east of Rt 443, in Pine Grove, PA John Stattizahn Estate Robert A Arner, Auctioneer

SAT MAR 14 Inventory Reduction Sale by Finger Lakes Tractor, Penn Yan, NY Sale by Goodrich Auction Service

SAT MAR 14 10 30 A M Spring Horse Sale Held at Jersey Shore Livestock Barn Jersey Shore PA Barn in 2 miles east of Jersey Shore on Rt 44 For information call Lynn Boves 717 398 2194

SAT MARCH 14 10 A M Public Auction of Valuable

Farm Equipment, Hay, and Straw located just south of Bainbridge, Pa Take Wickersham Road East from Rt 441, first lane right after passing Arnold's Weld Shop Sale by A and R Nissley, Inc E M Murry, Assoc Auctioneers

TUES MAR 17 10 00 A M Public Sale of 65 Head Holsteins, some dairy equipment and a good line of farm machinery Located in Centre Co., 1 1/2 mile NW of Woodward, PA turn north off Rt 45 onto Cemetery Rd at the West end of Woodward Mr & Mrs Clayton Hettinger, Box 65 Woodward PA Owners Mark Glick Auctioneer

WED MAR 18 9 A M Consignment Sale by David H Good located 1/2 mile North of Route 23 on North Maple Ave in Leola, Lancaster Co., Pa Watch for sale signs F Snyder, R Martin, C Wolgemuth, J Fry and L Horst, Auctioneer

THURS MARCH 19 10 A M Public Auction of

Farm Machinery & Some Hog Equipment Located in Centre Co., 1 1/2 miles East of Centre Hall, Pa on Manor Rd., about halfway between Rts 45 & 192 Sale by Mr & Mrs Dean W Fetterof, RD 2, Centre Hall, Pa Auctioneer Mark Glick

THURS MAR 19 Monthly Cow Sale at the Melvin Kolb, Inc Sales Barn, 11342 Cragerstown Rd., Woodsboro, Md 21798 Thomas Miller, Sales Manager, Robert Mullendore, Auctioneer

THURS MAR 19 - Public Auction of Construction Equipment Located Rt 22, Grantville PA Sale by Dennis M Miller Construction Equipment Sales John E and Paul E Martin, Auctioneers

FRI MAR 20 6 30 P M Consignment of Feeder Cattle & Feeder Pigs at Keister's Middleburg Auction Sales, Inc Rt 522, 3 miles East of Middleburg, 5 miles West of Selinsgrove, Pa Don & Walt Keister, Owners Ray Long & Dave Imes Auctioneers

FRI MAR 20 - 10 A M Large Farm Machinery, Corn Drying Equipment and Trucks Public Auction for Habecker and Carper 2401 Spring Valley Road, Lancaster, Pa just off Rohrerstown Exit, Route 30 Sale conducted by J

Omar Landis Auction Service, J Omar Landis and Jay M Witman, Auctioneers

FRI MARCH 20 - 5 30 P M 50 Tractors and Trucks at Kempton Community Center Northern Berks Co

FRI MAR 20 9 30 A M Public Sale of Household Goods, Hogs, Feeder Pigs and Full Line of Farm Equipment Located 1 mile north of Leola off Rt 23 on 772 Sale by David A & Lizzie Martin Robert E Martin & Son 656 7770 and Frank L Steller 656 1895 Auctioneers

FRI MAR 20 - 10 00 A M

Public Auction of Livestock, Farm Machinery and Household Goods Located Rt 896 4 miles west of Nine Points or take Rt 472 5 miles south of Quarryville, 1 mile east of Black Rock along the Bartville Road, Lancaster Co Sale by Benjamin K Stoltzfus Lloyd Kreider, Randal Kline and Gary Shirk, Auctioneers

SAT MAR 21 11 00 A M Special Horse Sale at the Belleville Livestock Market, Draft Horses, drivers, mules

SAT MAR 21 1 00 P M Sale by PA Yorkshire

Coop, Bred gilts, open gilts and boars, held at the Lebanon Fair Grounds, Leon Arnold 717 273 5880

SAT MARCH 21 Sale of Farm Machinery, Silo Equipment and Tools Off Rt 897 at Gehman School Terms by Eli Martin Leroy S and Paul W Horst, Auctioneers

SAT MAR 21 Saxby Implement Corp Annual Sale of Farm Equip Near Mendon, NY, Ralph W Horst and Blaine Rentzel Auctioneers

SAT MAR 21 Public Sale of Power Farm Equipment, Antiques,

Tools and Personal Property, Located 3 miles east of Oxford, PA E Nott Twp, Rt 4721 1 mile northwest of McComseys Store (Hickory Hill) Sale by Charles H & Lois L Taylor Harry W Whiteside Auctioneer

SAT MAR 21 9 00 A M Spring Sale at Kempton Community Center, Kempton, PA Northern Berks Co Sale of Farm Equipment

SAT MAR 21 9 00 A M Public Sale of Farm Machinery etc Held at Towne Tractor Freehold, NJ John Kachmar Auctioneer

KEYSTONE CLASSIC

ALL BREED SHOW & SALE

Farm Show Building

Show: MARCH 6, 9:00 A.M.

Sale: MARCH 7, 11:00 A.M.

Bred Gilts - Boars - Open Gilts

Breed Secretary's



Berkshire: Arlie Cornblower #1 Box 41 New Freedom, Pa. 17349

Landrace: Larry Baum R #3 Box 422 Elizabethtown, Pa. 17022



Chester White: Charles Griest Rt. #1 Abbottstown, Pa. 17301

Poland: Keith McConnell Box 46 Volant, Pa. 16156



Duroc: Ken Fetterolf R. #1 Box 314 Centre Hall, Pa. 16828

Spotted: Clair Hartman Box 222 Gratz, Pa. 17030



Hampshire: Charles Bomgardner Annville, Pa. 17033

Yorkshire: Leon Arnold R #7 Box 705 Lebanon, Pa. 17042



Sale Manager & Auctioneer

Harry Bachman

138 College Ave., Annville, Pa. 17003
Tel. 717-867-1809

PA. CO-OP

SWINE BREEDERS ASSN.

TWO DAY SALE

Discontinuing farming, will sell on the farm located 1 mile north of Leitersburg, Md. or 2 miles south of Waynesboro, Pa. on Route 316 or 8 miles northeast of Hagerstown, Md. on Route 60.

WEDNESDAY, FEBRUARY 11, 1981

at 11:00 A.M.

57 Head of High Grade Holstein Dairy Cattle 57

Consisting of 12 fresh or close to freshening by sale date; 6 fresh in past 60 days, a good number bred for April & May; balance in different stages of lactation Pregnancy examined by vet.

This is a mostly young herd with plenty of size & quality, having all been bred from artificial breeding with Sire Power over the entire farming operation. Bangs & T.B. tested within 30 days of sale with interstate shipment papers available

Sale held in tent - Loading Chute.

THURSDAY, FEBRUARY 12, 1981

at 10:30 a.m.

Four John Deere Tractors & Good Farm Machinery

John Deere 4320 diesel tractor, W.F., P.S., roll guard and heat houser; John Deere 2640 (1979 model) diesel tractor. W.F., P.S., cab, 1100 hrs.; John Deere 2020 diesel tractor, W.F., P.S., high-low shift; John Deere 48 loader with 7 ft. bucket and 4 ft. manure bucket; John Deere 50 tractor, P.S., 3 pt., John Deere 8 W. 7 ft. sickle bar mower; John Deere tractor weights and chains; pr. 28-8x34 wheels and tires for dual wheel attachment for 4320, John Deere F355H 5-16 bottom automatic reset plow with adjustable pressure valve; John Deere 1600 chisel plow, 12 ft. with flex springs; John Deere 210 transport 12 ft. disc; John Deere 10 ft transport roller-harrow; John Deere 8 ft. pull disc; John Deere FBB 15-7 disc grain drill, fertilizer boxes never used, International 455 conventional 4 row corn planter, 30 in. row with fertilizer and Gandy boxes; John Deere 3800 forage harvester, 1000 RPM, 2 row 30 in. corn head and grass head; John Deere 16 A flail chopper, NH 27 whirl a feed blower; N.H. 489 mower-conditioner, 1 yr.; N.H. 851 round baler with automatic wrap, used 2 seasons; New Holland wheel rake; smoker 24 ft. elevator with new chain and paddles; 1 & 1 1/2 HP elec. 220 motors; 2 John Deere 716 silage wagons, tandem with roof, front and rear unload, 2 yr., Int. 51 silage wagon on John Deere 1065 A chassis, front and rear unload, 2 Grove wagons with hay sides, false end gates, unloader; electric wheel 8 ton wagon chassis; John Deere 465 tank spreader; left side load; Badger 1000 gal. vac. tank honey wagon with 2 hoses; heavy duty hydraulic dump trailer, single axle dual wheel; 2 wheel metal farm trailer; John Deere 78 scraper blade, 8 ft; loader fork bale prong; John Deere 900 16 ft. silo unloader; Smudley wooden mineral feeder and oiler; three 8 ft. metal round or stacked hay feeders; 2 metal feed carts; high and low pressure hydraulic cylinders; tractor seeder; electric fencers; dairy supplies; barn tools; acetylene welder and cart with 8 yr. rights.

Approx. 1200 bales of wheat straw.

30 round bales of alfalfa - 30 round bales of mixed hay.

1 1/2 ton 8-24-10-3 starter fertilizer

Dekalb, Funks, Todd, Jacques seed corn.

1978 G.M.C. 6500 truck 27,500 G.V.W.; 366 V-8, 5 speed transmission, 2 speed axle; 10:00x20 tires, P.S., less than 8000 miles with 16 ft. Parkhurst grain body and heavy duty hoist.

1973 G.M.C. 6000 truck, 366 V-8, 5 speed transmission, 10 00x22 tires, 58,000 miles with 16 ft. Omaha grain-cattle body and heavy duty hoist. Both trucks in excellent condition.

Flat bed 9x28 trailer with adjustable tandem dual wheels, 12 ton capacity hydraulic cylinder for lower bed to ground, made for hauling machinery or hay.

NOTE: This is good, clean, well maintained machinery and worthy of your attention.

Terms: Cash - not responsible for accidents.

MR. & MRS. RICHARD L. EBERSOLE

Telephone: (301) 733-4091

Auctioneer: Robert C. Mullendore

Clerks: Metz and Harshman

—LUNCH RIGHTS RESERVED—

HOUVALE FARMS

6th Yorkshire Production Sale

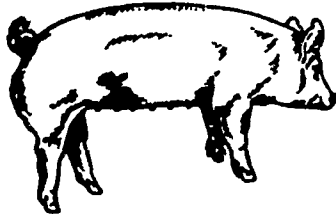
FEBRUARY 20, 1981

SALE 1:00 P.M.

LOCATION: Lebanon Area Fairgrounds, Evergreen Road and Cornwall Road, Rocherty Road East off of Route 72, Lebanon, Pa.

Buy from one breeder at this sale and be confident.

YORKSHIRES



SELLING APPROX.

**50 BRED GILTS
20 OPEN GILTS
20 BOARS**

Most boars and gilts selling are unrelated to other Yorkshires in the East. Bred Gilts are hand mated to fit your farrowing schedule.

All animals will be bled and negative to Pseudorabies and Brucellosis so they can go into any state on sale day.

For Catalogue, Write to:

ELWOOD E. HOUSER

2150 QUENTIN RD., LEBANON, PA. 17042

Phone (717) 272-5798 or (717) 273-2921

THIS IS INVESTMENT DAY

AUCTIONEER: COL. HARRY BACHMAN