

**Public Sales Register**

Closing Date - Monday, 5 00 P M  
of each week's publication

**PUBLIC SALE**

**OF 26 ACRE FARMETTE  
SATURDAY, FEBRUARY 28**

2:00 P.M.

Located along Rt. 372, one mile West of the Buck, Drumore Twp., Lancaster Co., PA.

A certain tract of land consisting of:  
**26 Acres more or less**

with app. 417' of road frontage. 15 acres in high state of cultivation, balance in pasture with stream and one acre pond Erected thereon a:

**1½ Story Brick Dwelling  
Built in 1968**

Kitchen with modern built-in cabinets and family room combined. Living room with wall-to-wall carpet. Bedroom with two closets. Full bath. Laundry. Second floor: 3 Bedrooms with closets. Half Bath. Full cemented basement with fireplace and half bath. Cold cellar. Never failing well Large lawn. Electric heat and water heater. Lots of shrubbery. Shade trees Blacktop driveway.

**50'x54' Frame and  
Stone Bank Barn**

with 7 Hog Farrowing Crates, balance in fattening area. Tool shed.

**12'x60' Hillcrest Two Bedroom  
House Trailer**

with lawn and garden

**30'x125' Hydroponic Green House**

(2 years old) with oil fire hot air heat, two exhaust fans, 7.5 K W. Standby Generator. This green house is complete and ready to go

TERMS: 10% down day of sale. Balance in 60 days.

OPEN HOUSE Saturdays, Feb 14 and 21, 10 A M to 5 P M or by appointment

Sale by:

**J. LEON & MARY LOUISE ROHRER**  
717-284-2059

Atty. E R. Lehman

Aucts.

Nevin Z Martin

Lewis B. Groff

Not Responsible For Accidents

THURS FRI FEB 19-20 - Public Sale of Estate of Brooke Lessig Sunnybrook Colonial Room, Pottstown, PA From Phila take expressway west to Valley Forge Exchange Rt 363 north to Rt 422, then 422 west to Pottstown and the Sunnybrook Ballroom. From Wilmington north on Rt 202 to Rt 100 to Rt 422 East From Allentown take Rt 100 south to Rt 422 east R H Thompson, Inc

FEB 20 - 1 00 P.M Public Sale of Yorkshires Located at the Lebanon Area Fairgrounds, Evergreen Rd and Corn wall Rd, Rocherty Rd East off Rt 72, Lebanon, PA Elwood Houser Owner Harry Bachman Auctioneer

FRI FEB 20 - Public Sale of Farm Machinery and What nots Located 2 miles south of Rt 23, bet ween New Holland and Leola, turn off Rt 23 on S. Groffdale Rd, turn left on Musser School Rd, terms by Elias S Beiler, Robert E Martin & Son 656 7770 and Frank L Steller and Blaine Rentzel Auc-tioneers

**PUBLIC SALE**

**OF FARM EQUIPMENT**

at our place of business located six miles south of Chambersburg, Pa., one mile east of Marion, along Rte. 914 just east of Rte. 81 at Marion Exit on

**THURSDAY, FEBRUARY 19**

SALE AT 9:00 A.M.

**100 TRACTORS — TRUCKS  
IND. EQUIPT., ETC.**

Tractors inc. John Deere, Int., Massey Ferguson, Fords, David Brown, Oliver, Case, A.C. and others, some with loaders, Backhoes and Ind. Equipt expected, trucks, lawn and garden tractors, chain saws, etc

**BALERS — HAY MACHINES  
PICKERS — EQUIPT.**

Balers, Haybines, rakes, mowers, conditioners, forage and other wagons, corn pickers, harvesters, blowers, sprayers, manure spreaders, plows, disc harrows, packers, planters, drills, rotary mowers, elevators, 3 pt. blades, post diggers, posts, tires, hardware and usual amount of misc. items.

ATTN: FARMERS & DEALERS — Bring in your equipt for our sales Can handle only limited amount of small items until 2 Day Sale March 26 - 27 Booking a good number of sales for spring Contact us for dates

Terms: Cash

Lunch at Sale

Closed Sundays

**RALPH W. HORST, MANAGER**

Marion, Pa. 17235 Phone: 717-375-2824

Rentzel, Anderson, Upperman,

Wolgemuth, Speicher, Gossert, Auc-tioneers

Eberly, Harshman, Stull, Rentzel,

Gossert, Clerks

THURS FEB 21 - Public Sale of Farm Equipment Located along Swamp Ridge Rd between Reinholds & Schoeneck, W. Cocalico Twp, Lanc Co., Pa Sale by Dut-chland Laboratories Inc John E & Paul E Martin Auctioneers

SAT FEB 21 - Public Sale of Farm Machinery, household goods, Ford 5000 Diesel, 574 Int. Diesel Located in Lancaster Co, PA, 2½ miles South west of Gap From Route 30 at Vintage go South on South Vin tage Rd to 2nd crossroad, turn left, first farm on left Terms by - Aaron E & Naomi Beiler, Steve Petersheim & Everett Kreider Auctioneers

SAT FEB 21 - 10 30 A M Public Sale of Farm machinery, household goods, Ford 5000 Diesel, 574 Int. Diesel Located in Lancaster Co, PA, 2½ miles South west of Gap From Route 30 at Vintage go South on South Vin tage Rd to 2nd crossroad, turn left, first farm on left Terms by - Aaron E & Naomi Beiler, Steve Petersheim & Everett Kreider Auctioneers

SAT FEB 21 - Public Sale of Farm Equipment Located along Swamp Ridge Rd between Reinholds & Schoeneck, W. Cocalico Twp, Lanc Co., Pa Sale by Dut-chland Laboratories Inc John E & Paul E Martin Auctioneers

SAT FEB 21 - Public Sale of Valuable Real Estate and Personal Property Located midway between Ephrata and Reamstown, East Cocalico Twp, Lan-caster County, PA Terms by Lydia W and Anna Mary Nolt Elton and Alvin Horning, Horning Farm Agency, Inc, Auctioneers

SAT FEB 21 - Public Sale of Hammondale Acres Holstein Milking Herd Dispersal, Located 3 miles northwest of Chambersburg, PA The Gerald Hammond Family Owners Ralph W Horst Marion PA Manager, Horst and Kling, Auc-tioneers, Naugle Pedigrees

SAT FEB 21 - 10 A M Public Sale of Livestock & Farm Equipment Located 4 miles Southwest of the Norman Wood Bridge, 6 miles south of Airville, 5 miles north of Delta, 2 miles south of Rt 372 Lower Chanceford Twp, York Co, Pa Owner Katie F Zook Diffenbach's Auc-tioneers

SAT FEB 21 - Public Sale of Registered and High Grade Holsteins Located just off Rt 6 at East Troy, PA Watch for auction ar-rows off Rt 6 by Warner Co Case Dealer Frank and Lorraine Dombroski Owners Sale Manager Gordon Wood

SAT FEB 21 10 00 A M Public Sale of Real Estate, Household Goods and An-tiques, Located along Rt 322 2 miles west of Blue Ball Isaac Senseng Trust Estate Lloyd and Alan Senseng Trustees Auc-tioneers Lamar Z Senseng and Paul W Horst

SAT FEB 21 4 00 P M Public Sale of Household and Antiques Rd 1, Palmyra, PA north on Railroad St west on Ridge Rd Ralph B Heisey Auc-tioneer

SAT FEB 21 - 6 30 P M Danville Livestock Market, horse sale Located Old Route 11 Danville, PA Melvin M Lehman, owner

SAT FEB 21 - 10 00 A M Auction Sale of Real Estate, Farm and Irriga-tion Equipment Corner of Buck (Rt 553) & Lawrence Corner Roads, Elmer, NJ Buck Road crosses Rt 40 2 miles south of Elmer turn south on Buck Road (Rt 553) and proceed 2 miles signs will be posted William C Olbrich, Owner Sickler & Scott, Auc-tioneers

SAT FEB 21 11 00 A M Public Sale of Farm Machinery, located on the farm, take Rt 20 west from Chestertown, turn left on first road (Airport Rd) 1 mile to farm on left (past Collins Rd) Eben Waterfield Owner Harry Rudnick & Sons Inc Sale Managers and Auc-tioneers

SAT FEB 21 11 30 A M Public Sale of Milking Herd Dispersal, at the farm located 3 miles north of Chambersburg, PA 1 mile south of Letterkenny Army Depot, Gate 1 Cheesetown and Salem Church on Funk Rd Gerald, Mabel, Eddy and Bonnie Hammond and Family Owners Ralph Horst and Art Kling Auc-tioneers

SAT FEB 21 10 00 A M Public Sale of Farm Equip-ment, Located 4 miles east of Hughesville, MD on Rt 231 or 9 miles west of Prince Frederick, MD on Rt 231 Robert L Robinson Owner Blaine Rentzel Auctioneer

SAT FEB 21 1 00 P M Public Sale of 100 Bred Gilts, 30 boars, 40 open gilts, Sale held by Calvin H Lazarus & Sons (Duroc Yorkshire and Spotted) at our farm in Whitehall For Catalog Calvin Lazarus, 4290 Bridge St, Whitehall, PA 18052, 215-799 3375 Lehigh Co.

TUES FEB 24 - 9 00 A M Public Sale of 8 head draft horses, 37 Hosten some swine, farm machinery and some new items from the harness shop Mr & Mrs Jacob B Yoder Rd, Reedsville, Owners Mark Glick Auc-tioneer Located in Mifflin Co 2 miles NE of Reedsville PA on Church Lane, turn-south at Amish school and farm, the former John Z Hostetler farm

**AUCTION**

**POTATO AND GRAIN EQUIPMENT  
SATURDAY, FEBRUARY 28, 1981**

**MR. & MRS. FRANK EHRHART DISPERSAL**

On Nixon Road 4 miles S.W. State College (Centre Co.) Pa. (off Rt. 26) on "Doc" and Nickey Nixon Farm.

Selling complete line, like new Potato and Grain growing, harvesting, storage, drying equipment. Tractors, etc. This will be one of Pa's biggest sales this year. Take your vacation and attend this "Farm Show Sale"

Sale by Pirrung Auctioneers

Wayland, N.Y. Ulysses, Pa. 16948  
716-728-2520 814-848-7421  
Jim Jerry

**AUCTION**

**EXTRAORDINARY  
2 DAY PUBLIC  
ESTATE AUCTION**



**ESTATE OF BROOKE LESSIG  
THURS.-FRI., FEB. 19-20**

10 A.M.

Sunnybrook Colonial Room,  
Pottstown, Pa.

Directions: from Phila. take expressway west to Valley Forge Exchange. Rt. 363 north to Rt. 422, then 422 west to Pottstown and the Sunnybrook Ballroom. From Wilmington north on Rt. 202 to Rt. 100 to Rt. 422 east. From Allentown take Rt. 100 south to Rt. 422 east.

**THURSDAY**

Sale will consist of early antiques, beautiful Chinese oriental rugs, old trains, toys, early nickel slot machine with oak sides, oil paintings, fine Lenox, Dresden and Lumoge china, hundreds of fine collector's items, brass items, army memorabilia, plus a 1979 Pontiac diesel automobile, a 1974 Pontiac station wagon, and a 1946 army jeep ALL THIS PLUS MORE!!!  
PREVIEW — WEDNESDAY, FEBRUARY 18th — 6 to 8 P M

**FRIDAY**

**GOLD, GOLD — SILVER, SILVER**

13 Englehard 10-troy ounce gold bars, over 20 real fine gold coins, approximately 50 silver dollar coins (early dates), large assortment of beautiful jewelry items highlighted with precious stones. Many, many pieces of sterling silver, flatware (sets of 12), 40 rolls of un-circulated 1941 half dollars (brilliant), 200 1941 quarters (uncirculated) old treasury notes. How about 5 - one thousand dollar bills!!! This plus many other collector coins

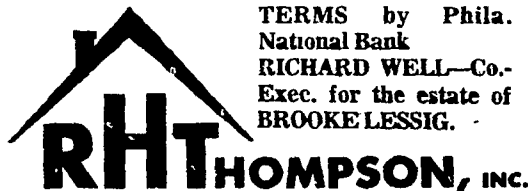
These items have been in bank vault storage for years and years, and will be until the preview showing by appointment - Monday, February 16, 1981 - 1 to 4 P.M., Call R. H. Thompson (215) 323-7872.

Seating Reservations: \$10.00 refundable on purchase

WRITE OR CALL FOR BROCHURE

No personal checks will be accepted without prior approval.

TERMS by Phila. National Bank  
**RICHARD WELL—Co.-  
Exec. for the estate of  
BROOKE LESSIG.**



Real Estate — Auctions — Appraisals

1455 E. Schuylkill Rd.  
Pottstown, Pa. 19464

215-323-7872  
or 367-6907

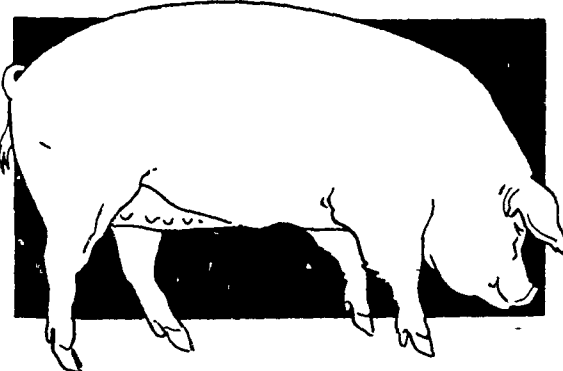
**CALVIN H. LAZARUS & SONS**

**7th Production Hog Sale**

**SATURDAY, FEBRUARY 21, 1981**

1:00 P.M.

**DUROC YORKSHIRE SPOTTED CROSSES**



**SELLING:**

**80 Bred Gilts**

**30 Boars**

**40 Open Gilts**

Sale held at the farm of Calvin H. Lazarus & Sons, 4290 Bridge St., Whitehall, PA., Lehigh County. 4 miles North of Allentown on Rt. 145 to Columbia St., make left, second black top to right, first farm on left.

FLASH ★ ★ ★

We were pleased to exhibit the Champion and Res. Champion Yorkshire Bred gilt at the 1981 PA Farm Show. We also had the 1st Feb. gilt.

6 Pig Guarantee on Bred Gilts. All stock guaranteed to be breeders. Brucellosis Free Herd #26. Pseudorabies Free Herd #18.

For Catalogs write or call:  
**Donna Lazarus**  
4290 Bridge Street  
Whitehall, PA 18052



Ralph W. Zettlemoyer, Auctioneer