

Comfort spells survival for newborn pigs

NEWARK, Del — Comfort means survival for the newborn pig. Without proper management of its environment, its chances of developing into a healthy market hog aren't good, says University of Delaware extension livestock specialist Dick Fowler.

Many types of farrowing systems are used for swine — from the woodlot or field where the sow builds a nest, to the slatted-floor confinement unit with environmental control. Good management is required for all systems. But nowhere else in hog production are management skills as critical as they are in the farrowing house.

During the first few days of its life, the baby pig needs a clean dry draft-free environment with clean air and a temperature of 85-90 F. The sow prefers temperatures of 60-75 F. But she'll adjust to the environment her pigs require better than they'll adjust to hers.

Their needs can rarely be compromised without causing some stress, says Fowler. And preventing stress is a function of management.

Good management starts with a clean farrowing area. All organic matter should be removed and the facility should be disinfected and dry when the sow enters it. Maintain solid floors by using bedding that is replaced when it gets wet, or use slatted floors. Floor surfaces should be smooth to avoid knee and foot abrasions.

Eliminate stress-causing drafts by using solid pen partitions and

solid flooring where the young pigs sleep. A separate area with zone heat keeps baby pigs away from the sow except when nursing and thus increases her comfort. Warmth and light usually will attract pigs away from her, says Fowler.

The temperature in the baby pig area should be 85-90 F during the first three days. A hover can help maintain the temperature in this range.

Look at your pigs for signs of environmental stress. Animals that huddle and shiver are not comfortable. When they spread out under the heat source it's a sign comfortable conditions exist.

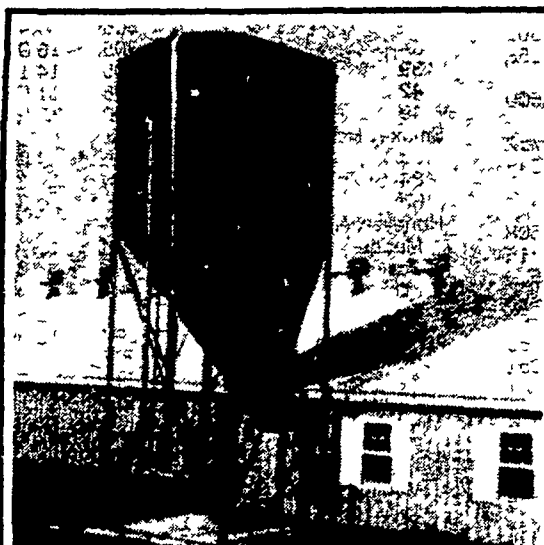
Dry conditions are also important, so manure must be cleaned out daily if solid floors are used. A system that permits the sow to leave the crate twice daily for feed and water helps to reduce messy pens. Slope solids floors 1/2 inch per foot for proper drainage.

The newborn pig has a very ineffective temperature controlling mechanism. Sixty-five percent of all post-farrowing deaths occur before the litter is four days old.

A farrowing house environment that prevents chilling will significantly reduce early pig losses.

If the swine unit operator wouldn't be warm enough in a swimsuit while lying on the farrowing house floor, he can't expect his newborn pigs to be comfortable there either.

learn by doing in 4-H



CUSTOM MADE FEED BINS

- Made of 14 Gauge Steel
- Longer Taper for Easier Flow
- All welded seams which make it water proof and rodent proof
- Can be installed inside or outside building
- Most installations can be made without auger

WILL DELIVER AND INSTALL ANYWHERE FOR FREE ESTIMATE CALL

BETZ'S WELDING SERVICE

717-345-4854
Home: 717-345-3212

We Sell, Service & Install
Bucket Elevators, Grain Augers, M-C Grain Dryers, Distributors, Pipes & Accessories.



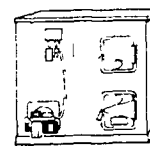
Don't you remember? You filled our tank just last year!

The secret of this family's low oil consumption is neither long underwear nor frequent trips to the Bahamas. It is their HS Tarm combination boiler. This boiler for central hot water systems allows them to burn wood and oil. When fueled with wood, it heats their home and provides oceans of hot tap water as well. Should the wood fire go untended, the oil burner will continue to supply all their heating and hot water needs.

Imported from Denmark, the HS Tarm boiler displays traditional Danish quality in design, construction and performance. It is available in three sizes and comes with American made and approved controls and equipment. See less of your oil delivery man.



HS-TARM
Combination Wood & Oil
Central Heating Systems



AVAILABLE AT

ALTERNATIVE ENERGY SYSTEMS

Allen W Lawver FOR FREE HEATING SURVEY & ESTIMATE
381 E Jackson Street
New Holland, Pa 17557 CALL 717-354-0412

Dealer for Multi-Fuel Central Heaters Wood & Coal Stoves Solar Panels & Wind Generators

ELECTRIC GENERATOR SYSTEMS

- DAIRY FARMS • POULTRY FARMS
- FARROWING HOUSES • CONTRACTORS • ETC

DETROIT DIESEL UNIT

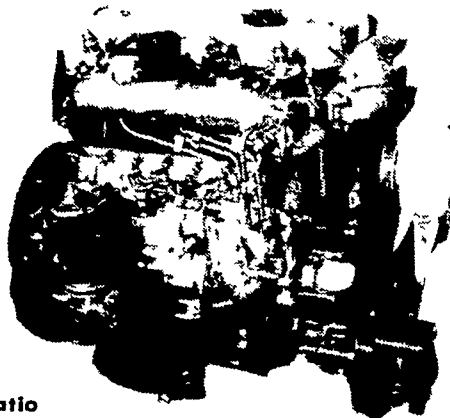
SIZES
60 KW to 1050 KW

MANUAL OR AUTOMATIC

ISUZU DIESEL ENGINES

FOR AUTOMOTIVE AND INDUSTRIAL APPLICATIONS

SIZES
10 KW to 60 KW
18 HP to 211 HP
• High Speed • Low Fuel Consumption
• High Power to Weight Ratio



AUTOMOTIVE ENGINES ARE EPA APPROVED

WE BUILD L.P. GAS GENERATOR SETS

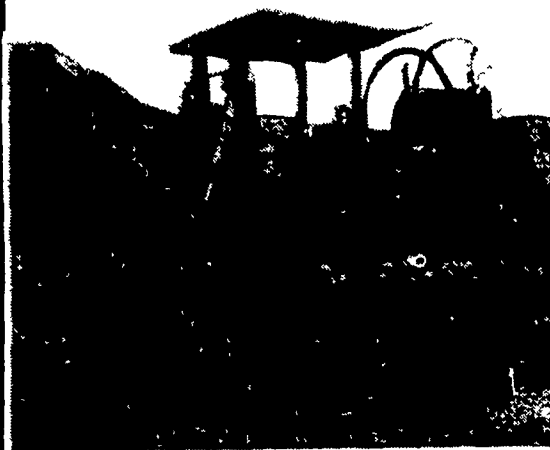
REBUILT GENERATOR SETS ON HAND

15 YEARS OF EXPERIENCE

MARTIN ELECTRIC PLANTS

ISSAC W. MARTIN, OWNER
PLEASANT VALLEY RD., RD 2 EPHRATA, PA (717) 733-7968

DRAINAGE PROBLEMS?



COCALICO EQUIPMENT HAS THE TWO MACHINES TO HANDLE YOUR DRAINAGE PROBLEMS.

★ Both machines Equipped with Laser Beam Grade Control

Drainage Pays High Returns

Investment	Typical Annual Return
Land Drainage	21.46%
Farm Buildings	3.23%
Farm Land	11%
Stocks	7.4%
Bonds	6.1%

COMPARE

Even with the conservative figures shown here, it's obvious that land drainage should top farmers' lists of investment priorities.

★ We Stock Heavy Grade Tubing which Exceeds SCS Specifications. In sizes 4", 6", 8", 10" and 12".

NOW AVAILABLE
15" & 18" Tubing

★ Also Pipe And Fittings For Tile Outlet Terraces.



COCALICO EQUIPMENT CO.

DRAINAGE & EXCAVATING
RD #3, DENVER, PA 17517 PH: 215-267-3808