

Chester, Delaware elect ASC committees

WEST CHESTER — Members of the 1981 ASCS county and community committees were recently elected for Chester and Delaware Counties.

Heading the county in Chester is John G. McCausland, chairman of the county committee. Serving with him are: Herman B. Bramble, Jr., vice chairman; J. Dale Nichol, member; and Paul E.

Hannum and Arthur D. Hershey, alternates.

Chairing the county committee in Delaware County is Walter Craig, Jr. The 1981 vice chairman is Edward S. Fritz, with Robert Craig serving as regular member. Alternate for the committee include Robert P. Balderston and Anne B. Bates.

Community committee mem-

bers include:

CHESTER CO
Community No 1
1 William High Jr chairman E Kent High
Harold R Kulp John Bruner Horace D Wilson
DELAWARE CO
Community No 2
Titus Beam chairman Nicholas Tkaczuk David
E Weaver Vernon R Guest Craig Stoltzfus
Community No 3
C Ivan Stoltzfus Paul E Hannum Ellis Y
Brown III William A Smith George T Murphy
Community No 4
Arthur D Hershey chairman Paul Jacob King
Leslie Walton James I McElhinn Clair G Neal

Community No 5
Charles Wilkinson chairman C Barclay Hoopes
Jr David Darlington Kenneth Roberts James
Steels

Community No 6
1 Simon Z Zook chairman Ernest M Delp J
Dean Cheek Jr Otis A Astel Thomas A
McQueen

Community No 7
Robert W Hocking chairman Charles D
Lester John D St John E Richard Hoopes Jr
Thomas A Gouge

Community 8
Marshall Jones chairman Samuel B Acker Jr
Steve Duncan Harold Pyle J Gilbert Scott

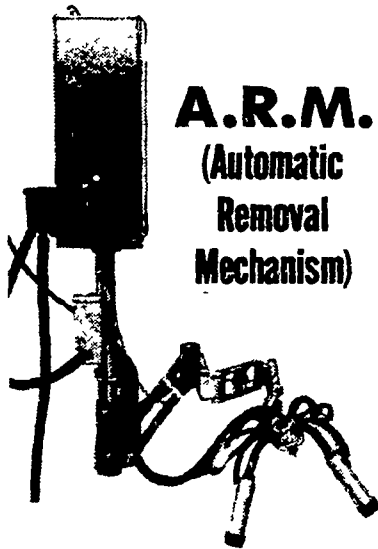


COME ON YOU GUYS... MOVE OVER!

NEED MORE ROOM?
Read The Real Estate Ads
In Lancaster Farming's
Classified Section

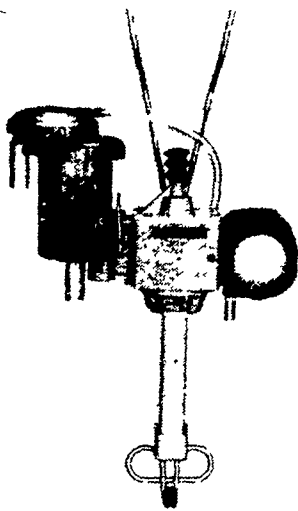
DE LAVAL

Dairy Automation



A.R.M.
(Automatic
Removal
Mechanism)

When the DV 300 milking routine is followed, it's easier on operators, gentler on cows. It can mean more productivity per man hour and more profit for you.



**THE DV 300
MILKER UNIT**

- Accurate sensing of milk flow
- True flotation parallel linkage
- Positive vacuum shut-off
- Prompt removal and retraction
- Attaches easily to high & low udders
- Adapts to high curbs



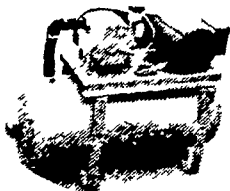
**SUPER
FLO-VU™ CLAW**
High Capacity Milker Claw

- Larger Volume
- Larger milk inlets and outlets
- Improved automatic shut-off
- Wider nipple spread
- Improved air valve design
- Larger air nipples
- Improved thread design
- New rubber bumper
- Manual lock feature
- Clear visibility

DE LAVAL VACUUM SUPPLIERS

The DeLaval Vacuum Pump is the heart of your milker and it's built to last

- No gears pistons valves
- No metal to metal contact
- Low maintenance cool running
- Metered visible fresh oil supply for precision lubrication
- Instant vacuum recovery constant vacuum



**DE LAVAL VACUUM SUPPLIERS —
DURABLE, ECONOMICAL, EFFICIENT**

milking 30 cows or less? still lugging buckets? you need a DE LAVAL COMPACT COMBINE

Saves time trouble bucket scrubbing The whole system cleans in place De Laval Soft Touch Milker units get all the milk All the convenience of pipeline milking at a price you can afford Call us today



- De Laval Vacuum Pumps
- De Laval Dairy Cleaners & Sanitizers
- De Laval Compact Combine
- De Laval Manure Handling Systems
- De Laval Delta-Matic II Freestall Scraper
- De Laval Challenger Feeding System

KEEP CONSTANT QUALITY with DE LAVAL INSTANT PRE-COOLING SYSTEMS

- Inhibits bacteria growth
- Designed for expansion
- Reduces churning
- Eliminates blending problems
- Increases freshness time
- Cleans in place
- Saves space, energy, maintenance costs.

SEE YOUR LOCAL DeLAVAL DEALER

J. M. HORST SERVICE CO.
Quentin, PA
717-274-1242

J. B. ZIMMERMAN & SONS
West of Blue Ball, PA on Route 23
717-354-4955

ERB & HENRY EQUIP., INC.
New Berlinville, PA
215-367-2169

CECIL DAIRY SERVICE
RD 1 - Rt 274
1/2 Mi South Rising Sun, MD
301-658-6923

**R. E. SMELTZER
EQUIPMENT CO.**
R D. 1 Box 253,
Centre Hall, PA
814-364-1419

**BRADFORD COUNTY
DAIRY SUPPLY**
RD 1 Rome, PA
717-247-7414

BURCHFIELDS, INC.
Railroad St., Martinsburg, PA
814-793-2194

CARL BAER
Elliottsburg, PA
717-582-2648

**PEOPLES SALES
& SERVICE**
Oakland Mills, PA
717-463-2735


J.D.C. SALES INC.
RD 1 - Box 281
Biglerville, PA
717-334-1987

**FRANKLIN D. HESS
FARM EQUIPMENT**
RD 2
Orangeville, PA
717-925-6939

I.G.'s AG SALES
Silverdale, PA
215-257-5136

**WITMER
IMPLEMENT SERVICE**
RD 3
Shippensburg, PA
717-532-6139

**G. HIRAM
BUCHANAN, INC.**
Rte 519 N off Rte 46
P O Box 185
Belvidere, NJ 07823
201-475-2185



**ATTENTION
FARMERS...
FREE
ESTIMATES
ON RODENT
CONTROL**

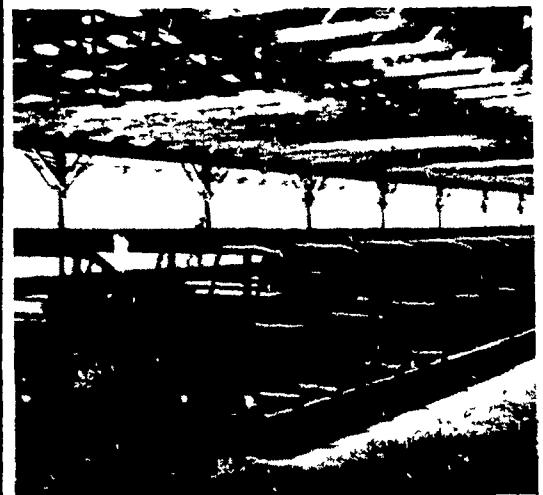
RODENTS carry diseases which can endanger the health of your flocks. Your business is raising the flocks. Ours is protecting them.



Since 1928
Pest control is too important
to trust to anyone else

1278 Loop Rd.
Lancaster, Pa.
17604
717-397-3721

FREY FREE STALL LIFETIME FREE STALL HOUSING



Cut bedding costs 75 per cent, reduce labor for barn cleaning and cow washing, reduce teat and udder injury to the minimum — house your milking herd in free stall housing. Each cow provided a stall for loafing. She won't be stepped on the rear curb forces manure out into alley for mechanical cleaning or washing. A few minutes twice a day cleans the stalls and curbs, bedding lasts almost forever if your stalls fit the cows. Popular sizes are 6'6", 7' and 7'6" Size 'em by breed.

Our free stall partition may be mounted on wooden head boards or we make a steel divider. Set the legs in 8 to 10" concrete curbs to hold and retain bedding. Stall floor can be soil, sand or gravel. Bedding — straw, sawdust, peanut hulls, ground corn cobs, etc. Should be installed with paved alley surface 8 feet wide for mechanical cleaning or washing.

- 8 Models all steel welded farm and feedlot gates
- 2 Models all steel welded head catch gate

For prices, contact: Fred Frey, Mgr.
(717) 786-2146

FREY BROS.
RD 2 Quarryville, PA 17566