

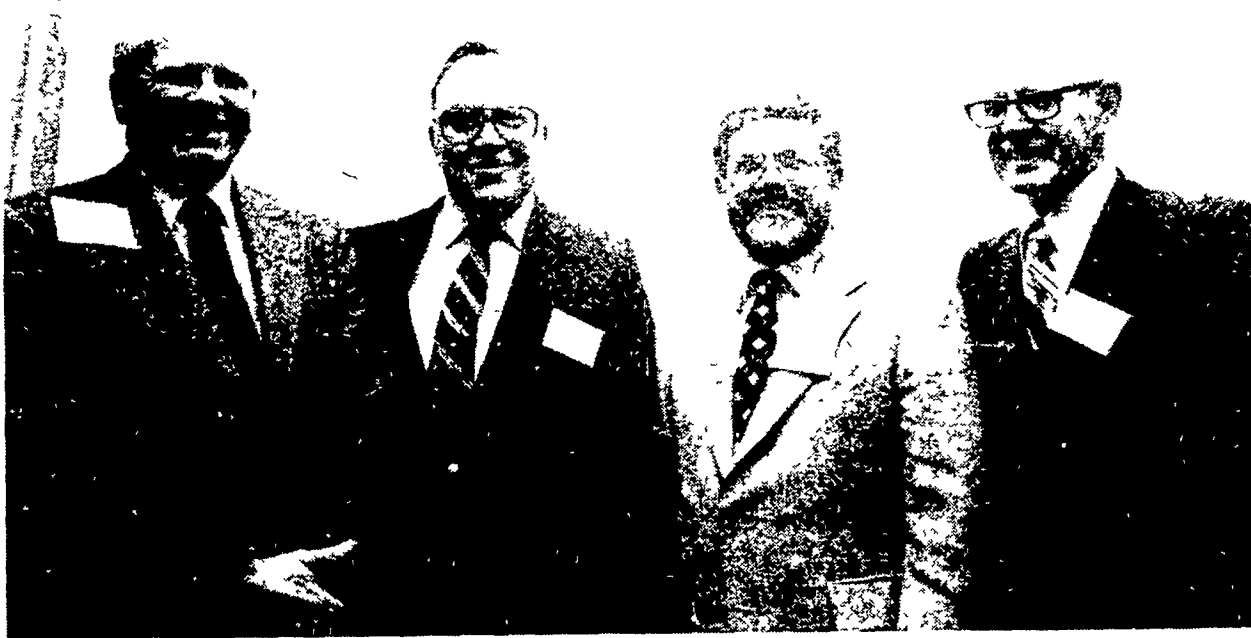
# Farm Organizations to support brucellosis fines, weed law

**BY CURT HARLER**  
**CAMP HILL** — The Council of Farm Organizations Monday resolved to support strict brucellosis sanctions, oppose land condemnation for scenic rivers, and push for noxious weed legislation. Resolutions by the Council pack great force on Capitol Hill because they require the

unanimous consent of the leaders of over 50 Pennsylvania farm groups before they are presented to lawmakers. The Council also made nominations for several state-wide positions including Penn State's Board of Trustees and Conservation District directors.

Blaming much of the current brucellosis problem in dairy animals on health record manipulation, the group approved a resolution calling for stiff fines for tampering with cattle ear tags or health charts. They asked all cattle sold at auction for beef or beef purposes be appropriately

identified and that all health charts include data on herd of origin and an endorsement from each handler or herd the animal was in while the chart was valid. They resolved that powers to condemn land under the Scenic River Act of 1972 be stricken



Officers of the Council of Farm Organizations elected Monday include, from left: President Don Parke, PennAg Industries; Vice President Robert Hodge, Chester County fruitgrower representing

the Horticulture Society; Secretary Treasurer John Hoffman, Pa. Poultry Federation; and Executive Secretary H. Carl Deibert, Pa. State Grange.



Former U.S. Deputy Secretary of Agriculture James Williams told the Council of Farm Organizations' annual legislative banquet the thing that pleased him most while working in Washington was being able to ask for a greater emphasis on ag research.

Department of Environmental Resources has the power to condemn for recreational use land along streams designated "wild or scenic."

The Council asked the Ag Department to identify multiflora rose and autumn olive as prohibited noxious weeds.

They also asked the Penn State extension service be subsidized by the government to develop a control problem for both of those plants.

It was noted during the meeting that the Game Commission has promised to stop planting multiflora rose. But both the Conservation Service and the Game Commission are planting autumn olive.

The Council called for a study of stray voltage, a problem which has been responsible for the deaths of many cattle drinking from waterers near improperly grounded electrical equipment.

Increased research on mushroom spawn produc-

tion was approved by the Council.

The Council went on record as supporting exploration of possibilities of formulating a new milk pricing formula.

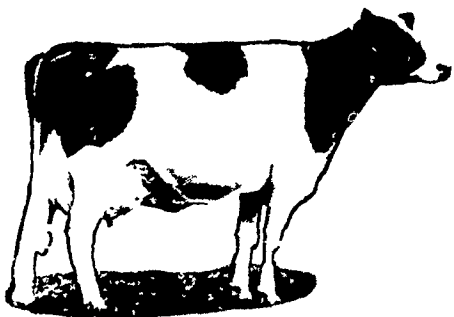
While stopping short of specifying any given program, the Council did say it feels the present pricing formula for Grade A milk — known as the Minnesota-Wisconsin system — has grown obsolete in today's market.

The Council noted its resolution is in agreement with the National Milk Producers Federation's feelings on the matter.

Citing problems caused by USDA's school lunch program guidelines to substitute other products for sugar, fat, and salt, the Council resolved to have USDA rescind such recommendations and continue to advocate the use of natural food products.

They urged the U.S. Congress release Abandoned Mine Reclamation Fund dollars to state agencies.

(Turn to Page A28)



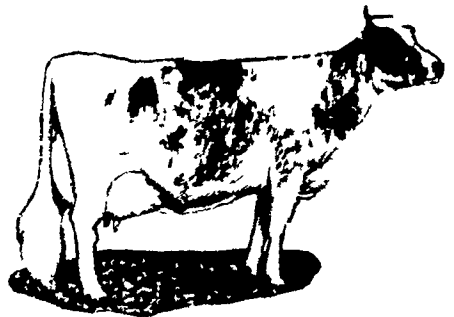
## WHATEVER HERD YOU HAVE

- HOLSTEIN     AYRSHIRE
- GUERNSEY     JERSEY

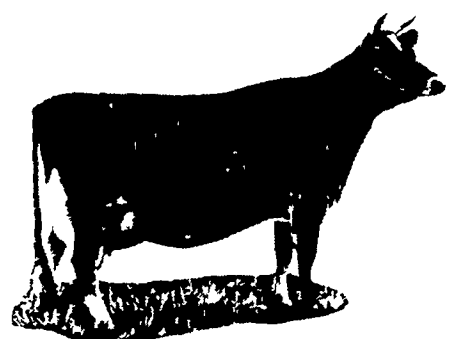


## FEED FLORIN

DAIRY FEEDS TO YOUR HERD TO MAKE MILK AND MONEY



For a healthy, highly productive herd, **FLORIN Enriched Dairy Feeds** are scientifically formulated, tested and proven. Feed it regularly, and see the results ... more milk from cows, more money for you.



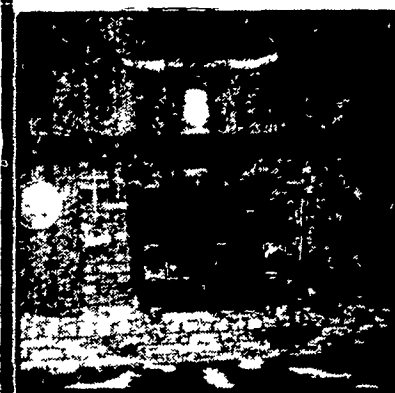
**WOLGEMUTH BROS., INC.**

MOUNT JOY, PA  
 PH: 717-653-1451



## WORRIED ABOUT FUELISH HEATING BILLS??

**SURDIAC Coal Burning Stoves will comfortably heat your entire home for approximately \$150-\$250 per heating season!!**



This stove remains unexcelled in:

- ★ BEAUTY
- ★ QUALITY
- ★ PERFORMANCE
- ★ MINIMAL CARE & MAINTENANCE
- ★ EFFICIENCY

**ELMER L. STOLTZFUS**

171 QUARRY ROAD, LEOLA, PA 17540

PH: 717-656-9041