

Delmarva poultrymen elect 1981 officers

GEORGETOWN, Del. — Robert K. Holland, mill production manager for Perdue, Inc., Salisbury Md., is the 1981 president of Delmarva Poultry Industry, Inc., trade association for Delmarva's huge broiler industry.

Other officers who will serve with Holland in 1981 are: Leon J. LaChance, president of Chesapeake Foods, Inc., Berlin, Md., first vice president; George A. Adkins, vice president, Townsend's, Inc., Millsboro, Del., second vice president, Paul V. Twining, Jr., president of Paul Twining Associates, Princess Anne, Md., immediate past president; Edward H. Ralph, executive secretary, Georgetown, Del.; and Isabelle Morris, secretary-treasurer, Georgetown, Del.

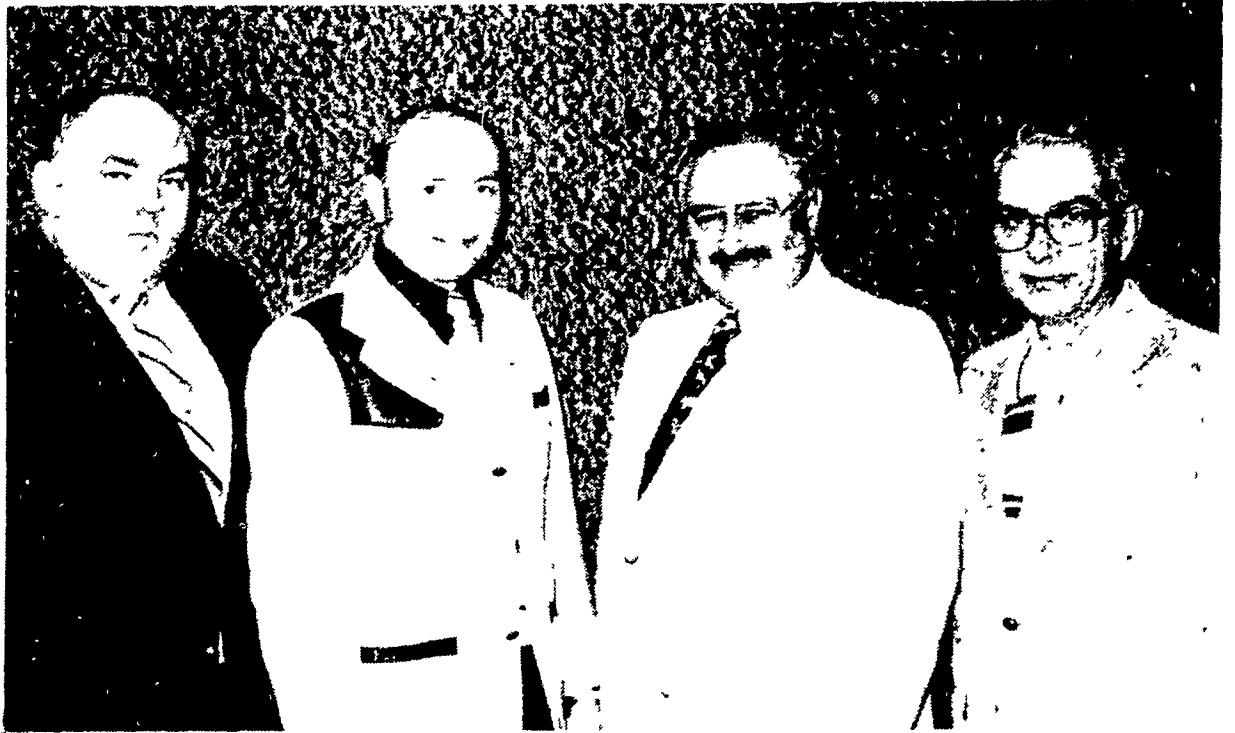
The DPI Board of Directors, in addition to the officers are, from Delaware: George G. Betton, Delaware Farm Credit, Georgetown; George Brinsfield, Red-White Mills, Delmar; Allen Burge, Frankford; Roland V. Cobb, Cobb Real Estate, Dagsboro; Everett

Conaway, Conaway Processing Equipment Co., Seaford.

Also elected are J. Frank Gordy, Sr., Georgetown; Bill Hancock, The Fox Co., Selbyville; Donald J. Lynch, Animal Health Sales Selbyville, Warren H. Mumford, Mumford Sheet Metal Works, Selbyville; David Van Hoose, Mountaire of Delmarva, Selbyville; Clark White, Cargill, Inc., Paramount Poultry, Frankford; and Preston E. Workman, Workman's, Inc., Georgetown.

From Maryland the directors are: Charles C. Allen, III, Allen Family Foods, Inc., Cordova; Terry Baker, Showell Farms, Inc., Showell; Richard S. Barr, Barr International, Inc., Salisbury; Roy V. Beauchamp, Chesapeake Foods, Inc., Berlin; Robert E. Blades, Tri-Gas & Oil Co., Federalsburg; Walter Brittingham, Jr., Buyers' Marketing Service, Salisbury; W. Simpson Dunahoe, Hebron

Other Maryland directors include Richard Eaton, Holly Farms, Show Hill Md.,



Delmarva Poultry Industry, Inc. officers for the year are, left to right: 1st Vice President - Leon J. LaChance, president of Chesapeake Foods, Inc., Berlin, Md.; Immediate Past President - Dr. Paul V. Twining, Jr., president of Paul Twining Associates,

Princess Anne, Md.; President - Robert K. Holland, mill production manager, Perdue, Inc., Salisbury, Md.; and 2nd Vice President - George A. Adkins, vice president, Townsend's, Inc., Millsboro, Del.

Paul E. Ferrier, G & M Sales of Delmarva, Inc., Salisbury, Mike Guerrieri,

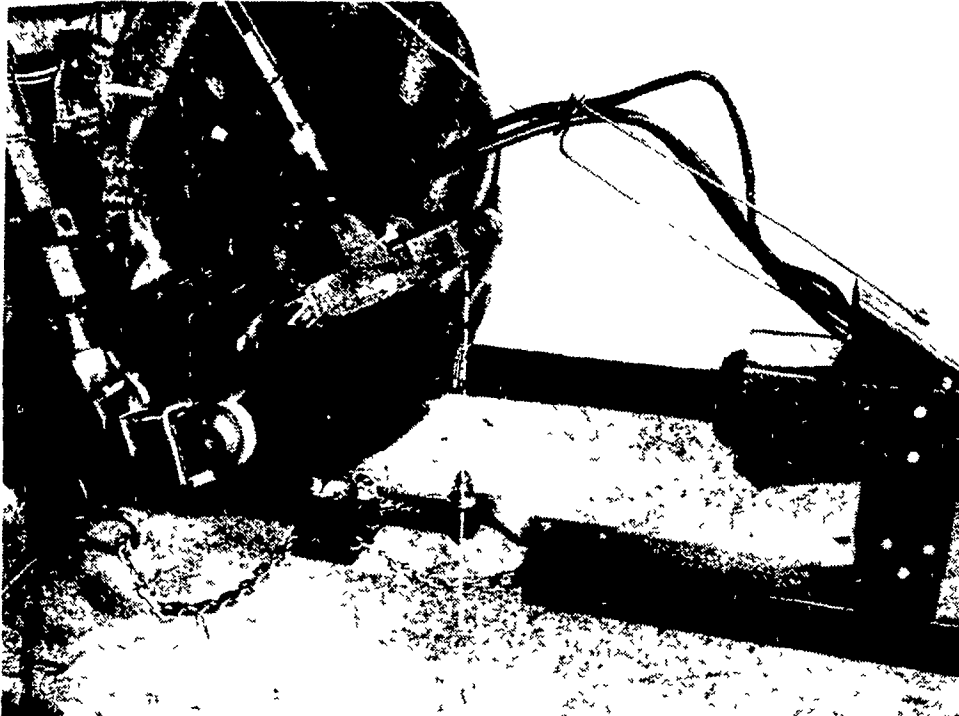
Showell Farms, Inc., Showell; Maurice M. Hancock, Mid City Poultry Co., Salisbury; Willis Hudson, Hudson Litter Service, Berlin; Harry J. Mitchell, Berlin; Edgar Morris, Parsonburg; Larry B. Phillips, W.F. Messick Ice Co., Salisbury; Don C. Ramsay, Westover

Also named are Thomas R. Shelton, Perdue Incorporated, Salisbury; Sewell Spedden, Perdue Incorporated, Salisbury; Donald W. Thayer, Perdue

Incorporated, Salisbury; Norris Twilley, Delmarva Power, Salisbury; Dr. David Wicker, Country Pride Foods Ltd., Easton; and,

Donald A. Wilber, Salisbury. From Virginia the lone director is Ted Simmons, Holly Farms, Temperanceville, Va.

Decal assures proper connection



A decal on all of IH's PTO-driven trailing implements helps promote safe operation and assure correct connection of the implement to the drawbar. Aligning the stripe on the decal with the tractor hitch pin simplifies making the correct connection to eliminate drive-line separation or bottoming. The decal, located on the PTO driveline, identifies the correct position of the drawbar hitch pin for the implement being connected. It is applicable with fixed or telescoping drawbars and hitch extenders, as well as implements with equalizer hitches.

Estate, transfer meetings slated

LANCASTER — Meetings dealing with laws on estate and farm transfers will be held at the Farm and Home Center.

A meeting on estate planning, wills and taxes will be held at 7:30 p.m. on Feb. 26. Speakers included Red Hughes, head of Penn State's

Farm Management Dept., Roland Freund, Penn State farm management specialist; and M. Elvin Byler, attorney.

The session on farm transfer arrangements will be held at 7:30 p.m. on March 12. Speakers will be Hughes and Freund.

Special Spring Truckload Sale WOVEN WIRE FLOORING - 5 GA.



LOWEST PRICES EVER
OFFERED - CASH & CARRY

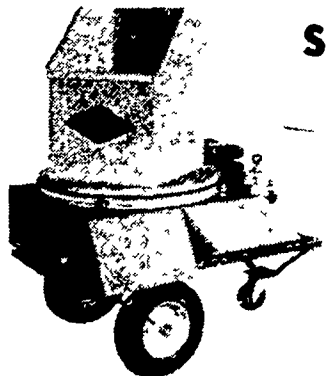
Swine Systems
FARMER BOY AG.

457 E. MAIN AVE., MYERSTOWN, PA 17601
1/2 Mile East of Myerstown PH: 717-866-7565

★ We specialize in complete swine systems, buildings, farrowing, nursery, fattening - open front or controlled environment

DISCOUNTS EXTENDED UNTIL FEBRUARY 14

Thank
You!



Due To The Tremendous
Response to Our Open House,
We're Extending The
Special Sale Price on the

Dynavent

BEDDING CHOPPER
Until February 14

Call or Come In For Demonstration

Products of
RYDER SUPPLY
CO.

S & S Plumbing
RD 1, Gap
717-768-3769