

# Dauphin County DHIA Monthly Report

December 1980

Dairy herd averages above 100 pounds fat are as follows:

OWNER	BREED	NO COWS	% DAYS IN MILK	LBS MILK	% FAT	LBS FAT
Catalpa Farms	H	109.4	86.3	49.0	3.9	1.92
Great View Farms	H	49.0	89.2	49.2	3.9	1.91
Earl Campbell	H	50.8	82.9	45.1	4.2	1.91
Restful Acres	H	70.3	87.0	47.2	3.9	1.86
Paul L. Crissinger	H	80.6	90.9	44.6	4.1	1.84
Robert Beach Jr	H	45.6	91.9	46.6	3.9	1.84
John Hertzler	H	71.1	92.2	45.9	4.0	1.82
Paul L. Crissinger	H	77.0	91.9	45.4	4.0	1.81
J. Richard Alwine	H	54.0	92.5	44.0	4.0	1.78
J. Melvin Brandt	H	68.0	89.8	45.1	3.9	1.77
Harold M. Nissley	H	42.6	88.5	44.8	3.9	1.76
Robert J. Schaffer	H	69.6	80.1	46.0	3.7	1.72
Wil lene Farms	H	55.0	79.7	44.2	3.9	1.71
Lytie Farms Inc	H	101.4	83.2	43.2	3.9	1.68
Lauden Farms	H	117.4	89.5	44.4	3.8	1.68
Earl E. Keefer	A	85.7	84.7	37.7	4.4	1.67
John Roy Book	H	50.6	95.6	45.1	3.7	1.67
James Leshner	H	43.3	95.6	41.2	4.0	1.65
Larry L. Boyer	H	23.9	82.5	42.6	3.9	1.65
Gary E. Miller	H	72.7	93.5	41.5	3.9	1.63
Stanley R. Long	H	75.6	85.9	40.9	4.0	1.62
Elwillo Farms	Mix	112.9	88.5	43.2	3.8	1.62
Roy C. Wilbert	H	22.3	95.5	46.7	3.4	1.57
Conewago Farms	H	83.3	87.1	37.6	4.1	1.56
Robert Oellig	H	35.6	91.2	37.0	4.1	1.52
Stoney Lawn Farms	H	91.4	74.1	38.4	3.9	1.51
Arthur Brandt	H	95.0	86.8	39.7	3.8	1.51
Wilmer Campbell	G	59.7	85.8	30.2	5.0	1.50
Conewago Farms	H	83.0	87.9	35.0	4.3	1.49
Isaac Newschwager	H	47.2	80.1	36.1	4.1	1.49
Larry L. Boyer	H	23.2	77.1	40.8	3.7	1.49

Dale F. Faust	H	34.8	79.5	37.2	4.0	1.49
Sher Mar Acres	H	41.8	86.7	40.6	3.6	1.47
Franklin Wagner	Mix	45.8	81.1	32.7	4.4	1.45
Arthur Brandt	H	95.8	82.3	37.4	3.9	1.45
Mahlon L. Lehman	H	52.3	84.2	36.6	3.9	1.44
Calvin B. Mauser	G	71.8	80.8	29.8	4.8	1.43
Lee R. Sweigard	H	24.5	89.6	36.9	3.9	1.43
Walter Schaffer	H	40.2	91.1	33.5	4.3	1.43
Homer Campbell	H	77.3	87.6	34.3	4.2	1.43
Donald Engle	H	73.5	73.8	34.2	4.1	1.40
Paul E. Clugston	H	80.4	80.5	33.7	4.1	1.39
Henry Keiter	H	44.0	80.0	35.0	3.9	1.38
Frank Wagner Jr	Mix	58.7	84.4	30.1	4.5	1.36
Roy M. Brubaker	H	56.0	71.2	36.0	3.7	1.34
Lebo Brothers	G	41.0	89.5	27.0	4.9	1.33
D. Miller Deemar	H	42.6	79.3	31.7	4.1	1.30
Bryncoed Farm	J	124.5	87.7	22.0	5.9	1.29
Floyd Feidt	Mix	75.0	88.0	34.1	3.8	1.29
Lee R. Sweigard	H	20.8	90.4	32.6	3.7	1.22
Raymond Bolack	H	67.0	95.1	31.8	3.8	1.21
Raymond Bolack	H	79.3	93.8	29.8	4.0	1.19
Robert N. Miller	G	16.0	70.6	22.5	4.6	1.03

## Lancaster Farming, Saturday, January 31, 1981—D13

Mandy	3.11	12,197	4.8	581
Lucille	3.0	10,981	4.7	521
Pricla	1.11	11,661	4.5	530
Robert J. Schaffer				
Keys	6.2	22,937	3.3	758
Ora	6.3	23,675	3.3	793
Lebo Brothers				
Ardel	7.6	12,143	4.3	525
Hattie	5.0	15,056	4.2	632
Rosette	3.1	11,092	5.1	562
Lee R. Sweigard				
Nell	6.4	14,171	3.6	512
Stoney Lawn Farms				
Dixie	8.0	19,313	4.0	781
Lytie Farms, Inc				
Rhoda	8.7	13,490	4.6	618
Dottie	7.7	20,185	3.8	774
Candy	8.0	22,340	3.2	713
Lynn	8.1	17,054	3.5	594
Bitzy	6.2	17,756	3.0	534
June	3.4	19,492	3.6	711
Sugar	2.3	11,646	4.4	512
Paul L. Crissinger				
Joyous	10.6	16,487	4.1	676
Rosie	9.5	16,097	3.7	599
Maude	8.4	19,495	3.3	646
Lori	8.3	17,428	3.7	653
Cindy	7.4	17,089	3.6	612
Trudy	5.5	18,305	3.5	643
Miracle	4.2	21,046	4.0	836
Marcia	3.5	18,861	3.7	699
Jill	2.3	18,236	3.7	666
Floyd Feidt				
Fawn	6.6	14,315	3.7	533
Mahlon L. Lehman				
Nettie	12.0	16,242	3.2	527
Sadie	7.4	18,411	3.6	654
Maggie	3.2	13,556	3.9	535
Walter Schaffer				
G29	2.1	15,033	3.6	546
ORA23	1.10	12,876	4.1	528
J. Melvin Brandt				
Lucy	10.11	19,677	4.5	886
Erna	4.4	13,659	3.9	529
Celia	3.8	18,469	3.5	651
Glady	3.3	16,591	3.7	608
Wilmer Campbell				
Paula	4.7	13,198	4.2	548
Bebe	3.4	13,631	4.6	630
Trish	2.0	11,383	4.8	546
Harold M. Nissley				
Viv	5.5	15,712	3.3	516
Goldie	3.11	18,517	3.4	638

(Turn to Page D14)

OWNER NAME OR NO	AGE	LBS MILK	% FAT	LBS FAT
305 day lactation records above 500 pounds fat included				
Bryncoed Farm Jersey				
46 W	8.2	11,623	4.9	565
95 O	7.4	9,681	5.7	549
130	5.8	12,448	5.0	619
193	5.3	10,279	5.6	577
194	5.3	11,059	5.2	578
299	3.6	9,142	5.5	501
John Hertzler				
Madge	6.5	15,800	3.4	532
Conewago Farms				
Judy	9.10	16,012	4.5	719
Anna	6.2	21,467	3.1	670
Trixie	6.2	18,470	4.4	820
Peg	3.0	14,037	3.8	534
Wandi	3.0	14,210	4.1	582
Gr 15 B	3.1	12,548	4.3	535
Gina	2.6	14,093	3.7	523
Karla	2.2	12,939	5.1	658
Marvel	2.3	13,860	4.4	603
Earl E. Keefer				
Verna	2.7	15,507	3.9	601
Mary	2.4	13,453	4.3	574
Aline	2.6	14,899	4.3	643
Calvin B. Mauser				
Esther	8.1	14,523	4.8	704
Libby	7.3	12,542	4.8	606
Reba	7.0	13,141	5.0	658
Nita	5.0	15,694	4.0	625
Maryle	4.1	12,513	5.1	638



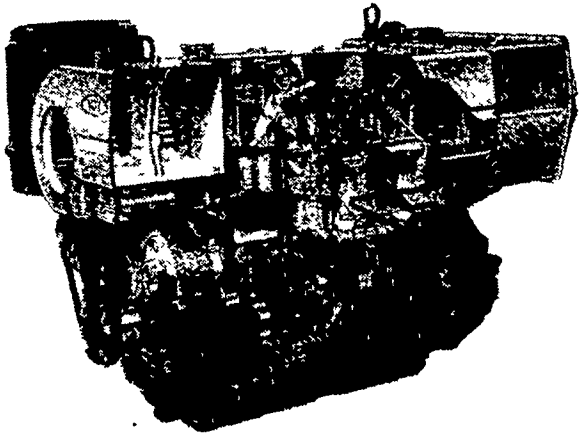
# REPOWER With VM DIESEL

Harvesters, Haybines, Tractors, Cornpickers, Balers, Hydraulic Systems, Corn Binders Choppers

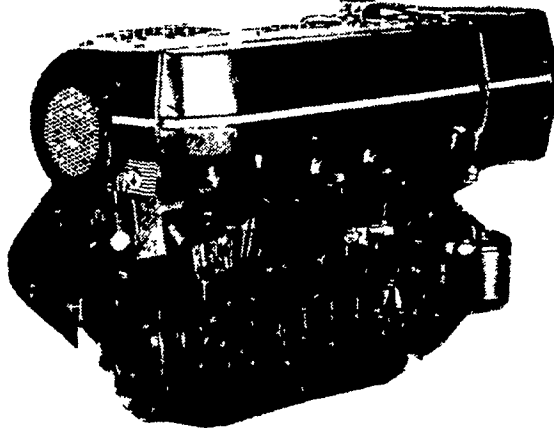


## All New HR Series

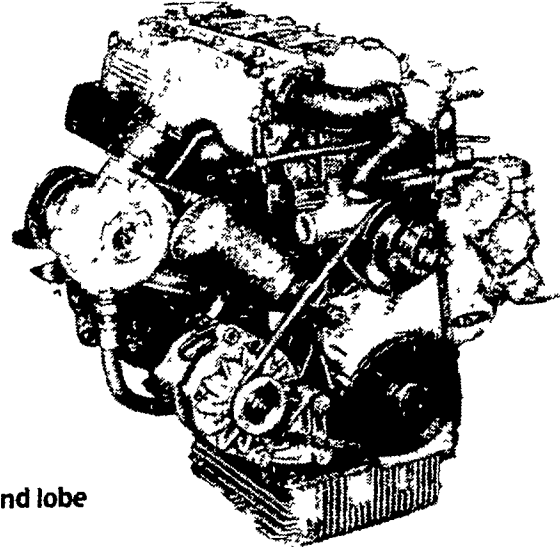
### OIL COOLED



### AIR COOLED



### WATER COOLED



- Integrally cast cylinders with inserted and removable wet type cylinder liners
- Light hypereutectic alloy pistons
- Extra-resistant steel connecting rods alloyed with special alloy head bearings
- Surface hardened steel crankshaft
- Drop-forged, casehardened and tempered steel camshaft
- Anti-friction cast-iron tappets alloyed
- Cast-iron tunnel type crankcase
- Rotary injection pump with mechanical governor

- Force-feed lubrication with built-in circuit and lobe type pump
  - Diaphragm pump feed
  - Oil and fuel filters with integral type element.
- Special structure and patented engine with consequent increases in performance and easier operation with low weight/output ratio low smoke emissions.
- Engine based on a design "modulus" formula which allows a maximum parts standardization and interchangeability.

### USED DIESELS

- SR 1 Lister
- SR 2 Lister
- SR 3 Lister
- HRS 6 Lister
- 1 Cylinder Deutz
- SV 195 - 14 H.P.
- 1051 VM, 20 H.P.
- DVA 1500 Slanzi

Ask For Horsepower Ranges Of Above  
THE "RIGHT FROM THE START" DIESEL ENGINE LINE  
FOR FAULTLESS PERFORMANCE

# QUEEN ROAD REFRIGERATION

Box 67, Intercourse, PA 17534  
Phone: John D. Weaver - 717-768-9006 or 768-7111  
or Answering Service - 717-354-4374

LR 1  
LISTER

24 HOUR  
SERVICE