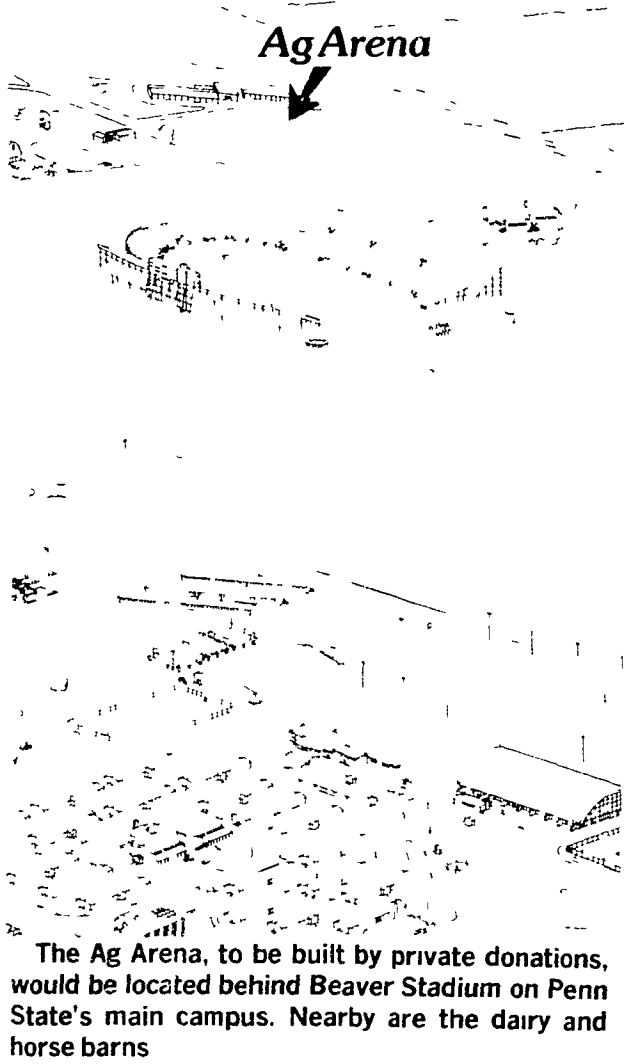


# Penn State seeks funds to build Ag Arena



The Ag Arena, to be built by private donations, would be located behind Beaver Stadium on Penn State's main campus. Nearby are the dairy and horse barns

**UNIVERSITY PARK** — Fund raising activities are underway to construct an Ag Arena at Penn State.

Citing the need for an Ag Arena to serve as a central spot for ag hill activities at Penn State's main campus, Agriculture College Dean James M Beattie said one of the current priorities is construction of an arena to serve as many of the needs of the College of Agriculture as possible.

Formerly, regular farm-oriented displays like the Dairy Exposition and Little International were held at the Ice Pavilion. But with the increased pressure on use of the facility, it has become more difficult to schedule an increased number of ag activities into the Pavilion.

The proposed Ag Arena would be located behind Beaver Stadium across from the horse barns.

As designed it would be 90 feet by 180 feet inside with seating for at least 600 people. There will be storage area, an office, restrooms.

The Arena will be suitable for handling cattle, horses, sheep and other livestock.

All funds for the program are going to be raised by private individuals,

specifically alumni, friends with a special interest in ag, and farm organizations.

Beattie said the need exists to provide a suitable area for activities of ag student clubs and organizations, agricultural organizations throughout Pennsylvania, unique classroom sessions currently held outside, short courses, conferences, and other functions which require arena-type space or provision for large group gatherings.

In addition livestock sales and other commercial ventures may be conducted in the proposed arena as long as their schedules mesh with

other activities.

Beattie said the College is asking for donations of any size or amount. Donors of gifts totalling \$300 or more will be recognized by being listed on a permanent plaque in the arena.

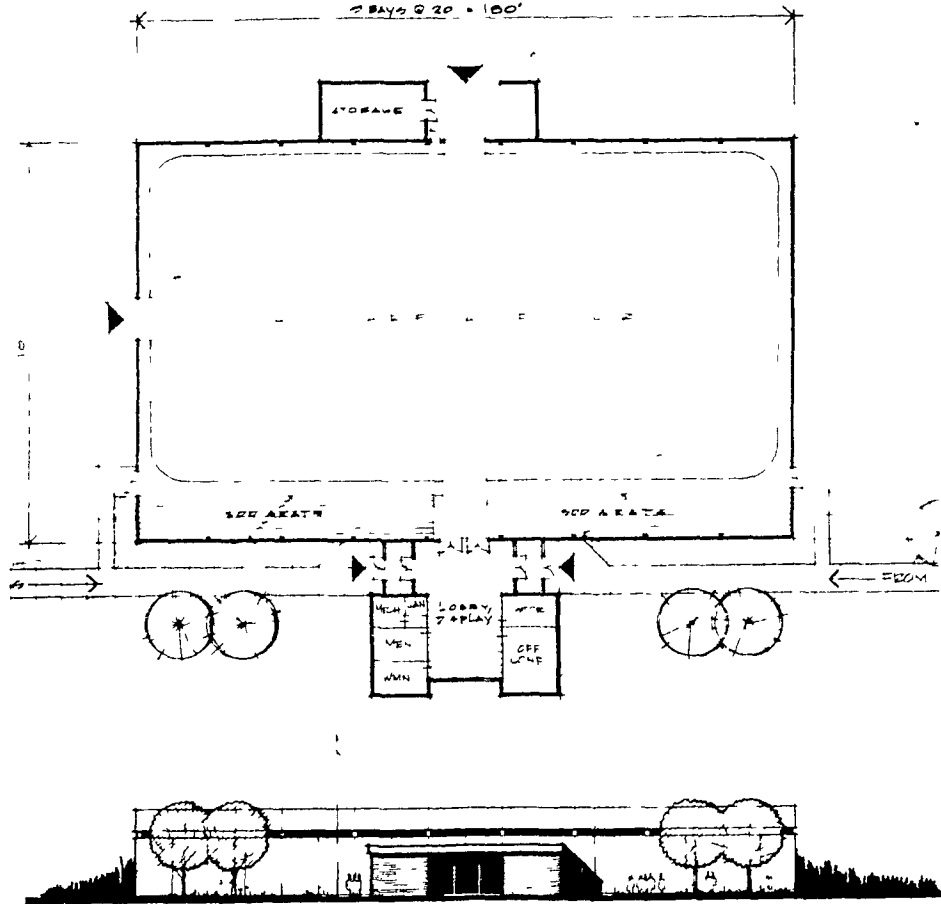
Fundraising Chairman is

Obie Snider, Imler, will try to gain for Penn State the recognition Singing Brook Farms has gotten for Holsteins.

The project is conducted by the Penn State Fund Council and endorsed by the Ag Alumni Society.

**IT'S MAGIC**  
How quickly  
You Get Results  
From Our  
Classifieds!

PHONE  
717-394-3047  
or 717-626-1164



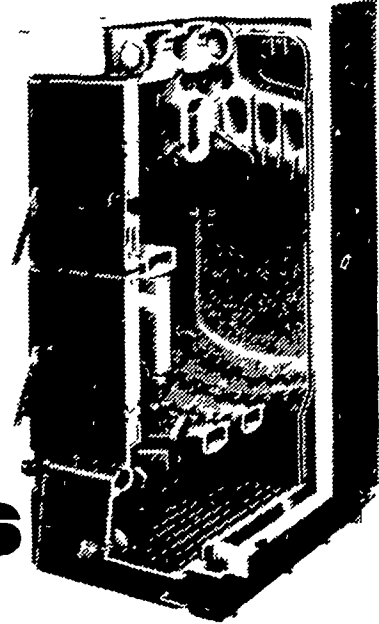
An architect's view of the proposed Ag Arena shows a 90 by 110 foot open arena floor for livestock shows or displays and seating for 600 visitors. The Arena would be suitable for all sorts of livestock.

# #1

## WOOD OR COAL

Find out why  
we're #1  
in the World!

- Adds on to your existing Hot Water Heating System
- Cast Iron Construction.
- Wet Base
- ASME Approved.
- Burns Wood or Coal.
- Converts to Oil or Gas.
- Automatic Control.



### Buderus

### HOWARD E. GROFF CO.

Fuel Oil, Gasoline, and Coal  
111 E. State Street, Quarryville, PA 17566  
Phone: 717-786-2166

**STOLTZFUS MEAT MARKET**  
RETAIL MEAT MARKET

- FRESH CUT BEEF & PORK
- FRESH EGGS RIGHT FROM THE FARM

★ OUR OWN COUNTRY CURED HAMS, BACON AND SWEET BOLOGNA  
Orders Taken For Beef Sides, Wrapped And Ready For Your Freezer

**Attention Farmers:**  
We Do Custom Beef Slaughtering

PH: 768-7166

Directions: 1 block east of Intercourse on Rt. 772  
Reg. Hours: Thurs. 9-5; Fri. 9-8; Sat. 8-5

**THE Webster LINE**  
THE WOODEN BODIES

- ★ 8 Ton Buggy-Spreads damp lime & fertilizer from 100 to 3000 lb.
- ★ Also uses grain wagon unloads in 6 minutes

**THE TENDER THAT WON THE EAST**

- ★ 5 ton fertilizer spreader
- ★ 5 - 8 - 10 ton fertilizer and grain tenders.

**S.L. WEBSTER & SONS, Inc.**  
Federalsburg, MD 21632  
301-754-5511  
Salesman - Donald O. King

**PUT YOUR ORDER IN NOW!**