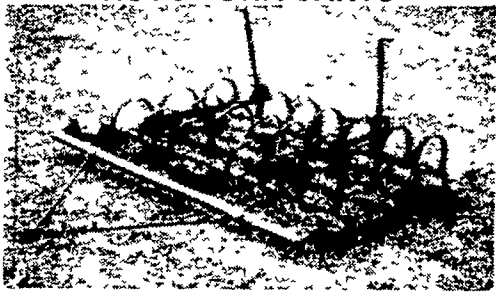


**LITTIAN BRITAIN  
SPRING HARROWS  
8' 9' 10' 12' Wide**

**AUTO TURN CARTS**



**Little Britain Welding Shop**  
RD #2 Box 218  
Nottingham, Pa. 19362

For Information on delivery call  
215-932-3141 before 6 AM

**FARM EQUIPMENT**

Selling parts off JD 60  
814 793 4293

Parting out NH 770  
chopper, 770 N2 C H 717  
R2 C H MF 44 & 43 corn  
heads NI 325 corn picker,  
IH 45 Vibra snank with  
rake, IH 550 5x16 plow  
Ph 215 926 5177

**SALE**

**DIAPHRAM PUMPS**

Pumps sandy water  
Industrial and Farm  
Waste Ideal for  
Hog Manure

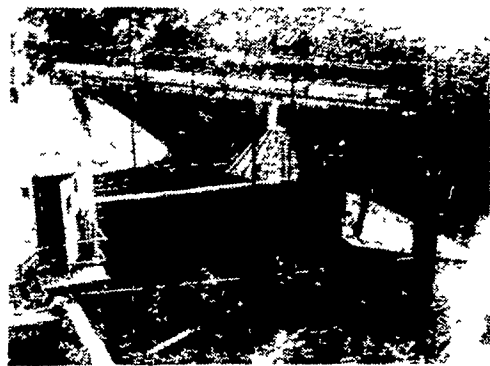
Also  
USED GORMAN RUPP  
solids handling pump  
with engine  
trailer optional

**ECCO, INC.**

4021 N 6th St  
Harrisburg, Pa 17110  
717-238-9423

**FARM EQUIPMENT**

**FOR SALE**



- Dryer, 15'x20', Bin 8' diameter
- NH super lift 26 Elec. Blower (not shown)

Both in good condition, will sell in  
entirety or parts.

Interested Parties  
please call  
Timothy Dinan  
215-375-5742

**FARM EQUIPMENT**

THREE 10 KW  
GENERATORS 2 recently  
removed from Poultry  
Houses 1 needs engine  
5 000 GALLON TANK  
TRAILER TREE TOPPER  
8' cutter bar used on  
peaches and small apples  
IRRIGATION PUMP with  
V8 Engine 4 6 8 IRRIGA  
TION PIPE  
Call 717/382 4878  
MAPLE LAWN FARMS

**USED**

PJ 3 Petter 30 hp  
w/ starter  
PJ 4 Petter 40 hp w  
starter & clutch  
19 hp Witte w/ starter  
clutch & alternator  
make offer  
SR 2 Lister w/ starter

**HOOVER DIESEL  
SERVICE**

Sales & Service  
Phone 717-656-6133

**FARM EQUIPMENT**

**TRACTOR &  
MOTOR REPAIRS**

Over 20 years ex  
perience with Ford trac  
tors and equipment.

Shop & Road Service  
Pickup and Delivery

**WALT STIVELY, JR.**

Springville Road  
Quarryville, RD3  
Phone 717-786-2252



**NEW EQUIPMENT  
SPECIAL PRICE ON  
WHITE TRACTORS**

2-130 20.8x38, Air  
2-105 Demo, 20 8x38, Air  
2-62 w/Loader  
2-35  
2-30 4 Wheel Drive  
8700 Combine  
9700 Combine, (Axial)

**NEW HARVESTERS**

Fox 6654 SP  
Fox 3310  
NI 708 Uni  
NI 709 Uni  
FQ 7650 Side Dump

Special Price  
On  
Artsway  
Dion  
Forage  
Wagons

**USED EQUIPMENT**  
7600 Field Queen 700  
hrs.

FQ Side Dump Wagon  
Gehl Side Dump Wagon  
Oliver 1855, New Paint,  
New Tires, Ex-  
cellent, 115 h p.  
Oliver 1850  
Oliver 77  
JD 2510 Gas, New Paint  
Bush Hog 10' Offset  
Rotary  
Brillion 9' Rotary  
8C & 12C Hydromac  
Skid Loaders  
IH 3200A Skid Loader  
NI 705 Uni w/3R Har-  
vester  
White 5400 6R Planter  
Oliver 5-16" Plow  
Fox 3000 Harvester  
JD 216 Fg. Wagon  
NI 325 2RN Picker  
NI 324 2RW Picker  
NI 279 Cut/ditioner  
NI 270 Cut/ditioner  
Athens 10' Pull Type  
Chisel  
SS9 Glencoe Soil Saver  
NI 710 Combine  
Fox Blower  
Lely 18' Double Wheel  
Rake  
Brillion 8R Hyd Wing  
Cultivator  
JD 8R Cultivator  
JD 12' Cultmulcher  
NI 730 4-Row Head  
NI 214 Spreader  
NI 8 Ton Spreader  
Hawk Bilt 2155 Roll Top  
Hawk Bilt 207 Tank  
Starline 3200 gal Super  
Tanker w/chisel  
injector  
Hesston Stack Hand 10  
Short Block GM 478 for  
705 Uni  
Better-Bilt Hi-pressure  
Vac Pump  
**STOLTZFUS  
FARM SERVICE**  
Cochranville, Pa.  
215-593-2407

**M & R  
EQUIPMENT, INC.**

New Park, PA  
4 mi. E. of Stewartstown, PA  
Ph: 717-993-2511  
Red Lion, York, Brogue, Loganville  
Ph 246-1972 Residence 301-452-8693  
after 6 P M



**TILLAGE SALE  
PRICES WILL NEVER BE LOWER!**

720 4 x 18" plow auto. reset - \$5750	510 3 x 16" plow, semi mtd. - \$2700
720 5 x 18" plow, auto. reset - \$6200	5500 7' chisel, mtd., Hi-clear, - \$1525
720 5 x 20" plow, auto. reset - \$6350	4500 Vibra Shank, 18 1/2' folding - \$2825
475 wing disc 17' 5", 22" blades - \$6700	4500 Vibra Shank 12 1/2' - \$1675

**LOOKING FOR A NEW TRACTOR??  
CHECK OUR INVENTORY AND PRICES!**

**FOR EXAMPLE:**

IH 484 DIESEL UTILITY, AUX VALVE, 15.4 G.P M. PUMP,  
14.9x28 RUBBER, WHEEL WTS.  
CURRENT LIST - \$12,780  
SALE PRICE \$10,450

3388 2 + 2 TRACTOR, CAB, AIR, AM-FM  
STEREO, 3 VALVES, 18 4 x 38 RUBBER, AUX.  
FUEL TANK, FULL 2 YEAR WARRANTY.

CURRENT LIST -	\$50,114
SALE PRICE -	\$36,500
IH REBATE -	\$1000
YOUR COST IS -	\$35,500

**REBATES AVAILABLE FOR OTHER MODELS  
— CALL FOR DETAILS**

**SPECIAL HAY & FORAGE**

IH 425 Baler w/trailer hitch - \$4800

**OPEN HOUSE  
COMING**

Feb. 16, 17 & 18

Discounts on all  
Parts, Displays  
demonstrations, etc.

WATCH FOR DETAILS

IH 815 COMBINE, DIESEL  
HYDRO, RECENT OVER-  
HAUL, 844 CORN HEAD,  
NICE  
WAIVER UNTIL 9-1-81

—PARTS SPECIAL—  
IH 462314R1 MOLDBOARD  
Reg. \$71.60  
NOW \$53.73

**USED EQUIPMENT**

IH 510 18x7 combination grain drill, DD openers, seeder, nice	JD 150 dump wagon
MF drill, combination, 15x7 very nice	JD 14 rotary mower
Moline drill, 16x7 combination	IH 56 blower, nice
550 plow - 5x16	JD Used Disc Harrows
990 Mow - Cond	401 spring tooth harrow, like new
New Idea 10 fert spreader, like new	JD 4010 gas, 3 pt very nice
470 wing disc 17 5	JD 2510 gas w/loader
IH 4130 skid loader	B 414 diesel, 3 pt, overhauled
Bobcat 610 skid loader	NI 213 spreader, new web
#10 New Idea picker, nice	NI 213 w/ 'd end gate, nice
	Super C w/cultivators
	IH 2400A tractor w/6 way blade ideal for snow removal

**ATTEND  
JOHN DEERE FARMING FRONTIERS**



1981

Plan to come to our Farming Frontiers 1981.  
Watch new-for- 81 films on self-leveling  
loaders for 4- and 6-cylinder John Deere  
Tractors, Time-Mizer Self-Propelled Forage  
Harvesters, balers, planters, cultivators,  
rotary cutters, Hydra-Push™ Spreader  
and more. View Furrow-on-Film subjects  
and a lively Buster Keaton flashback  
Door prizes will include a John Deere  
1/2-inch Drill. Be sure to come.

**THURSDAY, JANUARY 29, 1981**

10:30 AM & 7 PM

- Lunch Will Be Served At Noon
- Door Prizes

**10% Cash Discount**  
SPECIAL! On All John Deere  
Parts from Jan. 29  
until Feb. 5

**ABC GROFF, INC.**

OUR TRUCKS ARE RADIO CONTROLLED

STORE HOURS  
Mon Tues, Wed 7-5  
Thurs, Fri 7-9  
Sat 7-4  
Parts 717 354 4191  
Sales 717 354 4731  
Service 717 354-8004

Since 1890  
110 S Railroad Ave  
New Holland, PA 17557



**OPEN THURSDAY  
AND FRIDAY UNTIL 9 P.M.**