

PUBLIC AUCTION

**FARM EQUIPMENT;
BRED GILTS; CORN SILAGE;
HAY & PONY
THURSDAY, JANUARY 29
at 10 A.M.**

Between Topton & Fleetwood, next to the village of Bowers, Berks Co., Pa.

Farmall Super M diesel tractor on steel, Bob Cat #530 skid loader; Farmall M Tractor; MF 3 pt two bot. 14" roll over pl; 7' heavy duty off set disc; 10' roller harrow; 9' single roll cultipacker; Ontario 16 disc grain drill on steel, Stauffer two row tobacco planter w/poly tank; Badger grinder mixer, (2) NH 818 forage harvesters one & two row c heads; JD #5 mower; MF #81 haybine; MF #10 baler; 32' King Wyse bale elev, MF rolo-bar rake, five wheel hay & fodder rake, JD four r. f. mt. culti, MC 234 two r mt. c husker; MC 2 MH two r mt c husker; two wheel trailer; Wehr pull type road grader, small portable tree sprayer, Smidley 6 & 8 hole self feeders; pride of the farm self feeder; hog shelter & troughs; Wright wood cutting saw, Fairbanks 1000 lbs. platform scale, Papec forage knife sharpener; 12 ton metal feed bin, lg. drill press, lumber (some new), railroad ties 7' to 20' length; 24' steel railroad rail, 12' x 12' ci pipe, cement blocks, steel window frames, used galvanized tin, tobacco laths, shears, spears & bale boxes; (2) iron horse shoe chairs; some new horse shoes, two horse body wagon, two horse flat wagon, one horse sleigh, two seater family carriage w/brakes & lights; four wheel pony spring wagon; (2) western saddles, Shetland pony due in Feb, rides & drives; blacksmith tools, ci kettle, (6) bred two way cross gilts; approx. 30 ton mixed Clover Timothy hay to be sold by the bale, 2 ton straw, 40 bu. clover seed, approx 220 ton corn silage;

HOUSEHOLD GOODS: Prizer coal & wood stove kit, range, stove pipe heat saver; Caloric gas kit range; china closet (sliding drs), (2) one gal. butter churns one is elec.; 9'x12'-12'x15' rugs, Singer treadle sewing machine, cane seat rocker, crib & mattress, plus other items not mentioned.

Terms: Cash or check
Refreshments served

Reason for sale-Farm sold, moving out of state
Ordered by
ALLEN S. NOLT

Conducted by
Ralph W. Zettlemoyer Auction Co. Inc.
(215) 395-8084

Public Sales Register

Closing Date - Monday, 5 00 P M
of each week's publication

SAT MAR 7 - Eastern Shore Showcase Sale featuring 50 Registered Holstein calves and heifers at Hunters Sale Barn, Rising Sun, MD Co Chairman Ben Amoss and Bob Knutsen, for more info write Bob Knutsen Rising Sun, MD 21911

SAT MAR 7 10 30 A M Public Sale of Full Line of Farm Equipment for Raymond Maring, 2118 Gillis Rd., Woodbine, MD Located 1 1/2 miles west of Rt 94, or 2 1/2 miles east of Rt 27 Ridgely and Streaker Auctioneers 301 489 4637

SAT MAR 7 11 00 A M Public Sale of Stamen Heagy Estate Located North Lebanon

Twp on Rt 72 in Ebenezer, turn east on Water St, Follow Water St to signs Allen L Bishop Executor Ralph B Heisey Auctioneer

TUES MAR 10 9 A M Public Sale of Farm Machinery and Shop Tools located 1 1/2 miles North of Fivepointville, 2 miles West of Bowmansville, 1/2 mile off 897 along Woodlyn Drive Take Chestnut Hill Road off 897, to Woodlyn Drive, turn right first farm on left Terms by Leonard E Horning Frank and Paul Snyder, Auctioneers

WED MAR 11 Nealy Bros Sale of Farm Equip on the farm located one mile Southwest of Newville, Pa along Rte

PUBLIC SALE

**STAMEN HEAGY ESTATE
23 ACRE FARM, FARM
MACHINERY & HOUSEHOLD
SATURDAY, MARCH 7
11:00 A.M.**

Location: North Lebanon Twp. on Rt. 72 in Ebenezer, turn east on Water St. Follow Water St. to signs.

Most soil on farm is tillable. Has a stream of water flowing through it 35' x 46' bank barn - 30' x 50' cattle shed. 2 1/2 story 6 room house with aluminum siding and metal roof. Has its own private well, elec. water system, running water in the house.

At same time farm machinery and household will be sold. Complete listing at a later date.

TERMS ON PROPERTY: 10% down, balance in 45 days. For inspection of property call 274-1709 (area code 717)

Executor,
ALLEN L. BISHOP
Weiss, Weiss, & Weiss,
Attorneys
717-273-1661

Ralph B. Heisey, auctioneer

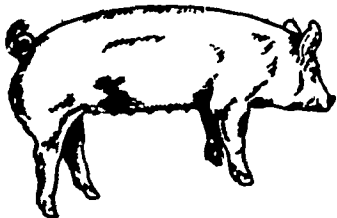
HOUVALE FARMS

6th Yorkshire Production Sale

FEBRUARY 20, 1981.
SALE 1:00 P.M.

LOCATION: Lebanon Area Fairgrounds, Evergreen Road and Cornwall Road, Rocherty Road East off of Route 72, Lebanon, Pa.
Buy from one breeder at this sale and be confident.

YORKSHIRES



SELLING APPROX.

**50 BRED GILTS
20 OPEN GILTS
20 BOARS**

Most boars and gilts selling are unrelated to other Yorkshires in the East Bred Gilts are hand mated to fit your farrowing schedule All animals will be bled and negative to Pseudorabies and Brucellosis so they can go into any state on sale day.
For Catalogue, Write to:

ELWOOD E. HOUSER
2150 QUENTIN RD., LEBANON, PA. 17042
Phone (717) 272-5798 or (717) 273-2921

**THIS IS INVESTMENT DAY
AUCTIONEER: COL. HARRY BACHMAN**

533 Kaipri W Horst Auctioneer

THURS MAR 12 Monroe Crider Holstein Heifer and Farm Equip Dispersal near Scotland, Franklin Co., Pa along White Church Rd, Kenneth Upperman and Ralph Horst Auctioneers

THURS MAR 12 Great Expectations Sale Chapter 4 Held at the Guernsey Sale Barn, Lancaster, PA R Austin Backus, Inc Sale Managers and Auctioneers

FRI MARCH 13 10 A M Special Draft Horses and Mules Sale at New Holland Sales Stables

FRI MAR 13 - 9 A M Machinery Sale at the Keister's Middleburg Auction Sales, Inc Rt 522, 3 miles East of Middleburg, 5 miles West of Selinsgrove, Pa Don & Walt Keister, Owners Ray Long & Dave Imes Auctioneers

SAT MAR 14 8 30 A M 13th Annual Sale of the Gordonville Fire Co Sale of Household Goods, Antiques, Livestock & Farm Machinery Terms by Gordonville Fire Co Local Auctioneers

SAT MAR 14 9 00 A M Public Sale of 116 acre Dauphin Co steer farm farm equipment and household goods Located just off Rt 283 along School House Rd, Midletown, PA Sale by J Allen Dehmer Raymond Miller and Rufus Geib Auctioneers

SAT MARCH 14 10 30 A M Public Auction of 2 Tractors & a Line of Farm Machinery Located in Huntingdon Co, 12 miles South of Huntingdon, Pa of 1/2 mile North of Marklesburg on Rt 26 Sale by Scott Donelson, James Creek, Pa Auctioneer Mark Glick

SAT MAR 14 2 00 P M Public Sale of 1 Story Home Located along Rt 625 close to Centre Church midway between Bowmansville and Terre Hill Lancaster Co Marvin Good Exec for Elizabeth Good Estate Leroy S Horst and Paul W Horst Auctioneers

SAT MAR 14 @ 10 A M Farm Machinery & Dairy Equip Located 1 mile north of Rt 254 at Limestoneville, which is between Milton & Washingtonville, Pa Montour Co Watch for sale signs, Terms by Titus & Susanna Snader Elton & Alvin Horning Auctioneers. HORNING FARM AGENCY INC

SAT MARCH 14 9 30 A M Public Auction of General Farm Equipment Vegetable Growing Equipment, Irrigation System and Household Items located 5 miles North of Shippensburg off Rt 696, between Shippensburg and Newburg, Cumberland Co Watch for Auction Arrows Terms by Paul L Nuschke, John B Niesley Realtor Auctioneer

SAT MAR 14 9 00 A M Public Sale of Farm Equip

ment and Household Goods Located Rt 645 north of Myerstown, PA Henry Brubaker owner Sylvan Witmer Auctioneer

SAT MAR 14 Public Sale of Household Goods and Antiques Located at 973 Rettew Mill Road Ephrata, PA Howard J Kreider, Owner John E & Paul E Martin, Auctioneers

TUES MAR 17 10 00 A M Public Sale of 65 Head Holsteins, some dairy equipment and a good line of farm machinery Located in Centre Co, 1 1/2 mile NW of Woodward, PA turn north off Rt 45 onto Cemetery Rd at the West end of Woodward Mr & Mrs Clayton Hettinger, Box 65 Woodward PA Owners Mark Glick Auctioneer

WED MAR 18 9 A M Consignment Sale by David H Good located 1/2 mile North of Route 23 on North Maple Ave in Leola, Lancaster Co, Pa Watch for sale signs F Snyder, R Martin C Wolgemuth, J Fry and L Horst Auctioneer

THURS MARCH 19 10 A M Public Auction of Farm Machinery & Some Hog Equipment Located in Centre Co, 1 1/2 miles East of Centre Hall, Pa on Manor Rd, about halfway between Rts 45 & 192 Sale by Mr & Mrs Dean W Fetterof, R D 2, Centre Hall, Pa Auctioneer Mark Glick

THURS MAR 19 Monthly Cow Sale at the Melvin Kolb, Inc Sales Barn, 11342 Cragerstown Rd., Woodsboro, Md 21798 Thomas Miller, Sales Manager, Robert Mullendore, Auctioneer

FRI MAR 20 6 30 P M Consignment of Feeder Cattle & Feeder Pigs at Keister's Middleburg Auction Sales, Inc Rt 522 3 miles East of Middleburg, 5 miles West of Selinsgrove, Pa Don & Walt Keister, Owners Ray Long & Dave Imes Auctioneers

FRI MAR 20 10 A M Large Farm Machinery Corn Drying Equipment and Trucks Public Auction for Habecker and Carper 2401 Spring Valley Road Lancaster, Pa just off Rohrerstown Exit, Route 30 Sale conducted by J Omar Landis Auction Service, J Omar Landis and Jay M Witman, Auctioneers

SAT MAR 21 11 00 A M Special Horse Sale at the Belleville Livestock Market, Draft Horses drivers mules

SAT MAR 21 1 00 P M Sale by PA Yorkshire Coop, Bred gilts, open gilts and boars, held at the Lebanon Fair Grounds, Leon Arnold 717 273-5880

SAT MARCH 21 Sale of Farm Machinery, Site Equipment and Tools Off Rt 897 at Gehman School Terms by Eli Martin Leroy S and Paul W Horst, Auctioneers

SAT MAR 21 Saxby Implement Corp Annual Sale of Farm Equip Near Mendon N.Y., Ralph W Horst and Blaine Rentzel Auctioneers

SAT MAR 21 Public Sale of Power Farm Equipment, Antiques, Tools and Personal Property, Located 3 miles east of Oxford, PA E Nott Twp Rt 4721 1 mile northwest of McComseys Store (Hickory Hill) Sale by Charles H & Lois L Taylor Harry W Whiteside Auctioneer

SAT MAR 21 9 00 A M Spring Sale at Kempton Community Center Kempton PA Northern Berks Co Sale of Farm Equipment

THURS MAR 26 9 00 A M Annual Spring Public Sale at the Mel Stoltzfus Farm Located in Centre Co about 1/2 mile west of Rebersburg PA Glick Gibboney and Snyder

CORTLAND GUERNSEY SALE SATURDAY, FEBRUARY 7 12:30 P.M.

including Complete Dispersal of dairy of AUTUMN VIEW FARM, Westfield, N.Y. owned by Robert D. Warr, Jr.

Dispersal includes 36 head including: 19 Cows, 3 Bred Heifers, 6 Open heifers and 5 calves plus 3 bulls There are six sired by Housleys Dari Fayvor, 4 by McDonalds Nance Nobleman, and other top A I Sires

This dairy is from top breeding and will respond to good care

Other consignments include
Stewart Farms Choice Marble - by Kellogg Minnies Choice due Feb 8th to Cyclone Chestnut Graders Fairy - a Bred Heifer by McDonalds Dairmost Trader due sale time to Piney Lane Powerhouse Celeste D Lucretia - by Western Glow Dairmost due Feb 25th to CHOICE Bermat Choices Mercy - by Kellogg Minnies Choice due Feb 25th to Cyclone Domino June of Milroy - by Lyrene Top Domino due Feb 24 to Quail Roost Dari Midas Appleton Farms H Moira-Bred Heifer by Welcome Flashes Hollirex - due in April Deer Luck Julie - Bred Heifer by McDonalds Nance Nobleman due Feb. 9th to Super Star J S C Royal Judy - Bred Heifer by McDonalds Prince Royal due in April WIGHTMAN BARTS BECKY ANN - Bred Heifer by Grandview Wistars Bart - due Feb 10th Wightman Fargo Karen - Bred Heifer by Lyrene Fargo due Feb 22 to Bart Appleton Farms H J C Linell - a Champion with 14196# milk due March 3rd. Greystone Corporal Nell - a CORPORAL with 13802 milk due Feb 21 to PRIDE Wabanaki Her P V P Patsi - by Peaceful Valley Hercules due March 3rd Greystone Titans Willow - by McDonalds Dairmost Titan due March 3 to Telear McDonalds Marvel Ursa - by McDonalds Dairmost Marvel out of a daughter of McDonalds Dairmost KITTY*EX-due March 15 to McDonalds Prince Royal

Sale to be held at CORTLAND SALES PAVILION, Cortland, N Y - just off Interstate 81 - exit 10 - toward McGraw on Rt 41

Tested for Interstate
Light Lunch and Trucking available
Mail and Phone Bids accepted
Sale Managed by

CORTLAND GUERNSEY SALES
Barn Phone 607-836-6661
A.V ZOGG JR. - Auctioneer

ED TOWNSEND - Catalogs
4429 Sunset Drive, Syracuse, N Y 13215
Tel. 315-492-2578

H Jos Pendergast - Pedigrees
Star Route
Cobieskill, N.Y.
Tel 518-234-7317
Wm Cochran - Fieldman