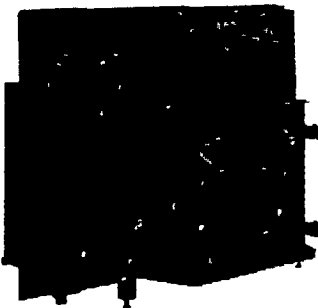


**KEEP OUR FORESTS
SAFE FROM FIRE**



**FACTORY AUTHORIZED
SALE!
25% to 30% OFF**



**Fireplace
Insert**

Easily fits your existing fireplace! Comes complete with blower for even greater efficiency! Your choice of two sizes! Large size heats up to 2500 sq ft.

Regular Price \$739
Discount \$214

\$525

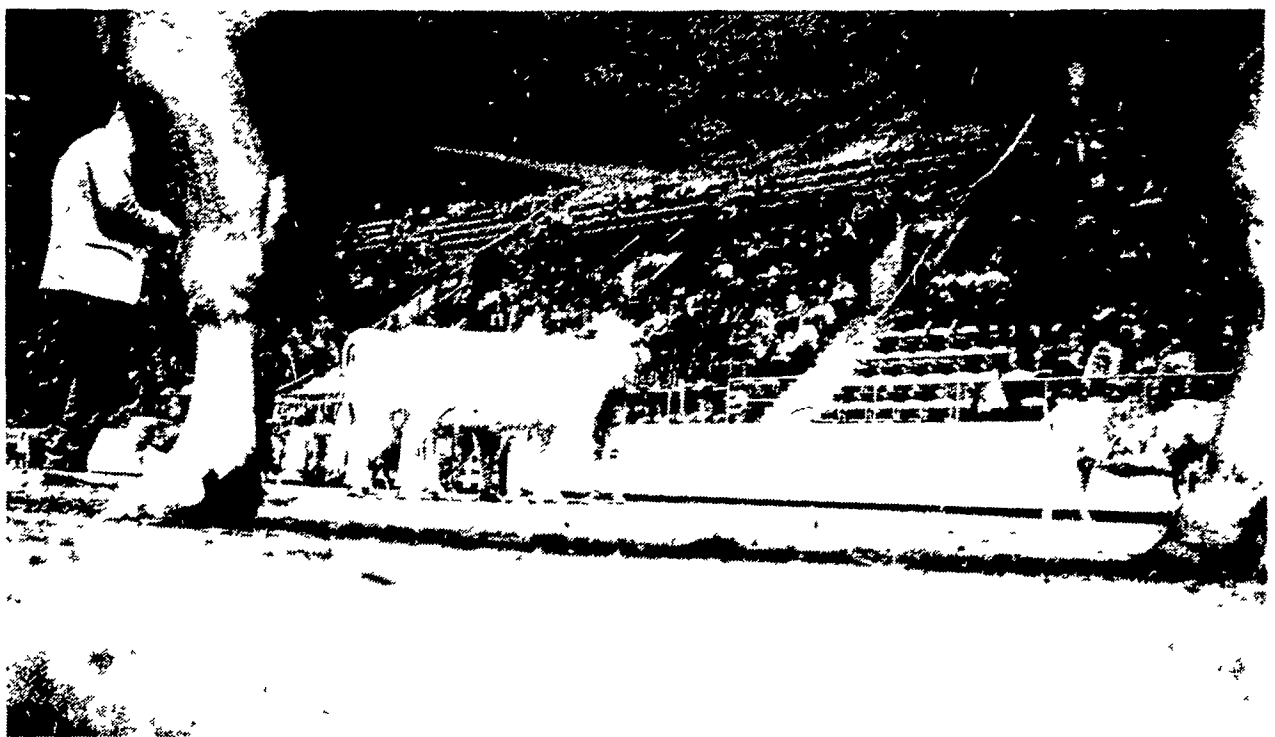
Convert your existing fireplace to efficient woodstove heat today!

CHESTER B. NOLT

30 S. Hershey Ave. (Bareville) Leola, Pa. 17540

PHONE (717) 656-6898

Hours; Mon. & Tues. By Appointment
Wed., Thurs., Fri. 10 to 8; Sat. 10 to 4



Here's a shovel's eye view of dairy competition at the Farm Show.

Saving support program Farm Bureau's goal

NEW ORLEANS, La — "The question is not 75, 80 or 90 percent of parity, but rather how to save the present dairy price support program," Hollis Hatfield, director of the dairy department of the American Farm Bureau Federation, said last week at the dairy conference of the organization's 62nd annual meeting in New Orleans.

The current dairy price support program expires in September and opposition to the program is increasing from consumer groups and the food industry complex. Hatfield pointed to

government purchases of 8.2 billion pounds (milk equivalent), the largest since 1962, with a record dollar value of \$1.3 billion as one of the reasons that the program is in jeopardy.

Dairymen have increased milk production to a record 128 billion pounds while demand for the product has decreased.

"Why should cow numbers increase when demand is decreasing?" Hatfield asked.

Currently, cow numbers are up with 1980 being the first time in 27 years that the dairy industry has been

confronted with an increase in cow numbers.

Hatfield advocated modifying the present program to tie the support level to Commodity Credit Corporation purchases. Such modification would put flexibility back into the program, according to the

dairy leader.

"It would provide more pronounced signals to dairymen for production adjustments — up or down. It would also indicate producer and industry responsibility and enhance the credibility of the program," he said.



**READ
LANCASTER FARMING
FOR COMPLETE
AND UP-TO-DATE
MARKET REPORTS**



**ASK ABOUT OUR EXCITING WINTER THROUGH
SPRING NO INTEREST FREE FINANCE PROGRAMS**

- CONVENIENT FINANCING
- LEASING
- RENTALS
- PARTS SERVICE
- RECONDITIONED TRACTORS

A MODEL SIZE TO FIT ANY OPERATION

See or call us now



C. & P. FULTZ EQUIP.
RD 1,
Spring Mills, PA
(814) 422-8805

EDWARDS FARM EQUIP.
291 West Moorestown Road
(Rt 512 Clearfield)
Nazareth, PA
(215) 759-0240

**E. W. BILEWICZ
EQUIP., INC.**
Elmer Rd., Richwood NJ
(609) 881-2692

C. H. WALTZ SONS, INC.
RD1, Cogan Station, PA
(717) 435 2921

**ZIMMERMAN'S
FARM SERVICE**
Bethel, PA
(717) 933-4114

A. L. HERR & BRO.
312 Park Ave
Quarryville, PA
(717) 786-3521

STOFFER BROS., INC.
1066 Lincoln Way West
Chambersburg, PA
(717) 263-8424

PEOPLES SALES & SERVICE
Oakland Mills, PA
(717) 463 2735

BINKLEY & HURST BROS.
133 Rothsville Station Rd
Lititz PA
(717) 626-4705

PAUL SHOVER'S, INC.
35 East Willow St
Carlisle, PA
(717) 243 2686

CLAIR J. MYERS
Lake Road R1
Thomasville, PA
(717) 259-0453

T & T SUPPLY, INC.
RD5, Danville, PA
(717) 275-0927
2 mi S off Rte 54