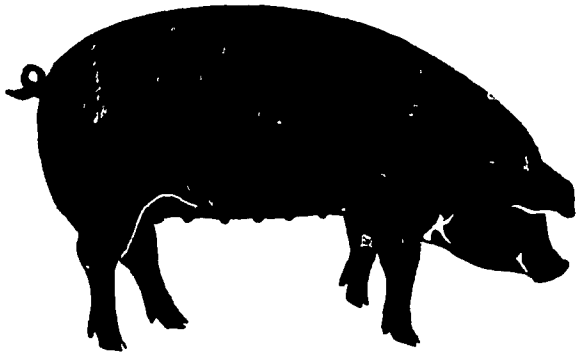


DUROC BRED GILT SHOW AND SALE



Held at the Farm Show Building,
Harrisburg, PA.

Show - January 10 - 10:00 A.M.

Sale - January 12 - 2:30 P.M.

For Catalogs Contact

Ken Fetterolf

RD 2 Centre Hall, PA 16828
814-364-9901

Public Sales Register

Closing Date - Monday, 5:00 P.M.
of each week's publication

JAN 11 12 PA will Breed Bred Gilt Sale Held at the Farm Show Building, Harrisburg, PA. Harry Bachman Auctioneer PA Co op Swine Breeders Assn Sponsors

Maryland Farm Woodsboro, Md Tom Miller, Manager

THURS JAN 15 10:00 A.M. Public Sale of Farm Equipment, Household

MON JAN 12 2 P.M. Danville Livestock Market, cattle and hog auction. Located Old Route 11, Danville, PA. Melvin M. Lehman, owner

TUES JAN 13 50 Yorkshire bred gilts at sale by PA Yorkshire club Held at the PA Farm Show building 1:00 P.M. For information Leon L. Arnold 717 273 5880

TUES JAN 13 12:00 P.M. Jesse Gardner Hillview Farms Dairy Dispersal. Located just off Union Valley Battle Creek Rd., 4 miles northwest of Rome, PA to west off PA Rt 187 on Union Valley Rd at boro limits. Jesse Gardner Owner Howard Visscher, Glenn Shores and Roy Hottle Auctioneers

THURS JAN 15 12:00 Noon Monthly Cow Sale at Melvin Kolb Inc

Goods, Engines, Model A Ford Trucks, Antiques and Guns. Located 5 miles west of Allentown, 1 mile north of Trexlertown, turn off onto Ruppville Chapmans Rd for 1/4 mile to farm, Lehigh Co., PA. Sale for Victor Kunkel and the Former Floyd Snyder Estate. Conducted by Ralph W. Zettlemoyer Auction Co.

FRI JAN 16 - 12:00 P.M. Public Sale of Farm Equipment. Located 7 miles north of Fogelsville, 1 mile south of Pleasant Corners, just off Rt 100, turn at the Squaw Mt Ranch sign to farm, Lehigh Co., PA. Sale by James & Faye Schroyer. Conducted by Ralph W. Zettlemoyer Auction Co.

FRI JAN 16 5:30 P.M. Gap Auction Antiques and Household Goods sold at every auction. Located off Rt 41, Lancaster Turkey Hill Mint Market, cross RR bridge, Ira Stoltzfus & Son, Auctioneers

SAT JAN 17 10:00 A.M. Public Sale of Valuable Antiques, Held at the Guernsey Sales Pavilion on Rt 30, 6 miles east of Lancaster, PA. Sale by Elmer H. Buckwalter. Ira Stoltzfus and Son and Jay Leary Auctioneers

SAT JAN 17 6:30 P.M. Danville Livestock Market, horse sale. Located Old Route 11, Danville, PA. Melvin M. Lehman, owner

TUES JAN 20 6 P.M. Farmersville Auction. In Farmersville, 3 mi East of Brownstown. Lancaster County, PA. John J. Rutt, Auctioneer

TUES JAN 20 10:00 A.M. Public Sale of Vehicles, Machinery and Equipment. Located 2025 Horseshoe Rd., Lancaster, PA 3 miles east of Lancaster, just north of Rt 340 Claude Smith and V. Ronald Smith Auctioneers. James Leonard Trustee in Bankruptcy for Thomas Farm Systems Inc.

WED JAN 21 9 A.M. Consignment Sale by David H. Good located 1/2 mile North of Route 23 on North Maple Ave in Leola, Lancaster Co., Pa. Watch for sale signs. F. Snyder, R. Martin, C. Wolgemuth, J. Fry and L. Horst, Auctioneer

THURS JAN 22 Horst's Machinery Sale, one mile East of Marion, Pa 17235. Ralph W. Horst, Manager

THURS JAN 22 10:30 A.M. Public Auction of Valuable Real Estate. Modern Farm Machinery and Trucks. To be held on the premises at RD 1 Annville, North Londonderry Twp., Lebanon Co., PA. Turn north onto Forge Road off Rt 322 at traffic light at east end of Camp bell and continue approx 1 mile and turn right onto Airport Rd and continue approx 1 mile to property on right or turn onto first road left off Route 422 past Bethlehem office west of Annville and continue approx 3 miles to sale site on left. Conditions by Eckenrode Brothers. Harry Bachman, Auctioneer

THURS JAN 22 9:00 A.M. Public Sale of Farm Equipment, Household Furnishings, Antiques. Located in S. Lebanon Twp., Lebanon Co., PA. Along Rt 897 1 1/2 mile SE of Lebanon. Mrs. Howard W. Patches Owner. Buf. Fenmeyer and Weik Auctioneers

SAT JAN 24 10 A.M. Public Sale of Farm Equipment & Household Goods. Location in Ephrata take Main St East to Mary Carter Paint store. At paint store turn right onto Bethany Rd. Go to 2nd crossroad turn left onto Brossman Rd. go to end of Brossman Rd. straight ahead to farm. West Earl Twp., Lancaster Co., PA. Sale by Amos Z. Hoover. John E. & Paul E. Martin Auctioneers

SAT JAN 24 2 P.M. Public Sale of 93 Acre Hog and Steer Farm. Located 2 miles East of Mt. Joy 1 mile West of Rt 283 On Manheim-Mt. Joy Road turn north onto Strickler Road then left onto Bricker Road (near Pleasant View Estates), Rapho Twp., Lancaster Co., PA. Terms by Glenn E. Bricker and Elaine F. Bricker, Rufus Geib and Raymond Miller, Auctioneers

FARM AUCTION SAT., JAN. 17th

at 11:00 A.M.

Turn off Rt. #706 just east of Montrose, Pa. at Andre's Fertilizer Plant and go about 1 1/2 miles to Watrows Corners. Susq. Co. Arrows!

60 HOLSTEINS

40 mature cows and 20 Hf's. Most of this dairy fresh, or will be, in next 60 days. A young dairy, some registered; that are thin but show potential and will improve with more feed. Many 1st calf Hf's. Vet examined, shipping fever shots and interstate charts.

MACHINERY

Oliver "1655" Diesel tractor wide front 3 point P/S, 2 M.H. "44" Tractors (1 with Loader) & good rubber, Oliver 5 Bottom, hydraulic reset plows, Oliver 12 ft. transport disc, Oliver 4 row planter, A.C. "60" combine, N.H. Rake, N.H. #276 Baler & thrower, N.H. #516 manure spreader (parts), Kicker box & wagon, Shaver post driver, I.H. 36' elevator, Fox chopper w/2 heads, Scrapper Rear Blade, N.J. 1 row picker, N.H. #352 Grinder Mixer, Gravity Grain Box & wagon, concrete mixer, 3 pt. fertilizer spreader, Fidelity 25,000 watt Generator, Arts Way Dion unloading box & wagon, Kools KB-54 Blower

Owners—
BRADFORD COUNTY FARMERS HOME ADMINISTRATION
having taken possession of this property from
Clinton & Rosalie Higley
R.D. #1 Forksville, Pa.

Terms - Cash or Approved Check
Lunch Wagon

Jim Adriance & Son
Auctioneers
Montrose, Pa.
717-278-1574

NI-CRETE FARMS DISPERSAL OF FARM EQUIPMENT

Quitting farming operation will sell at the Ni-Crete plant two miles south of Chambersburg, Pa., along Rte. 11, leave Rte. 81 at Marion or Wayne Ave. Exits on

SATURDAY, JANUARY 24, 1981

Sale at 11:00 A.M.

5 TRACTORS - DUMP TRUCK - J.D. 110

John Deere 4430 Diesel, wide front, quad range, dual controls, cab with air cond., heater, tape deck, 1835 hrs., J.D. Diesel, wide front, roll guard cab, dual controls, Syncra range, 2120 hrs.; J.D. 3020 Diesel, narrow front, cab, dual controls; front wts. sell separate for J.D., Massey Ferguson 1100 Diesel with cab and loader, 1170 hrs.; Ford Industrial Diesel with loader and 2 buckets, all tractors have power steering; 1 set of J.D. dual wheels; J.D. 110 with mower; tractor chains, 1958 Int. dump truck, dual axle, large aluminum bed, heavy duty hoist, runs good.

TILLAGE — HAY & FORAGE EQUIPT.

White No. 588, 5 - 18 in. automatic reset plow, like new; Athens No. 131 - 12 ft disc; Brady 9 tooth field cult.; J.D. 220 fold up disc, like new; 12 ft single packer; J.D. 336 baler with thrower and hay pres applicator; Hesston No. 420, 12 ft self-propelled windrower; Grumman tedder; J.D. 894 rake; Farmhand 2 wheel windrower turner; New Idea model 175 - 40 ft elevator; Hawkbit 12 ft. flail mower, Brady stalk shredder; Fox 3000 forage harvester, 2 row No. 0122 corn head, pickup attach, knife sharpener, Kools K B 30 blower; Gehl 9000 dump wagon, 7 wagons with high racks or high sides with false endgates, Cobey, Grove and other running gears, several heavy.

PLANTER — DRILL - MISC. EQUIPT.

J.D. 1440 - 4 row No. Till planter, dry fertilizer, hyd. fert boxes; J.D. 17 disc F B - B drill with double seed boxes; Brillion 8 ft packer-seeder, like new; trailer type sprayer, wide booms and long hose Hawkbit No. 205 tank spreader; J.D. 46 A loader; Ford 4 row rear cults, 6 and 7 ft. scraper blades; 2 wheel cart; 2 large round steel tanks, Ford pulley; misc parts and small items

AUCTIONEERS NOTE — For a good line of tractors and equip. don't miss this sale. Some equip. like new. Be on time as not many small items. For information call George Cashell at 717-264-8259

Terms - Cash or Good Check; Lunch at Sale

NI-CRETE FARMS,
Chambersburg, Pa.

T.K. Nitterhouse, Owner

Ralph W. Horst, Marion, Pa. Auctioneer

PUBLIC AUCTION

FARM EQUIPMENT;
HOUSEHOLD GOODS;
QUILTS; GAS ENGINES; MODEL A
FORD TRUCKS; ANTIQUES & GUNS
THURSDAY, JANUARY 15
at 10 A.M.

(Five miles west of Allentown) one mile north of Trexlertown, turn off onto Ruppville Chapmans Road for 1/4 mile to farm, Lehigh Co., Pa.

Ford 4000 tractor original rubber (nice), Ford 800 tractor 2444 hrs., Farmall M w/4r cult., 12' JD transport disc, Ford 9N tractor w/over & under trans (nice); front end snow blade for same, Ford four bot. 14" trip pl., Ferguson two bot 14" pl.; Dunham 10' roller harrow w/pl. packer roll (like new), Mc two bot pl on rubber, three sec harrow, (2) Dearborn 3 pt. mowers, Ferguson side mt mower, 8' single roll cultipacker; Int B7-10' transport disc, (2) four wheel trailers, 9' two wheel trailer, several horse drawn grass mowers, MC corn binder (nice), (2) Dearborn corn huskers, John Deere 494A corn planter w/double herbicide boxes; NH 24' bale elev w/tele chute, 18'-4" auger, corn drag, case rotary cutter, Albright corn planter, saw buck, 3 pt rear scoop, 3 pt. two row culti, 500 lb platform scale, ci hog troughs, small air compressor, 10'x12' brooder house; 125 gal gas tank w/pump; ci kettle; still parts, wooden wheel barrow; butchering tools & stuffer; old kit. cab; cedar wardrobe, (3) blanket chests, (3) trunks, cradle, dough box w/lid, gateleg drop leaf table; wood chest; plank seat chairs, dry sink w/lid, tin pie safe, claw ft Morris chair; rag carpet, (6) quilts, basket, star, white & others, undated coverlet (nice); buggy lap blanket; small split oak baskets, wicker baskets & bottles, pic frames; story of Berks County book 1925; beaded purse, coffee grinder, oil lamps, german helmet, german coins; brass bucket, old grain wind mill, 6 pc sponge ware micing bowl set (nice), pr twin beds; embroidery work, Olds 1 1/2 hp water cooled gas engine, Elgin Hofa-Hors water cooled gas engine, (2) model A Ford trucks w/bodies, no (cabs running)

GUNS double barrel muzzle loader, Win model 94-32 cal. w/nickle steel barrel Win model 37-12 gauge; J Stevens 20 gauge repeater, Savage 20 gauge (single), Hopkins & Allen 32 cal., NR Davis & Son double barrel, 12 gauge, hammer, Japanese rifle; plus many articles not mentioned

NOTE Auction starts promptly at 10 A.M. w/antiques, farm equip. sold approx. 1:30 P.M. Terms: Cash or check. Refreshments served.

Auction for,
VICTOR KUNKEL & THE FORMER FLOYD SNYDER ESTATE

Conducted by,
Ralph W. Zettlemoyer Auction Co. Inc.
(215) 395-8084

PUBLIC SALE

OF HOG & STEER FARM
SATURDAY, JANUARY 24

at 2 P.M.

Located 2 miles East of Mt. Joy, 1 mile West of Rt. 283. On Manheim-Mt. Joy Rd. turn north onto Strickler Rd. then left onto Bricker Rd. (near Pleasant View Estates); Rapho Twp., Lanc. Co., Pa.
93 ACRES

more or less, with 67 acres under cultivation and the remainder in pasture & woodland w/running stream.

BANK BARN with 2 drive-in's & a corn barn attached. A 20 x 80 ft silo with feed shed, 40 x 128 ft. steer barn with outside apron, 30 x 120 ft. finishing house with pit, heated 42 x 64 ft. farrowing house with 36 crates, 2 hog houses, all with pits and other misc. buildings.

2 1/2 STORY DOUBLE DWELLING with Asbestos siding. Side #1 contains 3 rooms & bath upstairs and 3 rooms (modern kitchen) & half bath downstairs. Laundry room with shower is attached. Side #2 contains 3 rooms & bath upstairs and 4 rooms (modern kitchen) downstairs. Laundry room with shower is attached. Oil hot-water heat (2 furnaces) and slate roofs.

This property has approx. 1319 ft. of road frontage along Strickler Rd and approx. 400 ft along Bricker Rd

This farm has gravel land and is zoned agricultural.

Persons wishing to view property may do so Saturday, Dec. 27 or Jan. 3 from 12-4 P.M. or by calling 717-653-4905 for an appointment.

Sale by:
**GLENN E. BRICKER
ELAINE F. BRICKER**
J. David Young, Attorney

Terms: 10% Day of Sale with Balance on or before April 1, 1981

Auctioneer: Rufus Geib (665-4136) and Raymond Miller