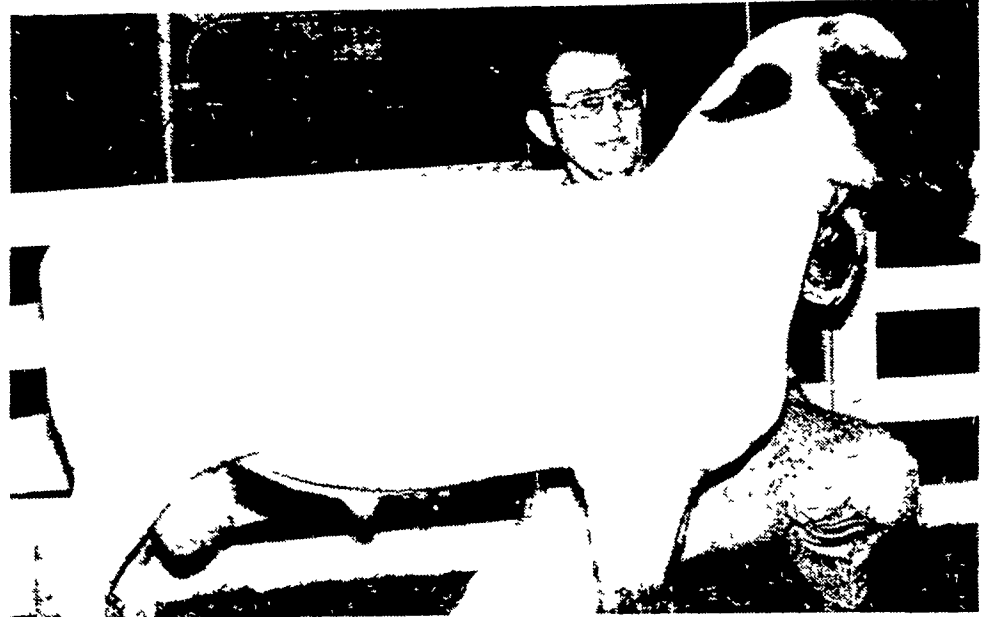


# 1980 Farm Show parade of champions



Donald Sheess, Chambersburg, earned the grand championship of the Junior Market Swine show with his purebred Duroc. Last year's Farm Show was the first one entered by the Franklin County youth. Also pictured is Judge Charles Andrews, Jr.



Clyde Brubaker, Lancaster, exhibited the grand champion Hampshire ram in the 1980 Farm Show Open Breeding Sheep competition.

## BOOTH INSULATION COMPANY

"THERMAL INSULATION SPECIALIST"

Residential • Agricultural • Commercial • Industrial

SPRAY ON — BLOWN IN — FOAMED IN PLACE

1167 Snapper Dam Road  
Landisville, PA 17538

Call  
Collect

**717-898-2760**

## JANUARY SPECIALS



PLACE YOUR ORDER FOR A FICKES SILO DURING  
JANUARY AND GET A PATZ RD 790  
RING DRIVE SILO UNLOADER AT A SPECIAL DISCOUNT

## MARVIN J. HORST

DAIRY EQUIPMENT  
1950 S. 5th Avenue, Lebanon, PA 17042  
PH: 717-272-0871

### Pole Shed & Barn Material Center

- 1x8 Barn Siding 6' to 16'
- 2x8 T&G Yellow Pine Barn Flooring

LARGE SELECTION OF  
ALL DIMENSION LUMBER

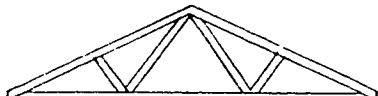
1 x 6 Rough Cypress Boards  
for Fence & Gates

#### PRESSURE TREATED LUMBER

- SIZES:
- 2x4
  - 2x6
  - 2x8
  - 2x10
  - 4x4
  - 4x6
  - 6x6
  - 2x6 T&G

Excellent For:

- ★ FARM BUILDING
- ★ PATIO
- ★ FENCE
- ★ POLE SHEDS
- ★ SUNDECK
- ★ OTHERS



For Low Prices on Roof Trusses  
Check with Musselman

#### Large Selection of LAWRENCE HARDWARE

- Door Hangers
- Bumpers
- Brackets
- Stay Rollers
- Track
- Latches

#### GAF VINYL SIDING

White

Only **\$53<sup>25</sup>** square

**FREE DELIVERY**



Put a roof  
over your roof.

Cover your old shingled or built up roof with

### Onduline

Corrugated asphalt panels  
warranted 25 years  
against leaks.

- USE THE ASPHALT ROOFING/SIDING THAT
- insulates like cork
  - installs easily on foot centers
  - will not rust
  - will not corrode from fertilizers or chemicals
  - offers a choice of built in colors
  - requires no special tools
  - is lightweight and flexible

Stocking Dealer  
Silver, Red, Green & Brown

## MUSSELMAN LUMBER INC.

200 BRIMMER AVENUE, NEW HOLLAND, PA

Phone **717-354-4321**

Hours: Daily 7 AM to 5 PM, Saturday 7 AM to 12 PM

