

SEE WALTER & JACKSON, INC. FOR **YOUR** POLE BUILDING NEEDS

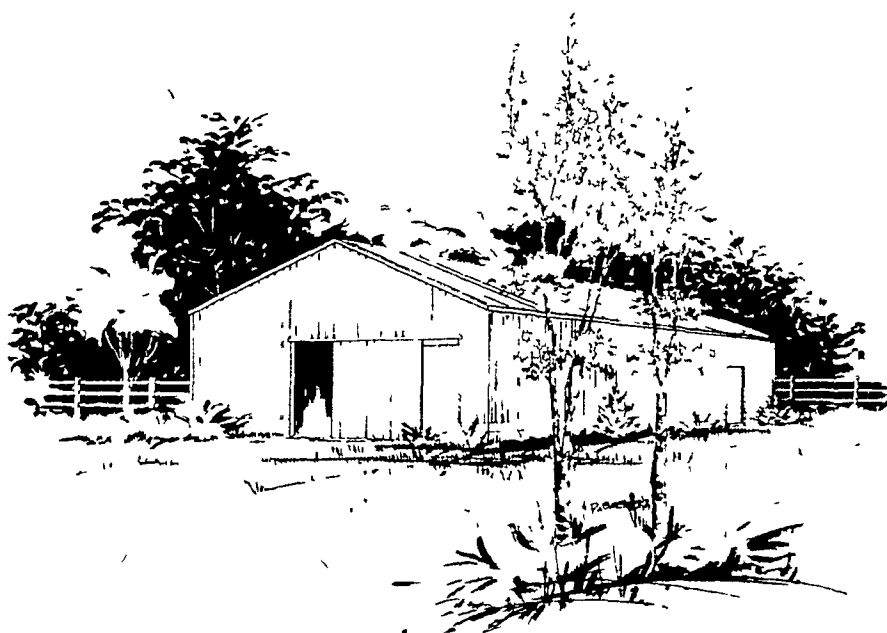
LET OUR TRAINED STAFF HELP YOU WITH YOUR NEEDS

Build now with Wheeling Channeldrain® to reap a bumper crop of savings.

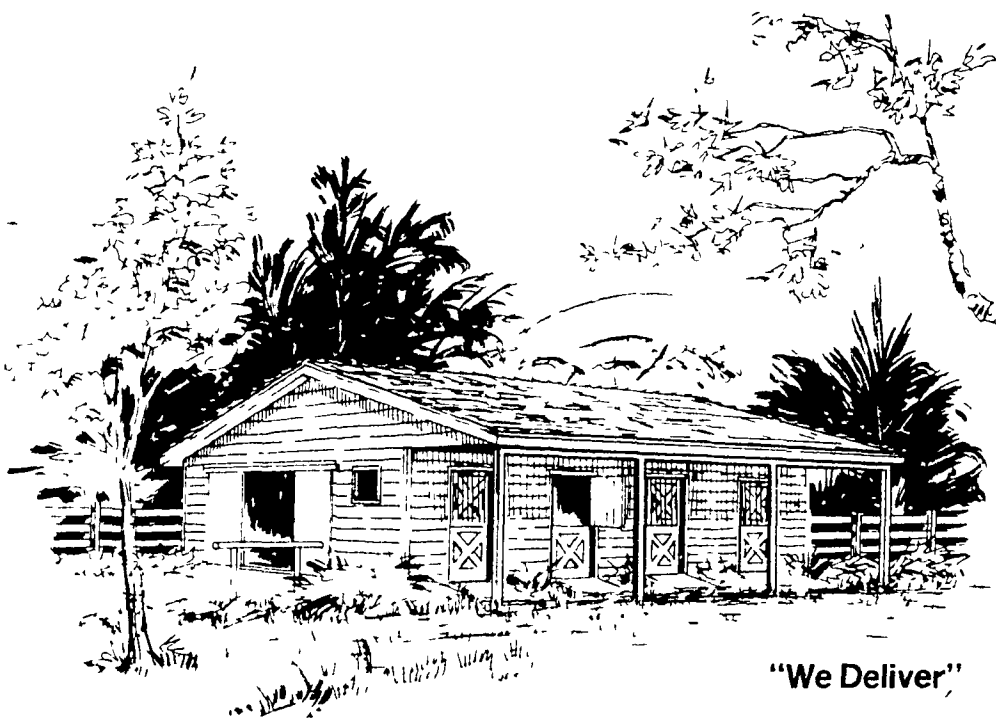
Farm building professionals agree: Wheeling Channeldrain roofing and siding panels give you a dollar-tight, weather-tight building.

- Tough, pre-painted galvanized steel lowers maintenance, protects your investment.
- Extra-wide 38" panels mean fewer panels and fasteners, save material costs.
- Patented drain channels run water off.
- Wide panel overlaps assure leak-proof joints.

Stocked in white, green, red
& galvanized



HORSE BARN POLE BUILDING



"We Deliver"

- 24 ft. x 36 ft.
- Four Box Stalls
- Space for Feed Storage
- Easy to follow blueprints

**MANY OTHER BUILDING
DESIGNS TO CHOOSE FROM
OR WE WILL DESIGN ONE
FOR YOU**

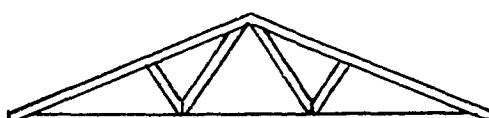
For a no-charge, no-obligation consultation on
your building requirements, phone or visit.

Ready to Serve You Throughout
PA, MD, DE & NJ

Call For Prices On



**2x8 T&G YP
Decking
1x8 #3 WP
Fencing
1x6 Y Pine
Roofers**



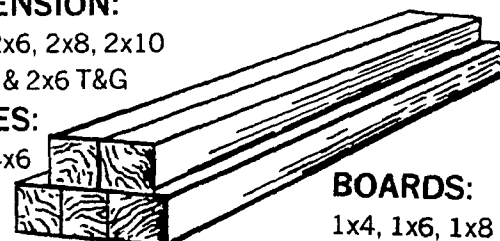
**WOOD ROOF TRUSSES
ORDERED TO YOUR
SPECIFICATIONS**

CALL FOR A FREE ESTIMATE
OF **YOUR** BUILDING

TREATED LUMBER

DIMENSION:
2x4, 2x6, 2x8, 2x10
2x12, & 2x6 T&G

POLES:
4x4, 4x6
6x6



BOARDS:
1x4, 1x6, 1x8

Wolmanized

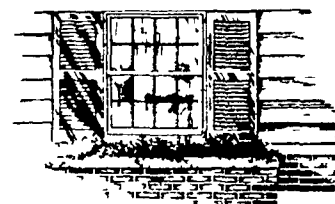


Agricultural

**ADDITIONAL PHONE NUMBER FOR YOUR CONVENIENCE...
TOLL FREE FROM MANY AREAS 717-786-7282**

**"WE DELIVER"
WALTER & JACKSON, INC.**

CHRISTIANA, PA. 17509
PHONE: 215-593-5195 or 857-2613



Residential

OPEN 7:00 to 5:00 M-F 7:00 to 12:00 Sat.



"Serving THE AREA'S Building needs since 1872"