

**STOLTZFUS MEAT MARKET
RETAIL MEAT MARKET**

**OUR OWN
CORN FED BEEF**

- FRESH CUT BEEF & PORK
 - FRESH EGGS RIGHT FROM THE FARM
 - ★ **OUR OWN COUNTRY
CURED HAMS, BACON
AND SWEET BOLOGNA**
- Orders Taken For Beef Sides, Wrapped
And Ready For Your Freezer



**Attention Farmers:
We Do Custom
Beef Slaughtering**

PH: 768-7166

Directions: 1 block east of Intercourse on Rt. 772
Reg. Hours: Thurs. 9-5; Fri. 9-8; Sat. 8-5

(Continued from Page D44)



Daniel Boyle

DANIEL BOYLE
Northern York County
High School

Daniel Boyle of Lewisberry hopes to attend college and study agriculture. What led to this is a series of ac-

complishments in the Gifford Pinchot FFA Chapter and being named a Keystone Farmer

Daniel, the son of Mrs. Nancy Boyle, has completed projects in swine finishing, swine breeding and work experience at the A L Baker, Ent Inc He also has played on the FFA volleyball team and the softball team. He participated in the York Fair and served on the Banquet Committee.

Daniel reports having received special recognition for his swine production, swine breeding and state FFA band efforts. He has received the White Rose Degree and has served as chapter vice president.

Besides his FFA membership, Daniel is on the National Rifle Association, tennis team and band He enjoys hunting, fishing, and cars.



Catherine Miller

CATHERINE MILLER
Northern York County
High School

Catherine Miller of Dillsburg is the daughter of Antoinette and Robert Miller of York County. Catherine has served as a member of the Gifford Pinchot FFA Chapter for three years.

This Keystone Farmer has shown swine in FFA at the Farm Show, participated in the Pleasure

Horse Project, and was head chairman of the Orange Committee for two years.

Catherine says, "My first year in FFA I was Chapter Sweetheart In June of this year, I attended the State Convention at Penn State and received fourth place in Pleasure Horse Judging. I also attended the National Convention this year."

Catherine has been in 4-H for four years, a camp counselor at Camp Sandy Cove, Northeast, Md., and a nurses aide at Seidle Memorial Hospital for four years.

"After school I plan on continuing at the hospital, also to work at home with my father increasing the farm beef herd and raising the showing horses, cattle and swine."

Catherine's other interests include horseback riding, swimming, meeting people, going places, helping others, working with young people and nursing.



Dale Myers

DALE MYERS
Northern York County
High School

Dale Myers of Wellsville has had such success in farming that he hopes to do it the rest of his life. But for right now, he's content just winning the Keystone Degree.

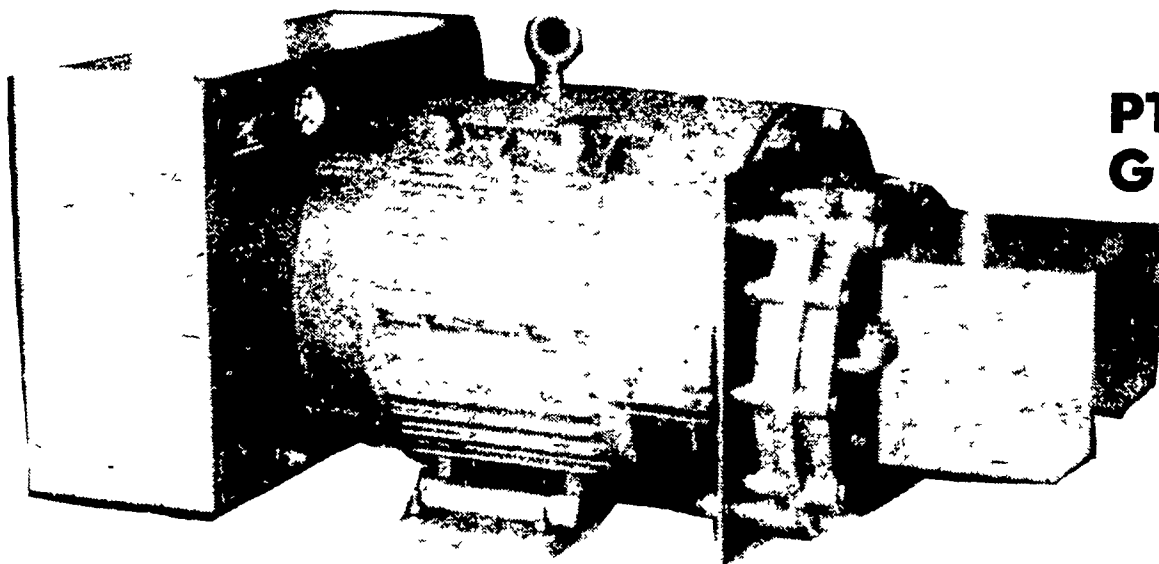
Dale, the son of Mr. and Mrs. Dale Myers of York County, has been a member of the Gifford Pinchot FFA Chapter for three years.

Dale's projects have included beef finishing, crop production, swine breeding, swine finishing, and work experience on a dairy farm. He also has served on such committees as the Initiation,

(Turn to Page D46)

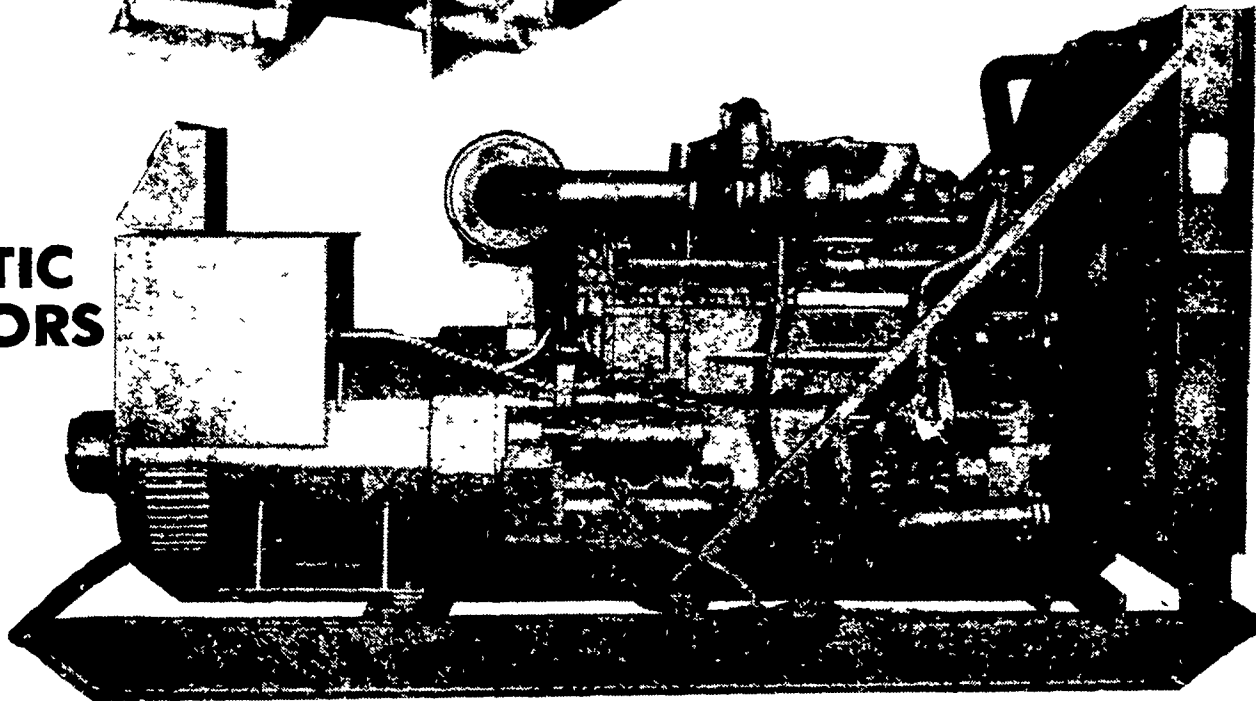
MAXI-POWER

A TRUSTED NAME IN EMERGENCY POWER

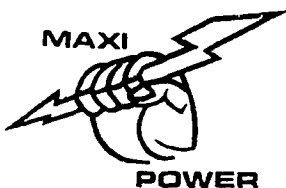


**PTO
GENERATORS**

**AUTOMATIC
GENERATORS**



**PTO GENERATORS, AUTOMATIC GENERATORS AND TRANSFER
SWITCHES WILL BE ON DISPLAY AND FOR SALE
AT THE PENNSYLVANIA FARM SHOW
Inside Booth #373, Outside Booth # 21-26**



MAXI-POWER

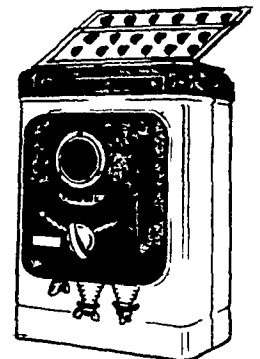
GENERATOR SYSTEMS

330 Fonderwhite Road, Lebanon, Pennsylvania 17042
PHONE: 717-274-1483

Division of Leonard Martin Company

- RADIO
DISPATCHED
TRUCKS
- 24 HOUR
SERVICE

SOLAR-PAK
By **PARMAK**
America's first
SOLAR POWERED
Electric Fencer



PARMAK
TRADE MARK OF QUALITY SINCE 1971

IF YOUR LOCAL DEALER
DOES NOT HAVE IT,
CONTACT:
**PEQUEA
BATTERIES**
RONKS, PA 17572
★ Authorized Distributor
& Warranty Station