

Union County

(Continued from Page D41)

Snyder County



John Alderfer

JOHN ALDERFER
Selmsgrove
High School

John Alderfer of Mt. Pleasant Mills is the son of Clyde and Darlene Alderfer. He has been a member of the Selmsgrove FFA Chapter for four years.

This Keystone Farmer's projects have included plant sales, dairy judging, forestry, small gas engines, parliamentary procedure team, dairy shows, forestry contests and creed contests. He also has served on the Exhibit Committee.

Jeff's projects have included dairy cows, dairy beef and field corn. He was the Sun Area President too.

Besides hunting, fishing and baseball, John enjoys FBLA.

His future plans are undecided.

ADRIAN HEIMBACH
Selmsgrove
High School

Adrian Heimbach of Middleburg is the son of Oran and Charlotte Heimbach. He has been a member of the Selmsgrove FFA Chapter for four years.

Adrian's projects have included being chairman of the membership committee, participating in the state project book contest and the ag mechanics contest for which he received a bronze award.

His projects have included dairy calves, beef growing, field corn and dairy cows. In the future he hopes to be an ag mechanic. He also enjoys football and snowmobiling.



Kenneth Beiler

KENNETH D. BEILER
Mifflinburg Area
High School

Son of Mr. and Mrs. Clarence Beiler, R1 Mifflinburg, Kenneth has participated in dairy projects for three years. A four-year member of the Mifflinburg FFA Chapter, he has served as assistant secretary, secretary and vice president.

Committee assignments include finance, safety and chairperson of the seed sales and banquet groups. His contest competition ranged from land judging, forestry, tractor driving, dairy, project record book to state dairy judging and parliamentary procedure.

Kenneth showed the grand champion at the Central District FFA Dairy Show and the Reserve Grand Champion at the Pennsylvania Junior Dairy Show last year. In 1979, he was a member of the area, regional and state parliamentary procedure teams.

Among his other activities are Church youth work and 4-H. Concerning the future, he plans to assume management of his parent's farm.



Lorne Miller

LORNE MILLER
Mifflinburg Area
High School

Lorne Miller hopes to operate a crop farm and start a beef and chicken farm in his future.

But for right now, he's content just winning the Keystone Degree.

The son of Eleanor Miller of Mifflinburg, Lorne has been a member of the Mifflinburg FFA Chapter for four years.

While in FFA, his projects have included dairy heifers, rabbits, chickens, bees, veal trapping, and veal calves. Lorne has also been involved in various improvement projects. They include a constructed feed box, a veal pen and a pig fence.

Lorne's contest achievements include blue book, state project record book, land judging and forestry. He has been chairman of dues committee, member of the seed sales committee and tree planting committee.

Lorne has a long list of achievements from FFA. He received the poultry proficiency award in 1980, the SUN area degree in 1979, first place in the state agronomy contest in 1980, second place in the area project record book contest in 1979 and second place in the local forestry contest.

Besides hunting, fishing, biking, hiking, photography, and wildlife drawing, Lorne enjoys basketball and softball.



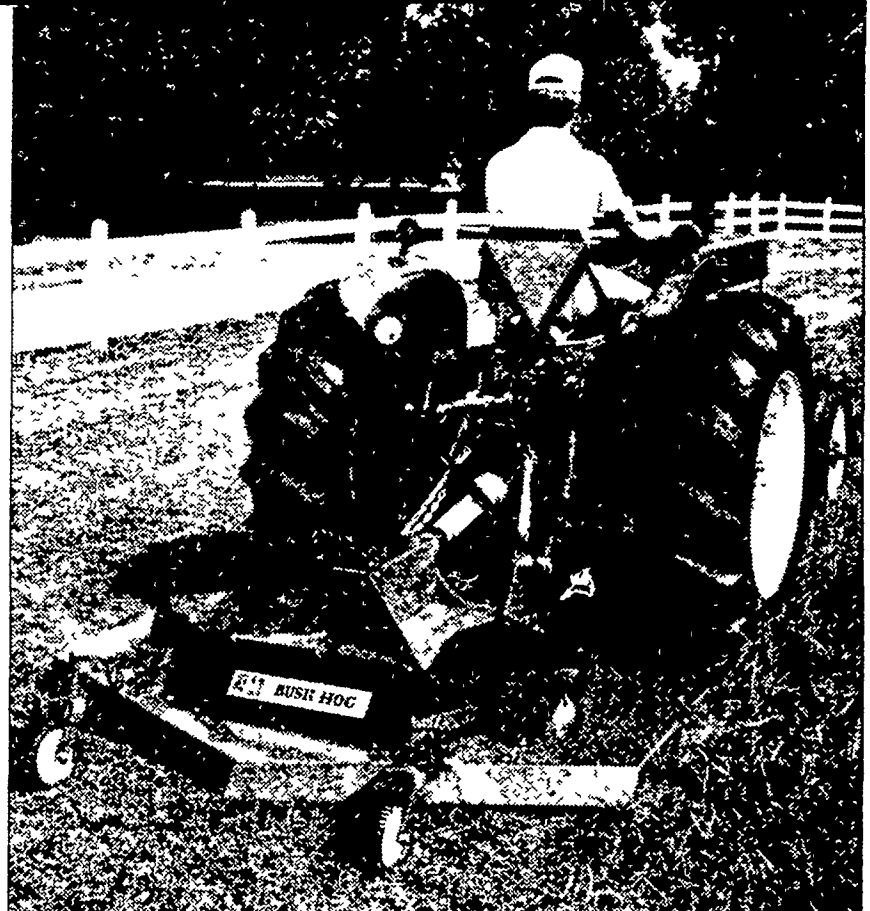
John Punako

JOHN PUNAKO
Mifflinburg Area
High School

John Punako of Lewisburg is the son of John and Marge Punako. He has been a

(Turn to Page D44)

**The Bush Hog[®]
TM Cutters
CLEAN CUT.
GOOD LOOKS.**



The blades on the Bush Hog[®] TM series cutters whirl at over 181 mph — almost 20% faster than competitive models! And the faster the blade, the cleaner the cut. The TM cutters were designed to float over large grassy areas, hugging contours, avoiding scalping. An exclusive Kevlar Cord[®] single in-line drive belt has twice the load carrying capacity of a nylon or fiberglass belt, resists twisting, stretching and slipping, and never needs adjustment.

The low deck profile and two-tone styling add to the sleek appearance of the TM series. Models TM 4, 5 and 6 cut paths of 4, 5 and 6 feet and fit tractors of 12 to 40 hp.

Come in soon and get a close-up look at Bush Hog quality.

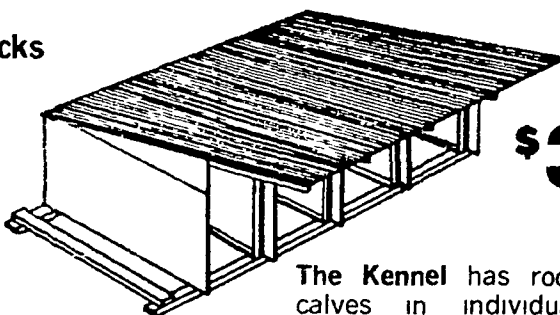
**SEE US AT THE PA
FARM SHOW SPACE #271**

SEE YOUR LOCAL BUSH HOG DEALER

- | | | |
|---|--|--|
| BENCE'S FARM EQUIPMENT
RD 2
Bedford, PA 15522
314-623-8601 | THOMAS L. DUNLAP
RD 1 Box 105
Jersey Shore, PA 17740
717-398-1391 | MILLER SALES & SERVICE INC.
Stewartstown, PA 17363
717-993-2470 |
| CLAPPER FARM EQUIPMENT
RD 1
Alexandria, PA 16611
814-669-4465 | NEUHAUS'ES INC.
RD 2
York, PA 17403
717-428-1954 | REEDY BROS. CO.
RD 4
Gettysburg, PA 17325
717-334-3710 |
| IVAN J. ZOOK
Bellefonte, PA 17004
717-935-2948 | GEORGE N. GROSS, INC.
5261 Davidsburg Rd
Dover, PA 17315
717-292-1673 | UMBERGERS MILL
RD 4 Box 132
Lebanon, PA 17042
717-867-5161 |
| FARMERSVILLE EQUIPMENT, INC.
RD 4
Ephrata, PA 17522
717-354-4271 | A. L. HERR & BROS.
312 Park Ave
Quarryville, PA 17566
717-786-3521 | STOLTZFUS FARM SERVICE
Cochranville, PA 19330
215-593-2407 |
| PETERMAN FARM EQUIPMENT, INC.
225 York Rd
Carlisle, PA 17013
717-249-5338 | CHAPMAN EQUIPMENT CENTER
RD 2
Wescosville, PA 18106
215-398-2553 | |

Solar Calf Kennel

Feeding Racks included, Each Feeding Rack consists of Pail and Hay Rack. Pail not included.



\$385

The Kennel has room for 4 calves in individual pens. Calves cannot reach together. Overall size 8x12, plus 3' overhang to protect feeder on 4x4 skids, and is movable. Half-inch Aspenite sides and white baked enamel roof to reflect heat.

We Can Arrange Delivery

Other Styles and Sizes Available

Ira C. Herr & Son, Inc.

RD 1
Quarryville, PA 17566
Phone 717-284-4543 Nite 717-786-2090