

(Continued from Page D38)

the last three years I was in school. I also showed animals at the Lebanon County Fair three years," Clyde said

Besides serving on the recreation committee and the savings committee, Clyde has been in several tractor driving contests. He won first in the area contest in 1978, second in the state in 1979 and third at the farm show in 1980

Clyde, who graduated from high school in 1979 and boasts a five year membership in the Cedar Crest

FFA Chapter, has been working for his father on their dairy farm. In April of this year Clyde and his father started his partnership on their 140 acre farm.

KERRY MORTON
Annville-Cleona
High School

Snowmobiling is more than just a pastime for Kerry Morton of Annville. He has incorporated it into his work in FFA and in his future.

Kerry says he would like to pursue a career in farming and would like to become an

independent snowmobile racer.

But for now, Kerry is content with winning the Keystone Farmer Degree. The son of Mr. and Mrs. G Lowell Morton, he has been a member of the Little Dutchmen FFA for four years

In FFA his projects have included being chairman of



Kerry Morton

the snowmobile committee, co-chairman of the recreation committee and gaining experience in swine fattening two years, trapping three years, and work experience three years

This Keystone Farmer has served as parliamentarian and has received Grand Champion for his fatter hog while in FFA

Kerry, who enjoys trapping, hunting, and snowmobiling, is a member of the Blue Mountain Snowmobile Club, the Pennsylvania Trappers Association and the Pennsylvania State Snowmobile Association

JEFF REIGEL
Annville-Cleona
High School

Jeff Reigel of Annville

hopes to continue farming with his father and eventually own his own operation someday. His parents are Paul and Nancy Reigel of Lebanon County.

Jeff has been a member of the Little Dutchmen FFA Chapter for four years.

This Keystone Farmer has served on the Bologna Committee, the Awards Committee and the Snowmobile Committee. He has had projects in swine breeding, broilers, and soybeans

Jeff has served as sentinel, president and the Lebanon County sentinel. His lists of awards include: state rifle contest, third; county land-judging, seventh, area agronomy contest, third; county project book, second in 1978 and third in 1979; the Eleanor Whitmeyer Award for leadership development; county land judging for 1980, first; and area agronomy contest for 1980, second.

This hunting and snowmobiling enthusiast also enjoys track and field, the Pennsylvania Trappers Association and the Fairland Brethren in Christ Church.



Jeff Reigel



Edward Kegerreis

EDWARD KEGERRREIS
Eastern Lebanon County
High School

Ed, the son of Mr. and Mrs. John Kegerreis of Myerstown, lives on the family farm with his parents.

The farm consists of 85 acres and they grow mainly corn for grain. In addition, the family operation feeds out approximately 2,000 head of market hogs each year.

Ed's main enterprise during his tenure in the Elco vo-ag program has been swine finishing. He has carried out a program which was culminated in his record book being ranked number one in the state in 1979. His swine finishing project has brought him many additional awards and trophies on the local, county and state levels.

Throughout his years at Elco, he has participated in many activities conducted by the local FFA chapter. He presently serves the local membership as the chaplain. In addition, he has been a member of the chapter livestock judging team, was

a participant in the local tractor driving contest and also participated in FFA Activities Week at Penn State in 1979.

Ed attends the Heidelberg Church of the Brethren. His future plans include forming a partnership with his father and continue in the market hog industry



John Kline

JOHN KLINE
Eastern Lebanon County
High School

John is the son of Mr. and Mrs. Norman Kline. He resides on the home farm along with his parents and two other brothers

The farm located at R2 Myerstown, consists of 540 acres mainly of corn, alfalfa, and wheat. In addition, a total of 80 dairy cows are milked with an additional 180 replacement heifers and 75 dairy bulls in the herd.

The main enterprise of John's Supervised Farming Program has been dairy animals. His own herd consists of six dairy cows, four heifers and two bulls. In

(Turn to Page D40)

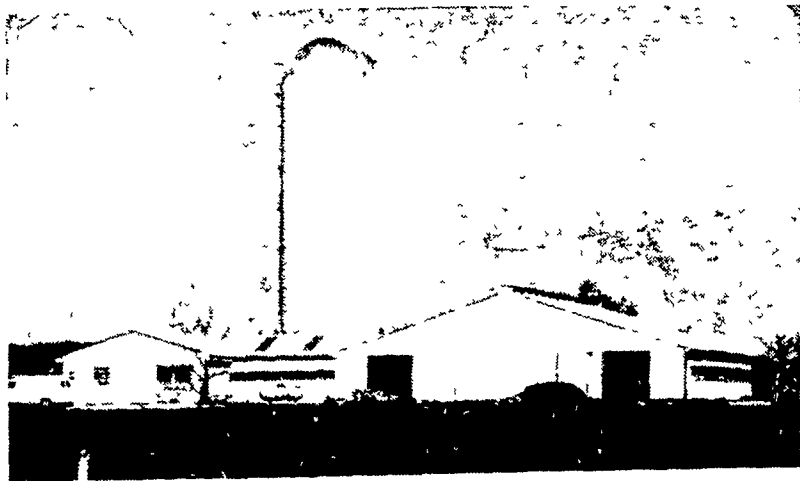
FOR GRAIN STORAGE

CALL
215-593-2157

ROBERT McCOMSEY
RD 1 COCHRANVILLE, PA 19330

HUSKIE BILT
QUALITY FARM BUILDINGS

COMPLETE BUILDING SYSTEMS FOR ALL FARM NEEDS



We Have A Skilled Crew Available For Erection if Desired



• DAIRY • BEEF • POULTRY • SWINE
• HORSE BARN • ALL PURPOSE BUILDINGS

DAIRY COMPLEX BUILDINGS

- ★ FREESTALL BARN
- ★ STANCHION BARN
- ★ HEIFER & CALF BARN



CALL FOR ESTIMATES ON OUR LOW PRICED, HIGH QUALITY BUILDINGS

Call or Write To Us

WICKES LUMBER

Rt. 272 & Garden Spot Road
Ephrata, PA 17522

717-738-2401
717-394-9325

Or
MERVIN MILLER — 717-626-5204