

FARM EQUIPMENT

FARM EQUIPMENT

FARM EQUIPMENT

TORQUE AMPLIFIER, CLUTCH & TRANSMISSION PARTS & SERVICE

TA UNITS GUARANTEED UP TO 2 YEARS.

Rebuilt TA assemblies available for all IH tractors, New and rebuilt water pumps. Dynalife clutches and pressure plates for A, B, C through 1586, also for most models of IH combines.

If you are operating a shop or are a farmer who does his own mechanical work, then you will do well to compare the parts which I have to offer. Complete TA assemblies for 706-1586 are priced from \$525 and come with a Dana Co Heavy Duty Sprag clutch instead of the usual IH sprag. The Dana Sprag is guaranteed for 2 years against failure. Ramps and Carriers for older style TA units are priced \$135 & \$145 respectively, and carry a 90 day guarantee.

We have most parts needed for TA repair in stock and are prepared to do complete installation at competitive prices.

Shop is also now available for engine overhauls and other major tractor repairs
For a no obligation estimate or for information and references write or call me

Dealer Inquiries Invited; Parts Shipped UPS, Bus or Air

J. EDWARD LEAMAN

RD #1, Box 474 Willow St., PA 17584
717-464-2874

BUY NOW! TAKE ADVANTAGE OF 10% INVESTMENT CREDIT

NEW EQUIPMENT:

Gehl CB700 Harvester, HD PTO drive, hydraulic deflector & manual cap, 11Lx15 8 ply tires, hydraulic cylinder, hydraulic knife sharpener, HA 1000 hay pickup head, TR 3038 corn head, freight & setup
Waiver of Finance til 5/1/81 List Price \$11,992.

GEHL 100 Bushel Grinder Mixer setup & delivered **\$7900**
GEHL FB99 Forage Blower, HD 540 RPM PTO (Waiver Til 5/1/81) **\$5500**

GEHL 6 Ton Running Gear, wide rims, no tires, extendable hitch **\$1980**

GEHL RB 1600 Round Baler, freight & setup **\$ 525**

GEHL 54" Material Bucket for Skidsteer **\$8800**

VICON Windrow Turner, regular **\$ 192**

1 Set McCurdy 18 4x38 snap on duals **\$ 250**

Pequea Tedder PTO Drive, List **\$ 395**

Lely 800 lb 3 pt Fertilizer Spreader **\$1265**

Badger Forage Wagon, 16'x6' Sides, w/roof & roof protector, 10 ton tandem running gear, 10 00x15 tires, freight & set up included, List **\$ 895**

56 International Blower HD 540 PTO Freight & setup included **Now \$5900**

20 Single Disc Openers for 510 or 5100 Drill **Now \$1860**

6010 Consortil Chisel Plow 10' Frt & setup **\$ 995**

Badger 10 ton tandem axle running gear **\$3820**

(Rear half only) (includes tires) **\$ 700**

Jacobsen Snow Burst Lightweight Blower **\$ 299**

80 Lawn Tractor **1979 price**

2-1250 Cadets **1979 prices**

4-1450 Cadets **1979 prices**

Unicorn Log Splitter **\$ 275**

Gilson 5 HP Walk Behind Tiller **\$ 695**

Parker 36" Lawn Sweeper **\$ 295**

4 Jacobsen Lawn Mowers **1980 prices**

USED EQUIPMENT:

Hahn Eclipse Mower **Make an offer**

574 Tractor Gas, 3 pt., hitch **\$5500**

756 Diesel Tractor, wide front end, good rubber **\$8000**

45 John Deere Combine w/Cornhead **\$4000**

205 Combine w/2 Row Cornhead & 13' Platform **\$8000**

715 Combine, 4 Row Cornhead & 13' Platform **\$17,500**

Waiver of Finance on New & Used Combines Till 9/1/1981!!

400 Cyclo 6 Row Planter **\$4000**

AC 6 Row Planter w/No Till **\$3500**

Waiver of Finance on New & Used Planters Till 4/1/81!!

14' Folding Brillion Harrow **\$1050**

Pincor 15 KW Alternator **\$1050**

#5 Stalk Cutter **\$ 750**

Bale Wagon w/running gear **\$ 795**

#10 Bale Thrower, excellent shape **\$1000**

FB88 Gehl Blower **\$ 750**

4 Used Mower Conditioners In Stock **Make an offer**

Ford Baler w/Thrower

THERE IS WAIVER OF FINANCE ON MOST NEW & USED PIECES OF EQUIPMENT! ASK US FOR DETAILS!

INCH EQUIPMENT CO.

Dalmatia 717-758-3021
717-758-6491

35 miles North of Harrisburg, PA on Rt. 147

• U.P.S. Service Available

FARM EQUIPMENT

FARM EQUIPMENT

FARM EQUIPMENT

FARM EQUIPMENT



USED EQUIPMENT

AC 160 Tractor
JD 4020 Tractor
JD 494A Planter
JD 694A Planter
JD 7700 combine
JD 4400 Combine
JD 105 Combine
JD 727 rotary mower
JD 244 Cornhead
JD 1250 corn planter
IHC 445 baler (like new)
JD 214WS Baler
JD 24T Baler
NH 273 baler
JD 485 mower conditioner
NH 469 Haybine 9'
JD FBB Drill
JD FB Drill
JD 3800 Chopper
JD 110 Disk 13'
JD 33 manure spreader
JD 47 loader
Oliver 5x16 Plow
Case - Field Cultivator
FORD - 230 Disk
IHC 510 drill

NEW EQUIPMENT

Spring Tooth Harrows in Stock
Grimm Tedders in Stock
H & H Bale Bodies

SPECIAL PRICES ON

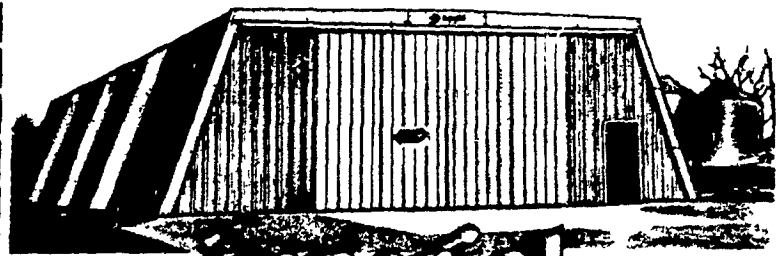
NEW EQUIPMENT
JD 111 Disk
JD 7000 - 12 row N folding planter
JD 7000 4 row planters

J.S. COVERT & SONS

Neshanic Station, NJ
201-369-5241
Just 3 miles off Rt. 202
(Between Flemington & Somerville)

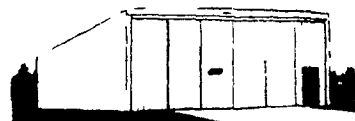
Hold Everything!

...buy the building that can-



...mfs **Imperial**

- ALL-STEEL, RIGID-FRAME CLEAR-SPAN CONSTRUCTION
- AVAILABLE IN 40', 48', AND 60' WIDTHS SLANT-WALL AND 30' 37', 48', AND 60' WIDTHS STRAIGHT WALL ANY LENGTH IN 24' MULTIPLES
- FOUR PIECE EASY TO HANDLE SLIDE-BY DOORS ON DOUBLE TRACK, FIT ENTIRELY WITHIN FRAMEWORK WHEN OPEN
- ALL-BOLTED FRAME COMPONENTS FOR FAST, EASY, LOW-COST ERECTION
- WALL AND ROOF PANELS 26s GAUGE - CHOICE OF COLOR



IMPERIAL STRAIGHT-WALL BUILDING



COMPLETED FRAMEWORK OF A 48 X 120 SLANT WALL BUILDING

COMPARE PRICE, QUALITY, FEATURES- THE CHOICE WILL BE OBVIOUS!

Discounts up to 30% with orders before Jan. 5, 1981



Hade's Equipment

(Glenn Hade)
10355 Five Forks Rd
Waynesboro, PA 17268
717-762-4985

AFTER 40 YEARS OF CONTINUOUS SERVICE TO IT'S CUSTOMERS

EDWARD & COX, of Oxford will become

OXFORD GREENLINE, INC.

(effective Jan. 2, 1981)

In an effort to bring the best possible value to it's customers, we are offering a

10% DISCOUNT ON ALL PARTS THRU THE MONTH OF JANUARY 1981

(\$50 minimum purchase)

The new organization would like to invite you to it's Farming Frontier Days to be held on

JANUARY 22, 1981

1:00 P.M.

At the Redmen Hall
Oxford, PA

There will be refreshments and door prizes

OXFORD GREENLINE

Rd 1, Oxford, PA
215-932-2929

