

FARM EQUIPMENT

FARM EQUIPMENT

FARM EQUIPMENT

FARM EQUIPMENT

FARM EQUIPMENT

FARM EQUIPMENT

FARM EQUIPMENT



**USED COMBINES**  
IH 1440 w/844 corn head  
IH 503 w/2 heads  
IH 815 w/gram head  
IH 205 w/gram head  
JD 105 w/2 heads  
MM 4296 w/2 heads

**NEW TRACTORS**

IH 3588 2+2  
\* IH 284 diesel \*  
IH 384 w/1850 loader  
IH 584 diesel  
Farmall 1086  
Farmall 986

**USED EQUIPMENT**

Farmall C  
Farmall 966D  
Farmall 504  
(2) Farmall H  
Farmall 666 gas  
Farmall 656 D  
Farmall 656 w/WF axle  
Farmall 560 gas  
IH 784D  
IH 674D  
IH 656  
IH 544D w/l dr  
JD B

**USED HARROWS**

IH 37 10'  
IH 9A 9'  
21' MF disc harrow  
Lilliston rolling harrow  
10' transport harrow

**CHOPPERS**

AC 720 chopper w/2 row head

**TILLAGE**

IH 735 vari-width, auto. plow  
IH 55 chisel plow  
IH 6000 consertil  
IH 4500 Vibra Shank

**DISCS**

IH 122 5'6"  
IH 122 6'9"

**USED GRAIN DRILLS**

IH MF 16x7

**HARVESTING**

IH 1 PR corn picker

**NEW COMBINES**  
IH 1440 w/844 corn head

**WM. HOBENSACK'S SONS**

1060 Greeley Ave., Ivyland, PA

215-675-1610

215-343-2101



**GOOD USED EQUIPMENT**

<b>Tractors</b>	<b>Hay</b>
MF 175 diesel	MF 12 baler
MF 285	w/thrower
MF 275 diesel w/cab	JD 336 baler
MF 1080 diesel	w/thrower
MF 1150 w/cab	MF 37 rake
MF 1150 w/duals	NH 256 rake
MF 65, gas	NH 479 haybine
Farmall 450 Diesel	Hesston PT7
MF 203 diesel	Hesston PT10
backhoe	Hesston 1014 - 10'
MF 210 diesel, 25 h.p	Hesston SP420
MM G950 diesel	Hesston SP6600
<b>Skid Steer Loaders</b>	<b>Tillage</b>
Gehl HL 2600	9' PT chisel plow
Gehl HL 3030	Moore no till drill
Owatonna 1700	<b>Spreaders</b>
w/grapple	NI 206 like new
<b>Combines</b>	Starline 180 bu.
JD 55 diesel, cab, 3	Hawk Bult 180 bu.
row	Hawk Bult 150 bu.
JD 45 cab, 2 row	<b>Miscellaneous</b>
IH 615 cab, 3 row	Papec 8800 Mixall
MF 300, cab, 3-row	Gehl 120 Mixall
	Kelly 300 loader
	JD 37 loader
	NI loader

**SPECIAL OF THE MONTH**  
New Hesston 6450, 10' w/cab

**Longenecker's, Inc.**  
At Clappertown Williamsburg, PA  
814-793-3731

**NEW EQUIPMENT**  
WHITE - 2-85 Tractor  
2-45 Tractor

**KAWANEE-**  
46 ft. 8" Auger  
Elevator

**BRILLION-**  
12 ft. Pullveriser

**GEHL-**  
2600 Skid Steer Loader  
4400 Skid Loader

**USED EQUIPMENT**

MF No. 20 Tractor  
Gehl Forage Wagon  
with Tandem  
Running Gear  
Int. 350 Harvester with 1  
Row Cornhead and  
Hay Pickup Head.  
Oliver 3242 Mtd. 3-Bot.  
14" Plow  
Oliver 1850 Gas  
White 5400 4-Row  
Cornplanter w/  
Liquid Fertilizer  
FB88 Gehl Forage  
Blower  
NI 324 Gathering  
Unit w/314 sheller  
NH No. 880 Forage  
Harvester w/3  
row cornhead

**MILLER EQUIPMENT CO.**  
RD 1 Bechtelsville, PA  
215-845-2911

**LANDIS BROS. INC.**  
**NOW SERVING THE STATE OF DELAWARE DIRECTLY FROM WILMINGTON!**

**PIPE**

NEW, USED and RECONDITIONED PIPE  
STANDARD - EXTRA & DOUBLE EXTRA HEAVY - ALL  
SCHEDULES - ALL TYPES FABRICATION - THREADING  
CUTTING - WELDING  
121 SO. MARKET ST. - WILMINGTON 19801  
302-656-0276 or 215-DE1-4240



<b>NEW EQUIPMENT</b>	<b>USED TRACTORS</b>
<b>New Tractors</b>	JD 4240 quad w/ sound guard body, exc
JD 1050	JD 4520, SR w/year around cab
JD 950	JD 4320, SR, WFE
JD 850	JD 3020 diesel
JD 2440	JD 3020 gas
JD 2040	JD 2520 gas
<b>NEW FORAGE HARVESTERS</b>	JD 2640 HU diesel, hi- lo
JD 3940 w/2 RC & hay pickup	JD 2440 HU diesel, hi- lo
JD 5440 SP w/3 RC & hay pickup	JD 2630 HU diesel
<b>NEW JOHN DEERE EQUIP</b>	JD 2030 RU diesel w/48 loader
JD 215 12 10" disc harrow	JD 2010 gas RC
<b>USED PICKERS</b>	JD 720 diesel RC
NI 324 2 RW picker	IHC 656 diesel hydro, exc
NI 323 1 R	IHC Super C Farmall A w/cult
<b>USED COMBINES</b>	<b>USED HARVESTERS</b>
Massey 300 w/cab & 13' platform, 3 RW head	JD 34 w/2 RC & hay pickup
708 NI power unit, like new w/hydrostatic cab & air	JD 38 w/2 RCN & hay pickup
	JD 3600 w/2 RCN & hay pickup
	NH 707 3 pt hookup w/RC attach

**NEW IDEA 206 GROUND DRIVE SPREADERS WILL BE COMING (Taking Orders Now)**

**USED SNOWMOBILE CLEARANCE SALE**

Make	Model	Was	Sale
1 JD	1980 440CC Liquid Fire w/200 mi	\$2650	\$2495
1 JD	1977 440CC Liquid Fire	\$1695	\$1595
1 JD	1976-440CC Liquid Fire	\$1450	\$1350
2 JD	1979 339CC Spit Fire	\$1250	\$1095
1 JD	1976-340CC Cyclone	\$1295	\$1045
1 JD	1974-439CC 600 Electric Start	\$950	\$850
1 JD	1972-439CC 500, 1050 mi	\$650	\$500
1 JD	1973-439CC 500 w/ electric start	\$695	\$575
1 Polaris	1976 TX340	\$925	\$825
1 Scorpion	1972-440CC Stinger III	\$595	\$450
1 Scorpion	1970 Mark III	\$475	\$375
1 Snow Jet	1972-292CC w/ electric start	\$395	\$295

**Prices Reduced on all New JD snowmobiles**

**INTEREST WAIVED ON ALL NEW JD SNOWMOBILES UNTIL 12-1-81 WITH A DOWN PAYMENT**

**LANDIS BROS., INC.**  
1305 Manheim Pike  
Lancaster, PA 17601  
717-291-1046



**Sizes 20' to 36'**

The Series 42 WingPacker is available in sizes from 20 through 36 to fit your every application. Choose the size that best fits your operation. If you want to pull the Series 42 behind a disc harrow or field cultivator, choose a size to allow for plenty of overlap.

**All Hydraulic Operation**

A single hydraulic control operates all functions on the Series 42. A simple movement of the hydraulic lever places the WingPacker in transport position then the wings fold up and over into their flat storage position. Reversing the sequence the center section is first lowered to the ground followed by the wings unfolding.

**IN STOCK**

20 7' Rolling width 17 in rollers weight 3715 cylinder & hose to tractor

**\$3626.00**

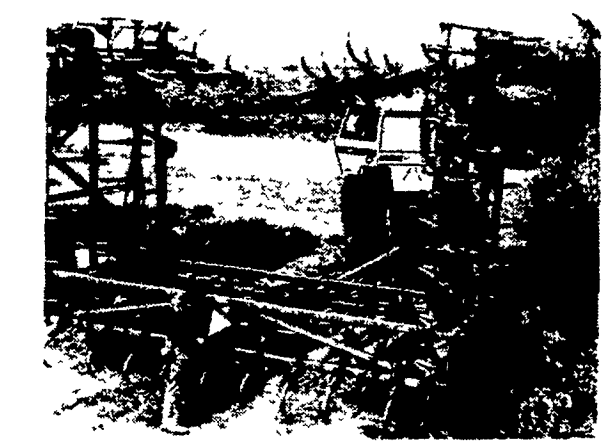
24 9' rolling width 17 in rollers weight 4115 cylinder & hose to tractor

**\$3846.00**

**EARTH SHATTERING TILLAGE TOOL FROM CASE**

Field Cultivator Wing  
Hydraulic Fold 22 Pt. Wide  
Transport Width 12 ft.  
Cylinder and Hose to Tractor

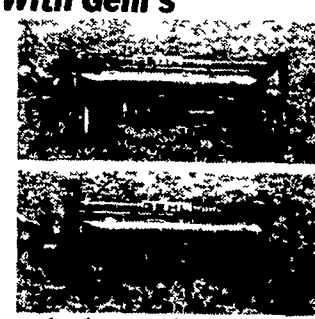
**\$6400.00**



Wings fold hydraulically for handy transport and turning in the field. They can be pinned for safety and to take the load off the cylinders in transport. The long, sturdy double hitch pole adds stability to wide models, eliminates wobble in rough fields, absorbs the strain of trailing planters or fertilizer nurse tanks.

**Now You Can Cut Your Crops Quickly, Without Plugging, With Gehl's NEW Disc Mowers**

Whether it's down and tangled alfalfa matted grasses or crops heavy with dew or fresh rain these mowers **WILL** cut it, leaving your field smooth and evenly mowed.



quick adjust windrow shields. Adjustable shields allow you to lay your crop back in full width swaths, or tall, fluffy windrows. No tools required.

**GEHL 1080 DISC MOWER \$8025.00**

**USED TRACTOR SPECIALS**

Allis Chalmers 7040 Diesel Tractor cab, air heater, power shift 20 8x38 rear tires, low hrs., 700 Hrs auxiliary flood lights	\$23,800.00
Farmall 350 Diesel, belt pulley, fast hitch, nice	\$2550.00
IH 1456 Diesel, no cab dual PTO dual hydraulic remotes, 20 8x38 rear tires like new, wide front & front end weights one owner, 1971 model 2000 original hours, horsepower tested at 140 to 150 A-1 condition	\$13,181.00
Oliver 77 Diesel, good rubber, hydraulic remotes nice	\$1850.00
Farmall Super C with fast hitch complete set of cultivators, 2 bottom fast hitch plow	\$1850.00
Used Case 1845 gas Uni Loader 1977 model, 651 original hours large bucket	\$10,500.00
Used Case 1830 gas Uni Loader, one owner, late model	\$6900.00
Case model 118 riding mower, with deck, hydrostatic drive	\$489.00
Late model Case 222 Tractor, new red color, 12 H P, hydraulic drive and hydraulic implement lift with a 38' heavy duty mower deck special sleeve hitch attachment for rear mounting of implements, serial number 9736728	\$1180.00
John Deere 4230 D, 4 Post Canopy 18 4x38 tire	\$16,400.00
Oliver 1650 gas, wide front, front weights, excellent	\$5800.00
Big Mac model 18 skid loader, Ford gas bucket & manure fork 651V	\$6900.00
AC 7050 D cab, air heater, front weights, power shift	\$15,900.00
Case 2470 w/18 4x34 duals, power shift, less than 600 hr cab air heater, PTO	\$35,800.00
Oliver 1250 utility diesel	\$2164.00
Case 1070 Diesel Tractor 1750 hours 4 post roll frame w/canopy, standard shift, 18 4x38 rear tires	\$12,900.00
Case 530 gas, wide front end, Draft-o-matic, 3 pt hitch, P S late model	\$3800.00
Case 1370, power shift, no cab, 1 owner	\$18,800.00
IH TD9 Crawler Loader Tractor w/4-1 Bucket, good operating condition, less 40% for cash, F O B our lot	\$5980.00
(3) 990 David Browns	from \$2000.00 to \$3000.00

**Case BINKLEY & HURST BROS.**  
133 Rothsville Station Rd., Lititz, PA 17543 Ph: (717) 626-4705  
Business Hours: Mon. - Fri. 7 AM to 5 PM; Sat. 7 AM to 11:30