

Meet the nominee for U.S. Agriculture Secretary

GALESBURG, Ill. — John R. Block, named Illinois Director of Agriculture in February, 1977 has been nominated by President-elect Ronald W. Reagan to be U.S. Secretary of Agriculture.

If approved by the U.S. Congress, Block will bring with him to Washington a broad background in farming and agricultural administration.

His accomplishments both

in farming and as Director of the Illinois Department of Agriculture are many. He has made a name for himself in market promotion and administration.

Block is a 1957 graduate of the U.S. Military Academy at West Point.

Since 1960, when he completed U.S. Army service as an infantry officer, he has been at the helm of Block Farms located near Galesburg, Ill.

The family operation has grown in the past 20 years from a 300-acre farm producing 200 hogs annually to a 3000 acre enterprise with a yearly production of 6000 farrow-to-finish head.

Like most of the other farms located off I-74 Northwest of Peoria and not too far from Iowa, corn and soybeans are his major crops.

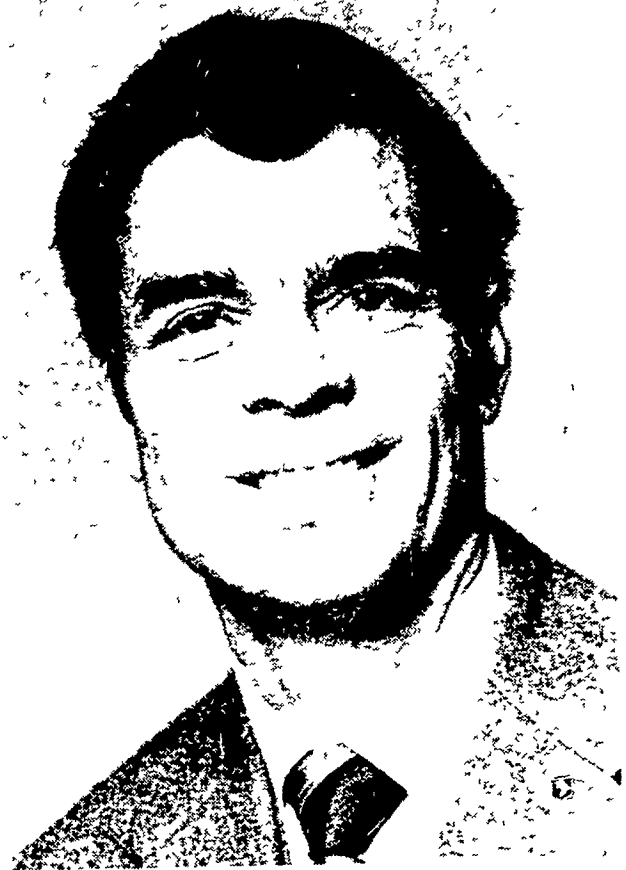
Block's farming career has been starred with

awards and honors.

In 1969 he was named Outstanding Young Farmer in Illinois in the U.S. Jaycees competition.

He was given the Illinois Extension Service's Meritorious Service Award for outstanding contributions to state agriculture. He was named to serve as a trustee of the state farm foundation.

He is a former board member of the Illinois Farm



John R. Block

Bureau, served as Farm Bureau director, and was chairman of the 11-state midwestern farm leaders' summit conference this past July.

More important than gathering honors, though, is what a man has done.

If nothing else, Block has

shown himself willing to travel.

This past September he led a three-week fact finding mission to the Soviet Union, Poland, Hungary, Austria and Switzerland.

He served as a member of

(Turn to Page B10)

**HEAT FOR LESS
WOOD OR COAL**

THERE ARE TWO WOOD STOVES IN THIS PICTURE

EFEL The one you see is an open stove with all the beauty of the open fireplace. The one you don't see is an air tight stove that heats up to 7000 sq. ft. in 8 hours, when you close sealed glass front.

The Efel is designed to be used either free standing or vented into an existing fireplace. Either way you get two stoves in one.

(Dealerships Available)

WOOD HEAT

Rt 212, Pleasant Valley, Quakertown, Pa
NEW HOURS Mon., Tues., Thurs.,
Fri. 12-8, Sat 8-5, Sun 1-5
Closed Wed Phone (215) 346-7894

FINANCING UP TO 36 MONTHS

FRESH COWS **EVERY WEDNESDAY IS** **SPRINGERS**

DAIRY DAY

AT NEW HOLLAND SALES STABLES, INC.
New Holland, PA

If you need 1 cow or a truck load, we have from 100 to 200 cows to sell every week at your price. Mostly fresh and close springing holsteins.

Cows from local farmers and our regular shippers include Marvin Eshleman, Glenn Fite, Kelly Bowser, Bill Lang, Blaine Hoffer, Dale Hostetter, H.D. Matz, and Jerry Miller.

SALE STARTS - 12:00 SHARP
Also Every Wednesday,
Hay, Straw & Ear Corn Sale - 12:00 Noon
All Dairy & Heifers must be eligible for Pennsylvania Health Charts.

For arrangements for special sales or herd dispersals at our barn or on your farm, contact
Abram Diffenbach, Mgr.
717-354-4341
OR
Norman Kolb
717-397-5538

HEIFERS **BULLS**

We Specialize In Aerial Work Using Our Twin Bucket Boom Truck

Extends To 55 Ft

ELECTRICAL CONTRACTING

Specializing In **AGRICULTURAL WIRING**

Also Residential, Industrial And Commercial Work
Free Estimates

C. M. HIGH CO.
320 King St.
Myerstown, PA 17067
Phone 717-866-7544

We Have Poles In Stock 25 30 35 & 45

TAKE YOUR CHOICE OF THESE 3,888 SQ. FT. BUILDINGS...

54'x72'x15' Clear Span

- Bare Aluminum Roof
- 1 24'x15' Gable End Sliding Door Split
- 1 18'x14' Side Wall Sliding Door
- 1 3'x6 8" Solid Entrance Door
- 4 36'x96" Skylights In Roof

Painted Aluminum Sides

SPECIAL \$15,300*

38' + 16' x 72' Off Peak

- Bare Aluminum Roof
- 1 18'x15' Gable End Sliding Door
- 1 18'x14' Side Wall Sliding Door
- 1 3'x6 8" Solid Entrance Door
- 4 36'x96" Skylights In Roof

Painted Aluminum Sides

SPECIAL \$13,300*

WINTER SPECIALS

RED ROSE BUILDING SYSTEMS

Ask About Winter Special Discounts On All our Other Buildings!

P.O. Box 366
Manheim, Pa. Call Collect 717-665-7150

★ DO-IT-YOURSELFERS ★
We Can Furnish You With A Complete Building Materials Package And Blueprints. Erect it yourself and Save Labor Costs!

Specializing In All Types Of Farm and Commercial Buildings!

Ready To Serve You Throughout Penna., Maryland, Delaware, And New Jersey!

If you need any type of farm or commercial building, call collect or send the coupon for more information.

* Prices & Specifications Could Vary Due To Local Building Codes

Please contact me with information on the following **LF FARM BUILDINGS** **COMMERCIAL BUILDINGS**

DO-IT-YOURSELF BUILDING PACKAGES

Fill Out And Mail To **Red Rose Building Systems,**
PO Box 366, Manheim, Pa. 17545

Name _____

Address or RD _____

Town _____ State _____ Zip _____

Phone (include area code) _____

Plain or Safety Steel Toe Hardworking Feet Deserve

THE HEEL FIT OF PECOS BOOTS

RED WING

Heel Fitted Counter

The Pecos 1155 is, by far, our best selling boot. No wonder! It's good looking, rugged and comes in a wide range of sizes. For the heel hugging fit of your life slip on a pair of Pecos boots. We've got your size!

SIZES									
AAA	AA	A	B	C	D	E	EE	EEE	
10-14	9-15	8-15	7-16	7-14	4-16	5-15	6-14	7-14	

WAYNE'S DRY GOODS

271 W. Main St. Kutztown, PA
Phone (215) 683-7686
Free Parking at Rear of Store