

What's the secret to Harvestore® system ration consistency?

First-in, first-out feeding.

First-in, first-out feeding. It doesn't matter how good your feed is if it changes from one load to the next. Even changes too small to notice can cause a drop in milk and meat production.

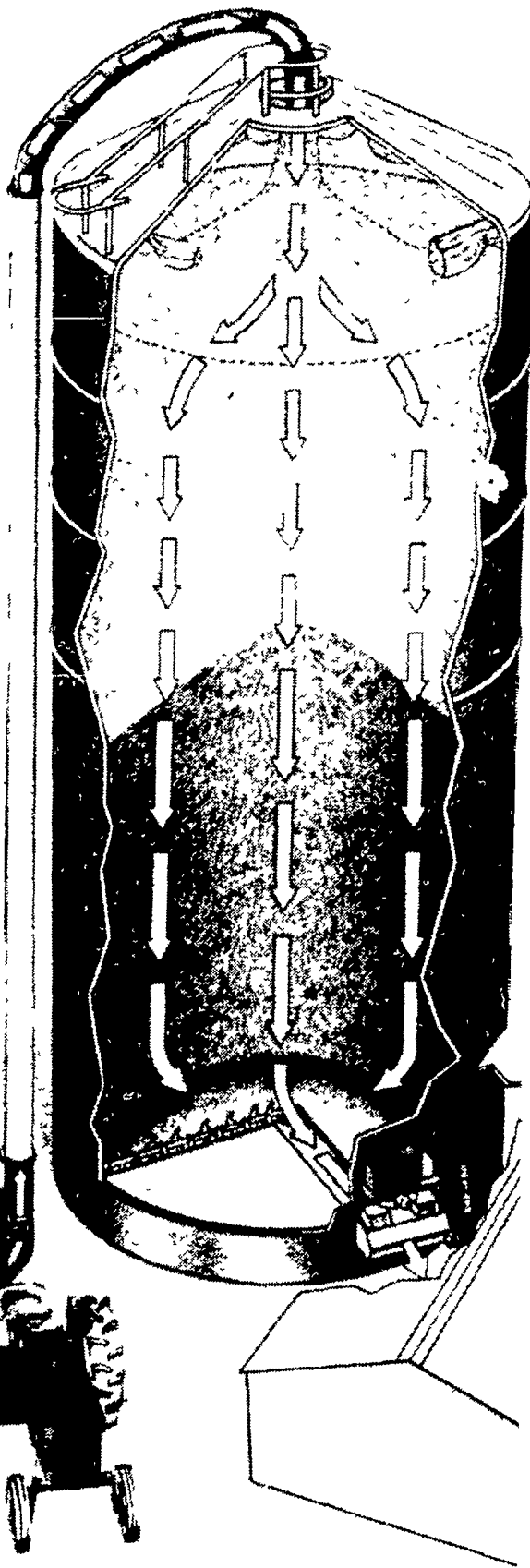
But when you feed the Harvestore® system way, what you feed today will be the same as what you feed next week.

What goes in first comes out first

Because Harvestore structures load at the top and unload from the bottom, the forage you put in first is what you feed first. You can refill your structure anytime without a feeding interruption. You can put one forage crop right on top of another, yet the change is gradual when you feed.

Never climb a silo chute again

Harvestore structures don't have them, you don't have the chore of climbing up dusty, chaffy tunnels to take out silo doors. You never have to hoist bulky, awkward unloaders to the top. And even in long, hard northern winters, you never have to haul an axe up 50, 60 or 80 feet in the numbing cold, and put it to work breaking up rock-hard, frozen silage.



Every Harvestore structure loads at the top and unloads from the bottom, it is a feed processing system rather than just somewhere to store feed. Even when changing from one layer to the next, change is gradual so there are no surprises to put your livestock off their rations.

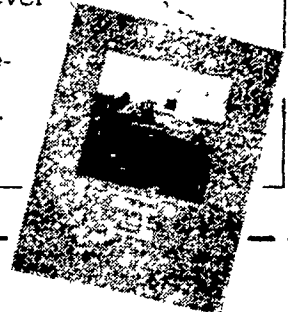
Easier on you and your pocket

The Harvestore system is truly a better way to farm and feed, a way that gives you time you never had before to get on with other, more important things. Feeding is reduced to a quick and easy routine that can save you money on hired labor, and the rich, consistent feed quality can make you more money in increased performance.

The best time to check out what the Harvestore system can do for you is right now. Have your dealer prepare a Farm Profit Plan for you and arrange for you to go along on a Harvestore system farm tour. Or fill out and mail the coupon below and discover just how much a Harvestore system can help you.

Nobody else has these unique Harvestore system features

- Single motor for simplicity and reliability
- Unloader can be moved easily from one structure of the same diameter to the next
- No dangerous, uncomfortable tunnel to crawl into
- Unlike some bottom unloaders, Harvestore system unloaders can be easily pulled and serviced at ground level
- 32 years of oxygen-limiting storage experience
- Coast-to-coast dealer and service network



NAME _____

ADDRESS _____

TOWN _____ COUNTY _____

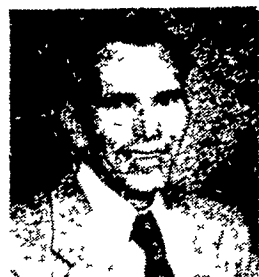
STATE _____ ZIP _____

PHONE (Area Code) _____

DAIRY # BEEF # HOGS

Penn-Jersey HARVESTORE Systems, Inc.
P.O. Box 7
New Holland, PA 17557

1/3



George Scott

JOIN US! NEW JERSEY DAIRY TOUR

TUESDAY, JANUARY 6, 1981, 10:30 AM

Meeting Place: Pole Tavern Diner, Routes 40 & 77, Elmer, New Jersey

SPONSORED BY GEORGE SCOTT,

PENN-JERSEY HARVESTORE REPRESENTATIVE

Telephone: 609-461-4544

VISIT TWO OUTSTANDING DAIRY FARMS!

Penn-Jersey HARVESTORE® Systems, Inc.

P.O. BOX 7

NEW HOLLAND, PA 17557

PH: 717-354-4051

THERE'S ONE BEST TIME.

NOW.

